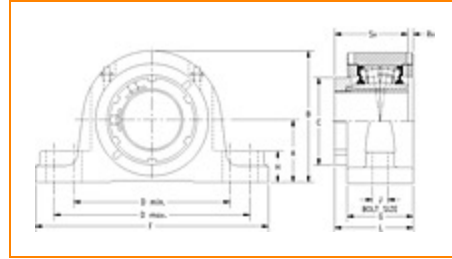
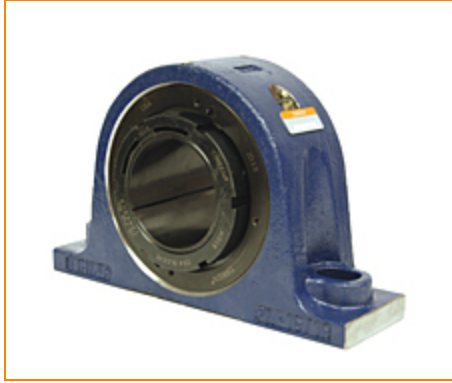



**The Timken Company**

4500 Mt Pleasant St. NW

N. Canton, OH 44720

**Phone:** (234) 262-3000

**E-Mail:** [CustomerCAD@timken.com](mailto:CustomerCAD@timken.com) • **Web site:** [www.timken.com](http://www.timken.com)
**Part Number QVSN14V060S, Single V-Lock Two-Bolt Pillow Block**


[Specifications](#) | [Dimensions](#) | [Radial and Thrust Factors](#) | [Engineering Seal Speed](#) | [Engineering Bearing Attributes](#) | [Engineering Internal Radial Clearance](#)

**Specifications**

**Engineering Group** Mounted Bearing

**Bearing Number** 22214

**Shaft Size** 60 mm

**Shaft Size Type** Metric

**Full Timken Part Number**

- QVSN14V060SB
- QVSN14V060SC
- QVSN14V060SEB
- QVSN14V060SEC
- QVSN14V060SEM
- QVSN14V060SEN
- QVSN14V060SEO
- QVSN14V060SET
- QVSN14V060SM
- QVSN14V060SN
- QVSN14V060SO
- QVSN14V060ST



<b>Locking Style</b>	Single V-Lock
<b>Housing Construction</b>	Two-Bolt Pillow Block
<b>UPC Code</b>	0883450177368 0883450177559 0883450177566 0883450177801 0883450177993 0883450178013 0883450204972 0883450205351 0883450217392 0883450217774 0883450229814 0883450230193

## Dimensions

<b>Dimension A</b>	3.15 in 80 mm
<b>Dimension B</b>	6.18 in 157 mm
<b>Dimension C</b>	3.7 in 94 mm
<b>Dimension D Min</b>	7.72 in 196 mm
<b>Dimension D Max</b>	9.25 in 235 mm
<b>Dimension F</b>	10.83 in 275 mm
<b>Dimension G</b>	2.91 in 74 mm
<b>Dimension H</b>	1.38 in 35 mm

<b>Dimension J (Bolt Size)</b>	0.625 in 16 mm
--------------------------------	-------------------

<b>Dimension L</b>	3.5 in 89 mm
--------------------	-----------------

<b>Dimension RV</b>	0.31 in 7.9 mm
---------------------	-------------------

<b>Dimension SV</b>	3.19 in 81 mm
---------------------	------------------

## Radial and Thrust Factors

<b>C0 - Static Load</b>	52000 lbf 231000 N
-------------------------	-----------------------

<b>C - Dynamic Load (Basic)</b>	47800 lbf 213000 N
---------------------------------	-----------------------

<b>e - Geometry Factor</b>	0.23
----------------------------	------

<b>Y1 - Geometry Factor</b>	2.90
-----------------------------	------

<b>Y2 - Geometry Factor</b>	4.32
-----------------------------	------

## Engineering Seal Speed

<b>Oil Lubrication - M/N Seal</b>	1700 rpm
-----------------------------------	----------

<b>Oil Lubrication - T Seal</b>	3050 rpm
---------------------------------	----------

<b>Oil Lubrication - B/C/O Seal</b>	1400 rpm
-------------------------------------	----------

<b>Grease Lubrication - M/N Seal</b>	1700 rpm
--------------------------------------	----------

<b>Grease Lubrication - T Seal</b>	2600 rpm
------------------------------------	----------

<b>Grease Lubrication - B/C/O Seal</b>	1400 rpm
--	----------

## Engineering Bearing Attributes

<b>Float</b>	0.083 in 2.108 mm
--------------	----------------------

<b>Shaft Tolerance</b>	0.0015 in 0.038 mm
------------------------	-----------------------

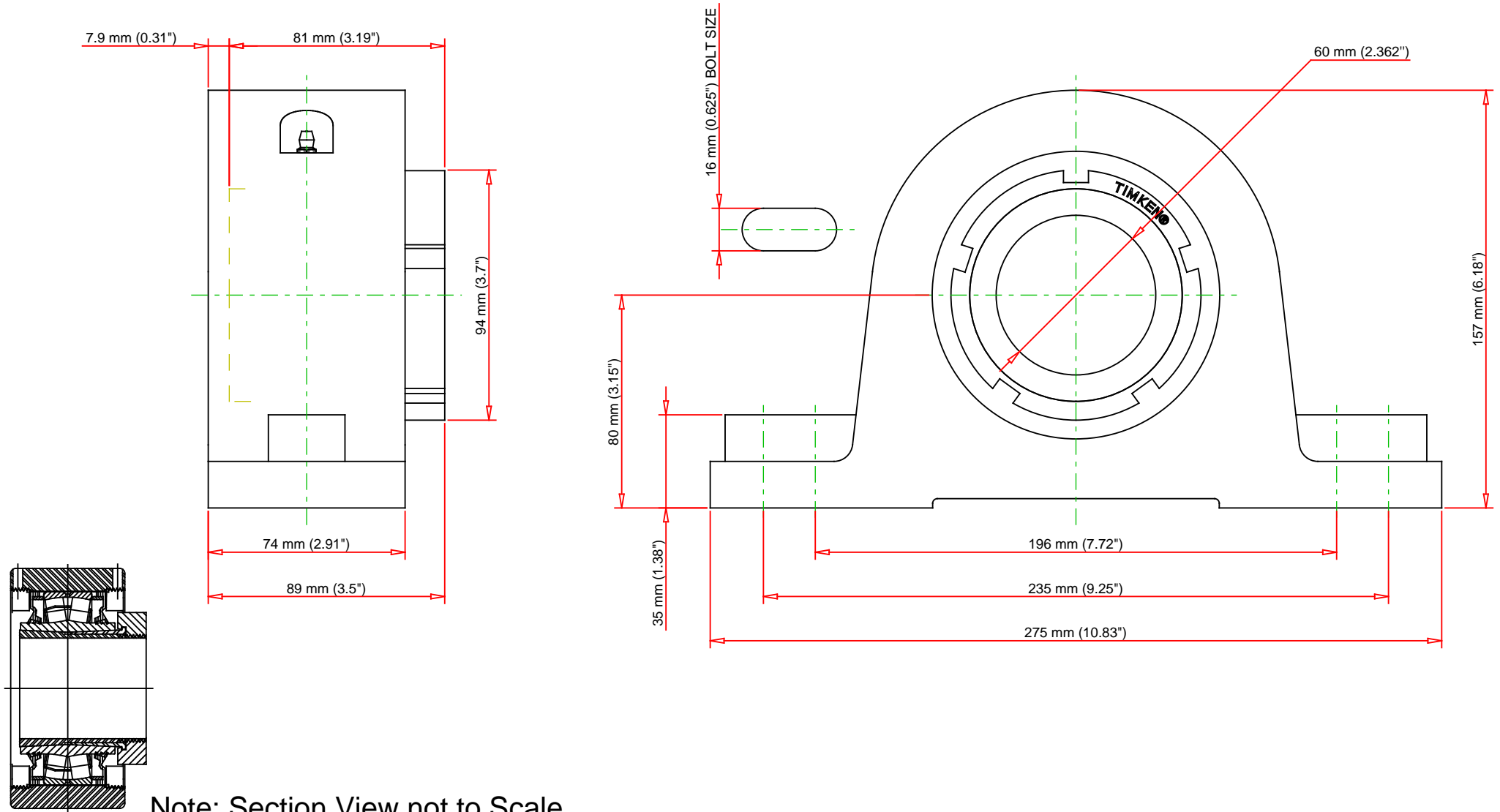
## Engineering Internal Radial Clearance

<b>Eng Internal Radial Clearance - Min</b>	0.0030
--	--------

<b>Eng Internal Radial Clearance - Max</b>	0.0037
--	--------

<b>Pre Install Clearance Min</b>	0.0030 in 0.075 mm
----------------------------------	-----------------------

<b>Pre Install Clearance Max</b>	0.0037 in 0.094 mm
----------------------------------	-----------------------



C - Dynamic Load	47800	lbf	213000	N
C0 - Static Load	52000	lbf	231000	N
Weight	37	lb	16.8	kg
Max. Speed T-Seals & Grease	2600	rpm		
Rad. Clearance - Max.	0.0037			

**TIMKEN**

THE TIMKEN COMPANY  
NORTH CANTON, OHIO USA

**QVSN14V060S**  
Single V-Lock Two-Bolt Pillow Block

Every reasonable effort has been made to ensure the accuracy of the information contained in this writing, but no liability is accepted for errors, omissions or for any other reason.

**FOR DISCUSSION ONLY**