



The Timken Company

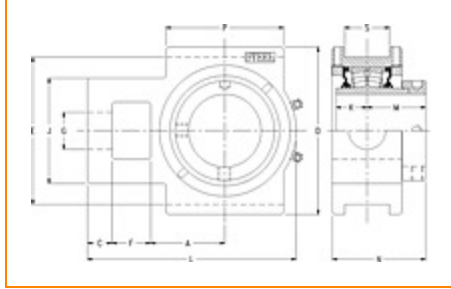
4500 Mt Pleasant St. NW

N. Canton, OH 44720

Phone: (234) 262-3000

E-Mail: CustomerCAD@timken.com • **Web site:** www.timken.com

Part Number QMTU18J307S, Eccentric Take-Up Block



[Specifications](#) | [Dimensions](#) | [Radial and Thrust Factors](#) | [Engineering Seal Speed](#) | [Engineering Bearing Attributes](#) | [Engineering Internal Radial Clearance](#)

Specifications -

Engineering Group	Mounted Bearing
Bearing Number	22218
Shaft Size	3 7/16 in
Shaft Size Type	Imperial
Full Timken Part Number	QMTU18J307SB QMTU18J307SC QMTU18J307SEB QMTU18J307SEC QMTU18J307SEM QMTU18J307SEN QMTU18J307SEO QMTU18J307SET QMTU18J307SM QMTU18J307SN QMTU18J307SO



QMTU18J307ST

Locking Style	Eccentric
Housing Construction	Take-Up
UPC Code	0883450103770
	0883450103787
	0883450103800
	0883450103817
	0883450103824
	0883450103831
	0883450103848
	0883450103855
	0883450169363
	0883450169745
0883450260763	
0883450261081	

Dimensions

Dimension A1	3.63 in 92.2 mm
Dimension C	1 in 25.4 mm
Dimension D	7.63 in 193.8 mm
Dimension E	6.81 in 173 mm
Dimension F	1.81 in 46 mm
Dimension G	1.88 in 47.8 mm
Dimension J	4.88 in 124 mm
Dimension L	10.12 in 257 mm

Dimension K	1.44 in 36.6 mm
Dimension M	2.59 in 65.8 mm
Dimension N	4.19 in 106.4 mm
Dimension P	6.25 in 158.8 mm
Dimension S	1.81 in 46 mm

Radial and Thrust Factors

C0 - Static Load	87200 lbf 388000 N
C - Dynamic Load (Basic)	79700 lbf 355000 N
e - Geometry Factor	0.23
Y1 - Geometry Factor	2.90
Y2 - Geometry Factor	4.31

Engineering Seal Speed

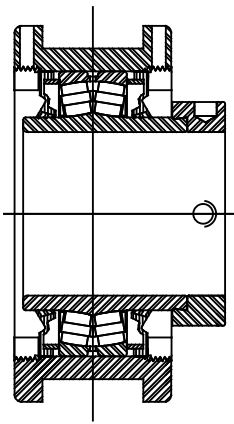
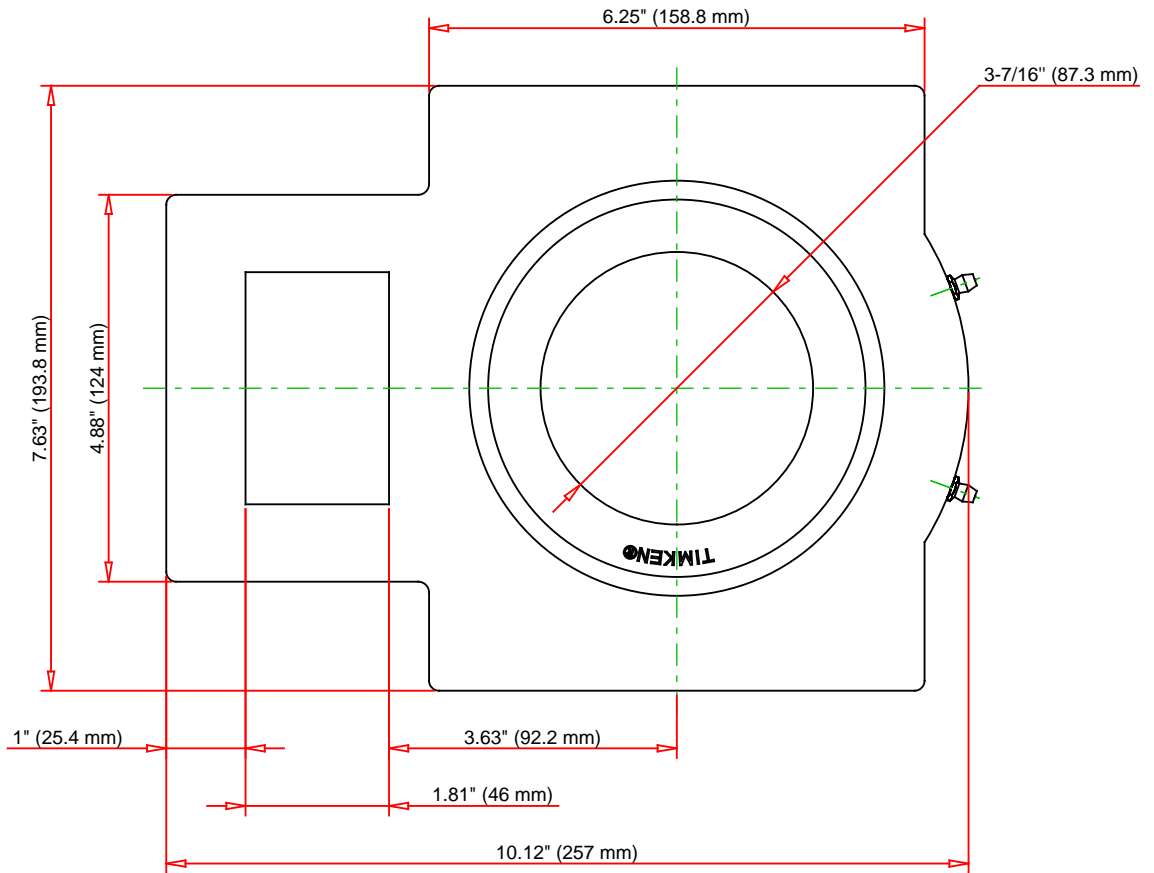
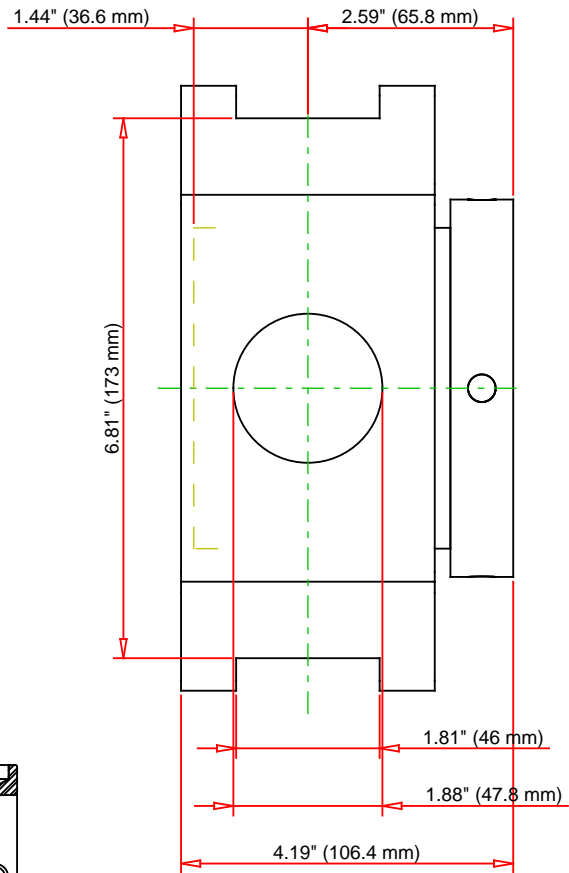
Oil Lubrication - M/N Seal	1400 rpm
Oil Lubrication - T Seal	2400 rpm
Oil Lubrication - B/C/O Seal	1000 rpm
Grease Lubrication - M/N Seal	1400 rpm
Grease Lubrication - T Seal	2000 rpm
Grease Lubrication - B/C/O Seal	1000 rpm

Engineering Bearing Attributes

Float	0.08 in 2.03 mm
Shaft Tolerance	0.0030 in 0.076 mm

Engineering Internal Radial Clearance

Eng Internal Radial Clearance - Min	0.0024
Eng Internal Radial Clearance - Max	0.0039
Pre Install Clearance Min	0.0024 in 0.060 mm
Pre Install Clearance Max	0.0039 in 0.100 mm



Note: Section View not to Scale

C - Dynamic Load	79700	lbf	355000	N
C0 - Static Load	87200	lbf	388000	N
Weight	44	lb	20	kg
Max. Speed T-Seals & Grease	2000	rpm		
Rad. Clearance - Max.	0.0039			

TIMKEN

THE TIMKEN COMPANY
NORTH CANTON, OHIO USA

QMTU18J307S
Eccentric Take-Up Block

Every reasonable effort has been made to ensure the accuracy of the information contained in this writing, but no liability is accepted for errors, omissions or for any other reason.

FOR DISCUSSION ONLY