


The Timken Company

4500 Mt Pleasant St. NW

N. Canton, OH 44720

Phone: (234) 262-3000

E-Mail: CustomerCAD@timken.com • **Web site:** www.timken.com

Part Number QMMC18J085S, Eccentric Cartridge Block



[Specifications](#) | [Dimensions](#) | [Radial and Thrust Factors](#) | [Engineering Seal Speed](#) | [Engineering Bearing Attributes](#) | [Engineering Internal Radial Clearance](#)

Specifications

Engineering Group	Mounted Bearing
Bearing Number	22218
Shaft Size	85 mm
Shaft Size Type	Metric
Full Timken Part Number	QMMC18J085SB QMMC18J085SC QMMC18J085SEB QMMC18J085SEC QMMC18J085SEM QMMC18J085SEN QMMC18J085SEO QMMC18J085SET QMMC18J085SM QMMC18J085SN QMMC18J085SO QMMC18J085ST



Locking Style	Eccentric
Housing Construction	Cartridge
UPC Code	883450167994 883450168267 883450168328 883450168380 883450168441 883450168670 883450168946 883450169004 883450169066 883450169127 883450259798 883450260275

Dimensions

Dimension A	0.59 in 15 mm
Dimension B	1.06 in 26.9 mm
Dimension C	4.76 in 120.9 mm
Dimension D	0.23 in 5.8 mm
Dimension F	6.7500 in 171.5 mm
Dimension G	3.45 in 87.6 mm
Dimension K	1.44 in 36.6 mm
Dimension L Exp	4.4 in 111.8 mm

Dimension L Fix	4.32 in 109.7 mm
------------------------	---------------------

Dimension M	2.56 in 65 mm
--------------------	------------------

Dimension R	0.29 in 7.4 mm
--------------------	-------------------

Dimension S	4.03 in 102.4 mm
--------------------	---------------------

Radial and Thrust Factors

C0 - Static Load	87200 lbf 388000 N
-------------------------	-----------------------

C - Dynamic Load (Basic)	79700 lbf 355000 N
---------------------------------	-----------------------

e - Geometry Factor	0.23
----------------------------	------

Y1 - Geometry Factor	2.90
-----------------------------	------

Y2 - Geometry Factor	4.31
-----------------------------	------

Engineering Seal Speed

Oil Lubrication - M/N Seal	1400 rpm
-----------------------------------	----------

Oil Lubrication - T Seal	2400 rpm
---------------------------------	----------

Oil Lubrication - B/C/O Seal	1000 rpm
-------------------------------------	----------

Grease Lubrication - M/N Seal	1400 rpm
--------------------------------------	----------

Grease Lubrication - T Seal	2000 rpm
------------------------------------	----------

Grease Lubrication - B/C/O Seal	1000 rpm
--	----------

Engineering Bearing Attributes

Float	0.083 in 2.108 mm
--------------	----------------------

Shaft Tolerance	0.0030 in 0.076 mm
------------------------	-----------------------

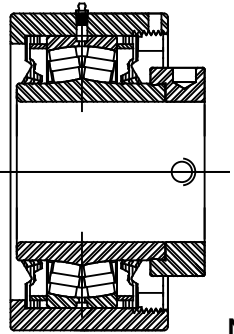
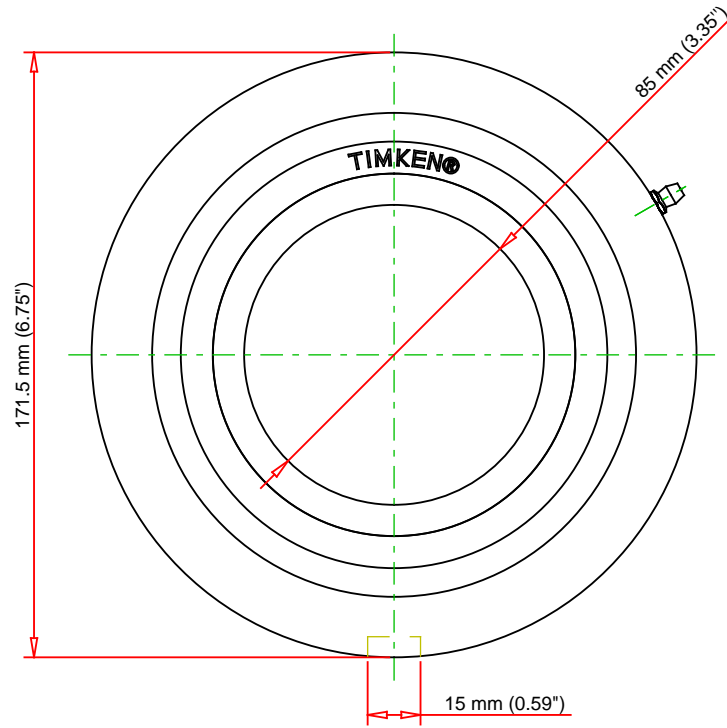
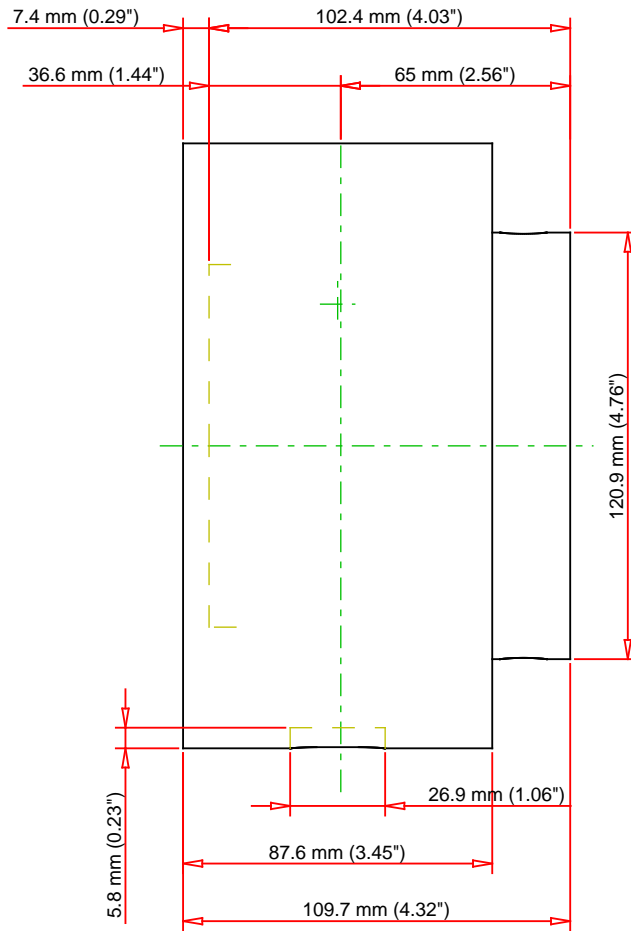
Engineering Internal Radial Clearance

Eng Internal Radial Clearance - Min	0.0024
--	--------

Eng Internal Radial Clearance - Max	0.0039
--	--------

Pre Install Clearance Min	0.0024 in 0.060 mm
----------------------------------	-----------------------

Pre Install Clearance Max	0.0039 in 0.100 mm
----------------------------------	-----------------------



Note: Section View not to Scale

C - Dynamic Load	79700	lbf	355000	N
C0 - Static Load	87200	lbf	388000	N
Weight	26	lb	11.8	kg
Max. Speed T-Seals & Grease	2000	rpm		
Rad. Clearance - Max.	0.0039			

TIMKEN

THE TIMKEN COMPANY
NORTH CANTON, OHIO USA

QMMC18J085S
Eccentric Cartridge Block

Every reasonable effort has been made to ensure the accuracy of the information contained in this writing, but no liability is accepted for errors, omissions or for any other reason.

FOR DISCUSSION ONLY