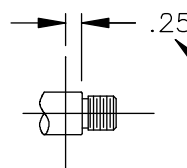
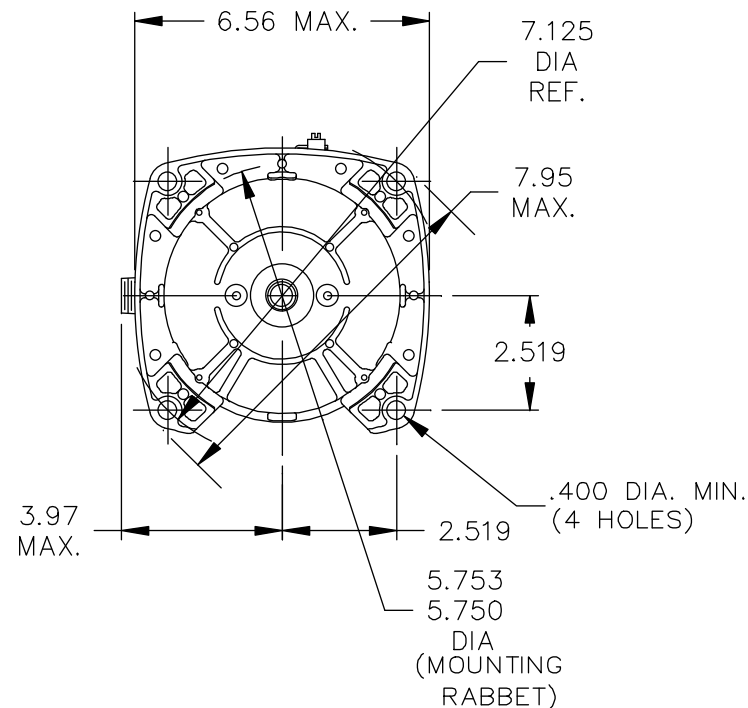
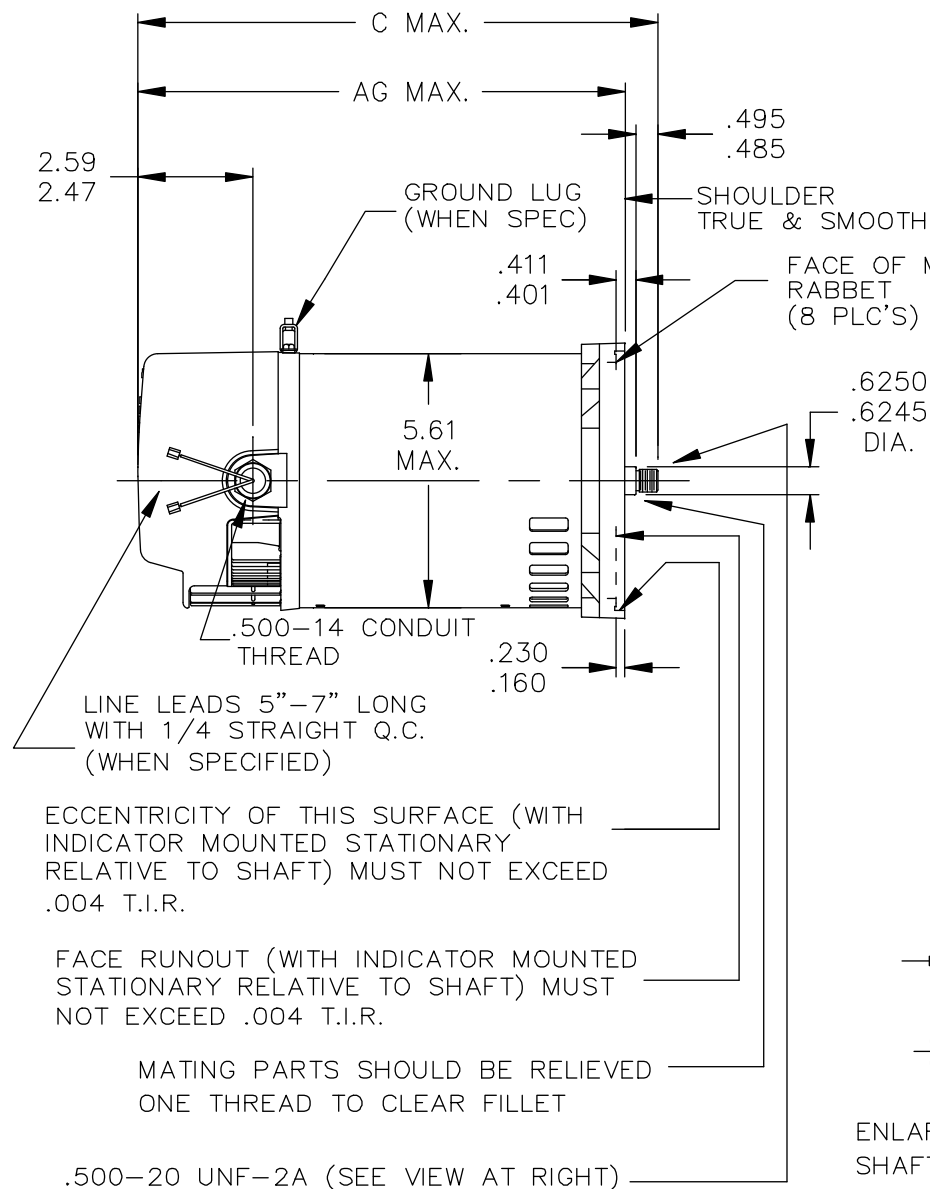


52A107191



ENLARGED VIEW  
SHAFT EXTENSION

ECCENTRICITY OF SHAFT  
AT THIS POINT NOT TO  
EXCEED .002 T.I.R.

2	KC	38	56Z	12.59	11.86	7.22
1	KC	36	56Z	11.59	10.86	6.22
P	TYPE	RBC SIZE	NEMA FR	C	AG	SHELL REF.

NO.	REVISION	BY & DATE	CHK	ANG	TOLERANCES UNLESS SPECIFIED		FINISH	SIZE	DRAWING NO.	REV.
					DEC.	INCHES				
6	JET/POOL IS REPLACED BY JET PUMP PER ECO-0033464	PVR 05/15/13	DS	DEC.		INCHES				
5	ADDED DIM 7.95 MAX. PER ISO6-1166.	SUD 08/03/06		.X		±.1				
4	CHG TO RBC FORMAT PER ISO5-1777	SUD 02/22/06		.XX		±.03				
3	REVISED PER TI95-21,753.	MDP 04/27/95		.XXX		±.005				
2	REV. PER (TI94-21348 & 348A)	MAM 09/28/94		.XXXX		±.0005				
						±1/2'				
THIS DRAWING IN DESIGN AND DETAIL IS OUR PROPERTY AND MUST NOT BE USED EXCEPT IN CONNECTION WITH OUR WORK ALL RIGHTS OF DESIGN AND INVENTION ARE RESERVED THIS IS AN ELECTRONICALLY GENERATED DOCUMENT - DO NOT SCALE THIS PRINT								RFP	CAD FILE	52A107191
								DIST		
								SIZE	DRAWING NO.	REV.
								A	52A107191	6



REGAL-BELOIT CORPORATION

TITLE OUTLINE  
2 COMPARTMENT UPGRADE - 56Z - JET PUMP

MAT'L.

DRAWN BJS 09/09/91

CHK

APPD BLJ 09/09/91

SCALE 3=8

REF

FMF

PREV