

**BALDOR • RELIANCE**

---

# Customer information packet

## 35X315R445G1

1.5HP, 3500RPM, 3PH, 60HZ, 56CZ, 3528M, TENV, F

Class - None

Division - Not Applicable

## Specifications

Enclosure	TENV
Frame	56CZ
Frame Material	Stainless Steel
Frequency	60.00 Hz
Haz Area Class and Group	None
Haz Area Division	Not Applicable
Motor Letter Type	Three Phase
Output @ Frequency	1.500 HP @ 60 HZ
Phase	3
Synchronous Speed @ Frequency	3600 RPM @ 60 HZ
Voltage @ Frequency	230.0 V @ 60 HZ 460.0 V @ 60 HZ
Agency Approvals	UR CSA
Ambient Temperature	40 °C
Auxillary Box	No Auxillary Box
Auxillary Box Lead Termination	None
Base Indicator	Rigid
Bearing Grease Type	Polyrex EM (-20F +300F)
Blower	None
Current @ Voltage	2.000 A @ 460.0 V 4.000 A @ 230.0 V
Design Code	B
Drip Cover	No Drip Cover
Duty Rating	CONT
Efficiency @ 100% Load	85.5 %
Electrically Isolated Bearing	Not Electrically Isolated
Feedback Device	NO FEEDBACK
Front Face Code	Standard
Front Shaft Indicator	None
Heater Indicator	No Heater
High Voltage Full Load Amps	2.0 a

## Part detail

Revision	P
Type	AC
Mech. spec.	35X315
Base	
Status	PRD/A
Elec. spec.	35WGR445
Layout	35LYX315
Eff. date	02-19-2024
CD Diagram	CD0005
Poles	02
Leads	9#18
Proprietary	False
Created date	11-30-2009

<b>Insulation Class</b>	F
<b>Inverter Code</b>	Not Inverter
<b>KVA Code</b>	N
<b>Lifting Lugs</b>	No Lifting Lugs
<b>Locked Bearing Indicator</b>	Locked Bearing
<b>Motor Lead Exit</b>	Ko Box
<b>Motor Lead Quantity/Wire Size</b>	9 @ 18 AWG
<b>Motor Lead Termination</b>	Flying Leads
<b>Motor Standards</b>	NEMA
<b>Motor Type</b>	3528M
<b>Mounting Arrangement</b>	F1
<b>Number of Poles</b>	2
<b>Overall Length</b>	16.73 IN
<b>Power Factor</b>	87
<b>Product Family</b>	Wash Down All Stainless Steel
<b>Pulley End Bearing Type</b>	Sealed Bearing
<b>Pulley Face Code</b>	C-Face
<b>Pulley Shaft Indicator</b>	Standard
<b>Rodent Screen</b>	None
<b>Service Factor</b>	1.15
<b>Shaft Diameter</b>	0.625 IN
<b>Shaft Extension Location</b>	Pulley End
<b>Shaft Ground Indicator</b>	No Shaft Grounding
<b>Shaft Rotation</b>	Reversible
<b>Shaft Slinger Indicator</b>	No Slinger
<b>Speed</b>	3500 rpm
<b>Speed Code</b>	Single Speed
<b>Starting Method</b>	Direct on line
<b>Thermal Device - Bearing</b>	None
<b>Thermal Device - Winding</b>	None
<b>Vibration Sensor Indicator</b>	No Vibration Sensor
<b>Winding Thermal 1</b>	None
<b>Winding Thermal 2</b>	None

**Nameplate****NP1951A01**

<b>CAT.NO.</b>							
<b>SPEC.</b>	35X315R445G1						
<b>HP</b>	1.5						
<b>VOLTS</b>	230/460						
<b>AMP</b>	4/2						
<b>RPM</b>	3500						
<b>FRAME</b>	56CZ	<b>HZ</b>	60	<b>PH</b>	3		
<b>SER.F.</b>	1.15	<b>CODE</b>	N	<b>DES</b>	B	<b>CLASS</b>	F
<b>NEMA-NOM-EFF</b>	85.5	<b>PF</b>	87				
<b>RATING</b>	40C AMB-CONT						
<b>CC</b>	010A						
<b>DE</b>	6205	<b>ODE</b>	6203				
<b>ENCL</b>	TENV	<b>SN</b>					

**AC Induction Motor Performance Data**

Record # 20326

Typical performance - not guaranteed values

Winding: 35WGR445-R003		Type: 3528M	Enclosure: TENV
<b>Nameplate Data</b>		<b>460 V, 60 Hz: High Voltage Connection</b>	
Rated Output (HP)	1.5	Full Load Torque	2.3 LB-FT
Volts	230/460	Start Configuration	direct on line
Full Load Amps	4/2	Breakdown Torque	12 LB-FT
R.P.M.	3500	Pull-up Torque	8.2 LB-FT
Hz	60 Phase	Locked-rotor Torque	11 LB-FT
NEMA Design Code	B KVA Code	Starting Current	23.5 A
Service Factor (S.F.)	1.15	No-load Current	0.9 A
NEMA Nom. Eff.	85.5 Power Factor	Line-line Res. @ 25°C	6.95 Ω
Rating - Duty	40C AMB-CONT	Temp. Rise @ Rated Load	73°C

**Load Characteristics 460 V, 60 Hz, 1.5 HP**

% of Rated Load	25	50	75	100	125	150
Power Factor	51	71	81	87	90	91
Efficiency	73.8	82.5	85.2	86.1	86	85.4
Speed	3568	3544	3519	3493	3466	3434
Line amperes	1.1	1.3	1.6	1.9	2.3	2.8

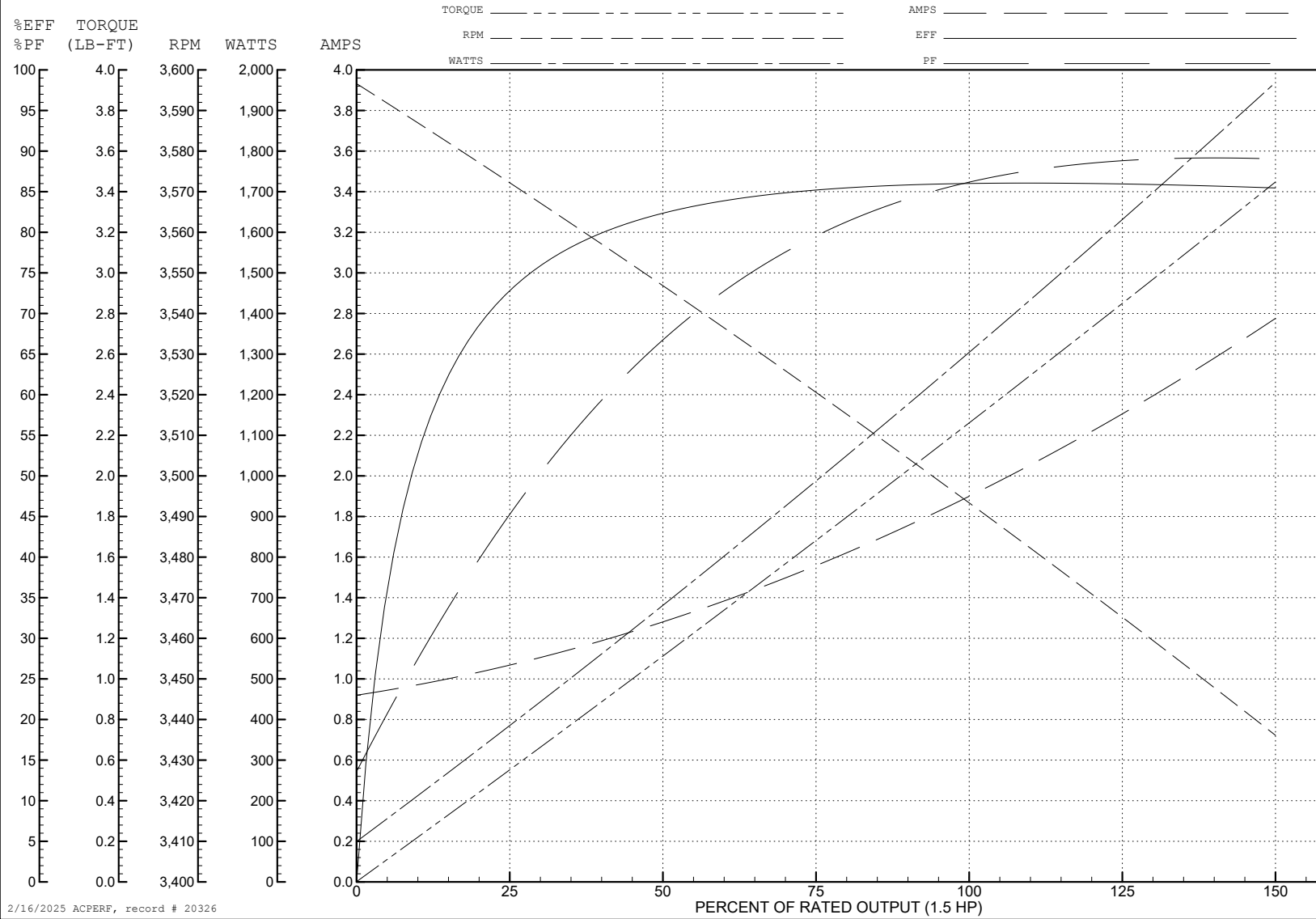
ABB Motors and Mechanical Inc.

WINDING # 35WGR445

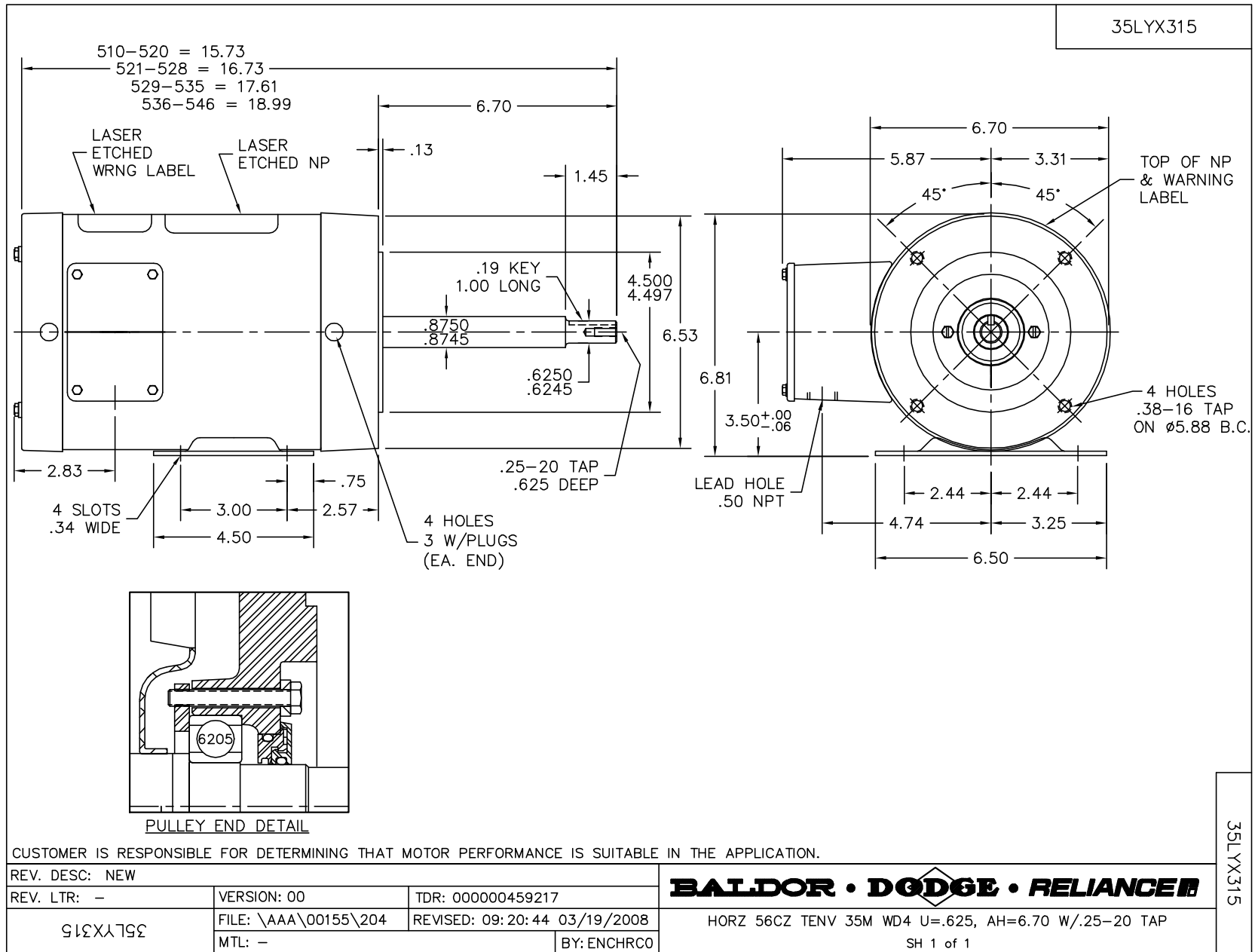
Typical performance - not guaranteed values.

1.5 HP 3 PH 60 HZ 3500 RPM 460 V 3528M

TORQUES (LB-FT): PO=12 PU=8.2 LR=11 LRA=23.5



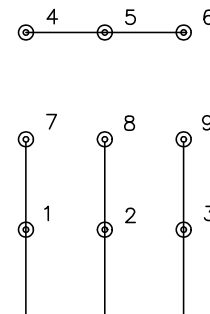
2/16/2025 ACPERF, record # 20326



CD0005

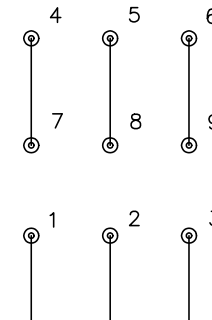


LOW VOLTAGE  
(2Y)



LINE

HIGH VOLTAGE  
(1Y)



LINE

NOTES:

1. INTERCHANGE ANY TWO LINE LEADS TO REVERSE ROTATION.
2. OPTIONAL THERMOSTATS ARE PROVIDED WHEN SPECIFIED.
3. ACTUAL NUMBER OF INTERNAL PARALLEL CIRCUITS MAY BE A MULTIPLE OF THOSE SHOWN ABOVE.
4. LEAD COLORS ARE OPTIONAL. LEADS MUST ALWAYS BE NUMBERED AS SHOWN.

CD0005

REV. DESC: REVISE TO SHOW OPTIONAL COLORS			
REV. LTR: E	BY: JLP	REVISED: 01/19/99 10:15	TDR: 0171435
S00000		FILE: AAA00005140	MDL: -
		MTL: -	

**BALDOR ELECTRIC Co.**

3PH, DV, 9 LEADS