

**BALDOR • RELIANCE**

---

# Customer information packet

## XM18542T

5HP, RPM, 3PH, 60HZ, 184T, XPFC, F1

Class - CLI GP D; CLII GP F,G

Division - Division I

## Specifications

Enclosure	XPFC
Frame	184T
Frame Material	Steel
Frequency	50.00 Hz 60.00 Hz
Haz Area Class and Group	CLI GP D; CLII GP F,G
Haz Area Division	Division I
Motor Letter Type	Three Phase
Output @ Frequency	5.000 HP @ 60 HZ 3.000 HP @ 50 HZ
Phase	3
Synchronous Speed @ Frequency	1800 RPM @ 60 HZ
Voltage @ Frequency	460.0 V @ 60 HZ 190.0 V @ 50 HZ 230.0 V @ 60 HZ 380.0 V @ 50 HZ
Agency Approvals	UL CSA EEV
Ambient Temperature	40 °C
Auxillary Box	No Auxillary Box
Auxillary Box Lead Termination	None
Base Indicator	Rigid
Bearing Grease Type	Polyrex EM (-20F +300F)
Blower	None
Constant Torque Speed Range	30
Current @ Voltage	11.200 A @ 190.0 V 13.600 A @ 230.0 V 5.600 A @ 380.0 V 6.800 A @ 460.0 V
Design Code	A
Drip Cover	No Drip Cover
Duty Rating	CONT

## Part detail

Revision	C
Type	AC
Mech. spec.	
Base	
Status	PRD/A
Elec. spec.	36WGR866
Layout	36LYR726
Eff. date	06-01-2023
CD Diagram	CD0005
Poles	04
Leads	9#16
Proprietary	False
Created date	09-29-2020

Efficiency @ 100% Load	89.5 %
Electrically Isolated Bearing	Not Electrically Isolated
Feedback Device	NO FEEDBACK
Haz Area Temp Code	T3C
Heater Indicator	No Heater
High Voltage Full Load Amps	5.6 a
Insulation Class	F
Inverter Code	Inverter Duty
IP Rating	NONE
KVA Code	L
Lifting Lugs	No Lifting Lugs
Locked Bearing Indicator	No Locked Bearing
Max Speed	2700 rpm
Motor Lead Termination	Flying Leads
Motor Standards	NEMA
Motor Type	3646M
Mounting Arrangement	F1
Number of Poles	4
Overall Length	19.74 IN
Power Factor	74
Product Family	General Purpose
Pulley Face Code	Standard
Rodent Screen	None
RoHS Status	ROHS NON-COMPLIANT
Service Factor	1.00
Shaft Diameter	1.125 IN
Shaft Ground Indicator	No Shaft Grounding
Shaft Rotation	Reversible
Speed	1750 rpm
Speed Code	Single Speed
Starting Method	Direct on line
Thermal Device - Bearing	None
Thermal Device - Winding	Normally Closed Thermostat
Vibration Sensor Indicator	No Vibration Sensor

Winding Thermal 1	None
Winding Thermal 2	None

---

**Nameplate**

NP0887XPSLEV										
<b>NO.</b>		<b>CC</b>	010A							
<b>S/N</b>		<b>TEMP CODE</b>	T3C							
<b>SPEC.</b>	36-0000-0424		<b>INV.TYPE</b>	PWM						
<b>CAT.NO.</b>	XM18542T		<b>C HP FR</b>	60	<b>C HP TO</b>	90				
<b>HP</b>	5//3		<b>CT HZ FROM</b>	30	<b>CT HZ TO</b>	60				
<b>VOLTS</b>	230/460//190/380		<b>VT HZ FROM</b>	6	<b>VT HZ TO</b>	60				
<b>AMPS</b>	13.6/6.8//11.2/5.6		<b>MAG CUR</b>	7.4/3.7						
<b>RPM</b>	1750//1460		<b>MX RPM</b>	2700						
<b>HZ</b>	60//50	<b>PH</b>	3	<b>CL</b>	F	<b>NOM.EFF.</b>	89.5			
<b>SER.F.</b>	1.00	<b>DES</b>	A	<b>SL HZ</b>	1.4	<b>WK2</b>	0.428			
<b>FRAME</b>	184T	<b>RATING</b>	40C AMB-CONT							
	55C AMB AT 1.00 SF SINEWAVE									
	NEMA MG-1 PART 5, IP54		1.15 SF SINEWAVE							

**AC Induction Motor Performance Data**

Record # 78059

Typical performance - not guaranteed values

<b>Winding: 36WGR866-R001</b>		<b>Type: 3646M</b>		<b>Enclosure: XPFC</b>		
<b>Nameplate Data</b>			<b>460 V, 60 Hz: High Voltage Connection</b>			
<b>Rated Output (HP)</b>	5//3		<b>Full Load Torque</b>	14.92 LB-FT		
<b>Volts</b>	230/460//190/380		<b>Start Configuration</b>	direct on line		
<b>Full Load Amps</b>	13.6/6.8//11.2/5.6		<b>Breakdown Torque</b>	68.7 LB-FT		
<b>R.P.M.</b>	1750//1460		<b>Pull-up Torque</b>	35.1 LB-FT		
<b>Hz</b>	60//50	<b>Phase</b>	3	<b>Locked-rotor Torque</b>	42.8 LB-FT	
<b>NEMA Design Code</b>	A		<b>KVA Code</b>	L	<b>Starting Current</b>	59.1 A
<b>Service Factor (S.F.)</b>	1			<b>No-load Current</b>	3.71 A	
<b>NEMA Nom. Eff.</b>	89.5	<b>Power Factor</b>	74	<b>Line-line Res. @ 25°C</b>	1.91 Ω	
<b>Rating - Duty</b>	40C AMB-CONT			<b>Temp. Rise @ Rated Load</b>	58°C	
				<b>Locked-rotor Power Factor</b>	39.7	
				<b>Rotor inertia</b>	0.428 LB-FT <sup>2</sup>	

**Load Characteristics 460 V, 60 Hz, 5 HP**

<b>% of Rated Load</b>	<b>25</b>	<b>50</b>	<b>75</b>	<b>100</b>	<b>125</b>	<b>150</b>
<b>Power Factor</b>	36	57	69	76	81	83
<b>Efficiency</b>	80.6	87.7	89.6	89.8	89.5	88.7
<b>Speed</b>	1789	1780	1770	1760	1749	1737
<b>Line amperes</b>	4.01	4.72	5.7	6.83	8.1	9.53

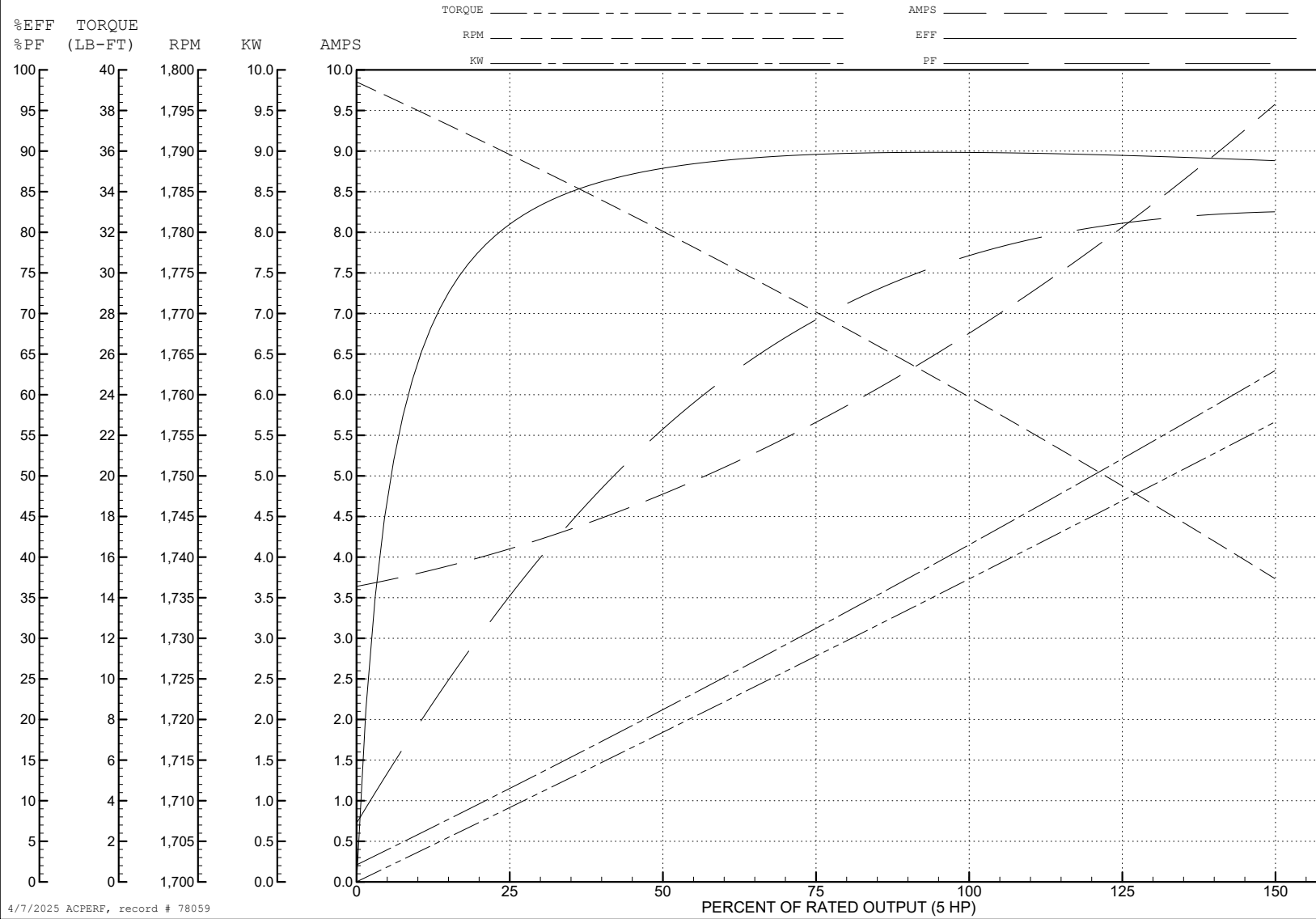
ABB Motors and Mechanical Inc.

WINDING # 36WGR866

Typical performance - not guaranteed values.

5 HP 3 PH 60 HZ 1760 RPM 460 V 3646M

TORQUES (LB-FT): PO=68.7 PU=35.1 LR=42.8 LRA=59.1



4/7/2025 ACPERF, record # 78059

**AC Induction Motor Performance Data**

Record # 78060

Typical performance - not guaranteed values

Winding: 36WGR866-R001		Type: 3646M	Enclosure: XPFC			
<b>Nameplate Data</b>			<b>380 V, 50 Hz: High Voltage Connection</b>			
Rated Output (HP)	5//3		Full Load Torque	10.7 LB-FT		
Volts	230/460//190/380		Start Configuration	direct on line		
Full Load Amps	13.6/6.8//11.2/5.6		Breakdown Torque	65.1 LB-FT		
R.P.M.	1750//1460		Pull-up Torque	35.75 LB-FT		
Hz	60//50	Phase	3	Locked-rotor Torque	43.59 LB-FT	
NEMA Design Code	A		KVA Code	L	Starting Current	57.03 A
Service Factor (S.F.)	1				No-load Current	3.63 A
NEMA Nom. Eff.	89.5	Power Factor	74		Line-line Res. @ 25°C	1.91 Ω
Rating - Duty	40C		AMB-CONT		Temp. Rise @ Rated Load	42°C
					Locked-rotor Power Factor	44
					Rotor inertia	0.428 LB-FT <sup>2</sup>

**Load Characteristics 380 V, 50 Hz, 3 HP**

% of Rated Load	25	50	75	100	125	150
Power Factor	29	47	60	68	75	78
Efficiency	75.9	84.9	87.8	88.7	88.8	88.4
Speed	1492	1485	1477	1470	1461	1453
Line amperes	3.82	4.27	4.89	5.6	6.42	7.34

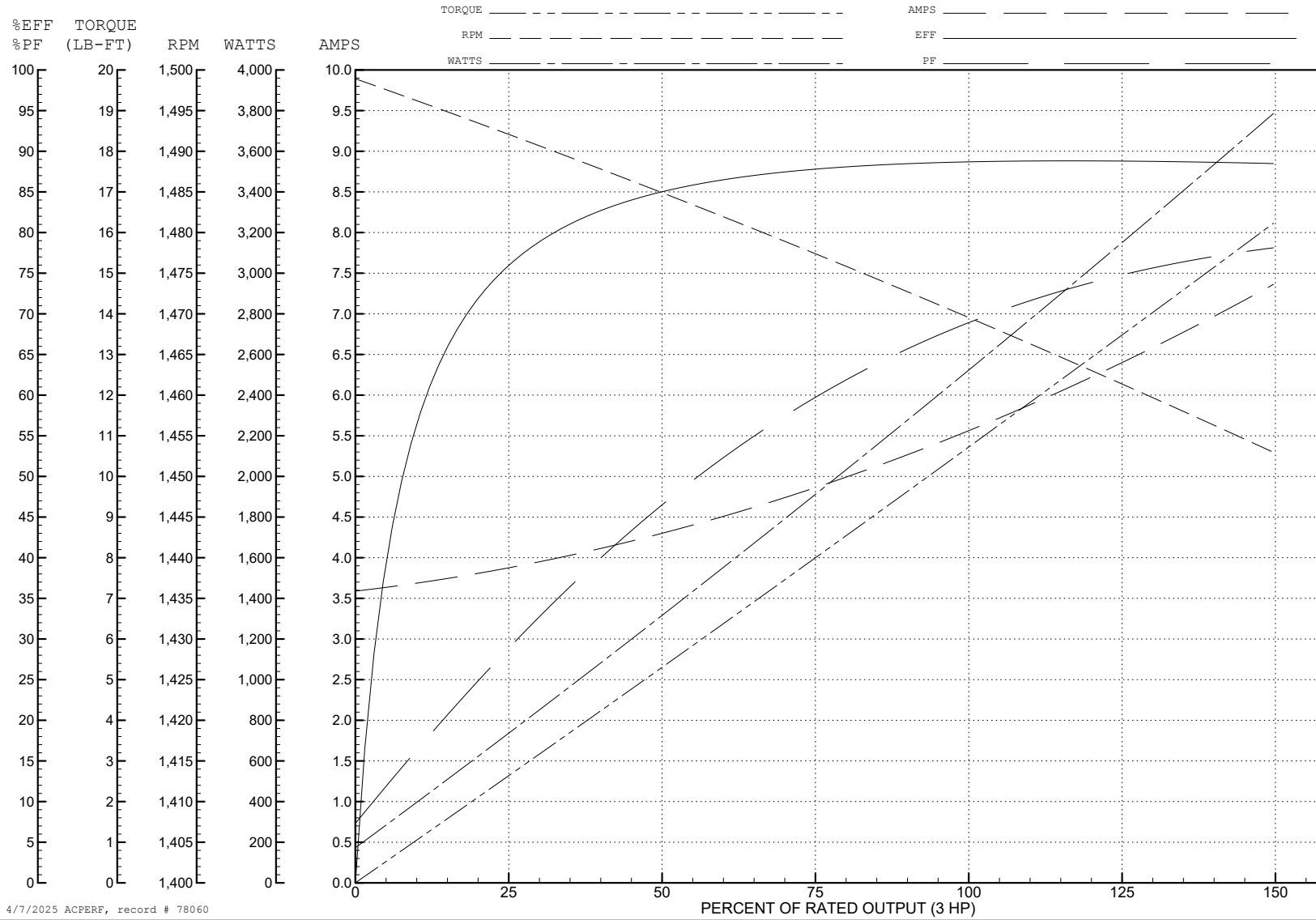
ABB Motors and Mechanical Inc.

WINDING # 36WGR866

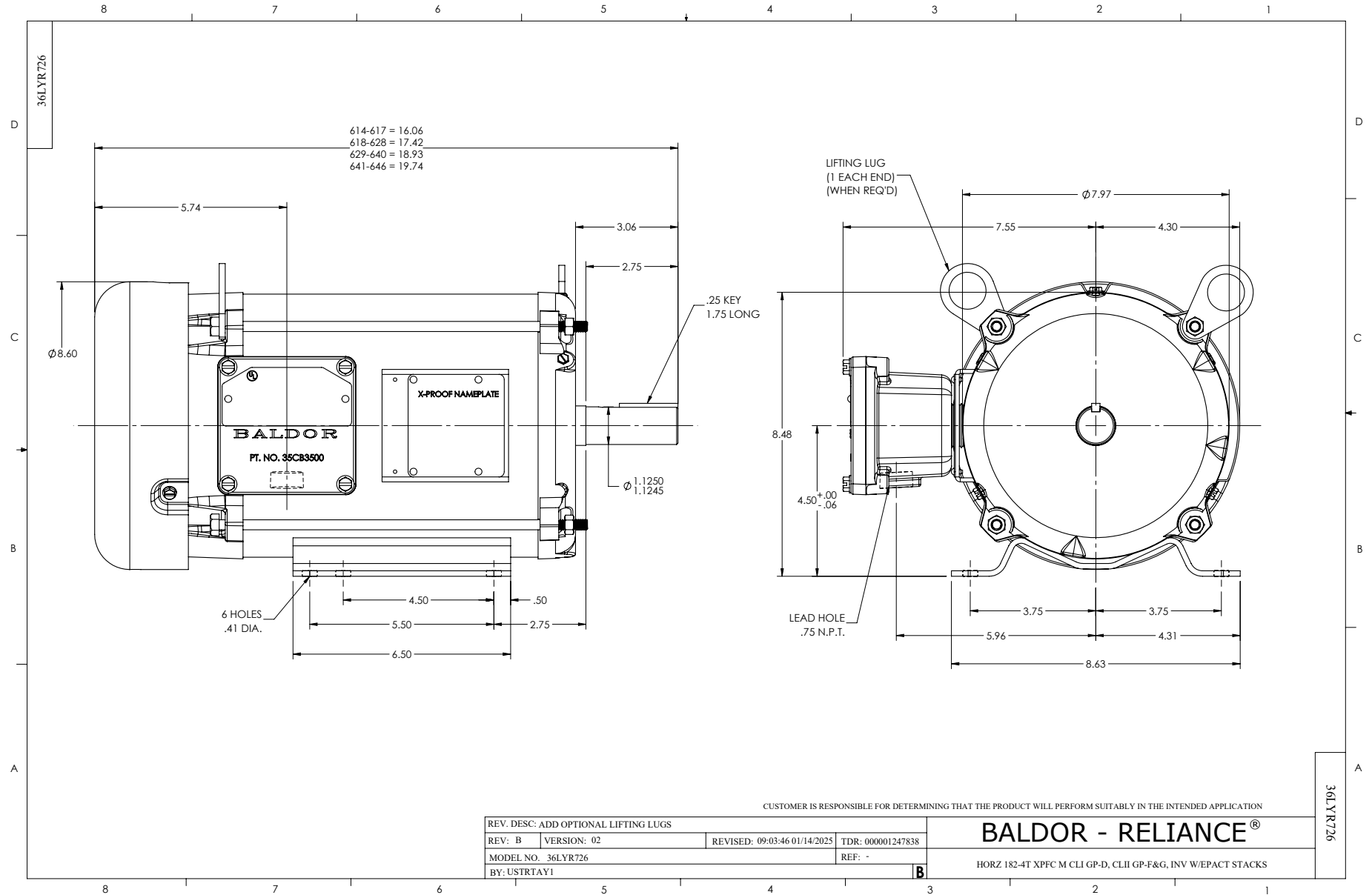
3 HP 3 PH 50 HZ 1470 RPM 380 V 3646M

Typical performance - not guaranteed values.

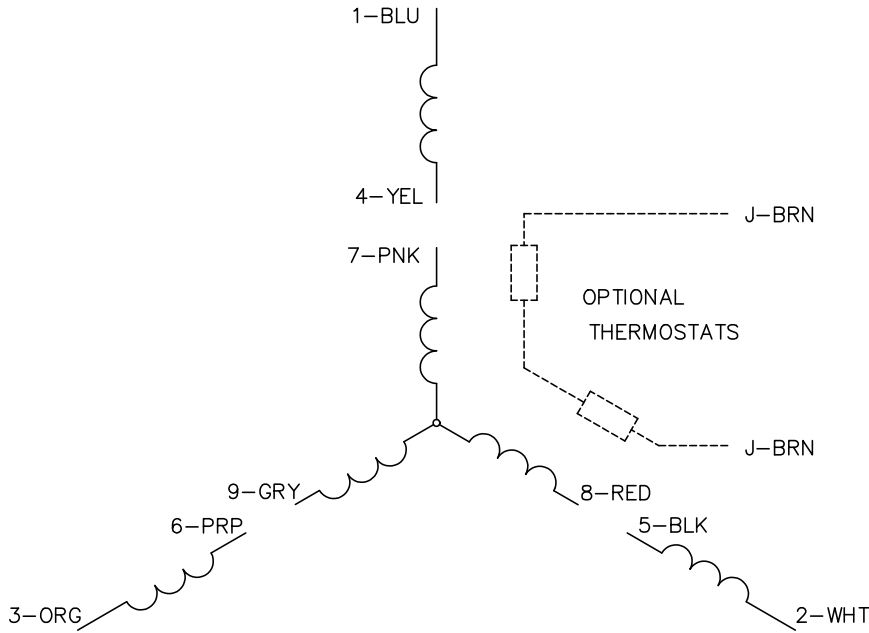
TORQUES (LB-FT): PO=65.1 PU=35.75 LR=43.59 LRA=57.03



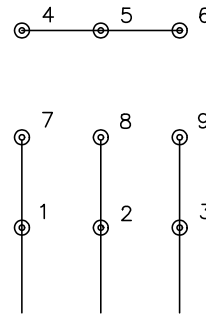
4/7/2025 ACPERF, record # 78060



CD0005

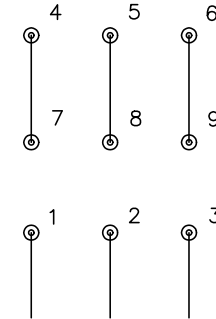


LOW VOLTAGE  
(2Y)



LINE

HIGH VOLTAGE  
(1Y)



LINE

NOTES:

1. INTERCHANGE ANY TWO LINE LEADS TO REVERSE ROTATION.
2. OPTIONAL THERMOSTATS ARE PROVIDED WHEN SPECIFIED.
3. ACTUAL NUMBER OF INTERNAL PARALLEL CIRCUITS MAY BE A MULTIPLE OF THOSE SHOWN ABOVE.
4. LEAD COLORS ARE OPTIONAL. LEADS MUST ALWAYS BE NUMBERED AS SHOWN.

CD0005

REV. DESC: REVISE TO SHOW OPTIONAL COLORS

REV. LTR: E BY: JLP REVISED: 01/19/99 10:15 TDR: 0171435

500000

FILE: AAA00005140

MDL: -

MTL: -

**BALDOR ELECTRIC Co.**

3PH, DV, 9 LEADS