



Customer information packet

CXL181542

1.5HP, 1725RPM, 1PH, 60HZ, 184C, 3628L, XPFC, F
Class - CLI GP D; CLII GP F,G
Division - Division I

Specifications

Enclosure	XPFC
Frame	184C
Frame Material	Steel
Frequency	60.00 Hz
Haz Area Class and Group	CLI GP D; CLII GP F,G
Haz Area Division	Division I
Motor Letter Type	Cap Start, Induction Run
Output @ Frequency	1.500 HP @ 60 HZ
Phase	1
Synchronous Speed @ Frequency	1800 RPM @ 60 HZ
Voltage @ Frequency	230.0 V @ 60 HZ 115.0 V @ 60 HZ
Agency Approvals	CSA UL
Ambient Temperature	40 °C
Auxillary Box	No Auxillary Box
Auxillary Box Lead Termination	None
Base Indicator	Rigid
Bearing Grease Type	Polyrex EM (-20F +300F)
Blower	None
Current @ Voltage	9.500 A @ 230.0 V 19.000 A @ 115.0 V
Design Code	L
Drip Cover	No Drip Cover
Duty Rating	CONT
Efficiency @ 100% Load	70.0 %
Electrically Isolated Bearing	Not Electrically Isolated
Feedback Device	NO FEEDBACK
Front Face Code	Standard
Front Shaft Indicator	None
Haz Area Temp Code	T3C
Heater Indicator	No Heater

Part detail

Revision	AN
Type	AC
Mech. spec.	36N011
Base	
Status	PRD/A
Elec. spec.	36WG0079
Layout	36LYN011
Eff. date	09-12-2024
CD Diagram	CD0001
Poles	04
Leads	4#14 A PH,2#16 B PH
Proprietary	False
Created date	01-01-0001

High Voltage Full Load Amps	9.5 a
Insulation Class	F
Inverter Code	Not Inverter
KVA Code	L
Lifting Lugs	No Lifting Lugs
Locked Bearing Indicator	No Locked Bearing
Motor Lead Exit	Ko Box
Motor Lead Quantity/Wire Size	4 @ 14 AWG, A PH
Motor Lead Termination	Flying Leads
Motor Standards	NEMA
Motor Type	X3628L
Mounting Arrangement	F1
Number of Poles	4
Overall Length	16.93 IN
Power Factor	70
Product Family	General Purpose
Pulley End Bearing Type	Ball
Pulley Face Code	C-Face
Pulley Shaft Indicator	Standard
Rodent Screen	None
RoHS Status	ROHS NON-COMPLIANT
Service Factor	1.15
Shaft Diameter	0.875 IN
Shaft Extension Location	Pulley End
Shaft Ground Indicator	No Shaft Grounding
Shaft Rotation	Reversible
Shaft Slinger Indicator	No Slinger
Speed	1725 rpm
Speed Code	Single Speed
Starting Method	Direct on line
Thermal Device - Bearing	None
Thermal Device - Winding	Normally Closed Thermostat
Vibration Sensor Indicator	No Vibration Sensor
Winding Thermal 1	None

Winding Thermal 2

None

Nameplate

NP1426XPSL					
NO.		CC			
SER.					
SPEC.	36N11-79G1				
CAT.NO.	CXL181542				
HP	1.5	T. CODE	T3C		
VOLTS	115/230				
AMPS	19/9.5				
RPM	1725				
HZ	60	PH	1	CL	F
SER.F.	1.15	DES	L	CODE	L
RATING	40C AMB-CONT				
FRAME	184C	NEMA-NOM-EFF		70	
	PF	70			
BLANK					

AC Induction Motor Performance Data

Record # 96049

Typical performance - not guaranteed values

Winding: 36WG0079-R011		Type: 3628L		Enclosure: XPFC	
Nameplate Data			230 V, 60 Hz: High Voltage Connection		
Rated Output (HP)	1.5		Full Load Torque	4.5 LB-FT	
Volts	115/230		Start Configuration	direct on line	
Full Load Amps	19/9.5		Breakdown Torque	14 LB-FT	
R.P.M.	1725		Pull-up Torque	12 LB-FT	
Hz	60 Phase	1	Locked-rotor Torque	16 LB-FT	
NEMA Design Code	L KVA Code	L	Starting Current	68 A	
Service Factor (S.F.)	1.15		No-load Current	7.1 A	
NEMA Nom. Eff.	70 Power Factor	70	Line-line Res. @ 25°C	1.16 Ω A Ph 0.581 Ω B Ph	
Rating - Duty	40C AMB-CONT		Temp. Rise @ Rated Load	67°C	
S.F. Amps			Temp. Rise @ S.F. Load	76°C	

Load Characteristics 230 V, 60 Hz, 1.5 HP

% of Rated Load	25	50	75	100	125	150	S.F.
Power Factor	38	50	61	68	75	79	72
Efficiency	56.2	66.9	72.6	77.7	76.2	72.8	76.8
Speed	1784	1776	1764	1754	1742	1727	1747
Line amperes	7.3	7.8	8.8	9.6	10.9	12.6	10.4

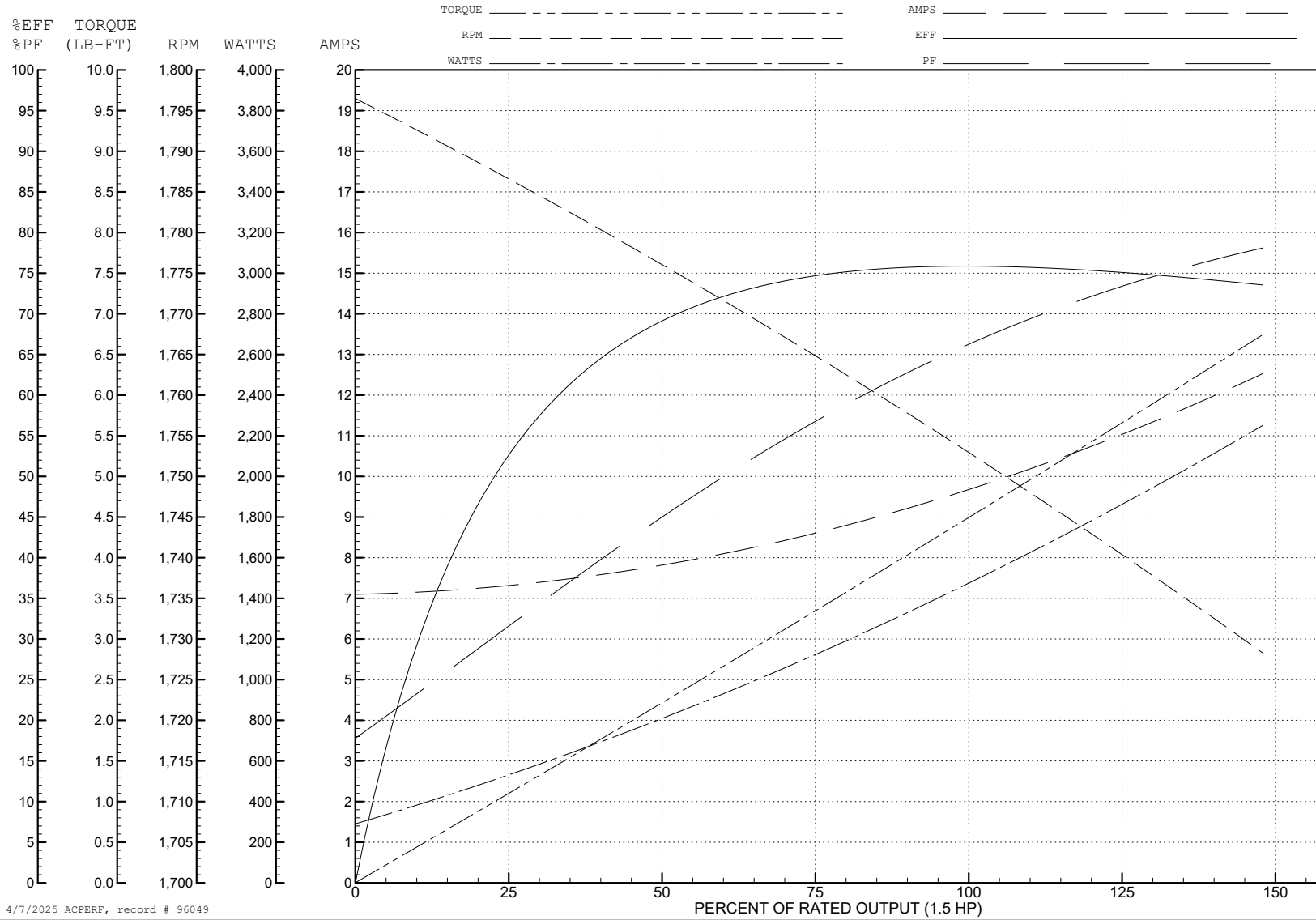
ABB Motors and Mechanical Inc.

WINDING # 36WG0079

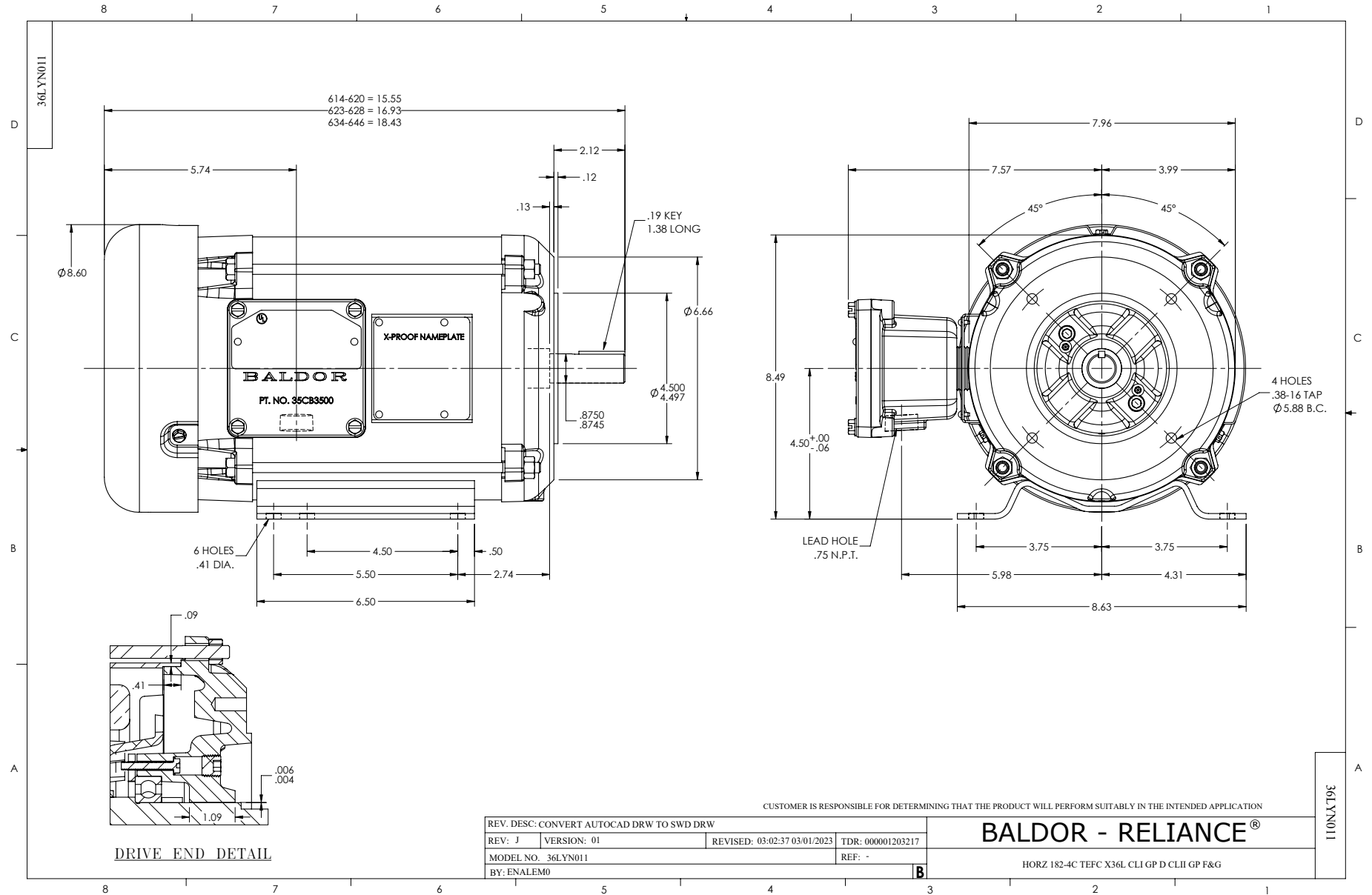
Typical performance - not guaranteed values.

1.5 HP 1 PH 60 HZ 1725 RPM 230 V 3628L

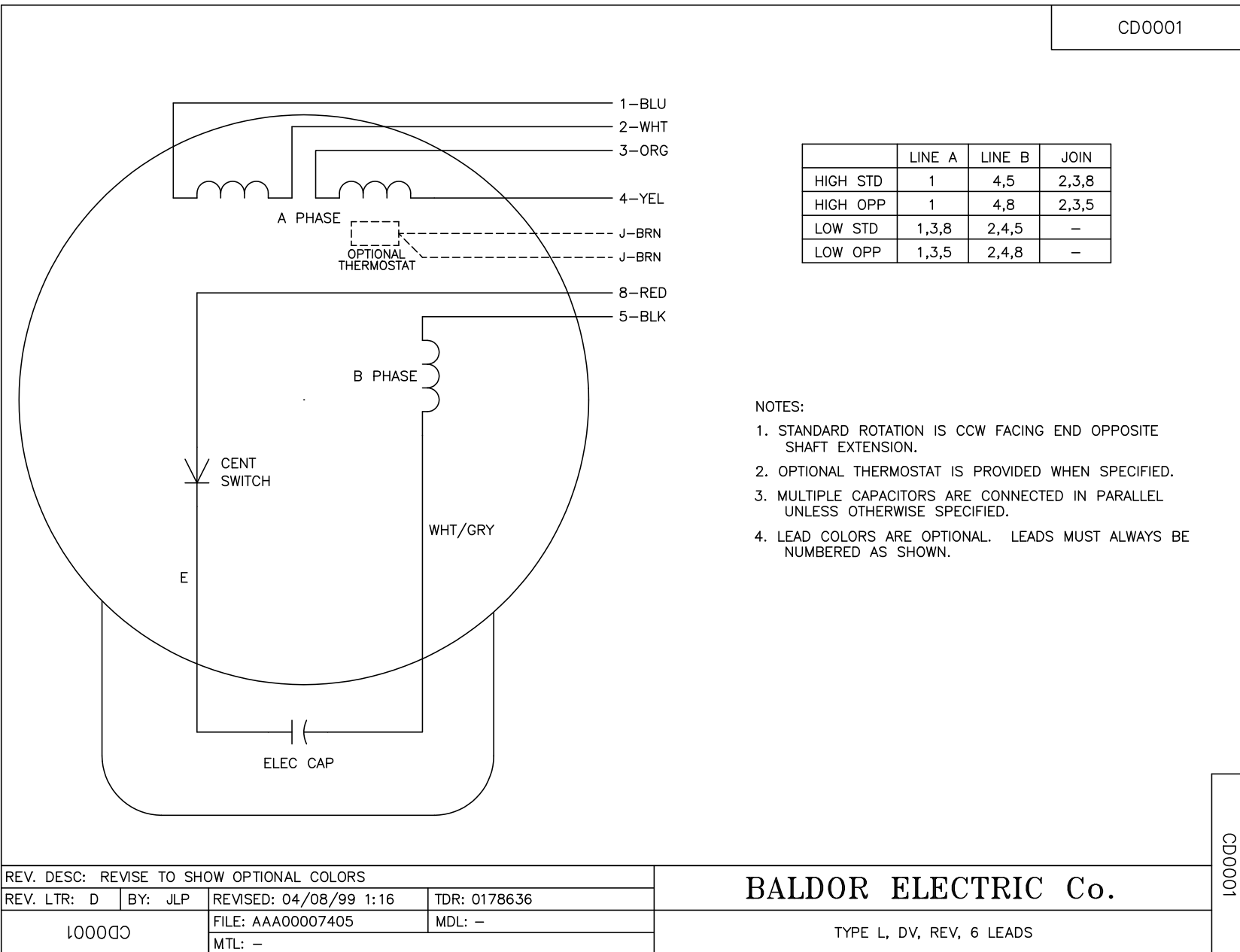
TORQUES (LB-FT): PO=14 PU=12 LR=16 LRA=68



4/7/2025 ACPERF, record # 96049



CD0001



	LINE A	LINE B	JOIN
HIGH STD	1	4,5	2,3,8
HIGH OPP	1	4,8	2,3,5
LOW STD	1,3,8	2,4,5	-
LOW OPP	1,3,5	2,4,8	-

- NOTES:
1. STANDARD ROTATION IS CCW FACING END OPPOSITE SHAFT EXTENSION.
 2. OPTIONAL THERMOSTAT IS PROVIDED WHEN SPECIFIED.
 3. MULTIPLE CAPACITORS ARE CONNECTED IN PARALLEL UNLESS OTHERWISE SPECIFIED.
 4. LEAD COLORS ARE OPTIONAL. LEADS MUST ALWAYS BE NUMBERED AS SHOWN.

CD0001

REV. DESC: REVISE TO SHOW OPTIONAL COLORS			
REV. LTR: D	BY: JLP	REVISED: 04/08/99 1:16	TDR: 0178636
100000		FILE: AAA00007405	MDL: -
		MTL: -	

BALDOR ELECTRIC Co.

TYPE L, DV, REV, 6 LEADS