

BALDOR • RELIANCE

Customer information packet

37A03W453

7.5HP, 1425RPM, 3PH, 50HZ, 213TC, 3734M, TEFC

Class - None

Division - Not Applicable

Specifications

Enclosure	TEFC
Frame	213TC
Frame Material	Steel
Frequency	50.00 Hz
Haz Area Class and Group	None
Haz Area Division	Not Applicable
Motor Letter Type	Three Phase
Output @ Frequency	7.500 HP @ 50 HZ
Phase	3
Synchronous Speed @ Frequency	1500 RPM @ 50 HZ
Voltage @ Frequency	440.0 V @ 50 HZ 380.0 V @ 50 HZ 220.0 V @ 50 HZ
Agency Approvals	CSA UR
Ambient Temperature	40 °C
Auxillary Box	No Auxillary Box
Auxillary Box Lead Termination	None
Base Indicator	No Mounting
Bearing Grease Type	Polyrex EM (-20F +300F)
Blower	None
Current @ Voltage	22.000 A @ 220.0 V 12.700 A @ 380.0 V 11.000 A @ 440.0 V
Design Code	B
Drip Cover	No Drip Cover
Duty Rating	CONT
Efficiency @ 100% Load	84.0 %
Electrically Isolated Bearing	Not Electrically Isolated
Feedback Device	NO FEEDBACK
Front Face Code	Standard
Front Shaft Indicator	None

Part detail

Revision	W
Type	AC
Mech. spec.	37A003
Base	
Status	PRD/A
Elec. spec.	37WGW453
Layout	37LYA003
Eff. date	06-07-2024
CD Diagram	CD0044
Poles	04
Leads	12#14
Proprietary	False
Created date	01-01-0001

Heater Indicator	No Heater
High Voltage Full Load Amps	11.0 a
Insulation Class	F
Inverter Code	Not Inverter
KVA Code	K
Lifting Lugs	No Lifting Lugs
Locked Bearing Indicator	Locked Bearing
Motor Lead Exit	Ko Box
Motor Lead Quantity/Wire Size	12 @ 14 AWG
Motor Lead Termination	Flying Leads
Motor Standards	NEMA
Motor Type	3734M
Mounting Arrangement	F1
Number of Poles	4
Overall Length	18.63 IN
Power Factor	81
Product Family	General Purpose
Pulley End Bearing Type	Ball
Pulley Face Code	C-Face
Pulley Shaft Indicator	Standard
Rodent Screen	None
RoHS Status	ROHS COMPLIANT
Service Factor	1.00
Shaft Diameter	1.375 IN
Shaft Extension Location	Pulley End
Shaft Ground Indicator	No Shaft Grounding
Shaft Rotation	Reversible
Shaft Slinger Indicator	No Slinger
Speed	1425 rpm
Speed Code	Single Speed
Starting Method	Direct on line
Thermal Device - Bearing	None
Thermal Device - Winding	None
Vibration Sensor Indicator	No Vibration Sensor

Winding Thermal 1

None

Winding Thermal 2

None

Nameplate

NP1256L									
CAT.NO.									
SPEC.	37A03W453								
HP	7.5								
VOLTS	220/380/440								
AMP	22/12.7/11								
RPM	1425								
FRAME	213TC		HZ	50		PH	3		
SER.F.	1.00	CODE	K	DES	B	CLASS	F		
NEMA-NOM-EFF	84	PF	81						
RATING	40C AMB-CONT								
CC									
DE	6307		ODE	6206					
ENCL	TEFC	SN							

AC Induction Motor Performance Data

Record # 11851

Typical performance - not guaranteed values

Winding: 37WGW453-R001		Type: 3734M	Enclosure: TEFC	
Nameplate Data		440 V, 50 Hz: High Voltage Connection		
Rated Output (HP)	7.5	Full Load Torque	27.55 LB-FT	
Volts	220/380/440	Start Configuration	direct on line	
Full Load Amps	22/12.7/11	Breakdown Torque	88.73 LB-FT	
R.P.M.	1425	Pull-up Torque	61.46 LB-FT	
Hz	50 Phase	3	Locked-rotor Torque	70.38 LB-FT
NEMA Design Code	B KVA Code	K	Starting Current	64.05 A
Service Factor (S.F.)		1	No-load Current	6.37 A
NEMA Nom. Eff.	84 Power Factor	81	Line-line Res. @ 25°C	2.18 Ω
Rating - Duty	40C AMB-CONT		Temp. Rise @ Rated Load	85°C
			Locked-rotor Power Factor	53.6
			Rotor inertia	0.713 LB-FT ²

Load Characteristics 440 V, 50 Hz, 7.5 HP

% of Rated Load	25	50	75	100	125	150
Power Factor	39	60	72	79	82	83
Efficiency	72.4	81.1	83.1	83	81.6	79.6
Speed	1484	1468	1452	1434	1413	1390
Line amperes	6.77	7.78	9.29	11.21	13.51	16.14

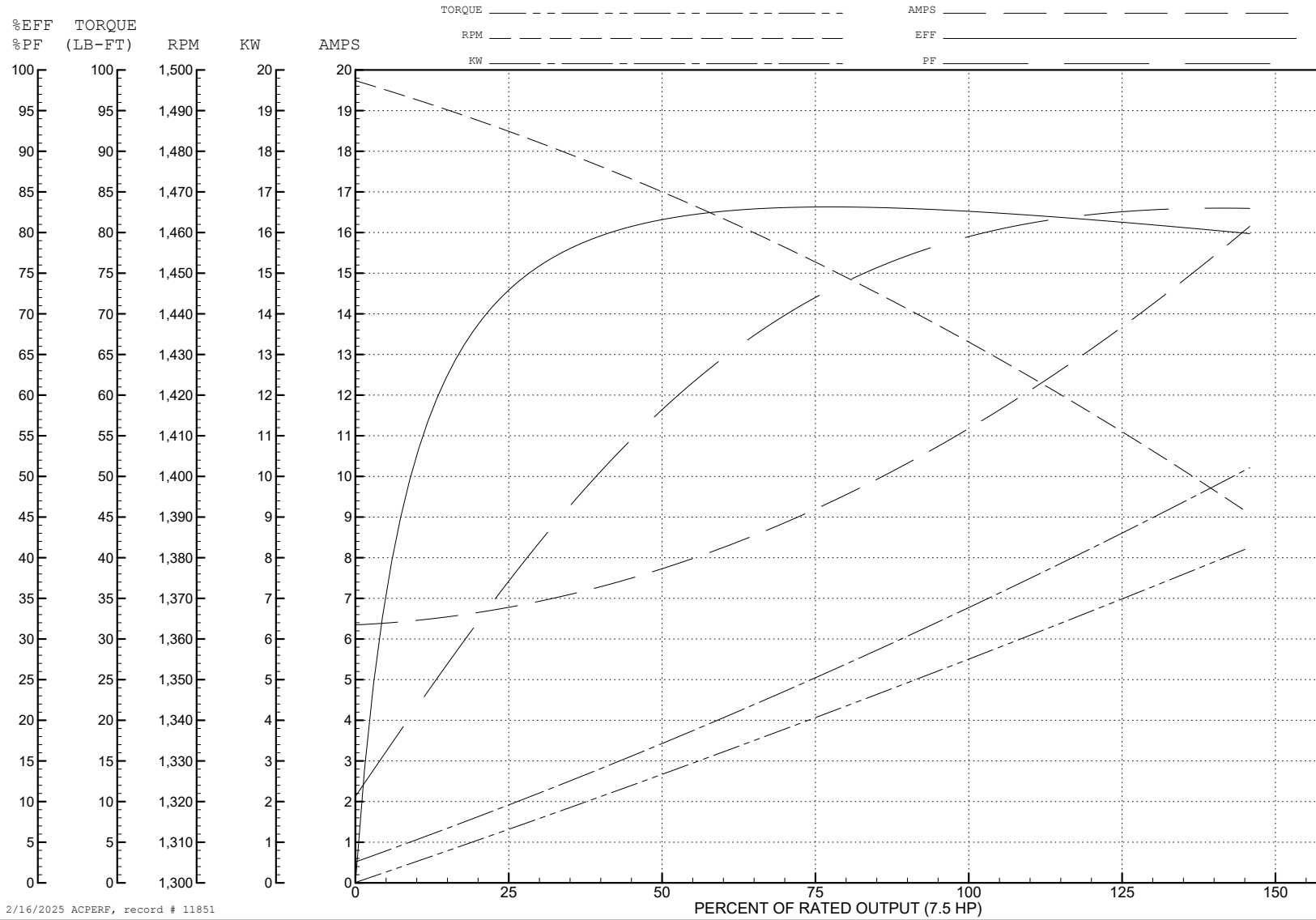
ABB Motors and Mechanical Inc.

WINDING # 37WGW453

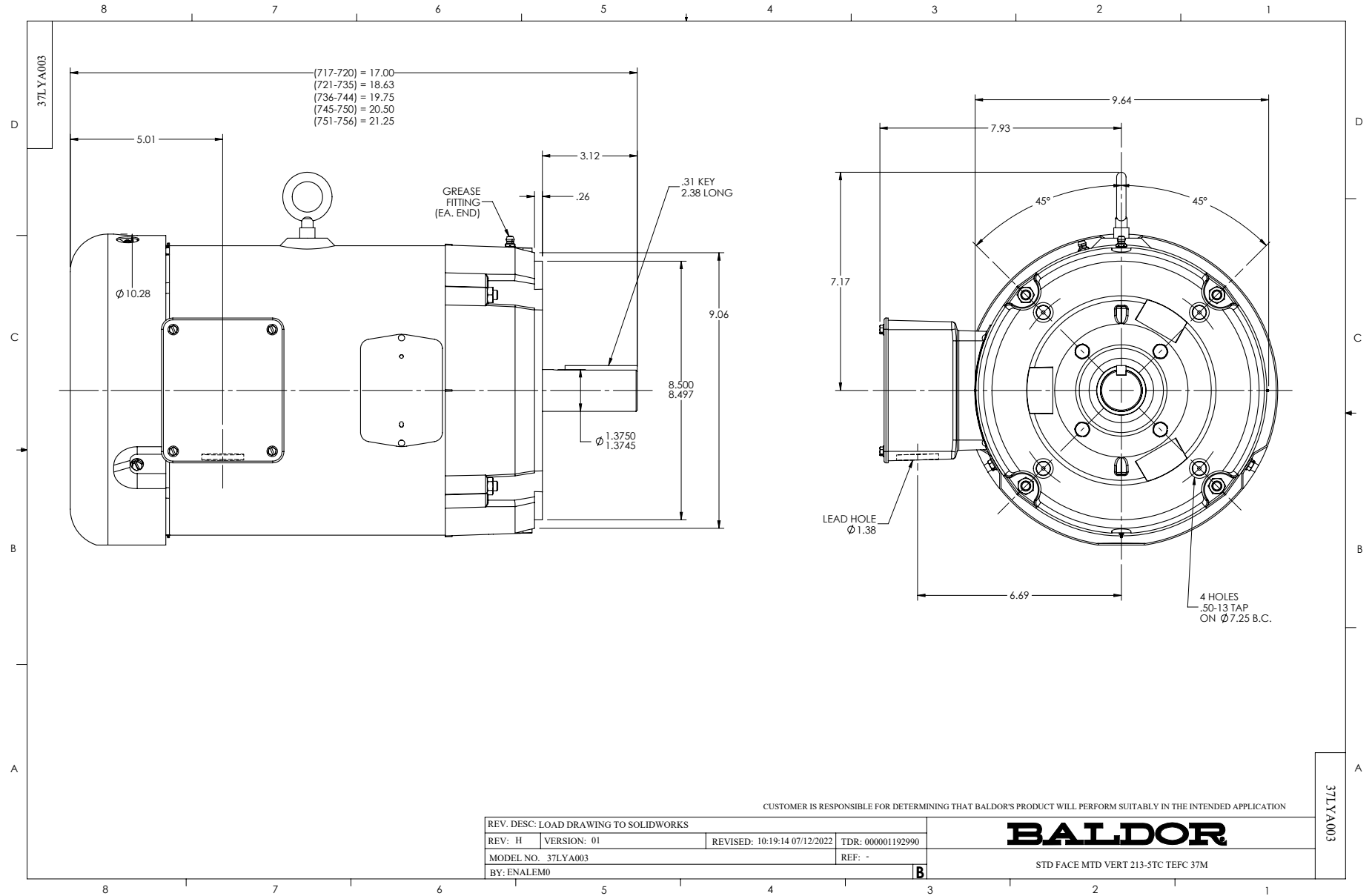
Typical performance - not guaranteed values.

7.5 HP 3 PH 50 HZ 1425 RPM 440 V 3734M

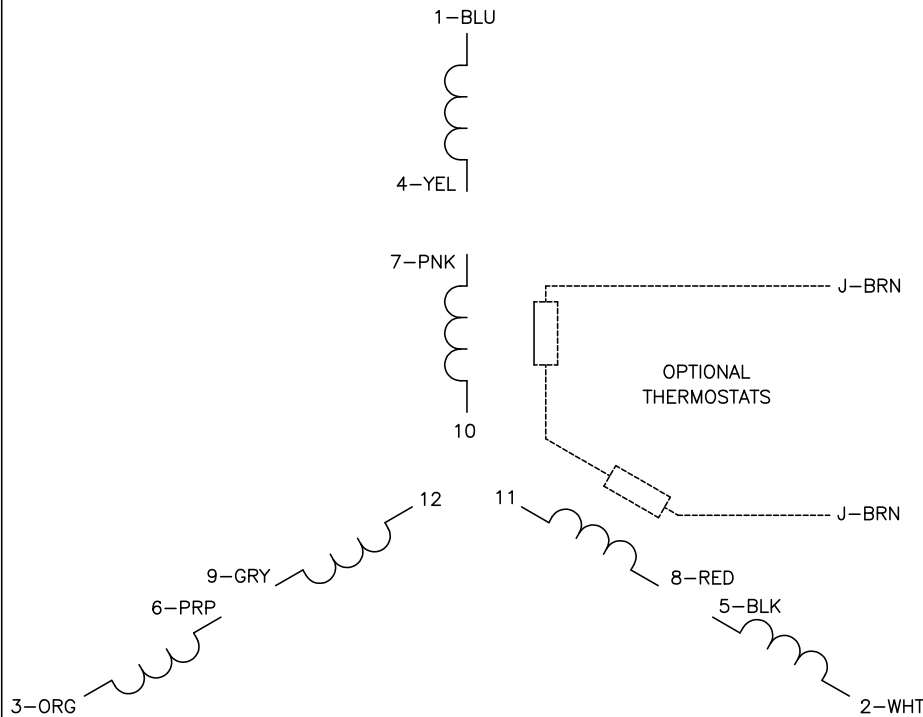
TORQUES (LB-FT): PO=88.73 PU=61.46 LR=70.38 LRA=64.05



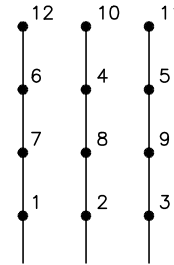
2/16/2025 ACPERF, record # 11851



CD0044

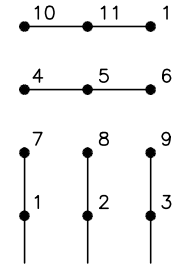


LOW VOLTAGE
(2D)



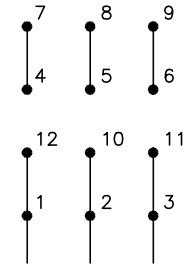
LINE

MED. VOLTAGE
(2Y)



LINE

HIGH VOLTAGE
(1D)



LINE

NOTES:

1. INTERCHANGE ANY TWO LINE LEADS TO REVERSE ROTATION.
2. OPTIONAL THERMOSTATS ARE PROVIDED WHEN SPECIFIED.
3. ACTUAL NUMBER OF INTERNAL PARALLEL CIRCUITS MAY BE A MULTIPLE OF THOSE SHOWN ABOVE.
4. LEAD COLORS ARE OPTIONAL. LEADS MUST ALWAYS BE NUMBERED AS SHOWN.

CD0044

REV. DESC: REVISE TO SHOW OPTIONAL COLORS			
REV. LTR: G	BY: JLP	REVISED: 01/19/99 4:09	TDR: 0171435
CD0044		FILE: AAA00008373	MDL: -
		MTL: -	

BALDOR ELECTRIC Co.

3PH, TV, 12 LEADS, 2D/2Y/1D