

BALDOR • RELIANCE

Customer information packet

CXL18242T

2HP, 1750RPM, 1PH, 60HZ, 184TC, 3634L, XPFC, F1

Class - CLI GP D; CLII GP F,G

Division - Division I

Specifications

Enclosure	XPFC
Frame	184TC
Frame Material	Steel
Frequency	60.00 Hz
Haz Area Class and Group	CLI GP D; CLII GP F,G
Haz Area Division	Division I
Motor Letter Type	Cap Start, Induction Run
Output @ Frequency	2.000 HP @ 60 HZ
Phase	1
Synchronous Speed @ Frequency	1800 RPM @ 60 HZ
Voltage @ Frequency	230.0 V @ 60 HZ 115.0 V @ 60 HZ 208.0 V @ 60 HZ
Agency Approvals	CSA UL
Ambient Temperature	40 °C
Auxillary Box	No Auxillary Box
Auxillary Box Lead Termination	None
Base Indicator	Rigid
Bearing Grease Type	Polyrex EM (-20F +300F)
Blower	None
Current @ Voltage	11.000 A @ 230.0 V 11.600 A @ 208.0 V 22.000 A @ 115.0 V
Design Code	L
Drip Cover	No Drip Cover
Duty Rating	CONT
Efficiency @ 100% Load	75.0 %
Electrically Isolated Bearing	Not Electrically Isolated
Feedback Device	NO FEEDBACK
Haz Area Temp Code	T3C
Heater Indicator	No Heater

Part detail

Revision	E
Type	AC
Mech. spec.	
Base	
Status	PRD/A
Elec. spec.	36WG0203
Layout	36LY-000-114
Eff. date	02-22-2024
CD Diagram	CD0001
Poles	04
Leads	4#14 A PH,2#16 B PH
Proprietary	False
Created date	04-07-2021

High Voltage Full Load Amps	11.0 a
Insulation Class	F
IP Rating	NONE
KVA Code	H
Lifting Lugs	No Lifting Lugs
Locked Bearing Indicator	Locked Bearing
Motor Lead Termination	Flying Leads
Motor Standards	NEMA
Motor Type	3634L
Mounting Arrangement	F1
Number of Poles	4
Overall Length	18.86 IN
Power Factor	81
Product Family	General Purpose
Pulley Face Code	C-Face
Rodent Screen	None
RoHS Status	ROHS NON-COMPLIANT
Service Factor	1.15
Shaft Diameter	1.125 IN
Shaft Ground Indicator	No Shaft Grounding
Shaft Rotation	Reversible
Speed	1730 rpm
Speed Code	Single Speed
Starting Method	Direct on line
Thermal Device - Bearing	None
Thermal Device - Winding	Normally Closed Thermostat
Vibration Sensor Indicator	No Vibration Sensor
Winding Thermal 1	None
Winding Thermal 2	None

Nameplate

NP1426XPSL										
NO.		CC								
SER.										
SPEC.	36-0000-0505									
CAT.NO.	CXL18242T									
HP	2	T. CODE	T3C							
VOLTS	115/208-230									
AMPS	22/11.6-11									
RPM	1730									
HZ	60	PH	1	CL	F					
SER.F.	1.15	DES	L	CODE	H					
RATING	40C AMB-CONT									
FRAME	184TC	NEMA-NOM-EFF	75							
	PF	81								
BLANK	NEMA MG-1 PART 5, IP54									

AC Induction Motor Performance Data

Record # 93614

Typical performance - not guaranteed values

Winding: 36WG0203-R016		Type: 3634L		Enclosure: XPFC	
Nameplate Data			230 V, 60 Hz: High Voltage Connection		
Rated Output (HP)	2	Full Load Torque	6 LB-FT		
Volts	115/208-230	Start Configuration	direct on line		
Full Load Amps	22/11.6-11	Breakdown Torque	14.5 LB-FT		
R.P.M.	1730	Pull-up Torque	13 LB-FT		
Hz	60 Phase	1	Locked-rotor Torque	16.6 LB-FT	
NEMA Design Code	L	KVA Code	H	Starting Current	61 A
Service Factor (S.F.)	1.15		No-load Current	6.5 A	
NEMA Nom. Eff.	75	Power Factor	81	Line-line Res. @ 25°C	0.244 Ω A Ph 0.632 Ω B Ph
Rating - Duty	40C AMB-CONT		Temp. Rise @ Rated Load	70°C	
S.F. Amps			Temp. Rise @ S.F. Load	82°C	

Load Characteristics 230 V, 60 Hz, 2 HP

% of Rated Load	25	50	75	100	125	150	S.F.
Power Factor	40	58	69	76	80	81	78
Efficiency	63.1	72.3	74.3	75	72	68.3	73.2
Speed	1783	1769	1753	1733	1711	1689	1720
Line amperes	7	8.05	9.7	11	13.9	16.2	12.7

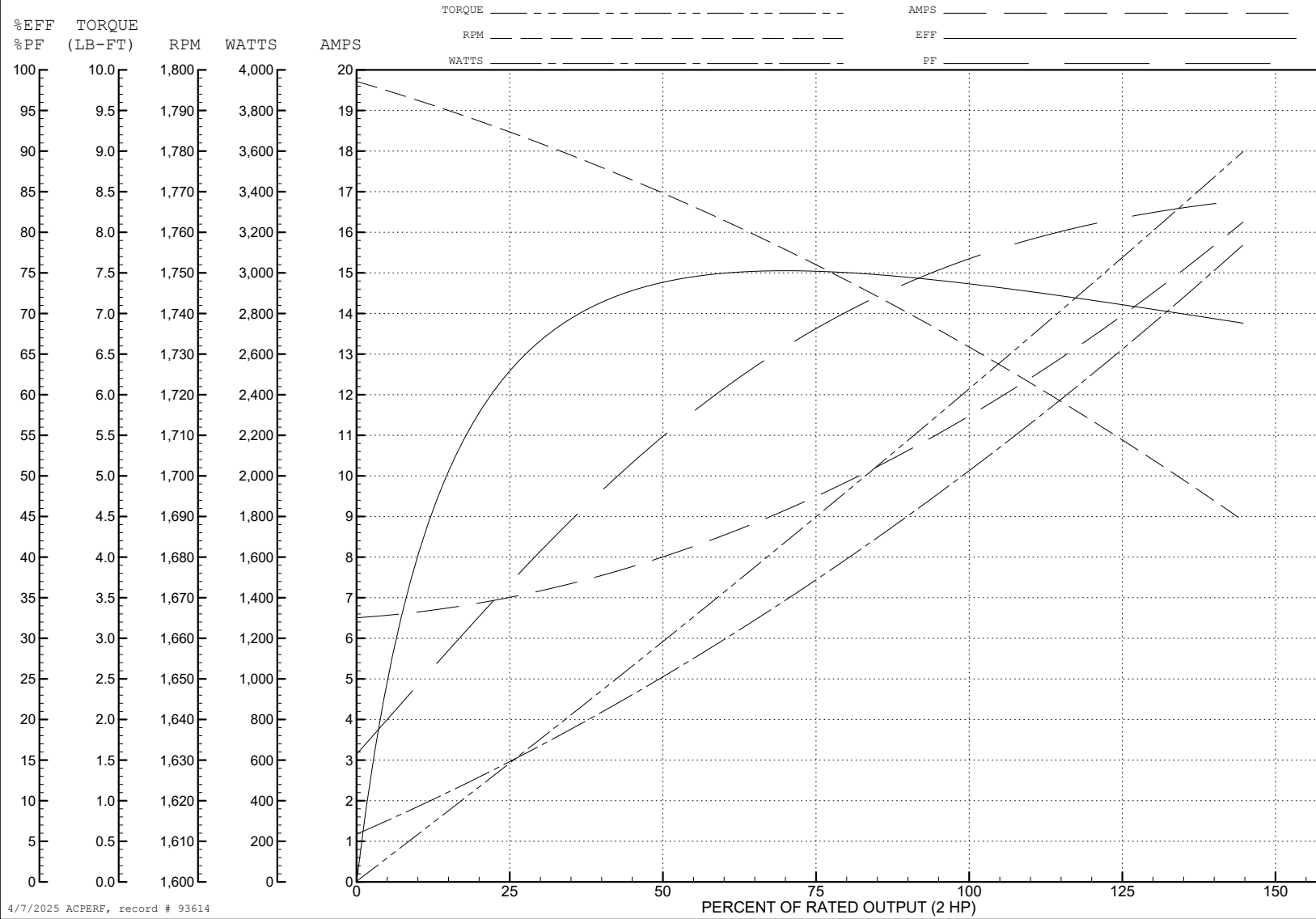
ABB Motors and Mechanical Inc.

WINDING # 36WG0203

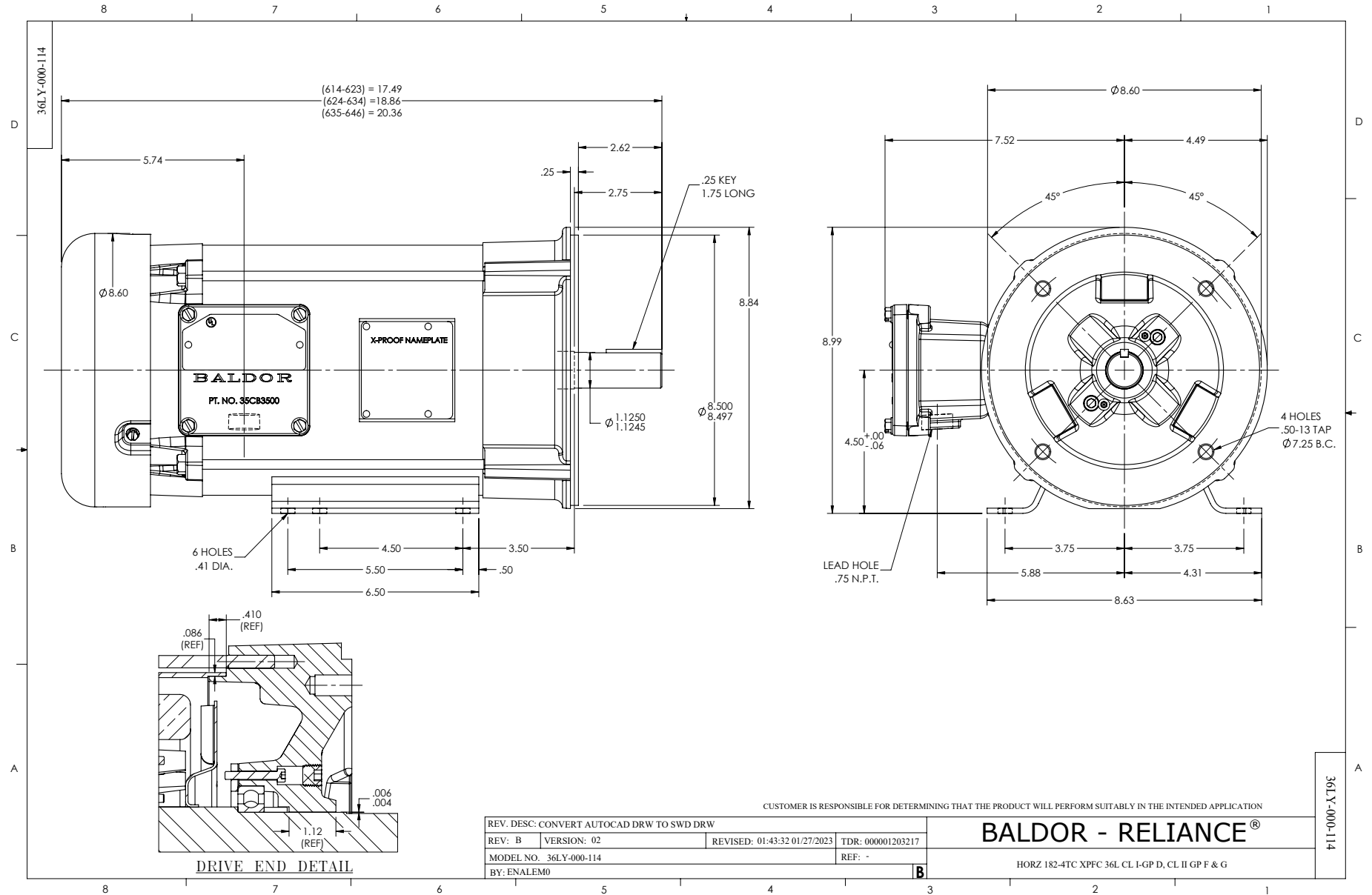
Typical performance - not guaranteed values.

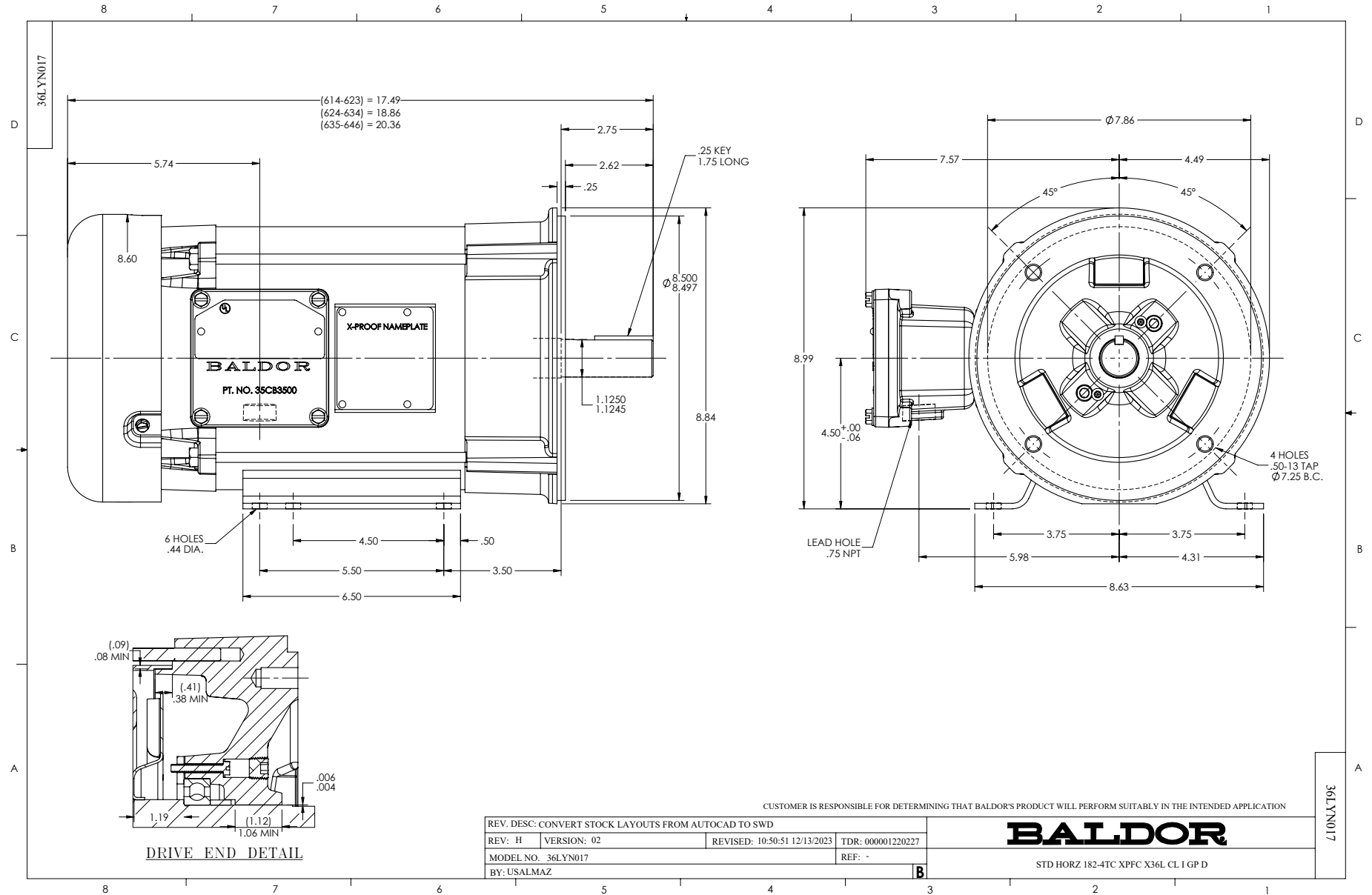
2 HP 1 PH 60 HZ 1730 RPM 230 V 3634L

TORQUES (LB-FT): PO=14.5 PU=13 LR=16.6 LRA=61

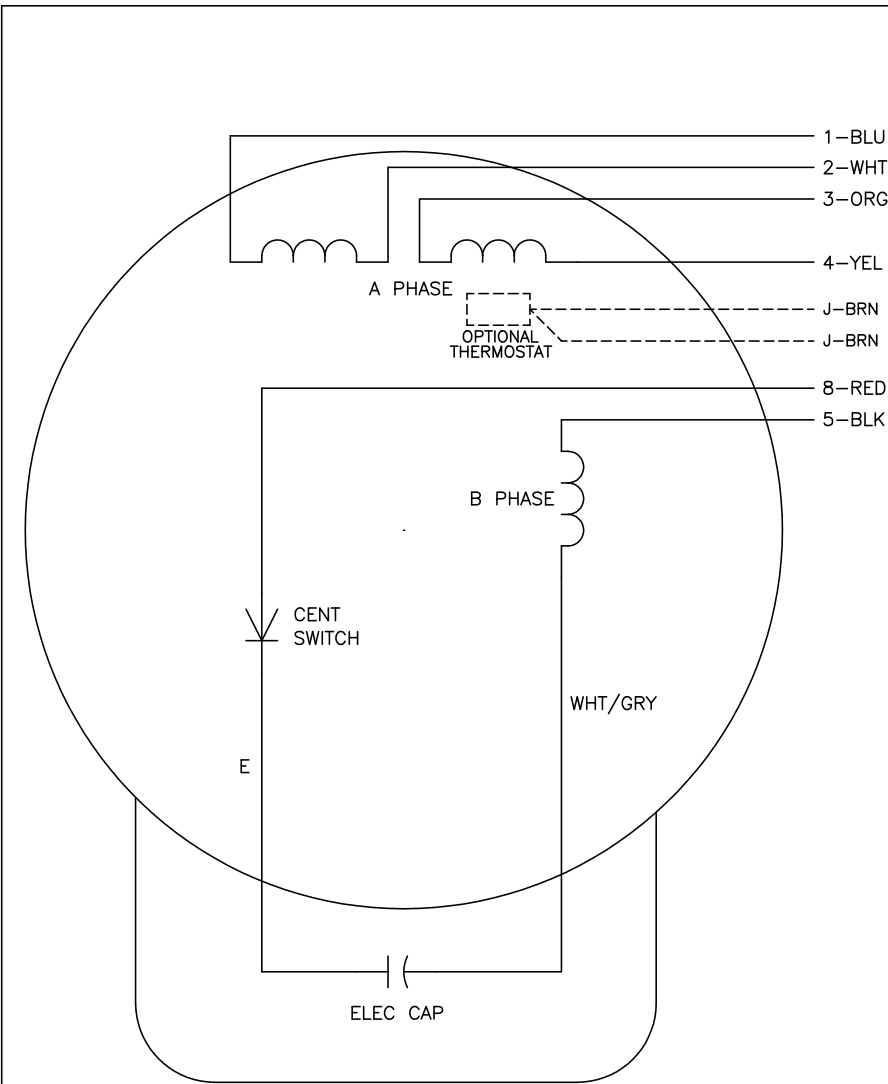


4/7/2025 ACPERF, record # 93614





CD0001



	LINE A	LINE B	JOIN
HIGH STD	1	4,5	2,3,8
HIGH OPP	1	4,8	2,3,5
LOW STD	1,3,8	2,4,5	-
LOW OPP	1,3,5	2,4,8	-

NOTES:

1. STANDARD ROTATION IS CCW FACING END OPPOSITE SHAFT EXTENSION.
2. OPTIONAL THERMOSTAT IS PROVIDED WHEN SPECIFIED.
3. MULTIPLE CAPACITORS ARE CONNECTED IN PARALLEL UNLESS OTHERWISE SPECIFIED.
4. LEAD COLORS ARE OPTIONAL. LEADS MUST ALWAYS BE NUMBERED AS SHOWN.

REV. DESC: REVISE TO SHOW OPTIONAL COLORS			
REV. LTR: D	BY: JLP	REVISED: 04/08/99 1:16	TDR: 0178636
100000		FILE: AAA00007405	MDL: -
		MTL: -	

BALDOR ELECTRIC Co.

TYPE L, DV, REV, 6 LEADS

CD0001