

BALDOR • RELIANCE

Customer information packet

VXM141562T

1.5//1HP, 1165//970RPM, 3PH, 60//50HZ, 145TC

Class - CLI GP D; CLII GP F,G

Division - Division I

Specifications

Enclosure	XPFC
Frame	145TC
Frame Material	Steel
Frequency	50.00 Hz 60.00 Hz
Haz Area Class and Group	CLI GP D; CLII GP F,G
Haz Area Division	Division I
Motor Letter Type	Three Phase
Output @ Frequency	1.500 HP @ 60 HZ 1.000 HP @ 50 HZ
Phase	3
Synchronous Speed @ Frequency	1200 RPM @ 60 HZ
Voltage @ Frequency	460.0 V @ 60 HZ 190.0 V @ 50 HZ 230.0 V @ 60 HZ 380.0 V @ 50 HZ
Agency Approvals	UL CSA EEV
Ambient Temperature	40 °C
Auxillary Box	No Auxillary Box
Auxillary Box Lead Termination	None
Base Indicator	No Mounting
Bearing Grease Type	Polyrex EM (-20F +300F)
Blower	None
Constant Torque Speed Range	6
Current @ Voltage	2.100 A @ 380.0 V 2.400 A @ 460.0 V 4.200 A @ 190.0 V 4.800 A @ 230.0 V
Design Code	B
Drip Cover	No Drip Cover
Duty Rating	CONT

Part detail

Revision	B
Type	AC
Mech. spec.	
Base	
Status	PRD/A
Elec. spec.	36WGS916
Layout	36LYT390
Eff. date	01-27-2025
CD Diagram	CD0005
Poles	06
Leads	9#16
Proprietary	False
Created date	03-11-2021

Efficiency @ 100% Load	87.5 %
Electrically Isolated Bearing	Not Electrically Isolated
Feedback Device	NO FEEDBACK
Haz Area Temp Code	T2C
Heater Indicator	No Heater
High Voltage Full Load Amps	2.1 a
Insulation Class	B
Inverter Code	Inverter Duty
IP Rating	NONE
KVA Code	K
Lifting Lugs	No Lifting Lugs
Locked Bearing Indicator	Locked Bearing
Max Speed	1800 rpm
Motor Lead Termination	Flying Leads
Motor Standards	NEMA
Motor Type	3632M
Mounting Arrangement	F1
Number of Poles	6
Overall Length	18.42 IN
Power Factor	67
Product Family	General Purpose
Pulley Face Code	C-Face
Rodent Screen	None
RoHS Status	ROHS NON-COMPLIANT
Service Factor	1.00
Shaft Diameter	0.875 IN
Shaft Ground Indicator	No Shaft Grounding
Shaft Rotation	Reversible
Speed	1165 rpm
Speed Code	Single Speed
Starting Method	Direct on line
Thermal Device - Bearing	None
Thermal Device - Winding	None
Vibration Sensor Indicator	No Vibration Sensor

Winding Thermal 1	None
Winding Thermal 2	None

Nameplate

NP0887XPSLEV

NO.		CC	010A		
S/N		TEMP CODE	T2C		
SPEC.	36-0000-0481	INV.TYPE	PWM		
CAT.NO.	VXM141562T	C HP FR	60	C HP TO	90
HP	1.5//1	CT HZ FROM	6	CT HZ TO	60
VOLTS	230/460//190/380	VT HZ FROM	6	VT HZ TO	60
AMPS	4.8/2.4//4.2/2.1	MAG CUR	3/1.5		
RPM	1165//970	MX RPM	1800		
HZ	60//50	PH	3	CL	F
		NOM.EFF.	87.5		
SER.F.	1.00	DES	B	SL HZ	1.8
		WK2	0.301		
FRAME	145TC	RATING	40C AMB-CONT		
	NEMA MG-1 PART 5, IP54				
	1.15 SF ON SINE WAVE				

AC Induction Motor Performance Data

Record # 73918

Typical performance - not guaranteed values

Winding: 36WGS916-R035		Type: 3632M		Enclosure: XPFC	
Nameplate Data			460 V, 60 Hz: High Voltage Connection		
Rated Output (HP)	1.5//1		Full Load Torque	6.86 LB-FT	
Volts	230/460//190/380		Start Configuration	direct on line	
Full Load Amps	4.8/2.4//4.2/2.1		Breakdown Torque	23.8 LB-FT	
R.P.M.	1165//970		Pull-up Torque	12.5 LB-FT	
Hz	60//50	Phase	3	Locked-rotor Torque	15.3 LB-FT
NEMA Design Code	B KVA Code		K	Starting Current	15.8 A
Service Factor (S.F.)			1	No-load Current	1.47 A
NEMA Nom. Eff.	87.5	Power Factor	67	Line-line Res. @ 25°C	7.12 Ω
Rating - Duty	40C AMB-CONT			Temp. Rise @ Rated Load	34°C
				Locked-rotor Power Factor	30.1
				Rotor inertia	0.301 LB-FT ²

Load Characteristics 460 V, 60 Hz, 1.5 HP

% of Rated Load	25	50	75	100	125	150
Power Factor	30	48	60	67	71	74
Efficiency	78.8	85.7	87.6	87.4	86.4	85.4
Speed	1192	1185	1177	1168	1158	1148
Line amperes	1.57	1.77	2.07	2.43	2.88	3.36

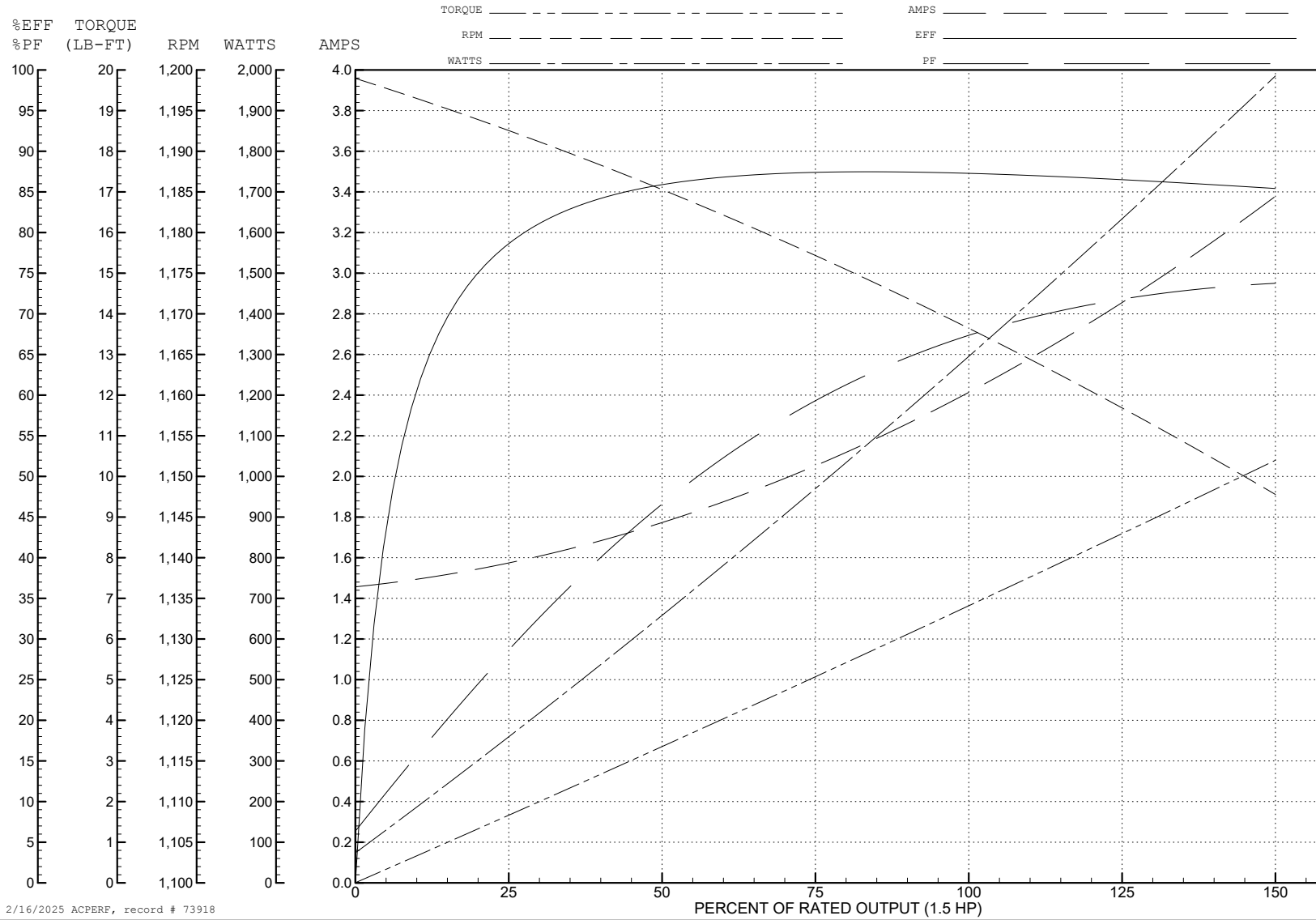
ABB Motors and Mechanical Inc.

WINDING # 36WGS916

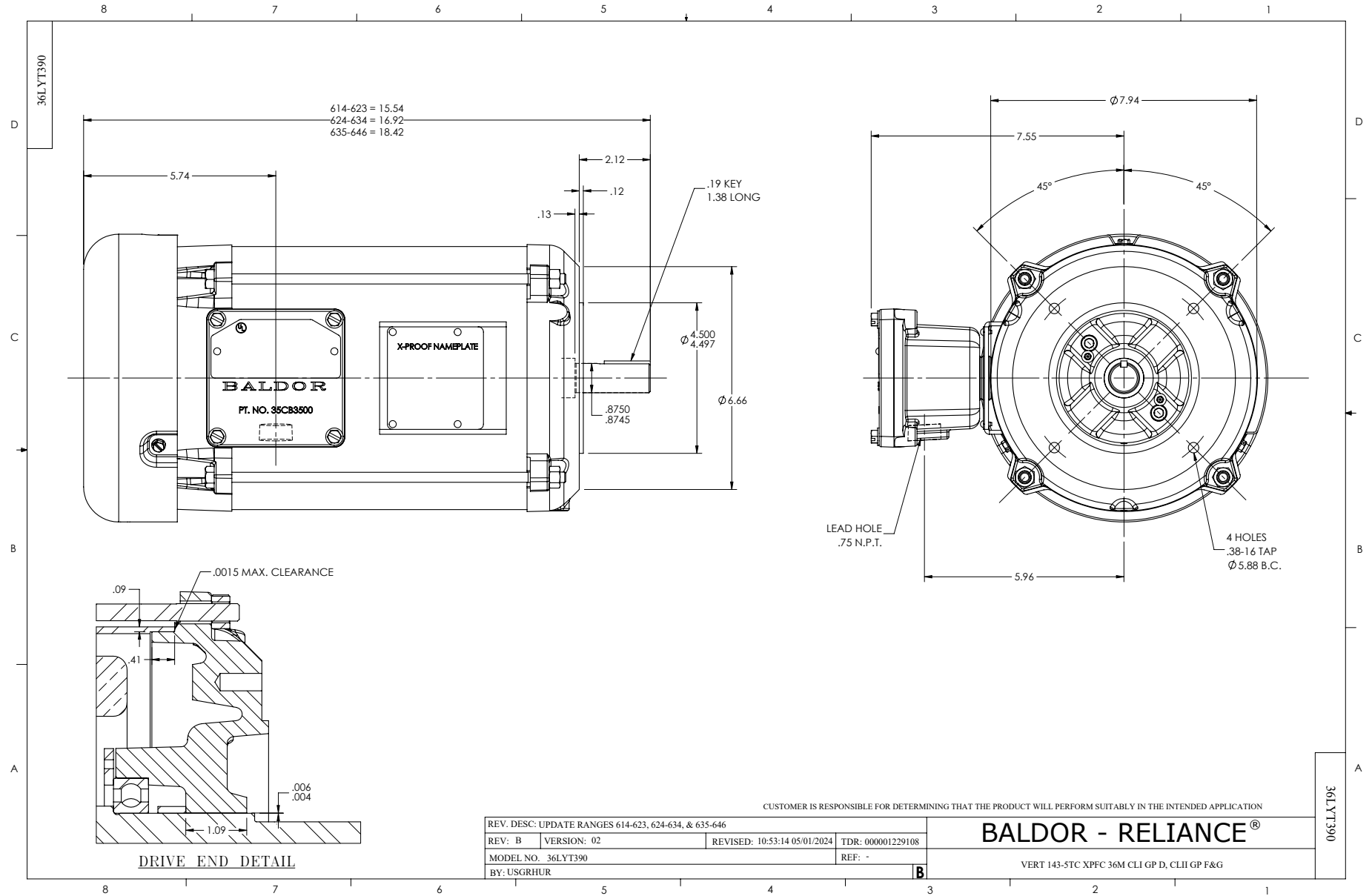
Typical performance - not guaranteed values.

1.5 HP 3 PH 60 HZ 1168 RPM 460 V 3632M

TORQUES (LB-FT): PO=23.8 PU=12.5 LR=15.3 LRA=15.8



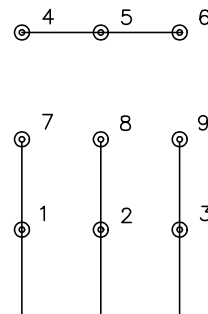
2/16/2025 ACPERF, record # 73918



CD0005

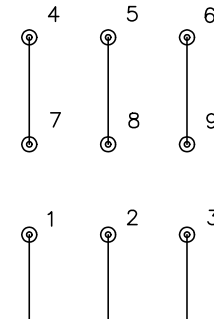


LOW VOLTAGE
(2Y)



LINE

HIGH VOLTAGE
(1Y)



LINE

NOTES:

1. INTERCHANGE ANY TWO LINE LEADS TO REVERSE ROTATION.
2. OPTIONAL THERMOSTATS ARE PROVIDED WHEN SPECIFIED.
3. ACTUAL NUMBER OF INTERNAL PARALLEL CIRCUITS MAY BE A MULTIPLE OF THOSE SHOWN ABOVE.
4. LEAD COLORS ARE OPTIONAL. LEADS MUST ALWAYS BE NUMBERED AS SHOWN.

CD0005

REV. DESC: REVISE TO SHOW OPTIONAL COLORS			
REV. LTR: E	BY: JLP	REVISED: 01/19/99 10:15	TDR: 0171435
S00000		FILE: AAA00005140	MDL: -
		MTL: -	

BALDOR ELECTRIC Co.

3PH, DV, 9 LEADS