

BALDOR • RELIANCE

Customer information packet

D50200P2-BV

0409AT, 200, 1750RPM, 500, 150, ,

Specifications

Enclosure	DPBV
Frame	409AT
Frame Material	Steel
Output Power	200.000 HP
Agency Approvals	CSA
Ambient Temperature	40 °C
Bearing Grease Type	Polyrex EM (-20F +300F)
Drip Cover	No Drip Cover
Feedback Device	NO FEEDBACK
Field Winding Type	STR. SHUNT
Heater Indicator	No Heater
Lifting Lugs	Standard Lifting Lugs
Motor Standards	NEMA
Mounting Arrangement	F1
Overall Length	43.88 IN
Shaft Extension Location	Pulley End
Shaft Ground Indicator	No Shaft Grounding
Shaft Slinger Indicator	No Slinger

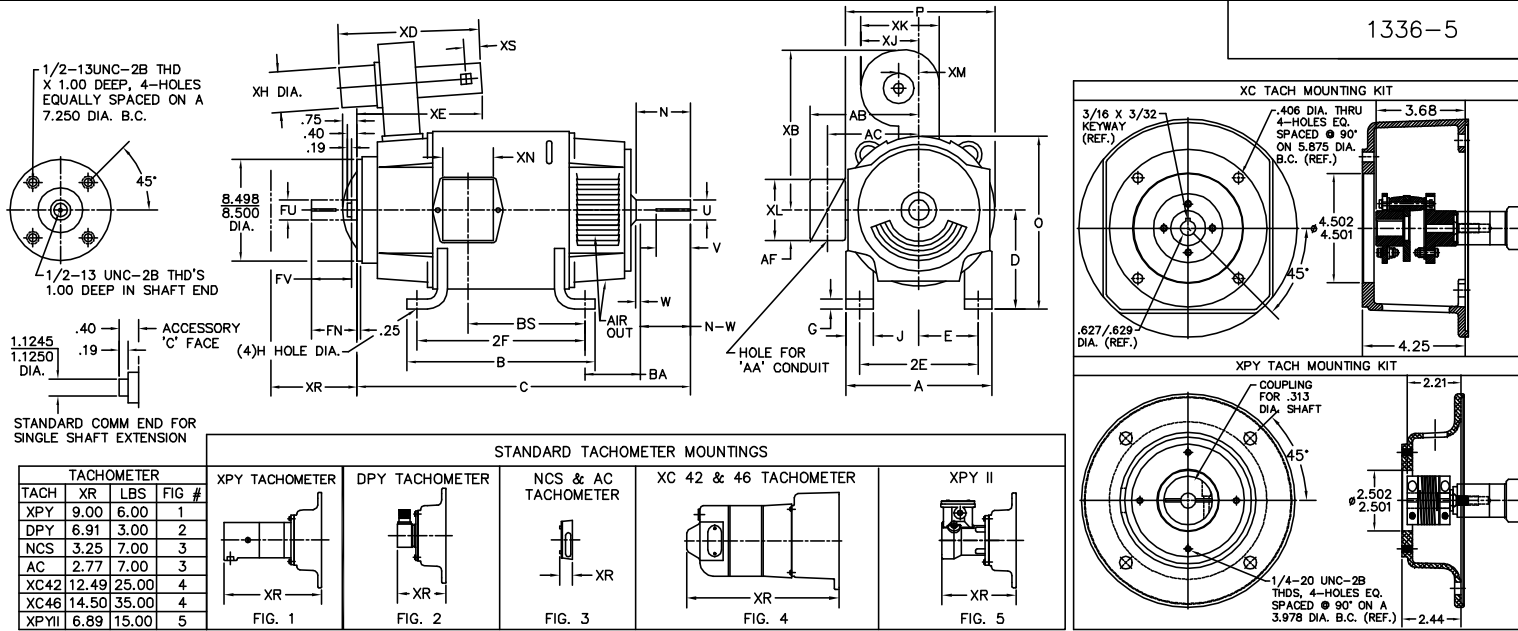
Part detail

Revision	B
Type	DC
Mech. spec.	
Base	
Status	PRD/A
Elec. spec.	K0109A A
Layout	1336-5
Eff. date	03-06-2019
CD Diagram	15209
Poles	00
Leads	
Proprietary	False
Created date	04-09-2015

Nameplate

NP1734					
CAT.NO.		MODEL	T40R8004		
HP	200	RPM	1750/1900	FRAME	0409AT
ARM V	500	ARM A	311.00	WOUND	STR. SHUNT
FLD V	150/300	FLD A	11.14-7.50/5.57-3.75		
CONN		OHMS		CL	F
ENCL	DPBV	DUTY	CONT	MX AMB	40
P CODE	C	CTSR		SER.F.	1.0
S/N		E/S	K0109A A		
	BRUSH:40019-3				
O.D.E. BRG.	6213	D.E. BRG.	6214	BRUSH	QTY

1336-5



TACHOMETER				XPY TACHOMETER	DPY TACHOMETER	NCS & AC TACHOMETER	XC 42 & 46 TACHOMETER	XPY II
TACH	XR	LBS	FIG #					
XPY	9.00	6.00	1					
DPY	6.91	3.00	2					
NCS	3.25	7.00	3					
AC	2.77	7.00	3					
XC42	12.49	25.00	4					
XC46	14.50	35.00	4					
XPYII	6.89	15.00	5					

FRAME	FOOT MOUNTING						D.E. SHAFT EXTENSION						DRIVE KEY		ACC SHAFT EXTENSION			ACC KEY		FRAME					
	BA	E	2F	G	H	J	N	N-W	U	V	W	KEY-SQ.	KEY-LONG	FN	FU	FV	KEY-SQ.	KEY-LONG	A	B	C	D	O	P	
407AT	6.63	8.00	18.00	.81	.938	4.00	5.44	5.25	2.625	5.00 ³	.19	.625	4.00	4.95	2.375	4.70	.625	3.50	20.00	20.00	39.38	10.00 ²	20.19	20.38	
L407AT	6.63	8.00	18.00	.81	.938	4.00	5.44	5.25	2.625	5.00 ³	.19	.625	4.00	4.95	2.375	4.70	.625	3.50	20.00	20.00	40.50	10.00 ²	20.19	20.38	
409AT	6.63	8.00	22.00	.81	.938	4.00	5.44	5.25	2.625	5.00 ³	.19	.625	4.00	4.95	2.375	4.70	.625	3.50	20.00	24.00	43.88	10.00 ²	20.19	20.38	
L409AT	6.63	8.00	22.00	.81	.938	4.00	5.44	5.25	2.625	5.00 ³	.19	.625	4.00	4.95	2.375	4.70	.625	3.50	20.00	24.00	45.00	10.00 ²	20.19	20.38	
L4011AT	6.63	8.00	28.00	.81	.938	4.00	5.44	5.25	2.625	5.00 ³	.19	.625	4.00	4.95	2.375	4.70	.625	3.50	20.00	30.00	52.75	10.00 ²	20.19	20.38	

FRAME	CONDUIT BOX						BLOWER										ARM APPROX. WK ² LBS.FT. ²	APPROXIMATE WEIGHT
	AA	AB	AC	AF	BS	XL	SIZE	XB	XD	XE	XH	XM	XJ	XK	XS			
407AT	3	18.28	14.45	3.34	14.50	11.63	7.76	LM6	19.63	26.38	19.05	10.25	5.69	10.95	11.50	3.75	35.47	1355 ⁵
L407AT	3	18.28	14.45	3.34	15.62	11.63	7.76	LM6	19.63	26.38	19.05	10.25	5.69	10.95	11.50	3.75	35.47	1405 ⁵
409AT	3	18.28	14.45	3.34	19.00	11.63	7.76	LM6	19.63	26.38	19.05	10.25	5.69	10.95	11.50	3.75	43.81	1651 ⁵
L409AT	3	18.28	14.45	3.34	20.12	11.63	7.76	LM6	19.63	26.38	19.05	10.25	5.69	10.95	11.50	3.75	43.81	1701 ⁵
L4011AT	4	19.28	14.63	3.50	27.70	13.40	13.50	LM9	26.02	28.31	21.20	10.75	12.49	20.93	15.25	3.75	55.64	2483 ⁵

- 1) SHAFT DIAMETERS TO 1.500 TOLERANCE +.0000 - .0005
SHAFT DIAMETERS ABOVE 1.500 TOLERANCE +.0000 - .0010
SHAFT DIAMETERS TO 1.625 RUNOUT .002 T.I.R. MAX.
SHAFT DIAMETERS ABOVE 1.625 RUNOUT .003 T.I.R. MAX.
- 2) 'D' DIMENSION TOLERANCE +.000 - .060
- 3) 'V' DIMENSION IS MAX. HUB LENGTH ON SHAFT
- 4) CONDUIT BOX CAN BE ROTATED IN 90° STEPS ON ITS OWN AXIS.
- 5) TOTAL WEIGHT OF MOTOR AND BLOWER LESS TACH WEIGHT.
- 6) ALL DIMENSIONS NOT NOTED ARE NOMINAL DIMENSIONS CONSULT FACTORY FOR TOLERANCES.

FOR F1 OR F2 CONDUIT BOX LOCATION SEE SALES ORDER

CUSTOMER IS RESPONSIBLE FOR DETERMINING THAT BALDOR'S PRODUCT WILL PERFORM SUITABLY IN THE INTENDED APPLICATION.

REV. DESC: PROVIDE "D" DIM TOL. TO ONLY THOSE OF DIM. 10.00"

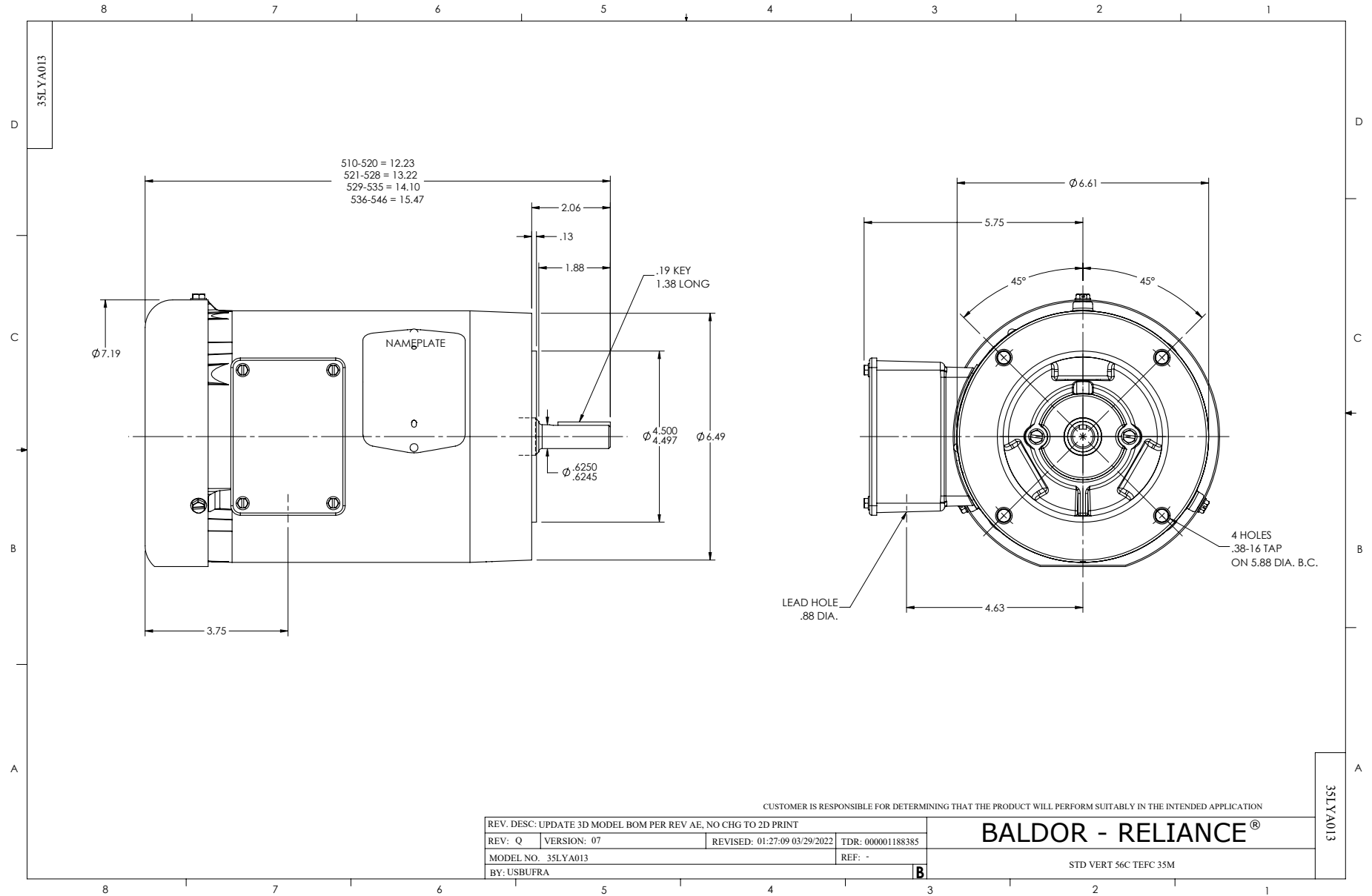
REV. LTR: G	VERSION: 01	TDR: 000000750921
FILE: \RGG\00019\442	REVISED: 09:38:49 06/11/2012	
MTL: -	BY: RGGNAS	

BALDOR

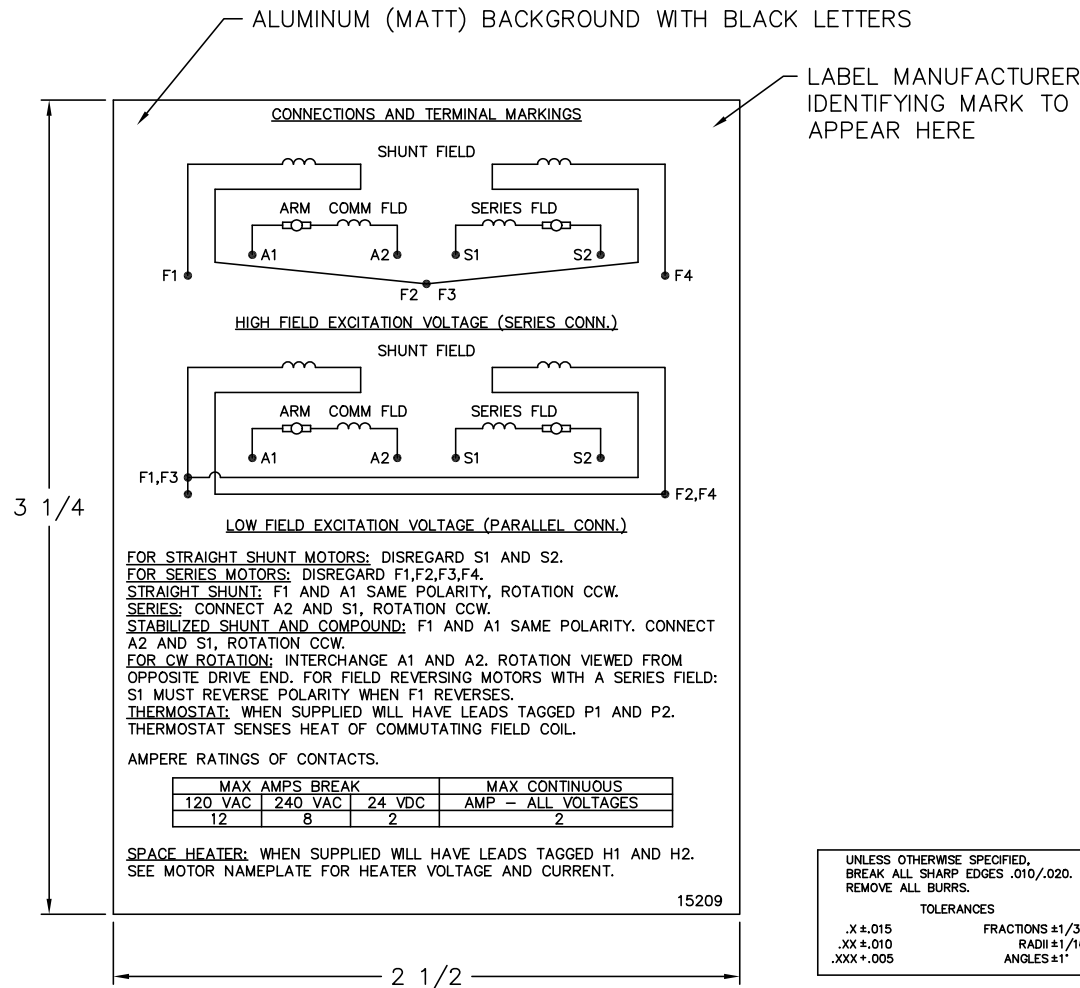
DIM SHEET: 407-L4011AT,DPBV,W/TACH

SH 1 of 1

1336-5



15209



NOTE:
 MATERIAL .005 MINIMUM FULL HARD ALUMINUM DULL FINISH.
 TEMP. RANGE -20°C TO +125°C MAXIMUM.
 FOR INDOOR AND OUTDOOR MOUNTING BACK.
 METAL, PRESSURE SENSITIVE BACK. MUST MEET CSA STANDARD.
 THE CSA IDENTIFYING MARK OF THE LABEL MANUFACTURER MUST APPEAR IN THE UPPER RIGHT HAND CORNER AS INDICATED.

MATL: NOTED	
REV: G	CHANGE ALL "NAMEPLATE" TEXT TO "LABEL"
60Z91	SCALE: - BY: BKW REVISED: 02/19/97
	FILE: CHB00002485 TDR: 0115147

BALDOR ELECTRIC Co.

LABEL, CONNECTIONS AND TERMINAL MARKINGS DC

15209