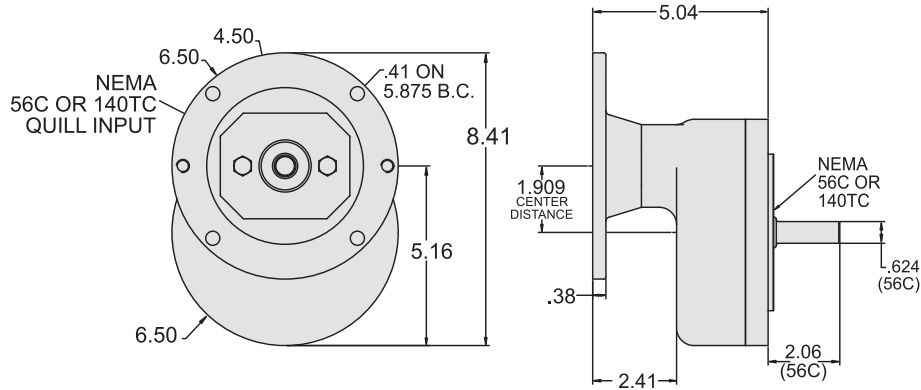




Stainless TX – Style TXMQ



Dimensions (inches)

Style	Frame Combinations (Input - Output)	AJ	AK	BD	OD	BE	BE1	BF	Input Bore	Input Keyway**	Weight (lbs)
TXMQ	56C	5.88	4.50	5.88	6.64	0.38	N/A	0.41	0.625	3/16 x 3/32	22
	140TC	5.88	4.50	5.88	6.64	0.38	N/A	0.41	0.875	3/16 x 3/32	22

**keyway width by depth

Available Selections

Exact Ratio	Motor C-Flange	Output C-Flange	Catalog Number
2.929	56C	56C	707702
	56C	140TC	707707
4.000	56C	56C	707703
	56C	140TC	707708
	140TC	56C	707713
5.111	140TC	140TC	707718
	56C	56C	707704
	56C	140TC	707709
7.461	140TC	56C	707714
	140TC	140TC	707719
	56C	56C	707705
	56C	140TC	707710
7.461	140TC	56C	707715
	140TC	140TC	707720

Single Reduction
Worm Gear Reducers

Double Reduction
Worm - Worm Gear Reducers

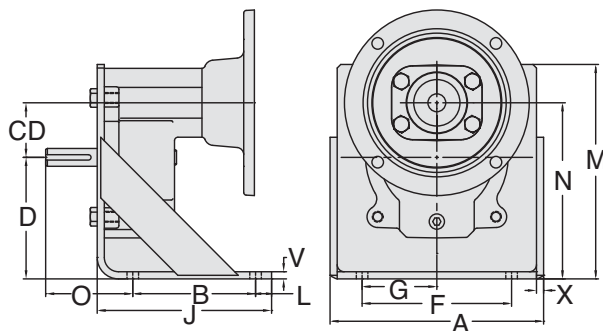
Double Reduction
Helical - Worm Gear Reducers

WASHGUARD® Reducers
and GEAR+MOTOR™

Ratio Multipliers

Accessories and
Additional Capabilities

Ratio Multiplier Foot Kit for Styles TBX, TBXM, TBXMQ



Dimensions (inches)

Size	Output	A	B	CD	D	F	G	H	J	X	L	M	N	O	V	X	Catalog Number	Weight (lbs)
TX	56C	7.50	4.31	1.909	4.250	5.25	2.63	0.41	6.13	0.25	0.56	7.50	6.16	3.06	.25	.25	G185655	2.0
	140TC	7.50	4.31	1.909	4.250	5.25	2.63	0.41	6.13	0.25	0.56	7.50	6.16	3.12	.25	.25		
TX3	180TC	9.50	5.25	2.874	5.000	7.00	3.50	0.53	7.38	0.25	0.63	9.44	7.88	3.88	.25	.25	G185657	3.0
	210TC	9.50	5.25	2.874	5.000	7.00	3.50	0.53	7.38	0.25	0.63	9.44	7.88	4.38	.25	.25		
	250TC	9.50	5.25	2.874	5.000	7.00	3.50	0.53	7.38	0.25	0.63	9.44	7.88	5.00	.25	.25		

NOTE: Foot kit is painted steel construction.

Maximum Rating Tables

Stainless TX

Exact Ratio	Input RPM	Output RPM	Input HP	Output HP	Output TQ. (lb-in.)	Overhung Load (lbs.)
2.056	1750	851	4.69	4.55	347	222
2.929	1750	598	3.64	3.53	384	265
4.000	1750	438	2.91	2.82	419	300
5.111	1750	342	2.33	2.26	428	300
7.462	1750	235	1.56	1.52	419	300

TX

Exact Ratio	Input RPM	Output RPM	Input HP	Output HP	Output TQ. (lb-in.)	Overhung Load 56C Output (lbs.)	Overhung Load 140TC Output (lbs.)
2.000	1750	875	6.00	5.88	424	358	358
2.913	1750	601	4.21	4.13	433	375	434
4.000	1750	438	3.63	3.55	511	375	455
5.000	1750	350	3.00	2.94	529	375	455
7.182	1750	244	2.62	2.57	664	375	455

TX3

Exact Ratio	Input RPM	Output RPM	Input HP	Output HP	Output TQ. (lb-in.)	Overhung Load (lbs.)
2.000	1750	875	20.00	19.6	1412	900
2.964	1750	590	12.98	12.72	1357	900
4.045	1750	433	11.35	11.13	1621	900
5.167	1750	339	10.07	9.87	1836	900
7.538	1750	232	5.80	5.69	1544	900