

BALDOR® • RELIANCE™

Customer information packet

40G056X775G1

15HP, 1180RPM, 3PH, 60HZ, 284JP, 4038M, OPSB, F

Specifications

Enclosure	OPSB
Frame	284JP
Frame Material	Steel
Frequency	60.00 Hz
Motor Letter Type	Three Phase
Output @ Frequency	15.000 HP @ 60 HZ
Phase	3
Synchronous Speed @ Frequency	1200 RPM @ 60 HZ
Voltage @ Frequency	230.0 V @ 60 HZ 460.0 V @ 60 HZ
Agency Approvals	CSA CSA EEV UR
Ambient Temperature	40 °C
Auxillary Box	No Auxillary Box
Auxillary Box Lead Termination	None
Base Indicator	Rigid
Bearing Grease Type	Polyrex EM (-20F +300F)
Blower	None
Current @ Voltage	41.000 A @ 230.0 V 42.000 A @ 208.0 V 20.500 A @ 460.0 V
Design Code	B
Drip Cover	No Drip Cover
Duty Rating	CONT
Efficiency @ 100% Load	91.7 %
Electrically Isolated Bearing	Not Electrically Isolated
Feedback Device	NO FEEDBACK
Front Face Code	Standard
Front Shaft Indicator	None
Heater Indicator	No Heater
High Voltage Full Load Amps	20.5 a

Part detail

Revision	N
Type	AC
Mech. spec.	40G56
Base	
Status	PRD/A
Elec. spec.	40WGX775
Layout	40LYG056
Eff. date	01-31-2025
CD Diagram	CD0005
Poles	06
Leads	9#10
Proprietary	False
Created date	10-19-2015

Insulation Class	F
Inverter Code	Inverter Ready
KVA Code	G
Lifting Lugs	Standard Lifting Lugs
Locked Bearing Indicator	Locked Bearing
Motor Lead Exit	Ko Box
Motor Lead Quantity/Wire Size	9 @ 10 AWG
Motor Lead Termination	Flying Leads
Motor Standards	NEMA
Motor Type	4038M
Mounting Arrangement	F1
Number of Poles	6
Overall Length	27.57 IN
Power Factor	75
Product Family	General Purpose
Pulley End Bearing Type	Ball
Pulley Face Code	C-Face
Pulley Shaft Indicator	Tapped & Key
Rodent Screen	Included
Service Factor	1.15
Shaft Diameter	1.750 IN
Shaft Extension Location	Pulley End
Shaft Ground Indicator	No Shaft Grounding
Shaft Rotation	Reversible
Shaft Slinger Indicator	Shaft Slinger
Speed	1180 rpm
Speed Code	Single Speed
Starting Method	Direct on line
Thermal Device - Bearing	None
Thermal Device - Winding	None
Vibration Sensor Indicator	No Vibration Sensor
Winding Thermal 1	None
Winding Thermal 2	None

Nameplate

NP2138L

CAT.NO.		P/N		ENCLOSURE	OPSB				
SPEC.	40G056X775G1	CC	010A	FRAME	284JP	S/N			
HP	15	CLASS	F	HZ	60				
RPM	1180	PH	3	DES	B				
VOLT	230/460			KVA-CODE	G	ODE BRG	6309	DE BRG	6312
AMP	41/20.5								
RATING	40C AMB-CONT	GREASE	POLYREX EM						
NEMA-NOM-EFF	91.7	PF	75	SER.F.	1.15				
HTR-VOLTS		HTR-AMPS							

AC Induction Motor Performance Data

Record # 30818

Typical performance - not guaranteed values

Winding: 40WGX775-R001		Type: 4038M		Enclosure: OPSB	
Nameplate Data			460 V, 60 Hz: High Voltage Connection		
Rated Output (HP)	15	Full Load Torque	66.8 LB-FT		
Volts	230/460	Start Configuration	direct on line		
Full Load Amps	41/20.5	Breakdown Torque	185 LB-FT		
R.P.M.	1180	Pull-up Torque	87.7 LB-FT		
Hz	60 Phase	3	Locked-rotor Torque	105 LB-FT	
NEMA Design Code	B KVA Code	G	Starting Current	116 A	
Service Factor (S.F.)	1.15	No-load Current	10.1 A		
NEMA Nom. Eff.	91.7	Power Factor	75	Line-line Res. @ 25°C	0.67748 Ω
Rating - Duty	40C AMB-CONT	Temp. Rise @ Rated Load	26°C		
S.F. Amps		Temp. Rise @ S.F. Load	31°C		
		Locked-rotor Power Factor	34		
		Rotor inertia	4.65 LB-FT ²		

Load Characteristics 460 V, 60 Hz, 15 HP

% of Rated Load	25	50	75	100	125	150	S.F.
Power Factor	37	58	69	75	78	79	77
Efficiency	85.5	90.7	91.8	91.8	91.2	89.9	91.4
Speed	1195.6	1191.7	1187.6	1182.8	1177.5	1169.8	1180
Line amperes	11.1	13.4	16.6	20.4	24.8	30.7	23

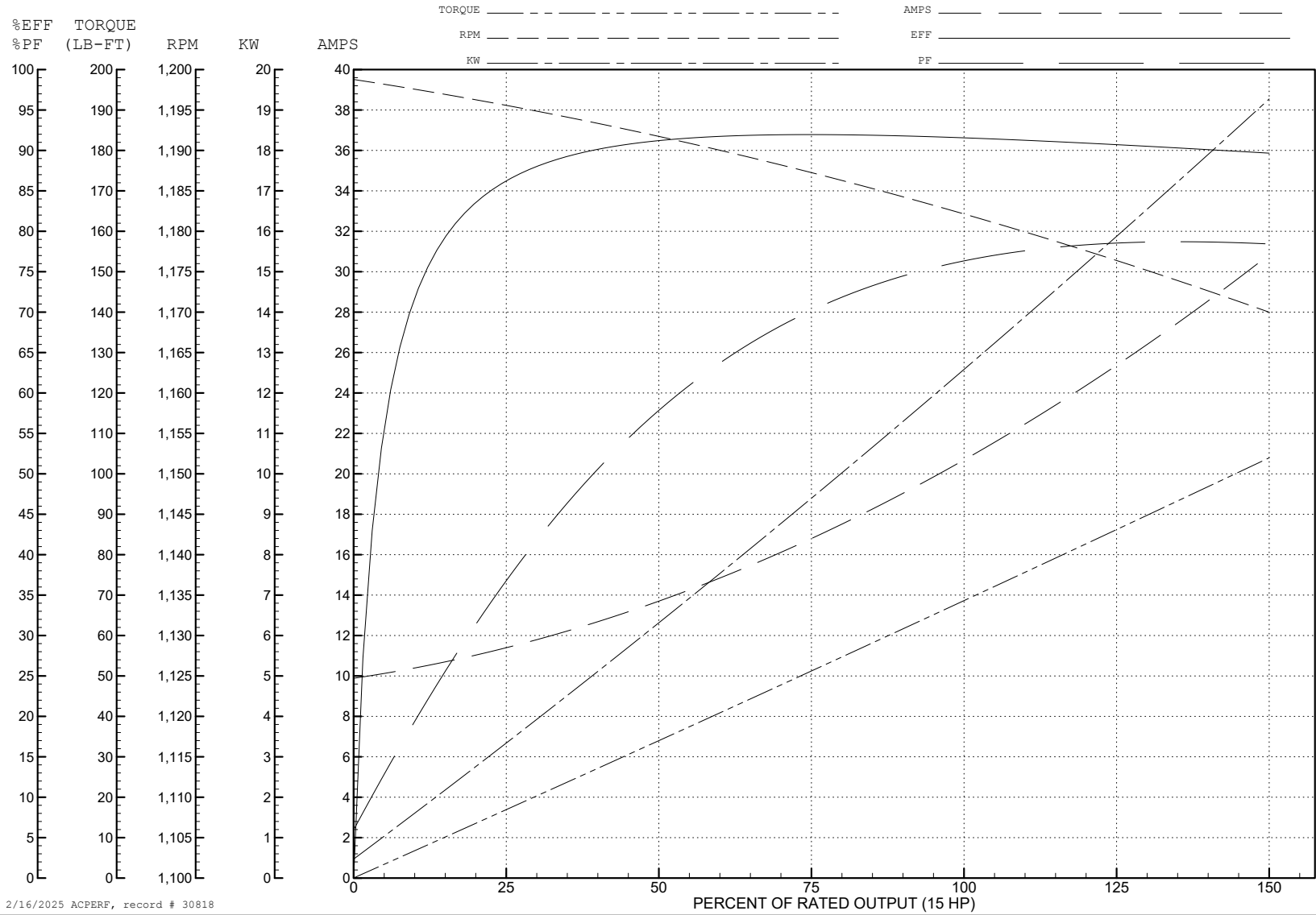
ABB Motors and Mechanical Inc.

WINDING # 40WGx775

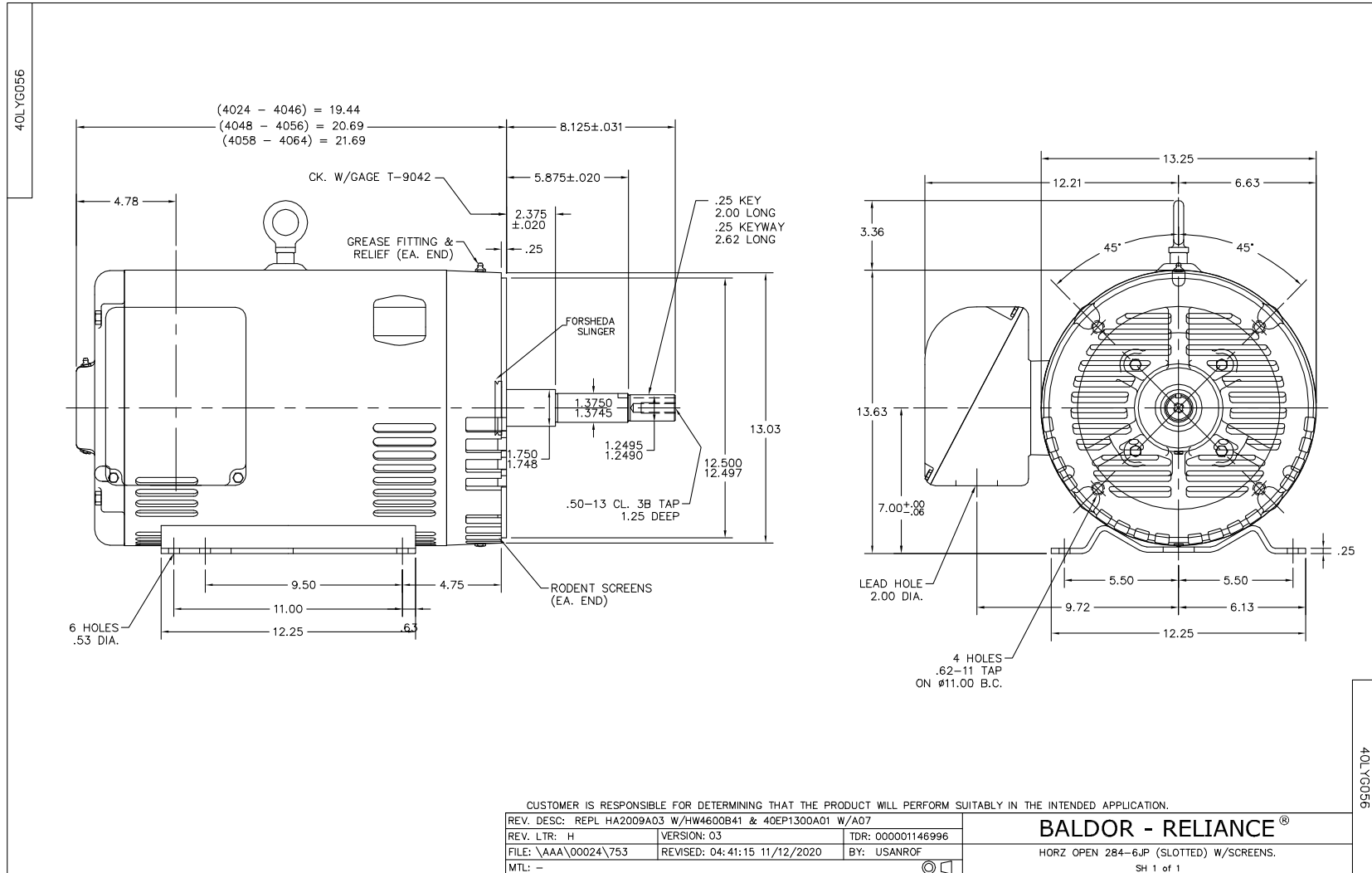
15 HP 3 PH 60 HZ 1180 RPM 460 V 4038M

Typical performance - not guaranteed values.

TORQUES (LB-FT): PO=185 PU=87.7 LR=105 LRA=116



2/16/2025 ACPERF, record # 30818



CD0005



LOW VOLTAGE
(2Y)



LINE

HIGH VOLTAGE
(1Y)



LINE

NOTES:

1. INTERCHANGE ANY TWO LINE LEADS TO REVERSE ROTATION.
2. OPTIONAL THERMOSTATS ARE PROVIDED WHEN SPECIFIED.
3. ACTUAL NUMBER OF INTERNAL PARALLEL CIRCUITS MAY BE A MULTIPLE OF THOSE SHOWN ABOVE.
4. LEAD COLORS ARE OPTIONAL. LEADS MUST ALWAYS BE NUMBERED AS SHOWN.

CD0005

REV. DESC: REVISE TO SHOW OPTIONAL COLORS			
REV. LTR: E	BY: JLP	REVISED: 01/19/99 10:15	TDR: 0171435
S00000		FILE: AAA00005140	MDL: -
		MTL: -	

BALDOR ELECTRIC Co.

3PH, DV, 9 LEADS