


The Timken Company

4500 Mt Pleasant St. NW

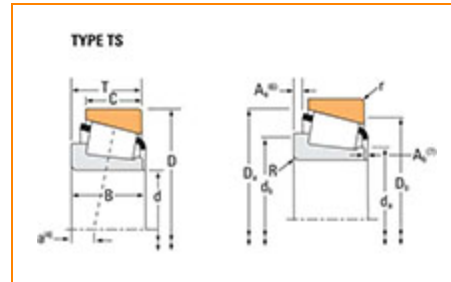
N. Canton, OH 44720

Phone: (234) 262-3000

E-Mail: CustomerCAD@timken.com • **Web site:** www.timken.com

Part Number 354A, Tapered Roller Bearings - Single Cups - Imperial

This is the most basic and most widely used type of tapered roller bearing. It consists of two main separable parts: the cone (inner ring) assembly and the cup (outer ring). It is typically mounted in opposing pairs on a shaft.



[Specifications](#) | [Dimensions](#) | [Abutment and Fillet Dimensions](#) | [Factors](#)

Specifications

Series	355
Cup Part Number	354A
Design Units	Imperial

Dimensions

D - Cup Outer Diameter	3.3465 in 85.001 mm
C - Cup Width	0.6875 in 17.463 mm



Abutment and Fillet Dimensions

r - Cup Backface "To Clear" Radius¹	0.050 in 1.27 mm
Da - Cup Frontface Backing Diameter	3.18 in 80.77 mm
Db - Cup Backface Backing Diameter	3.03 in 76.96 mm

Factors

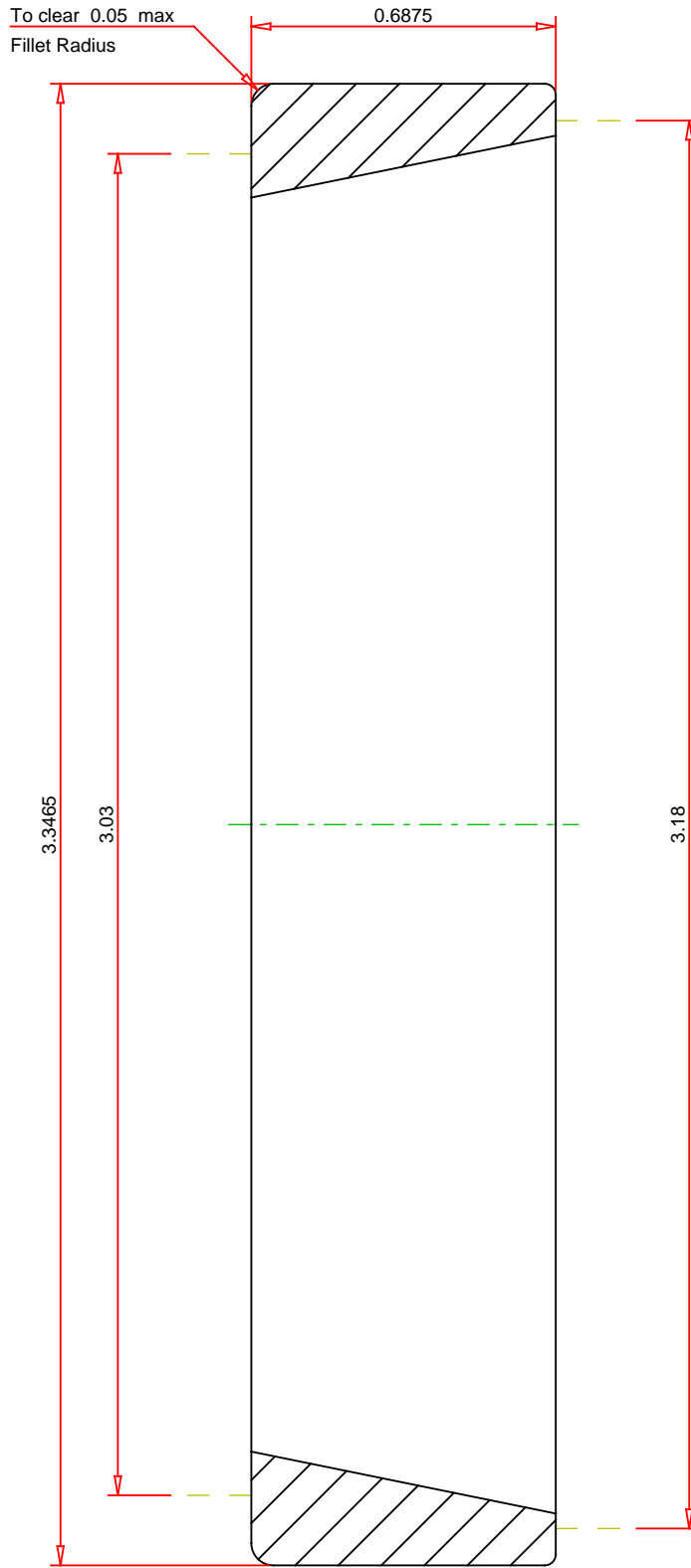
e - ISO Factor²	0.31
Y - ISO Factor³	1.96
Cg - Geometry Factor⁴	0.0732

¹ These maximum fillet radii will be cleared by the bearing corners.

² These factors apply for both inch and metric calculations. Consult your Timken representative for instruction on use.

³ These factors apply for both inch and metric calculations. Consult your Timken representative for instruction on use.

⁴ Geometry constant for Lubrication Life Adjustment Factor a3l.



IMPERIAL UNITS

TIMKEN®

THE TIMKEN COMPANY
NORTH CANTON, OHIO USA

354A
Tapered Roller Bearings - Single Cups - Imperial