

BALDOR • RELIANCE

Customer information packet

VXM14142T

1//.75HP, 1770//1475RPM, 3PH, 60//50HZ, 143T

Class - CLI GP D; CLII GP F,G

Division - Division I

Specifications

Enclosure	XPFC
Frame	143TC
Frame Material	Steel
Frequency	50.00 Hz 60.00 Hz
Haz Area Class and Group	CLI GP D; CLII GP F,G
Haz Area Division	Division I
Motor Letter Type	Three Phase
Output @ Frequency	.750 HP @ 50 HZ 1.000 HP @ 60 HZ
Phase	3
Synchronous Speed @ Frequency	1800 RPM @ 60 HZ
Voltage @ Frequency	230.0 V @ 60 HZ 190.0 V @ 50 HZ 460.0 V @ 60 HZ 380.0 V @ 50 HZ
Agency Approvals	CSA EEV UL
Ambient Temperature	40 °C
Auxillary Box	No Auxillary Box
Auxillary Box Lead Termination	None
Base Indicator	No Mounting
Bearing Grease Type	Polyrex EM (-20F +300F)
Blower	None
Constant Torque Speed Range	6
Current @ Voltage	3.200 A @ 208.0 V 3.200 A @ 230.0 V 3.080 A @ 190.0 V 1.600 A @ 460.0 V 1.540 A @ 380.0 V
Design Code	B
Drip Cover	No Drip Cover

Part detail

Revision	B
Type	AC
Mech. spec.	
Base	
Status	PRD/A
Elec. spec.	35WGG004
Layout	35LYE380
Eff. date	01-10-2023
CD Diagram	CD0005
Poles	04
Leads	9#18
Proprietary	False
Created date	10-28-2021

Duty Rating	CONT
Efficiency @ 100% Load	85.5 %
Electrically Isolated Bearing	Not Electrically Isolated
Feedback Device	NO FEEDBACK
Haz Area Temp Code	T3C
Heater Indicator	No Heater
High Voltage Full Load Amps	1.5 a
Insulation Class	B
Inverter Code	Inverter Ready
KVA Code	N
Lifting Lugs	No Lifting Lugs
Locked Bearing Indicator	Locked Bearing
Max Speed	2700 rpm
Motor Lead Termination	Flying Leads
Motor Standards	NEMA
Motor Type	3520M
Mounting Arrangement	F1
Number of Poles	4
Overall Length	14.33 IN
Power Factor	69
Product Family	General Purpose
Pulley Face Code	C-Face
Rodent Screen	None
Service Factor	1.00
Shaft Diameter	0.875 IN
Shaft Ground Indicator	No Shaft Grounding
Shaft Rotation	Reversible
Speed	1770 rpm
Speed Code	Single Speed
Starting Method	Direct on line
Thermal Device - Bearing	None
Thermal Device - Winding	Normally Closed Thermostat
Vibration Sensor Indicator	No Vibration Sensor
Winding Thermal 1	None

Winding Thermal 2

None

Nameplate

NP0887XPSLEV

NO.		CC	010A		
S/N		TEMP CODE	T3C		
SPEC.	35-0000-1365	INV.TYPE	PWM		
CAT.NO.	VXM14142T	C HP FR	60	C HP TO	90
HP	1//.75	CT HZ FROM	6	CT HZ TO	60
VOLTS	230/460//190/380	VT HZ FROM	6	VT HZ TO	60
AMPS	3.2/1.6//3.08/1.54	MAG CUR	2.2/1.1		
RPM	1770//1475	MX RPM	2700		
HZ	60//50	PH	3	CL	F
		NOM.EFF.	85.5		
SER.F.	1.00	DES	B	SL HZ	1
		WK2	0.144		
FRAME	143TC	RATING	40C AMB-CONT		

AC Induction Motor Performance Data

Record # 86931

Typical performance - not guaranteed values

Winding: 35WGG004-R010		Type: 3520M		Enclosure: XPFC		
Nameplate Data			460 V, 60 Hz: High Voltage Connection			
Rated Output (HP)	1//.75		Full Load Torque	2.97 LB-FT		
Volts	230/460//190/380		Start Configuration	direct on line		
Full Load Amps	3.26/1.63//3.08/1.54		Breakdown Torque	13.68 LB-FT		
R.P.M.	1760//1475		Pull-up Torque	7.85 LB-FT		
Hz	60//50	Phase	3	Locked-rotor Torque	9.01 LB-FT	
NEMA Design Code	B		KVA Code	N	Starting Current	14.13 A
Service Factor (S.F.)	1			No-load Current	1.08 A	
NEMA Nom. Eff.	85.5	Power Factor	67	Line-line Res. @ 25°C	16.9 Ω	
Rating - Duty	40C AMB-CONT			Temp. Rise @ Rated Load	24°C	
				Locked-rotor Power Factor	61.5	
				Rotor inertia	0.144 lb-ft ²	

Load Characteristics 460 V, 60 Hz, 1 HP

% of Rated Load	25	50	75	100	125	150
Power Factor	30	47	60	69	76	79
Efficiency	72.1	81.7	84.7	85.7	85.5	84.7
Speed	1791	1784	1776	1768	1759	1750
Line amperes	1.11	1.22	1.38	1.59	1.82	2.09

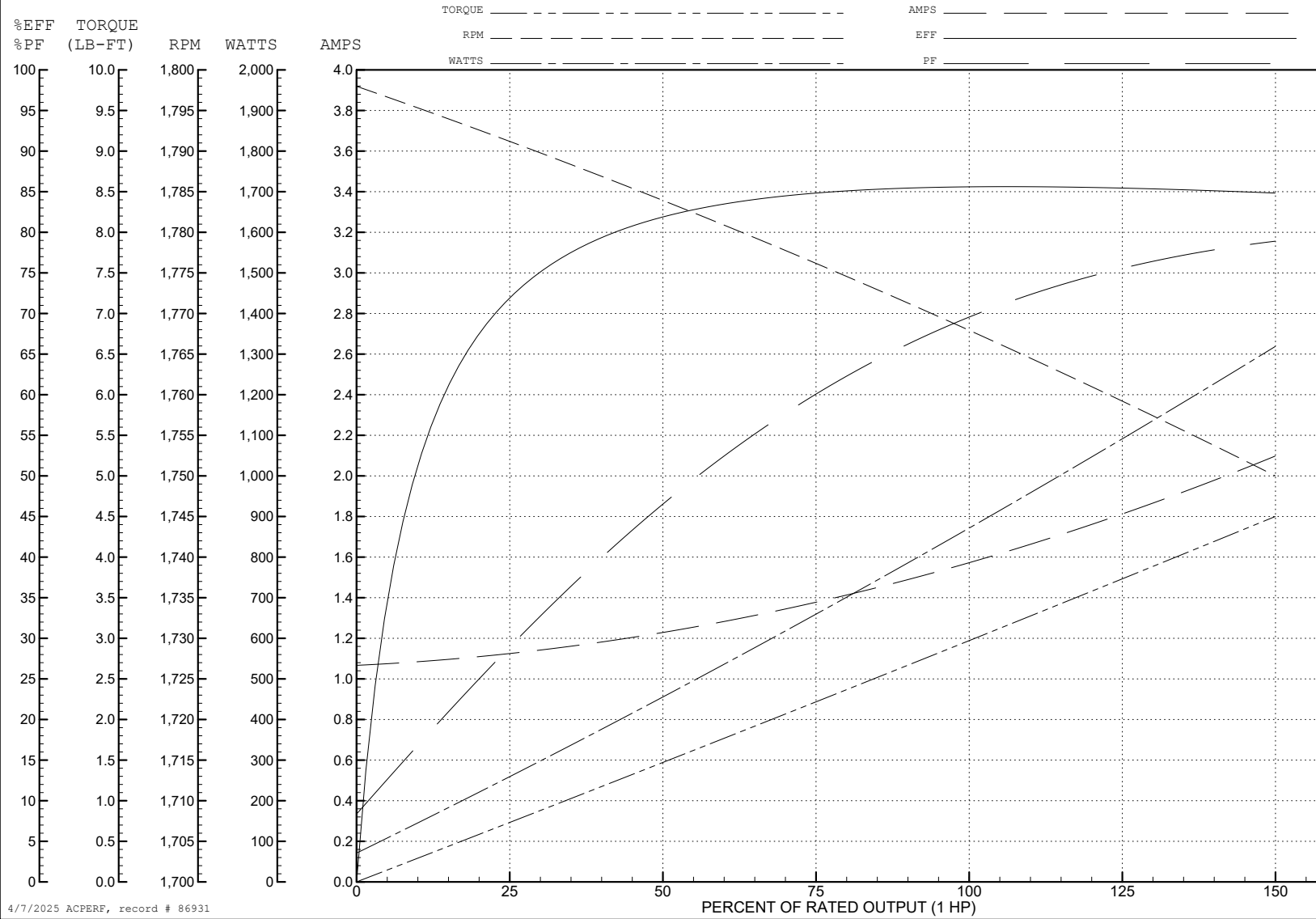
ABB Motors and Mechanical Inc.

WINDING # 35WGG004

Typical performance - not guaranteed values.

1 HP 3 PH 60 HZ 1768 RPM 460 V 3520M

TORQUES (LB-FT): PO=13.68 PU=7.85 LR=9.01 LRA=14.13



4/7/2025 ACPERF, record # 86931

AC Induction Motor Performance Data

Record # 86932

Typical performance - not guaranteed values

Winding: 35WGG004-R010		Type: 3520M	Enclosure: XPFC	
Nameplate Data			380 V, 50 Hz: High Voltage Connection	
Rated Output (HP)	1//.75		Full Load Torque	2.68 LB-FT
Volts	230/460//190/380		Start Configuration	direct on line
Full Load Amps	3.26/1.63//3.08/1.54		Breakdown Torque	12.31 LB-FT
R.P.M.	1760//1475		Pull-up Torque	7.45 LB-FT
Hz	60//50	Phase 3	Locked-rotor Torque	8.55 LB-FT
NEMA Design Code	B	KVA Code N	Starting Current	13.12 A
Service Factor (S.F.)	1		No-load Current	1.06 A
NEMA Nom. Eff.	85.5	Power Factor 67	Line-line Res. @ 25°C	16.9 Ω
Rating - Duty	40C AMB-CONT		Temp. Rise @ Rated Load	22°C
			Locked-rotor Power Factor	67.1
			Rotor inertia	0.144 lb-ft ²

Load Characteristics 380 V, 50 Hz, 0.75 HP

% of Rated Load	25	50	75	100	125	150
Power Factor	29	46	58	67	74	79
Efficiency	68.3	79	82.7	84	83.7	83.2
Speed	1492	1486	1479	1471	1463	1455
Line amperes	1.08	1.18	1.32	1.5	1.71	1.95

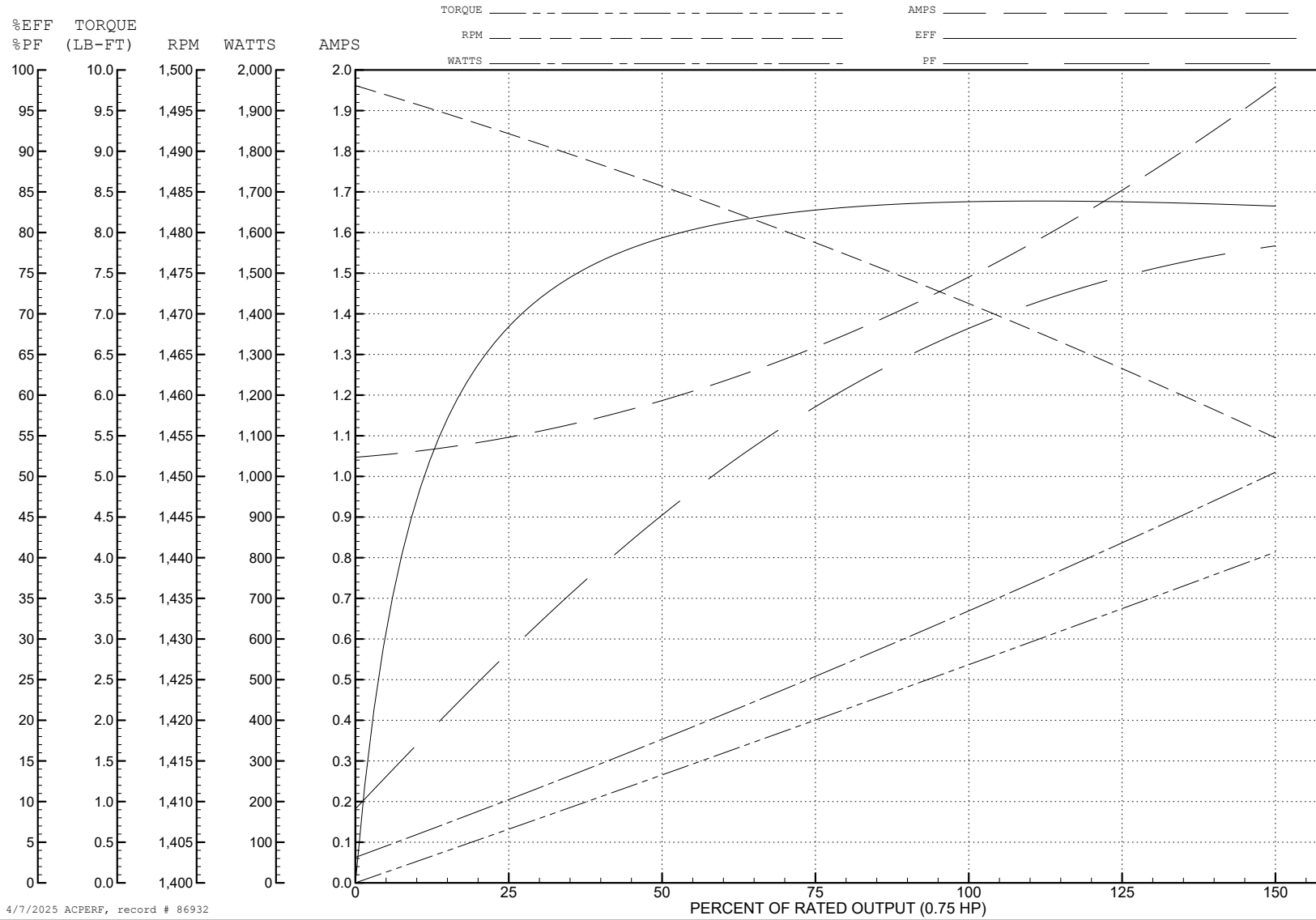
ABB Motors and Mechanical Inc.

WINDING # 35WGG004

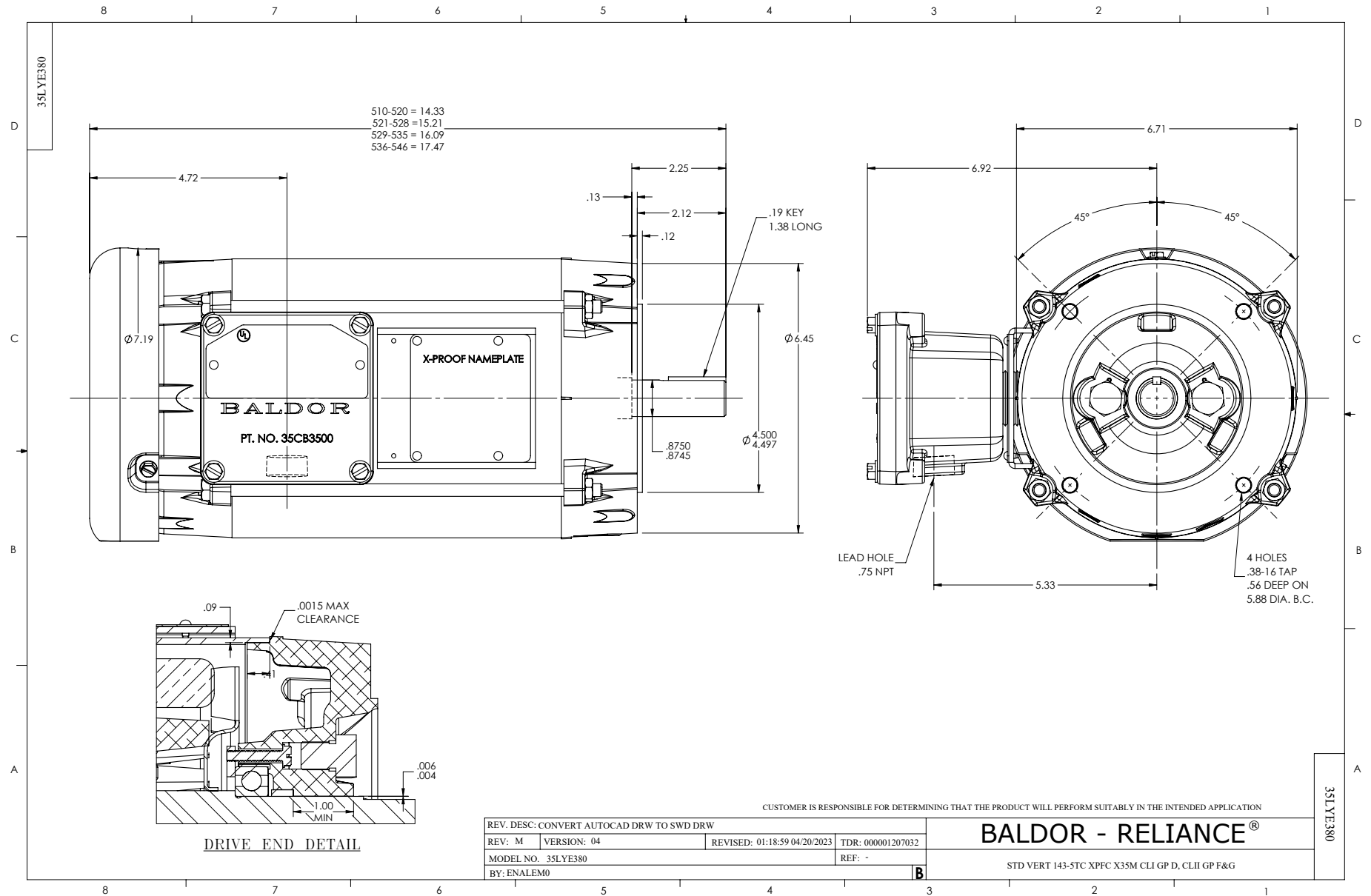
Typical performance - not guaranteed values.

0.75 HP 3 PH 50 HZ 1471 RPM 380 V 3520M

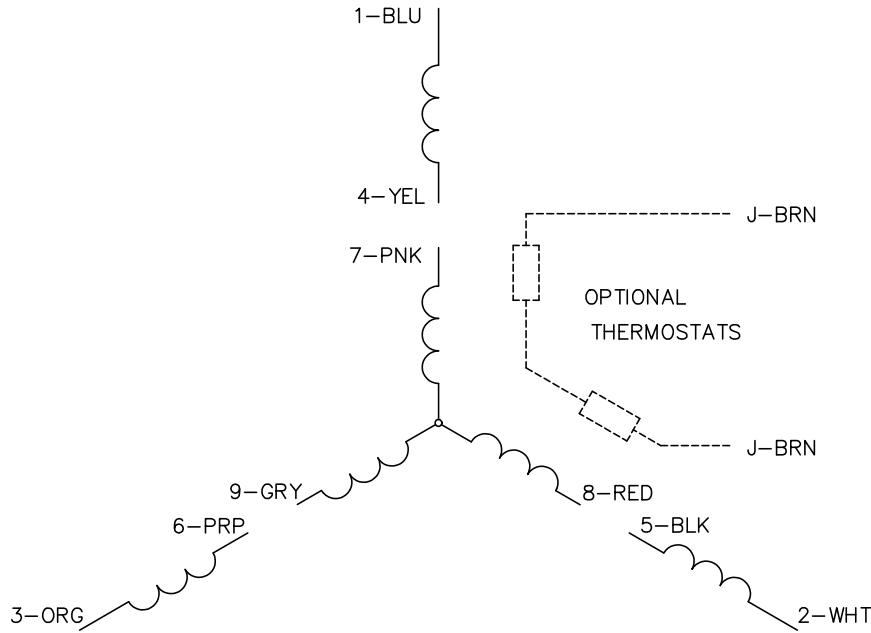
TORQUES (LB-FT): PO=12.31 PU=7.45 LR=8.55 LRA=13.12



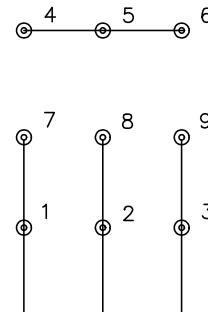
4/7/2025 ACPERF, record # 86932



CD0005

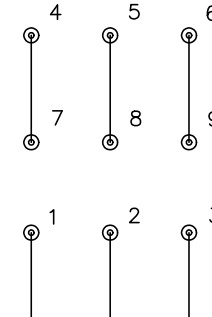


LOW VOLTAGE
(2Y)



LINE

HIGH VOLTAGE
(1Y)



LINE

NOTES:

1. INTERCHANGE ANY TWO LINE LEADS TO REVERSE ROTATION.
2. OPTIONAL THERMOSTATS ARE PROVIDED WHEN SPECIFIED.
3. ACTUAL NUMBER OF INTERNAL PARALLEL CIRCUITS MAY BE A MULTIPLE OF THOSE SHOWN ABOVE.
4. LEAD COLORS ARE OPTIONAL. LEADS MUST ALWAYS BE NUMBERED AS SHOWN.

CD0005

REV. DESC: REVISE TO SHOW OPTIONAL COLORS			
REV. LTR: E	BY: JLP	REVISED: 01/19/99 10:15	TDR: 0171435
S00000		FILE: AAA00005140	MDL: -
		MTL: -	

BALDOR ELECTRIC Co.

3PH, DV, 9 LEADS