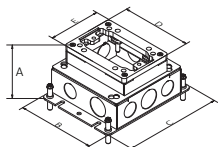



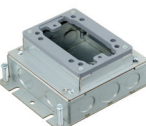




Flush Rectangular Stamped Steel Floor Boxes with Non-Metallic Covers, for Use In Concrete Floors

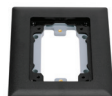
| Style | Stamped Steel | | | | | |
|-----------------------------------------------------------------------------------|-----------------------------------------------------------------------------------|-----------------------------------------------------------------------------------|-----------------------------------------------------------------------------------|------------------------------------------------------------------------------------|-------------------------------------------------------------------------------------|-------------------------------------------------------------------------------------|
| | 1-Gang Deep | 2-Gang Deep | 3-Gang Deep | 1-Gang Shallow | 2-Gang Shallow | 3-Gang Shallow |
|  |  |  |  |  |  |  |
| Catalog Numbers | FB2431* | FB2432 | FB2433 | FB2421* | FB2422 | FB2423 |
| Cover Frame Material | Thermoplastic | Thermoplastic | Thermoplastic | Thermoplastic | Thermoplastic | Thermoplastic |
| Min. Depth of Pour | 3.75" (95.3) | 3.75" (95.3) | 3.75" (95.3) | 2.75" (69.9) | 2.75" (69.9) | 2.75" (69.9) |
| Adjustability | Fully | Fully | Fully | Fully | Fully | Fully |
| Before Pour External Height Adjustment | 1.25" (31.8) | 1.25" (31.8) | 1.25" (31.8) | 1.25" (31.8) | 1.25" (31.8) | 1.25" (31.8) |
| After Pour Internal Height Adjustment | .50" (12.7) | .50" (12.7) | .50" (12.7) | .50" (12.7) | .50" (12.7) | .50" (12.7) |
| Cubic Inch (cm3) Capacity per Gang | 54.0 (884.9) | 52.8 (865.2) | 50.8 (832.5) | 37.3 (611.2) | 35.0 (573.5) | 34.0 (557.2); 35.0 (573.5) center gang |
| Dimensions – A | 3.73" (94.7) | 3.73" (94.7) | 3.73" (94.7) | 2.75" (69.8) | 2.75" (69.8) | 2.75" (69.8) |
| Dimensions – B | 4.81" (122.2) | 4.81" (122.2) | 4.81" (122.2) | 4.81" (122.2) | 4.81" (122.2) | 4.81" (122.2) |
| Dimensions – C | 6.00" (152.4) | 9.25" (235.0) | 12.50" (317.5) | 6.00" (152.4) | 9.25" (235.0) | 12.50" (317.5) |
| Dimensions – D | 4.32" (109.7) | 4.32" (109.7) | 4.32" (109.7) | 4.32" (109.7) | 4.32" (109.7) | 4.32" (109.7) |
| Dimensions – E | 3.20" (81.3) | 6.42" (163.0) | 9.64" (244.8) | 3.20" (81.3) | 6.42" (163.0) | 9.64" (244.8) |
| Knockouts – Sides | (2) 3/4", 1", 1-1/4" | (4) 3/4", 1", 1-1/4" | (6) 3/4", 1", 1-1/4" | (1) 1/2" & (1) 3/4" | (8) 1/2", 3/4" | (12) 1/2", 3/4" |
| Knockouts – Ends | (2) 3/4", 1", 1-1/4" | (2) 3/4", 1", 1-1/4" | (2) 3/4", 1", 1-1/4" | (2) 1/2" & (1) 3/4" | (4) 1/2", 3/4" | (4) 1/2", 3/4" |
| Knockouts – Bottom | (2) 3/4", 1", 1-1/4" | (4) 3/4", 1", 1-1/4" | (6) 3/4", 1", 1-1/4" | (2) 3/4", 1", 1-1/4" | (4) 3/4", 1", 1-1/4" | (6) 3/4", 1", 1-1/4" |
| Concrete Cover Included | ✓ | ✓ | ✓ | ✓ | ✓ | ✓ |
| Low Voltage Barrier | – | (1) Removable | (2) Removable | – | (1) Removable | (2) Removable |

Note: UL File Number E92074. CSA File Number LR18416.

*Suitable for single service applications only.

Flush Rectangular Non-Metallic Covers and Flanges*

| Required Components for Carpet Applications | | | | Cover with Duplex and Style Line® decorator inserts included |
|---------------------------------------------|-----------------|-----------------|-----------------|--------------------------------------------------------------|
| Carpet Flanges | | | | |
| Number of Gangs | 1-Gang | 2-Gang | 3-Gang | One Required per Gang 4.15" x 2.97" |
| Dimensions | 6.00" x 4.88" | 6.00" x 8.13" | 6.00" x 11.35" | |
| Black | MFBRFBL1 | MFBRFBL2 | MFBRFBL3 | PFBR826BLA |
| Brown | MFBRFBR1 | MFBRFBR2 | MFBRFBR3 | PFBR826BRA |
| Gray | MFBRFGY1 | MFBRFGY2 | MFBRFGY3 | PFBR826GYA |
| Ivory | MFBRFI1 | MFBRFI2 | MFBRFI3 | PFBR826IA |



Cover



Duplex Insert



Style Line®
Decorator Insert

Note: *Flush rectangular non-metallic covers and flanges are UL listed only. Not CSA certified. COVER LOAD RATING; Non-metallic covers and flanges 300 lbs. Load applied through a 3 in. (.76) mandrel at the center of the cover.

Dimensions in Inches (mm)