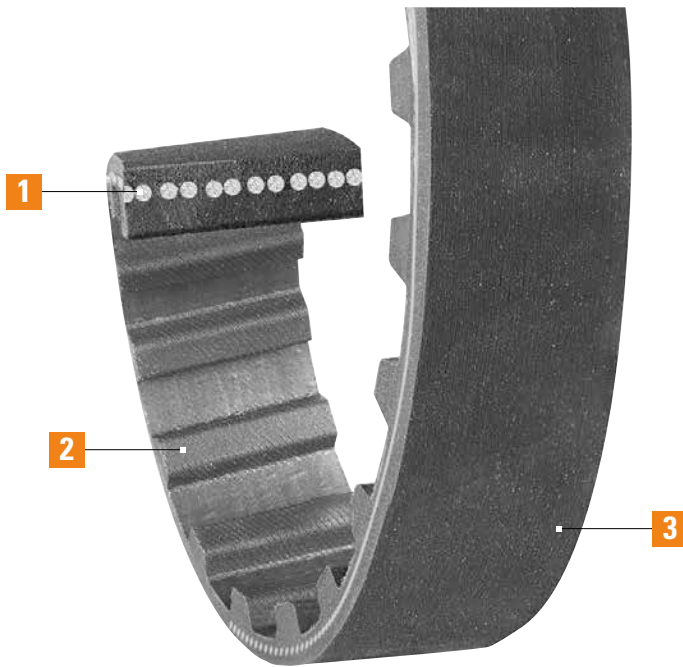


Cotton Drive® Timing Belts

Synchronous Drive Belt



- 1 Ultra-Cord®**
Delivers unequalled strength and dimensional stability
- 2 Tooth Cover**
Superior resistance to heat, ozone, grease, oil and friction wear
- 3 Rubber Compound**
Formulated for increased resistance to tooth shear and jump resulting in increased belt life

Ultra-Cord® tensile member

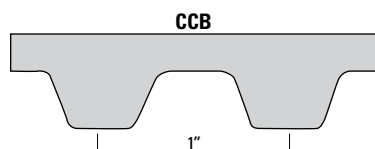
Custom designed for exact OEM replacement on cotton gin drives

Innovative engineering incorporates Ultra-Cord technology to provide the strength and length stability of steel cord, and offers improved life and performance over aramid fiber cords.



Cotton Drive® Timing Belts & Sprockets

Synchronous Drive System



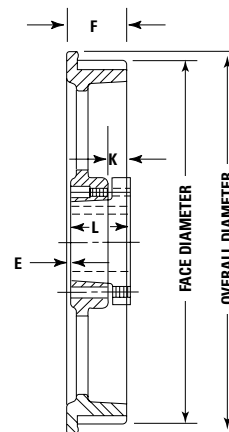
Part Number Example: **61CCB142** = **61** **CCB** **142**
 Pitch Length (inches) Cotton Cleaner Belt (1" tooth pitch) Drive Center Distance (inches)

Cotton Drive® belts are special 1" pitch timing belts designed for use on cotton gin machines. Uniquely constructed to handle this harsh, abrasive application.

Cotton Drive® Belt Part Numbers

Part Number	Pitch Length (in)	Top Width	Number of Teeth	Weight (lbs)
61CCB142	61.07	1.5	60	2.00
63CCB165	63.00	1.5	63	2.10
63CCB165-2-1/2*	63.00	2.5	63	3.50
64CCB170	63.95	1.5	64	2.20
65CCB175	64.95	1.5	65	2.30

*Non-stock item. Minimum order quantity and/or extended lead times may apply. Contact customer service for availability.



Cotton Drive® Sprocket Part Numbers

Part Number	Number Of Grooves	Face Diameter		Overall Diameter	Type	Bushing	E	F	K	L	Weight (lbs)
21CCP	21	1.5	60	7-3/16	bushed	SK	1-1/16"	1-15/16"	5/8"	1-7/8"	11.5
30CCP	30	1.5	63	10	bushed	SK	1-1/16"	1-15/16"	5/8"	1-7/8"	16.5
32CCP	32	2.5	63	10-13/16	bushed	SK	1-1/16"	1-15/16"	5/8"	1-7/8"	18.5
38CCP	38	1.5	64	12-5/8	bushed	SK	1-1/16"	1-15/16"	5/8"	1-7/8"	23.5

Note: The 32-groove sprockets must be used with the 61CCB142 and are not interchangeable with other sprockets and belts.

Cotton Drive® Timing Belts & Sprockets

Synchronous Drive System



Synchronous Belts