

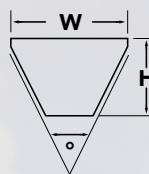
BANDO

PREMIUM METRIC V-BELTS

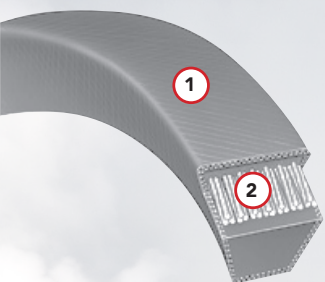
XPZ/SPZ, XPA/SPA, XPB/SPB, SPC

In addition to belts manufactured to ARPM (American Rubber Products Manufacturer) Standards, Bando produces belts to European Standard DIN 7753 and ISO 4184.

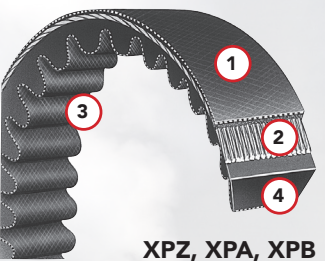
SP Belts - European Standard DIN 7753



	SPZ XPZ	SPA XPA	SPB XPB	SPC
W (mm)	9.5	12.5	16.0	22.0
H (mm)	8.0	10.0	13.5	18.0
° (degrees)	40	40	40	40

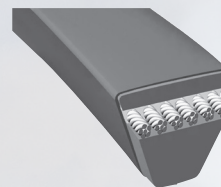


SPZ, SPA, SPB, SPC



XPZ, XPA, XPB

- 1. Cover** - The oil and heat resistant top cover protects the belt from damage while contributing to the belt's dimensional stability. The cover stock is bias cut to provide lateral stability while allowing axial flexibility.
- 2. Tension Member** - Stability is assured through the use of a formulated fiber loaded Banprene® cushion stock that maintains cord "lay" integrity and uniform distribution of load transmission.
- 3. The precision molded cogs** (X Series) provides optimum flexibility with a minimum of heat build up. Flexing generates heat, which will shorten belt life. The two (2) primary factors that increase replacement costs and down time.
- 4. Compression Section** - The fiber loaded compression section provides a high coefficient of friction.



European standards DIN 7753 and ISO 4184 are based on the metric system of measure and have different cross section designations.

The Narrow Wedge profile allows for higher speed ratios, shorter center distances and more compact drives. They are direct replacements for belts on imported machinery and on domestic equipment for export.

- Oil and heat resistant bias cut envelope protects the belt's inner components against dirt, oil and heat.
- Banprene® impregnated fabric provides lateral stability while permitting axial flexibility for operating around small pulley diameters.
- High density polyester tension members treated for fatigue and elongation resistance minimize maintenance costs.
- Banprene® compression section maintains tension member cross section uniformity while remaining flexible enough to reduce heat build up one of the primary causes of premature belt failure.

PREMIUM QUALITY POWER TRANSMISSION V-BELTS

S I N C E 1 9 0 6

WORLD-WIDE MANUFACTURING • WORLD CLASS QUALITY

SPA

Part#	Length (mm)	Part#	Length (mm)	Part#	Length (mm)	Part#	Length (mm)	Part#	Length (mm)	Part#	Length (mm)	Part#	Length (mm)	Part#	Length (mm)
SPA850	850	SPA1225	1225	SPA1432	1432	SPA1682	1682	SPA1900	1900	SPA2182	2182	SPA2650	2650	SPA3750	3750
SPA900	900	SPA1250	1250	SPA1457	1457	SPA1700	1700	SPA1907	1907	SPA2240	2240	SPA2732	2732	SPA4000	4000
SPA982	982	SPA1272	1272	SPA1500	1500	SPA1732	1732	SPA1932	1932	SPA2300	2300	SPA2782	2782	SPA4250	4250
SPA1060	1060	SPA1280	1280	SPA1532	1532	SPA1757	1757	SPA1957	1957	SPA2360	2360	SPA2800	2800	SPA4500	4500
SPA1120	1120	SPA1320	1320	SPA1550	1550	SPA1782	1782	SPA1982	1982	SPA2382	2382	SPA3000	3000		
SPA1132	1132	SPA1400	1400	SPA1557	1557	SPA1800	1800	SPA2000	2000	SPA2432	2432	SPA3182	3182		
SPA1150	1150	SPA1407	1407	SPA1582	1582	SPA1850	1850	SPA2032	2032	SPA2500	2500	SPA3350	3350		
SPA1180	1180	SPA1420	1420	SPA1600	1600	SPA1857	1857	SPA2057	2057	SPA2532	2532	SPA3500	3500		
SPA1207	1207	SPA1425	1425	SPA1632	1632	SPA1882	1882	SPA2120	2120	SPA2582	2582	SPA3630	3630		

SPB

Part#	Length (mm)	Part#	Length (mm)	Part#	Length (mm)	Part#	Length (mm)	Part#	Length (mm)	Part#	Length (mm)	Part#	Length (mm)	Part#	Length (mm)
SPB1250	1250	SPB1900	1900	SPB2360	2360	SPB2800	2800	SPB3450	3450	SPB4060	4060	SPB5070	5070	SPB6300	6300
SPB1320	1320	SPB2000	2000	SPB2410	2410	SPB2900	2900	SPB3550	3550	SPB4250	4250	SPB5300	5300	SPB6340	6340
SPB1400	1400	SPB2020	2020	SPB2500	2500	SPB3000	3000	SPB3600	3600	SPB4310	4310	SPB5380	5380	SPB6700	6700
SPB1500	1500	SPB2120	2120	SPB2530	2530	SPB3150	3150	SPB3650	3650	SPB4500	4500	SPB5600	5600	SPB7100	7100
SPB1600	1600	SPB2140	2140	SPB2580	2580	SPB3170	3170	SPB3750	3750	SPB4560	4560	SPB5680	5680	SPB7500	7500
SPB1625	1625	SPB2150	2150	SPB2650	2650	SPB3280	3280	SPB3800	3800	SPB4750	4750	SPB5900	5900	SPB7900	7900
SPB1700	1700	SPB2240	2240	SPB2720	2720	SPB3340	3340	SPB3870	3870	SPB4820	4820	SPB5990	5990	SPB8000	8000
SPB1800	1800	SPB2300	2300	SPB2750	2750	SPB3350	3350	SPB4000	4000	SPB5000	5000	SPB6000	6000	SPB8500	8500

SPC

Part #	Length (mm)	Part #	Length (mm)	Part #	Length (mm)	Part #	Length (mm)	Part #	Length (mm)	Part #	Length (mm)	Part #	Length (mm)	Part #	Length (mm)
SPC2000	2000	SPC2500	2500	SPC3100	3100	SPC3750	3750	SPC4400	4400	SPC5600	5600	SPC7100	7100		
SPC2120	2120	SPC2580	2580	SPC3150	3150	SPC4000	4000	SPC4450	4450	SPC6000	6000	SPC7500	7500		
SPC2240	2240	SPC2600	2600	SPC3300	3300	SPC4150	4150	SPC4750	4750	SPC6300	6300	SPC8200	8200		
SPC2300	2300	SPC2650	2650	SPC3350	3350	SPC4250	4250	SPC4800	4800	SPC6500	6500	SPC8500	8500		
SPC2360	2360	SPC2800	2800	SPC3500	3500	SPC4300	4300	SPC5000	5000	SPC6700	6700	SPC9000	9000		
SPC2410	2410	SPC3000	3000	SPC3550	3550	SPC4350	4350	SPC5300	5300	SPC7000	7000	SPC12500	12500		

SPZ

Part #	Length (mm)	Part #	Length (mm)	Part #	Length (mm)	Part #	Length (mm)	Part #	Length (mm)	Part #	Length (mm)	Part #	Length (mm)	Part #	Length (mm)
SPZ652	652	SPZ862	862	SPZ1012	1012	SPZ1187	1187	SPZ1512	1512	SPZ1800	1800	SPZ2000	2000	SPZ3000	3000
SPZ662	662	SPZ875	875	SPZ1024	1024	SPZ1212	1212	SPZ1560	1560	SPZ1812	1812	SPZ2037	2037	SPZ3350	3350
SPZ670	670	SPZ887	887	SPZ1037	1037	SPZ1237	1237	SPZ1587	1587	SPZ1837	1837	SPZ2087	2087	SPZ3550	3550
SPZ710	710	SPZ900	900	SPZ1060	1060	SPZ1320	1320	SPZ1600	1600	SPZ1850	1850	SPZ2120	2120		
SPZ760	760	SPZ912	912	SPZ1077	1077	SPZ1347	1347	SPZ1637	1637	SPZ1862	1862	SPZ2137	2137		
SPZ800	800	SPZ962	962	SPZ1112	1112	SPZ1400	1400	SPZ1662	1662	SPZ1920	1920	SPZ2240	2240		
SPZ812	812	SPZ975	975	SPZ1120	1120	SPZ1462	1462	SPZ1687	1687	SPZ1937	1937	SPZ2287	2287		
SPZ825	825	SPZ987	987	SPZ1162	1162	SPZ1487	1487	SPZ1700	1700	SPZ1950	1950	SPZ2437	2437		
SPZ837	837	SPZ1000	1000	SPZ1180	1180	SPZ1500	1500	SPZ1712	1712	SPZ1987	1987	SPZ2500	2500		

XPA

Part #	Length (mm)	Part #	Length (mm)	Part #	Length (mm)	Part #	Length (mm)	Part #	Length (mm)	Part #	Length (mm)	Part #	Length (mm)	Part #	Length (mm)
XPA782	782	XPA1107	1107	XPA1300	1300	XPA1482	1482	XPA1700	1700	XPA1950	1950	XPA2132	2132	XPA2800	2800
XPA832	832	XPA1120	1120	XPA1307	1307	XPA1500	1500	XPA1732	1732	XPA1982	1982	XPA2182	2182	XPA3000	3000
XPA900	900	XPA1132	1132	XPA1332	1332	XPA1525	1525	XPA1750	1750	XPA2000	2000	XPA2240	2240		
XPA932	932	XPA1157	1157	XPA1357	1357	XPA1550	1550	XPA1757	1757	XPA2032	2032	XPA2360	2360		
XPA950	950	XPA1180	1180	XPA1382	1382	XPA1582	1582	XPA1800	1800	XPA2057	2057	XPA2382	2382		
XPA1000	1000	XPA1232	1232	XPA1400	1400	XPA1600	1600	XPA1850	1850	XPA2060	2060	XPA2500	2500		
XPA1060	1060	XPA1250	1250	XPA1432	1432	XPA1650	1650	XPA1857	1857	XPA2082	2082	XPA2582	2582		
XPA1090	1090	XPA1282	1282	XPA1457	1457	XPA1682	1682	XPA1900	1900	XPA2120	2120	XPA2682	2682		

XPB

Part #	Length (mm)	Part #	Length (mm)	Part #	Length (mm)	Part #	Length (mm)	Part #	Length (mm)	Part #	Length (mm)	Part #	Length (mm)	Part #	Length (mm)
XPB1320	1320	XPB1500	1500	XPB1800	1800	XPB1950	1950	XPB2120	2120	XPB2360	2360	XPB3000	3000		
XPB1400	1400	XPB1600	1600	XPB1850	1850	XPB2000	2000	XPB2150	2150	XPB2500	2500	XPB3150	3150		
XPB1450	1450	XPB1700	1700	XPB1900	1900	XPB2060	2060	XPB2240	2240	XPB2800	2800				

XPZ

Part #	Length (mm)	Part #	Length (mm)	Part #	Length (mm)	Part #	Length (mm)	Part #	Length (mm)	Part #	Length (mm)	Part #	Length (mm)	Part #	Length (mm)
XPZ587	587	XPZ812	812	XPZ1000	1000	XPZ1162	1162	XPZ1340	1340	XPZ1562	1562	XPZ1837	1837	XPZ2187	2187
XPZ612	612	XPZ825	825	XPZ1012	1012	XPZ1180	1180	XPZ1387	1387	XPZ1587	1587	XPZ1850	1850	XPZ2240	2240
XPZ630	630	XPZ837	837	XPZ1030	1030	XPZ1187	1187	XPZ1400	1400	XPZ1637	1637	XPZ1862	1862	XPZ2287	2287
XPZ670	670	XPZ850	850	XPZ1037	1037	XPZ1202	1202	XPZ1420	1420	XPZ1662	1662	XPZ1900	1900	XPZ2360	2360
XPZ687	687	XPZ875	875	XPZ1060	1060	XPZ1212	1212	XPZ1437	1437	XPZ1687	1687	XPZ1950	1950	XPZ2800	2800
XPZ710	710	XPZ900	900	XPZ1080	1080	XPZ1237	1237	XPZ1462	1462	XPZ1700	1700	XPZ2000	2000	XPZ3000	3000
XPZ750	750	XPZ912	912	XPZ1087	1087	XPZ1250	1250	XPZ1487	1487	XPZ1737	1737	XPZ2037	2037		
XPZ787	787	XPZ925	925	XPZ1120	1120	XPZ1312	1312	XPZ1500	1500	XPZ1750	1750	XPZ2120	2120		
XPZ800	800	XPZ987	987	XPZ1150	1150	XPZ1320	1320	XPZ1560	1560	XPZ1800	1800	XPZ2137	2137		



@BandoUSAInc

BandoUSA.com

Customer Service: 800-829-6612 BandoUSA@bandogrp.com BUI 1000/04-18

