



PC284T-25-4

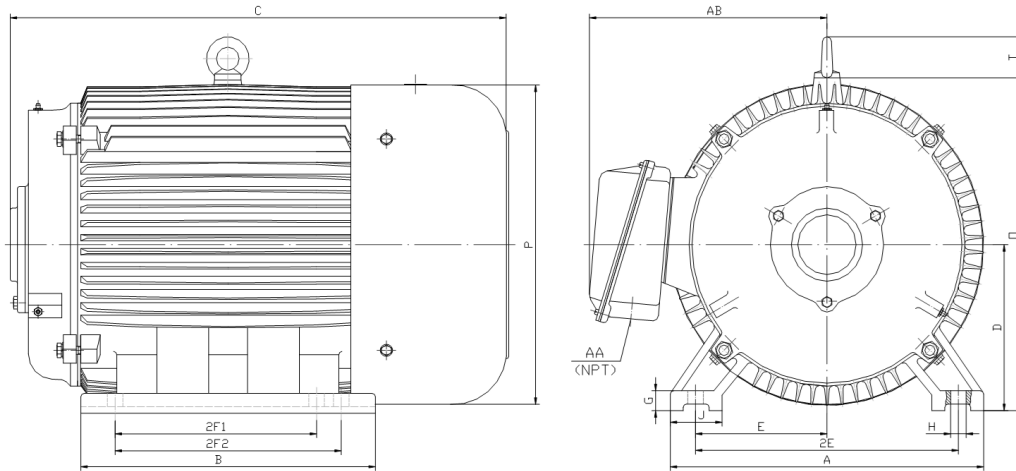
CONVERTER

DESIGNED FOR USE WITH ROTARY PHASE CONVERTER UNITS

TOTALLY ENCLOSED FAN COOLED

SPIKE RESISTANT WIRE (2200V PEAK VOLTAGE SPIKE RATING)

Factory Certified for T2B Class I, Division II, Groups A,B,C & D and Class II, Division II, Groups F & G



DIMENSIONS

HP	RPM	Frame	MOUNTING														
			A	B	C	D	G	H	J	E	2E	2F1	2F2	O	P	T	BA
25	1800	284T	14	13.2	21.98	7	0.85	0.53	2.75	5.5	11	9.5	NA	14.5	14	2.2	4.75

Conduit Box		Bearings		Mount
AA	AB	DE	ODE	
1.5	11.3	6311	6311	F1

BEARING LUBRICATION: The bearings come lubricated with Mobil Polyrex EM Polyurea Grease. It is recommended that you add some additional lubrication when the motor is installed.

Three options (brands) for suitable lubrication include, but are not limited to, the following:

- 1.) Mobil Polyrex EM
- 2.) Citco Polyurea MP
- 3.) Conoco Phillips Polytac EP





PC284T-25-4

CONVERTER

DESIGNED FOR USE WITH ROTARY PHASE CONVERTER UNITS

TOTALLY ENCLOSED FAN COOLED

SPIKE RESISTANT WIRE (2200V PEAK VOLTAGE SPIKE RATING)


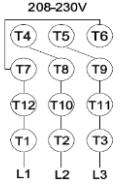
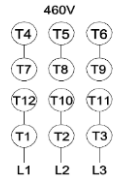



Factory Certified for T2B Class I, Division II, Groups A,B,C & D and Class II, Division II, Groups F & G

PERFORMANCE DATA

HP	RPM	Frame	Voltage	Frequency (Hz)	Full Load S.F.	Insulation Class	NEMA Design	Slip (%)	NEMA Code	Enclosure Type	IP Rating	Max. Ambient
25	1770	284T	208-230/460	60	1.15	F	B	1.7	G	TEFC	55	40 °C

Amps (460V)		Efficiency (%)		Power Factor	Torque (ft-lb)			DE Bearing	ODE Bearing	Connection	Weight (lbs.)
FLA	LRA	NOM.	MIN.	100%	FLT	LRT %	BDT %	6311	6311	12 Lead 2Δ/Δ	378
30	182	91.0	89.5	0.87	74.3	200	280				

NAME PLATE

										ROTARY PHASE CONVERTER INVERTER DUTY 20:1 VT; 10:1 CT Hernando, MS 38632			CONNECTION DIAGRAMS					
CAT NO.		PC284T-25-4				FRAME		284T		WT/LBS		378			208-230V 			
HZ	60	S.F.	1.15	HZ	50	S.F.	1.0	ENCL	TEFC	IP	55			460V 				
HP	25	RPM	1770	HP	25	RPM	1500	DUTY	CONT	DES	B							
VOLTS		208-230/460				VOLTS		190/380		AMB	40 °C	INS	F					
AMPS		65-60/30				AMPS		70/35		BRG DE/ODE		6311/6311						
CODE	G	P.F.	0.87	CODE	F	P.F.	0.89	LUB: Mobile Polyrex EM										
EFF	91.0	MIN	89.5	EFF	88.5	MIN	85.5	SER NO										
		AC INDUCTION CONVERTER																

APPLICATIONS:

Specifically designed for use as the converter component for rotary phase converters.