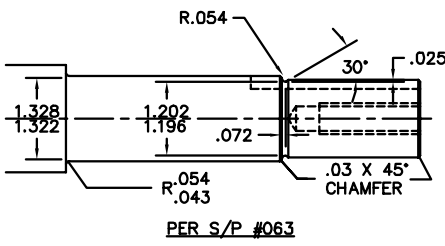
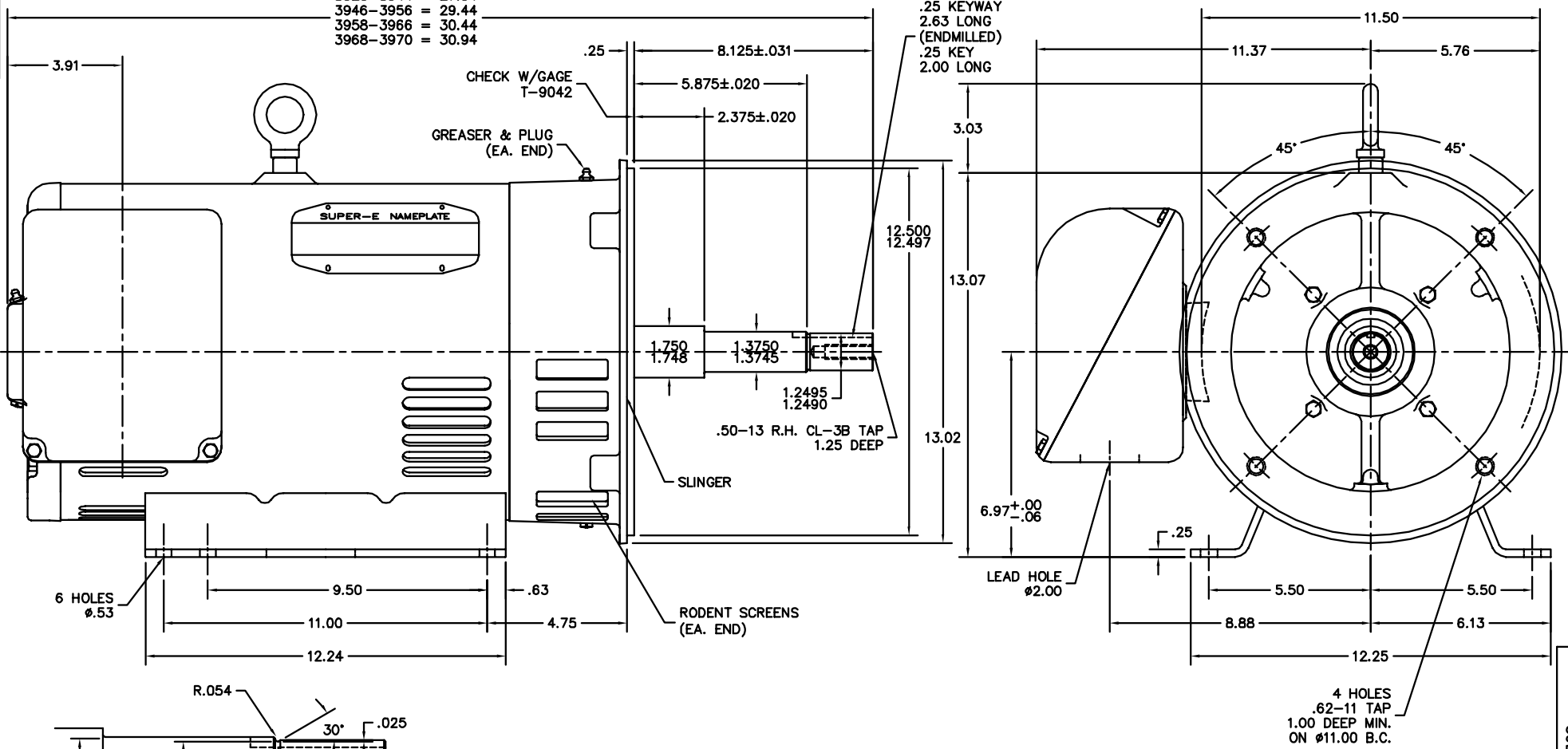


3920-3944 = 27.94  
 3946-3956 = 29.44  
 3958-3966 = 30.44  
 3968-3970 = 30.94



CUSTOMER IS RESPONSIBLE FOR DETERMINING THAT BALDOR'S PRODUCT WILL PERFORM SUITABLY IN THE INTENDED APPLICATION.

|  |                              |                   |
|--|------------------------------|-------------------|
| REV. DESC: CHG PUEP 39EP1404A03 TO 39EP1404A09 |                              |                   |
| REV. LTR: D                                    | VERSION: 04                  | TDR: 000001014103 |
| FILE: \AAA\00163\288                           | REVISED: 02:04:38 02/06/2017 | BY: USODDIL       |
| MTL: -   |                              |                   |

**BALDOR**

HOR OPSB 284-6JP W/312 BRG & ROD SCREENS, SUPER-E  
 SH 1 of 1