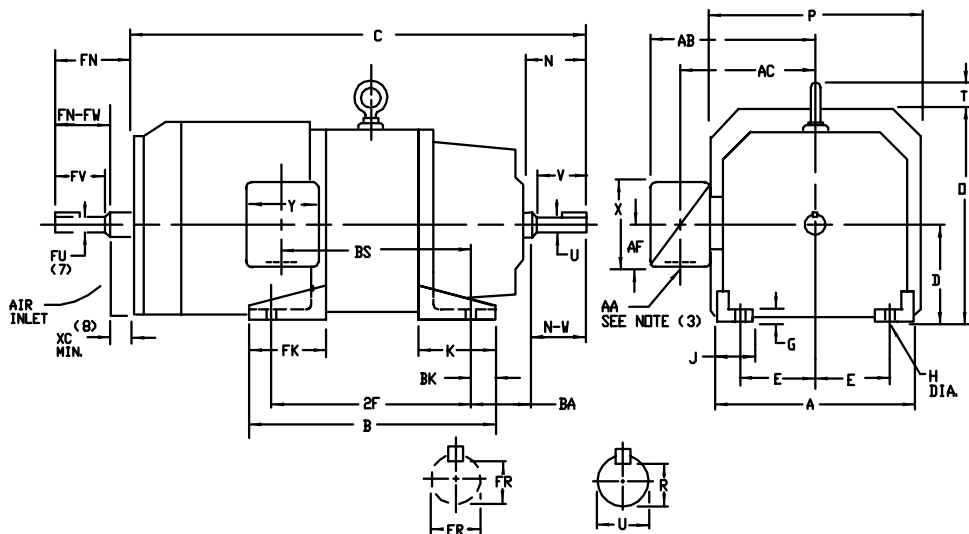


# INDUSTRIAL DIRECT CURRENT MOTORS AND GENERATORS - RPM III

ENCLOSURE: TOTALLY ENCLOSED      COOLING: FAN COOLED  
MOUNTING: FOOT  
METHOD OF DRIVE: COUPLED OR BELTED      FRAMES C180ATZ



DIMENSIONS ARE IN INCHES

FRAME	A	BK (1)	E	G	H	J	D	P	T	BA	K	FK	BK	XC (8)
C1811ATZ-C1812ATZ	9.00	4.50	3.75	.31	1.44	1.50	9.50	10.00	1.88	2.75	4.38	4.38	.50	1.00

FRAME	C	B	BS	2F	DRIVE END SHAFT AND KEY					OPPOSITE DRIVE END SHAFT AND KEY (7)					WT. LBS.				
					N	N-W	UK (2)	V	RK (4)	SO.	LGTH	FN	FN-FW	FUK (2)		FV	FRK (4)	SO.	LGTH
C1811ATZ	27.31	14.00	11.00	12.50	3.00	2.75	1.3750	2.50	1.201	.312	1.75	3.25	2.25	1.1250	2.00	.986	.250	1.38	200
C1812ATZ	28.61	15.50	12.50	14.00	3.00	2.75	1.3750	2.50	1.201	.312	1.75	3.25	2.25	1.1250	2.00	.986	.250	1.38	235

FRAME	MAX. AMPS	STEEL TERMINAL BOX DIMENSIONS										PART NUMBER			
		STANDARD SIZE					ONE SIZE LARGER								
		AAK (5)	AB	AC	AF	X	Y	AAK (5)	AB	AC	AF		X	Y	
C180ATZ	40	3/4 & 1"	7.31	5.75	1.94	4.38	5.00	705028-1-R	1-1/4 & 1-1/2	8.31	6.31	2.50	5.50	6.12	705029-1-R
	96	1-1/4 & 1-1/2	8.31	6.31	2.50	5.50	6.12	705029-1-R	2" & 2-1/2	9.44	6.69	3.19	7.00	7.62	705030-1-R

FRAME	MAX. AMPS	CAST IRON TERMINAL BOX DIMENSIONS										PART NUMBER			
		STANDARD SIZE					ONE SIZE LARGER								
		AAK (6)	AB	AC	AF	X	Y	AAK (6)	AB	AC	AF		X	Y	
C180ATZ	18	3/4	9.38	7.38	2.50	5.00	5.75	705028-2-S	1	9.38	7.38	2.50	5.00	5.75	705028-2-T
	40	1	9.38	7.38	2.50	5.00	5.75	705028-2-T	1-1/2	10.31	7.88	3.00	6.00	7.00	705029-2-R
	96	1-1/2	10.31	7.88	3.00	6.00	7.00	705029-2-R	2	10.31	7.88	3.00	6.00	7.00	705029-2-S

- (1) "D" DIMENSION WILL NOT BE EXCEEDED. SHIMS UP TO .03 INCHES IN THICKNESS ARE USUALLY REQUIRED FOR COUPLED OR GEARED MACHINES.
  - (2) "U" AND "FU" VARY +.0000 - .0005
  - (3) TERMINAL BOX CAN BE ROTATED FOR LEAD OUTLET AT TOP, SIDES OR BOTTOM. FOR "X/P" TERMINAL BOX DIMENSIONS SEE 609989-1. FOR "U" TYPE TERMINAL BOX DIMENSIONS SEE 609989-2.
  - (4) "R" AND "FR" VARY +.000, -.015.
  - (5) AA CONDUIT, TERMINAL BOX PROVIDED WITH DOUBLE KNOCKOUT.
  - (6) AA PIPE TAP
  - (7) OPPOSITE DRIVE END SHAFT SUPPLIED ONLY WHEN SPECIFIED.
  - (8) WALLS OR OBSTRUCTIONS MUST NOT ENCRDACH ON AIR INLET SPACE "XC".
- TERMINAL BOX LOCATED ON OPPOSITE SIDE WHEN F-2, V-1, V-4, V-5, V-7 OR C-1 MOUNTING IS SPECIFIED. BOX LOCATED ON TOP WHEN SPECIFIED.
- MOTOR WEIGHT MAY VARY 15% FOR NON-STANDARD RATINGS AND/OR ACCESSORIES.
- IF MOUNTING CLEARANCE DETAILS ARE REQUIRED, CONSULT FACTORY.

CUSTOMER IS RESPONSIBLE FOR DETERMINING THAT BALDOR'S PRODUCT WILL PERFORM SUITABLY IN THE INTENDED APPLICATION.

REV. DESC: REVISED DRAWING VIEWS		
REV. LTR: A	VERSION: 01	TDR: 000000861772
FILE: \RSN\00029\605	REVISED: 12:42:36 08/15/2014	BY: RSNPSB
MTL: -		

## BALDOR

DIMENSION DRAWING, C180ATZ, TEFC, FOOT MTG.