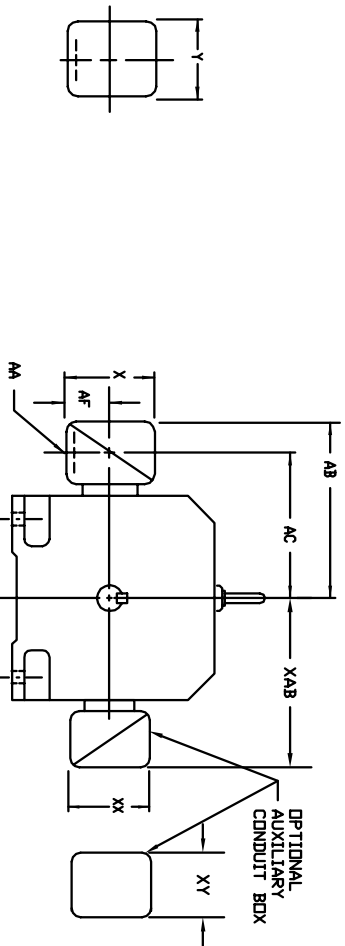


**INDUSTRIAL DIRECT CURRENT MOTORS
AND GENERATORS - RPM III**
TERMINAL BOX DIMENSIONS
STANDARD SIZE AND ONE SIZE LARGER
FRAMES C2113ATZ THRU C2815ATZ



FRAME SIZE	MAX. AMPS	STANDARD SIZE						ONE SIZE LARGER							
		AA(3)	AB	AC	AF	X	Y	AA(3)	AB	AC	AF	X	Y		
C2113ATZ	96	3/4	10.03	8.03	2.50	5.00	5.75	705028-2-T	1"	10.03	8.03	2.50	5.00	5.75	705028-2-T
C2113ATZ	96	1-1/4 & 1-1/2	10.03	8.03	2.50	5.00	5.75	705029-2-R	1-1/2	10.97	8.53	3.00	6.00	7.00	705029-2-S
C2113ATZ (2)	208	2"	11.16	8.41	3.19	7.00	7.62	705030-1-R	2"	11.16	8.41	3.19	7.00	7.62	705030-1-R
C2113ATZ (2)	400	3/4 & 1"	10.03	8.53	1.94	4.38	5.00	705028-1-R	1-1/4 & 1-1/2	11.09	9.09	2.50	5.00	6.12	705029-1-R
C2113ATZ (2)	96	1-1/4 & 1-1/2	11.09	9.09	2.50	5.00	5.62	705029-1-R	2"	12.22	9.47	3.19	7.00	7.62	705030-1-R
C2113ATZ (2)	208	2"	12.22	9.47	3.19	7.00	7.62	705030-1-R	2"	14.47	11.22	4.25	8.44	7.25	74874-24-R
C2812ATZ	128	2"	14.03	10.53	4.25	8.44	7.25	74874-R	3"	14.47	11.22	4.25	8.44	7.25	74874-24-R
C2813ATZ	165	3"	14.47	11.22	4.25	8.44	7.25	74874-24-R	4"	15.91	11.84	5.38	10.56	9.00	700308-3-R
C2815ATZ	269	4"	15.91	11.84	5.38	10.56	9.00	700308-3-R	5" (4)	18.72	13.47	7.00	12.75	15.00	702658-1-C

FRAME SIZE	MAX. AMPS	STANDARD SIZE						ONE SIZE LARGER							
		AA(3)	AB	AC	AF	X	Y	AA(3)	AB	AC	AF	X	Y		
C2113ATZ	18	3/4	10.03	8.03	2.50	5.00	5.75	705028-2-S	1"	10.03	8.03	2.50	5.00	5.75	705028-2-T
C2113ATZ	40	1"	10.03	8.03	2.50	5.00	5.75	705028-2-T	1-1/2	10.97	8.53	3.00	6.00	7.00	705029-2-R
C2113ATZ	96	1-1/2	10.97	8.53	3.00	6.00	7.00	705029-2-R	2"	10.97	8.53	3.00	6.00	7.00	705029-2-S
C2113ATZ	208	2"	10.97	8.53	3.00	6.00	7.00	705029-2-S	2-1/2	12.66	8.91	3.62	7.88	9.25	705030-2-R
C2512ATZ	18	3/4	11.09	9.09	2.50	5.00	5.75	705028-2-S	1"	11.09	9.09	2.50	5.00	5.75	705028-2-T
C2512ATZ	40	1"	11.09	9.09	2.50	5.00	5.75	705028-2-T	1-1/2	12.03	9.59	3.00	6.00	7.00	705029-2-R
C2514ATZ	96	1-1/2	12.03	9.59	3.00	6.00	7.00	705029-2-R	2"	12.03	9.59	3.00	6.00	7.00	705029-2-S
C2515ATZ	208	2"	12.03	9.59	3.00	6.00	7.00	705029-2-S	2-1/2	13.72	9.97	3.62	7.88	9.25	705030-2-R
C2812ATZ	128	2"	12.78	10.34	3.00	6.00	7.00	75460-T	3"	14.47	10.72	3.62	7.88	9.25	76700-4R
C2813ATZ	185	3"	14.47	10.72	3.62	7.88	9.25	76700-4R	4"	15.78	11.59	4.12	9.50	10.50	76700-4R
C2815ATZ	269	4"	15.78	11.59	4.12	9.50	10.50	76700-4R	5" (4)	18.59	13.34	7.00	12.75	15.00	76870-S

CONDUIT BOX DIMENSIONS WITH TERMINAL BOARDS (IEC TYPE BOX)
STANDARD SIZE

FRAME SIZE	AMPS	AB	AC	AF	X	AA	Y	PART NUMBER	PART NUMBER
C210	100	10.71	8.98	2.72	7.48	7.48	7.48	706310-56-A	706310-225-R
	200	11.26	9.25	3.35	8.82	8.82	8.82	706310-56-B	706310-226-R
	100	11.30	9.57	2.72	7.48	7.48	7.48	706310-56-A	706310-225-R
	200	11.85	9.84	3.35	8.82	8.82	8.82	706310-56-B	706310-226-R
C250	400	17.48	12.75	6.20	14.39	14.39	14.39	706310-63-B & 706310-63G	706310-63-B & 706310-63G
	800	17.48	12.75	6.20	14.39	14.39	14.39	706310-63-B & 706310-63G	706310-63-B & 706310-63G
	200	12.60	10.59	3.76	8.82	8.82	8.82	706310-63-B	706310-226-R
	400	18.27	13.54	6.20	14.39	14.39	14.39	706310-63-B & 706310-63G	706310-63-B & 706310-63G
	800	18.27	13.54	6.20	14.39	14.39	14.39	706310-63-B & 706310-63G	706310-63-B & 706310-63G
C280	1600	18.27	13.54	7.68	15.35	15.35	15.35	706310-63-C	706310-63-C

FRAME SIZE	OPTIONAL AUXILIARY CONDUIT BOX DIMENSIONS (MAXIMUM)					
	XAB	XY	XY	PART NUMBER	FRAME SIZE	PART NUMBER
C210	7.38	4.25	4.25	602007-26-A	C210	706310-3-B
C250	8.44	4.25	4.25	602007-26-A	C250	706310-3-B
C280	9.12	4.25	4.25	602007-26-A	C280	706310-3-B

(1) 'AA' CONDUIT.
 (2) STEEL TERMINAL BOX FOR C2113ATZ AND C2512ATZ
 FRAMES PROVIDED WITH DOUBLE KNOCKOUT.
 (3) 'AA' PIPE TAP.
 (4) TERMINAL BOX 76870-S AND 76870-9R EXTENDS BELOW MOTOR FEET.
 TERMINAL BOX CAN BE ROTATED FOR LEAD OUTLET AT TOP, SIDES OR BOTTOM.
 TERMINAL BOX LOCATED ON OPPOSITE SIDE WHEN F-2, V-1, V-4, V-5, V-7,
 OR C-1 MOUNTING IS SPECIFIED. BOX LOCATED ON TOP WHEN SPECIFIED.
 FOR 'X/P' TERMINAL BOX DIMENSIONS SEE 609959-2.
 FOR MILL TYPE TERMINAL BOX DIMENSIONS SEE 609959-3.

CUSTOMER IS RESPONSIBLE FOR DETERMINING THAT BALDOR'S PRODUCT WILL PERFORM SUITABLY IN THE INTENDED APPLICATION.

REV. DESC: ADD 706310-63G C/BOX TO C250 AND C280 FRAMES	VERSION: 01	TDR: 00000816512
REV. LTR: A		REVISED: 03:09:09 09/06/2013
FILE: \RGG\00021\153		BY: RGGWT
MTL: -		



DIMENSION SHEET

SH 1 of 1