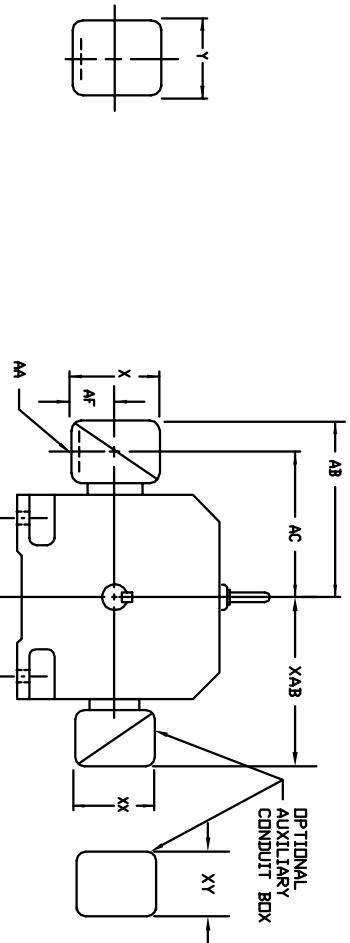


# INDUSTRIAL DIRECT CURRENT MOTORS AND GENERATORS - RPM III

TERMINAL BOX DIMENSIONS  
STANDARD SIZE AND ONE SIZE LARGER  
FRAMES C2113ATZ THRU C2815ATZ



DIMENSIONS ARE IN INCHES

FRAME SIZE	MAX. AMPS	STANDARD SIZE						STEEL TERMINAL BOX DIMENSIONS						ONE SIZE LARGER							
		AA(3)	AB	AC	AF	X	Y	AA(1)	AB	AC	AF	X	Y	AA(3)	AB	AC	AF	X	Y		
C2113ATZ	40	3/4	10.03	8.03	2.50	5.00	5.75	705028-2-S	1"	10.03	8.03	2.50	5.00	5.75	705028-2-T	10.03	8.03	2.50	5.00	5.75	705029-2-R
C2113ATZ	96	1-1/4 & 1-1/2	10.03	8.03	2.50	5.50	5.50	705029-1-R	2" & 2-1/2	11.16	8.41	3.19	7.00	7.62	705030-1-R	11.16	8.41	3.19	7.00	7.62	705030-1-R
C2113ATZ (2)	208	2" & 2-1/2	11.16	8.41	3.19	7.00	7.62	705030-1-R	2" & 2-1/2	11.16	8.41	3.19	7.00	7.62	705030-1-R	11.16	8.41	3.19	7.00	7.62	705030-1-R
C2113ATZ	40	3/4 & 1"	10.03	8.53	1.94	4.38	5.00	705028-1-R	1-1/4 & 1-1/2	11.09	9.09	2.50	5.50	6.12	705029-1-R	11.09	9.09	2.50	5.50	6.12	705029-1-R
C2113ATZ (2)	96	1-1/4 & 1-1/2	11.09	9.09	2.50	5.50	6.12	705029-1-R	2" & 2-1/2	12.22	9.47	3.19	7.00	7.62	705030-1-R	12.22	9.47	3.19	7.00	7.62	705030-1-R
C2113ATZ	208	2" & 2-1/2	12.22	9.47	3.19	7.00	7.62	705030-1-R	2" & 2-1/2	12.22	9.47	3.19	7.00	7.62	705030-1-R	12.22	9.47	3.19	7.00	7.62	705030-1-R
C2812ATZ	128	2"	14.03	10.53	4.25	8.44	7.25	74874-R	3"	14.47	11.22	4.25	8.44	7.25	74874-24-R	14.47	11.22	4.25	8.44	7.25	74874-24-R
C2813ATZ	185	3"	14.47	11.22	4.25	8.44	7.25	74874-24-R	4"	15.91	11.84	5.38	9.00	700308-3-R	15.91	11.84	5.38	9.00	700308-3-R		
C2815ATZ	269	4"	15.91	11.84	5.38	9.00	700308-3-R	5" (4)	18.72	13.47	7.00	12.75	15.00	702658-1-C	18.72	13.47	7.00	12.75	15.00	702658-1-C	

FRAME SIZE	MAX. AMPS	STANDARD SIZE						CAST IRON TERMINAL BOX DIMENSIONS						ONE SIZE LARGER							
		AA(3)	AB	AC	AF	X	Y	AA(3)	AB	AC	AF	X	Y	AA(3)	AB	AC	AF	X	Y		
C2113ATZ	18	3/4	10.03	8.03	2.50	5.00	5.75	705028-2-S	1"	10.03	8.03	2.50	5.00	5.75	705028-2-T	10.03	8.03	2.50	5.00	5.75	705029-2-R
C2113ATZ	40	1"	10.03	8.03	2.50	5.00	5.75	705028-2-T	1-1/2	10.97	8.53	3.00	6.00	7.00	705029-2-S	10.97	8.53	3.00	6.00	7.00	705029-2-S
C2113ATZ	96	1-1/2	10.97	8.53	3.00	6.00	7.00	705029-2-S	2"	12.66	8.91	3.62	7.88	9.25	705030-2-R	12.66	8.91	3.62	7.88	9.25	705030-2-R
C2113ATZ	208	2"	12.66	8.91	3.62	7.88	9.25	705030-2-R	2-1/2	14.47	10.72	3.62	7.88	9.25	76700-4R	14.47	10.72	3.62	7.88	9.25	76700-4R
C2512ATZ	18	3/4	11.09	9.09	2.50	5.00	5.75	705028-2-S	1"	11.09	9.09	2.50	5.00	5.75	705028-2-T	11.09	9.09	2.50	5.00	5.75	705028-2-T
C2512ATZ	40	1"	11.09	9.09	2.50	5.00	5.75	705028-2-T	1-1/2	12.03	9.59	3.00	6.00	7.00	705029-2-R	12.03	9.59	3.00	6.00	7.00	705029-2-R
C2514ATZ	96	1-1/2	12.03	9.59	3.00	6.00	7.00	705029-2-R	2"	13.72	9.97	3.62	7.88	9.25	705030-2-R	13.72	9.97	3.62	7.88	9.25	705030-2-R
C2515ATZ	208	2"	12.03	9.59	3.00	6.00	7.00	705029-2-S	2-1/2	14.47	10.72	3.62	7.88	9.25	76700-4R	14.47	10.72	3.62	7.88	9.25	76700-4R
C2812ATZ	128	2"	12.78	10.34	3.00	6.00	7.00	75460-T	3"	14.47	10.72	3.62	7.88	9.25	76700-4R	14.47	10.72	3.62	7.88	9.25	76700-4R
C2813ATZ	185	3"	14.47	10.72	3.62	7.88	9.25	76700-4R	4"	15.78	11.59	4.12	9.50	10.50	76870-S	15.78	11.59	4.12	9.50	10.50	76870-S
C2815ATZ	269	4"	15.78	11.59	4.12	9.50	10.50	76870-S	5" (4)	18.59	13.34	7.00	12.75	15.00	76870-S	18.59	13.34	7.00	12.75	15.00	76870-S

CONDUIT BOX DIMENSIONS WITH TERMINAL BOARDS (IEC TYPE BOX)  
STANDARD SIZE

FRAME SIZE	AB	AC	AF	X	AA	Y	PART NUMBER	PART NUMBER
C210	100	10.71	8.98	2.72	7.48	7.48	706310-56-A	706310-225-R
	200	11.26	9.25	3.35	8.82	8.82	706310-56-B	706310-226-R
	100	11.30	9.57	2.72	7.48	7.48	706310-56-A	706310-225-R
	200	11.85	9.84	3.35	8.82	8.82	706310-56-B	706310-226-R
C250	400	17.48	12.75	6.20	14.39	14.39	706310-63-B & 706310-63G	706310-63-B & 706310-63G
	800	17.48	12.75	6.20	14.39	14.39	706310-63-B & 706310-63G	706310-63-B & 706310-63G
	200	12.60	10.59	3.76	8.82	8.82	706310-63-B	706310-226-R
	400	18.27	13.54	6.20	14.39	14.39	706310-63-B & 706310-63G	706310-63-B & 706310-63G
	800	18.27	13.54	6.20	14.39	14.39	706310-63-B & 706310-63G	706310-63-B & 706310-63G
C280	1600	18.27	13.54	7.68	15.35	15.35	706310-63-C	706310-63-C

FRAME SIZE	XAB	XY	XY	XY	PART NUMBER	FRAME SIZE	XAB	XY	XY	PART NUMBER
C210	7.38	4.25	4.25	6.02	706310-3-B	C210	11.88	8.00	8.00	706310-3-B
C250	8.44	4.25	4.25	6.02	706310-3-B	C250	11.88	8.00	8.00	706310-3-B
C280	9.12	4.25	4.25	6.02	706310-3-B	C280	12.62	8.00	8.00	706310-3-B

- (1) 'AA' CONDUIT.
- (2) STEEL TERMINAL BOX FOR C2113ATZ AND C2512ATZ
- (3) 'AA' PIPE TAP
- (4) TERMINAL BOX 76870-S AND 76870-9R EXTENDS BELOW MOTOR FEET.
- TERMINAL BOX CAN BE ROTATED FOR LEAD OUTLET AT TOP, SIDES OR BOTTOM.
- TERMINAL BOX LOCATED ON OPPOSITE SIDE WHEN F-2, V-1, V-4, V-5, V-7, OR C-1 MOUNTING IS SPECIFIED. BOX LOCATED ON TOP WHEN SPECIFIED.
- FOR 'X/P' TERMINAL BOX DIMENSIONS SEE 609959-2.
- FOR MILL TYPE TERMINAL BOX DIMENSIONS SEE 609959-3.

CUSTOMER IS RESPONSIBLE FOR DETERMINING THAT BALDOR'S PRODUCT WILL PERFORM SUITABLY IN THE INTENDED APPLICATION.

REV. DESC: ADD 706310-63G C/BOX TO C250 AND C280 FRAMES	VERSION: 01	TDR: 00000816512
REV. LTR: A		REVISED: 03:09:09 09/06/2013
FILE: \RGG\00021\153		BY: RGGWT
MTL: -		



DIMENSION SHEET