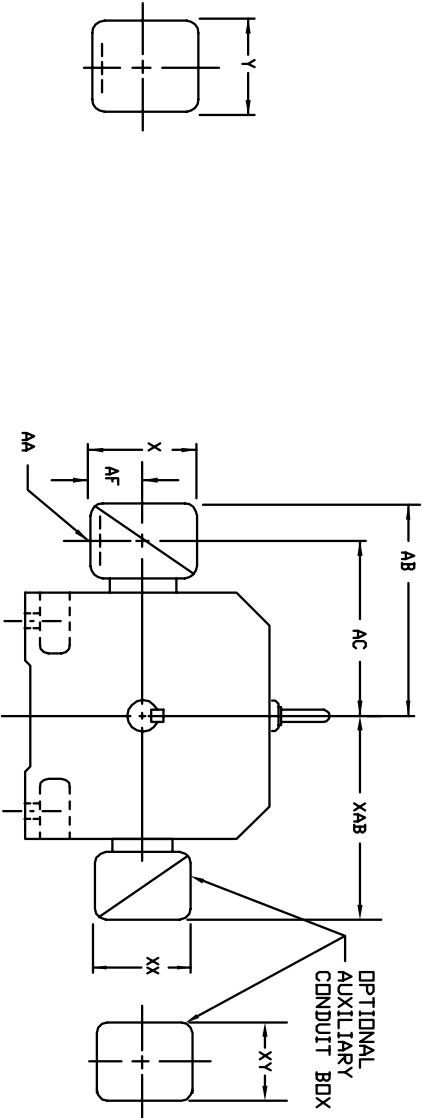


INDUSTRIAL DIRECT CURRENT MOTORS AND GENERATORS - RPM III

STEEL AND CAST IRON TERMINAL BOX DIMENSIONS
STANDARD SIZE AND ONE SIZE LARGER
FRAMES C3210A1Z THRU C3613A1Z



DIMENSIONS ARE IN INCHES

FRAME SIZE	MAX. AMPS	STANDARD SIZE					ONE SIZE LARGER					PART NUMBER		
		AA(1)	AB	AC	AF	X	Y	AA(1)	AB	AC	AF		X	Y
C3210A1Z	128	2	14.88	11.38	4.25	8.44	7.25	3	15.31	12.06	4.25	8.44	7.25	74874-24-R
C3212A1Z	185	3	15.31	12.06	4.25	8.44	7.25	4	16.75	12.69	5.38	10.56	9.00	700308-3-R
C3214A1Z	269	4	16.75	12.69	5.38	10.56	9.00	5	21.00	15.88	6.50	12.10	14.62	702658-1-C
C3612A1Z	185	2	15.88	12.38	4.25	8.44	7.25	3	16.31	13.06	4.25	8.44	7.25	74874-24-R
C3613A1Z	269	3	16.31	13.06	4.25	8.44	7.25	4	17.75	13.69	5.38	10.56	9.00	700308-3-R
	500	4	17.75	13.69	5.38	10.56	9.00	5	22.00	15.88	6.50	12.10	14.62	702658-1-C
	500	5	22.00	15.88	6.50	12.10	14.62	5	22.00	15.88	6.50	12.10	14.62	702658-1-C

FRAME SIZE	MAX. AMPS	STANDARD SIZE					ONE SIZE LARGER					PART NUMBER		
		AA(2)	AB	AC	AF	X	Y	AA(2)	AB	AC	AF		X	Y
C3210A1Z	185	1-1/2	13.62	11.19	3.00	6.00	7.00	3	15.31	11.56	3.62	7.88	9.25	76700-RB
C3212A1Z	269	3	15.31	11.56	3.62	7.88	9.25	4	16.62	12.44	4.12	9.50	10.50	76708-RR
C3214A1Z	500	4	16.62	12.44	4.12	9.50	10.50	5	19.44	14.19	7.00	12.75	15.00	76870-S
C3612A1Z	185	1-1/2	14.62	12.19	3.00	6.00	7.00	3	16.31	12.56	3.62	7.88	9.25	76700-RB
C3613A1Z	269	3	16.31	12.56	3.62	7.88	9.25	4	17.62	13.44	4.12	9.50	10.50	76708-RR
	500	4	17.62	13.44	4.12	9.50	10.50	5	20.44	15.19	7.00	12.75	15.00	76870-S
	500	5	20.44	15.19	7.00	12.75	15.00	6	20.44	15.19	7.00	12.75	15.00	76870-R

FRAME SIZE	AMPS	STANDARD SIZE					ONE SIZE LARGER					PART NUMBER
		AB	AC	AF	X	Y	AA (3)	Y				
C320	400	19.02	15.28	6.20	14.39	---	14.39				706310-63-B	
	800	19.02	15.28	6.20	14.39	---	14.39				706310-63-B	
	1600	19.02	15.28	7.68	15.35	---	15.35				706310-63-C	
C360	400	20.00	15.28	6.20	14.39	---	14.39				706310-63-B	
	800	20.00	15.28	6.20	14.39	---	14.39				706310-63-B	
	1600	20.00	15.28	7.68	15.35	---	15.35				706310-63-C	

- OPTIONAL AUXILIARY CONDUIT BOX DIMENSIONS (MAXIMUM)
- | FRAME SIZE | XAB | XX | XY | PART NUMBER | FRAME SIZE | XAB | XX | XY | PART NUMBER |
|------------|-------|------|------|-------------|------------|-------|------|------|-------------|
| C320 | 10.00 | 4.25 | 4.25 | 602007-26-A | C320 | 13.50 | 8.00 | 8.00 | 706310-3-B |
| C360 | 11.00 | 4.25 | 4.25 | 602007-26-A | C360 | 14.50 | 8.00 | 8.00 | 706310-3-B |
- (1) 'AA' CONDUIT.
 - (2) 'AA' PIPE TAP.
 - (3) CUSTOMER TO PROVIDE HOLE FOR CONDUIT.
- TERMINAL BOX CAN BE ROTATED FOR LEAD OUTLET AT TOP, SIDES OR BOTTOM.
DR C-1 ADDITIONAL SPECIFIED. BOX LOCATED ON TOP WHEN SPECIFIED.
FOR 'X/P' TERMINAL BOX DIMENSIONS SEE 609979-2.
FOR MILL TYPE TERMINAL BOX DIMENSIONS SEE 609979-3.

CUSTOMER IS RESPONSIBLE FOR DETERMINING THAT BALDOR'S PRODUCT WILL PERFORM SUITABLY IN THE INTENDED APPLICATION.

REV. DESC: LOAD TO BUS	VERSION: 00	TDR: 000000958110
REV. LTR: -	REVISED: 08:37:45 12/17/2015	BY: RGGWT
FILE: \RGG\00026\318		
MTL: -		



DIM SHT,C3210ATZ THRU C3613ATZ,W/AUX C/BOX
SH 1 of 1