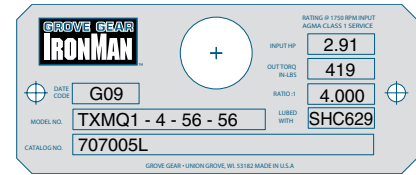


STOCK RATIO MULTIPLIER MODEL NUMBER SYSTEM

CAST IRON
GR SERIES

ALUMINUM
EL SERIES

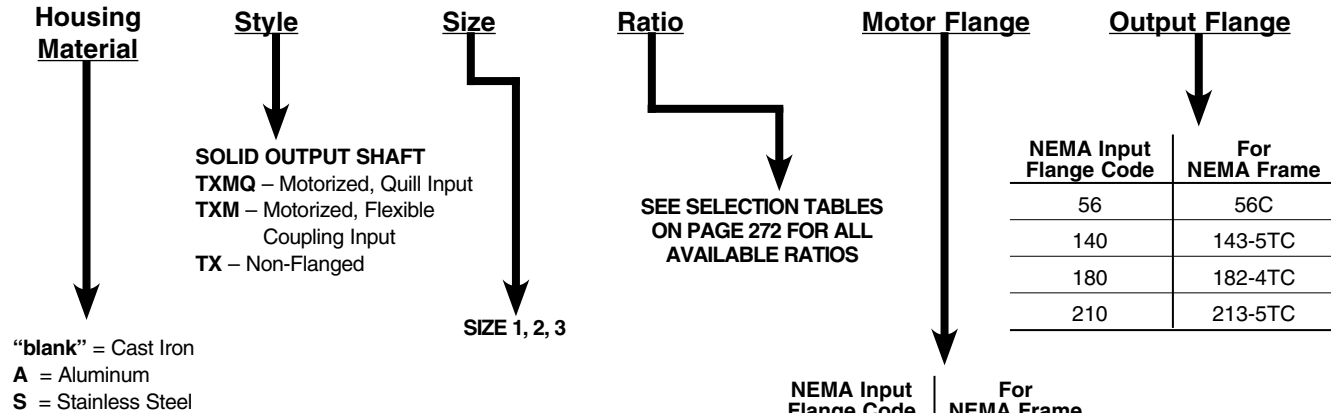
TYPICAL NAMEPLATE (Grove Gear shown)



Grove Gear 800 Series Ratio Multiplier Model Number Nomenclature

All stock and custom 800 series reducers are identified by a model number. The model number appears on the nameplate and describes pertinent features of the reducer. An example follows, along with a listing of the various letters and positions used.

NOTE: All ratio multipliers also have a catalog number—for example 707012L. Reducers and renewal parts should be ordered by catalog number. Accessories that are field installed will not be noted on the nameplate.



Sample Model Number

Motorized Quill Input Series 1; 4:1 Ratio, 5/8” Input Bore with NEMA 56C Flange, and 56C output flange.

TXMQ **1** **4** **56** **56**
Style **Size** **Ratio** **Motor Input Flange** **Output Flange**

ALL RATINGS SAME FOR CAST IRON, ALUMINUM, and STAINLESS STEEL RATIO MULTIPLIERS

MAXIMUM RATING TABLES Size 1

Exact Ratio	Input R.P.M.	Output R.P.M.	Input H.P.	Output H.P.	Output TQ. (lb-in.)	Overhung Load (lbs.)
2.056	1750	851	4.69	4.55	347	222
2.929	1750	598	3.64	3.53	384	265
4.000	1750	438	2.91	2.82	419	300
5.111	1750	342	2.33	2.26	428	300
7.462	1750	235	1.56	1.52	419	300

Size 2

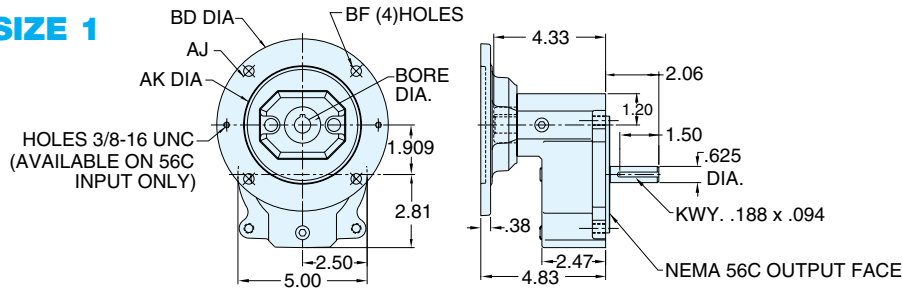
Exact Ratio	Input R.P.M.	Output R.P.M.	Input H.P.	Output H.P.	Output TQ. (lb-in.)	Overhung Load 56C Output (lbs.)	Overhung Load 140TC Output (lbs.)
2.000	1750	875	6.00	5.88	424	358	358
2.913	1750	601	4.21	4.13	433	375	434
4.000	1750	438	3.63	3.55	511	375	455
5.000	1750	350	3.00	2.94	529	375	455
7.182	1750	244	2.62	2.57	664	375	455

Size 3

Exact Ratio	Input R.P.M.	Output R.P.M.	Input H.P.	Output H.P.	Output TQ. (lb-in.)	Overhung Load (lbs.)
2.000	1750	875	20.00	19.6	1412	900
2.964	1750	590	12.98	12.72	1357	900
4.045	1750	433	11.35	11.13	1621	900
5.167	1750	339	10.07	9.87	1836	900
7.538	1750	232	5.80	5.69	1544	900

Additional Capabilities

SIZE 1



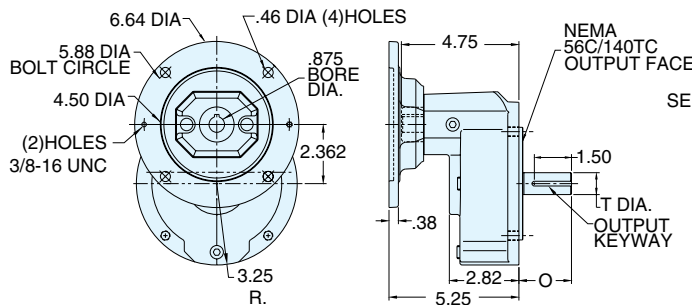
SIZE 1 DIMENSIONS (Inches)

Style	Frame Combinations (Input - Output)	AJ	AK	BD	BF	Input Bore	Input Keyway*	Weight (lbs.)
TXMQ	48CZ - 56C	3.75	3.00	4.36	0.28	.500	1/8 X 1/16	19
	56C - 56C	5.88	4.50	6.64	0.41	.625	3/16 X 3/32	19

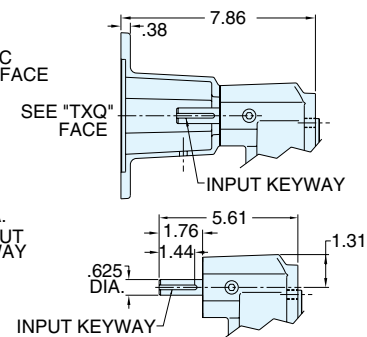
* Keyway width by depth

SIZE 2

Style TXMQ



Style TXM



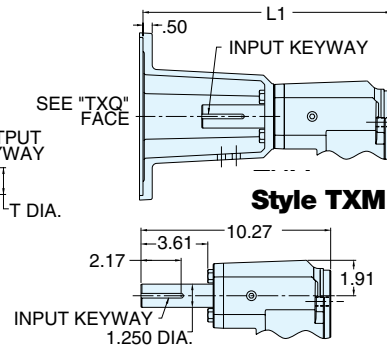
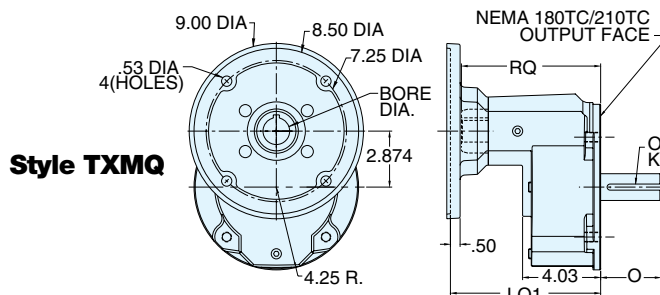
SIZE 2 DIMENSIONS (Inches)

Style	Frame Combinations (Input - Output)	Input Keyway*	O	T +0.000 -0.0015	Output Keyway*	Weight (lbs.)
TXMQ, TXM, TX	140TC - 56C	.188 x .094	2.06	0.625	.188 x .094	22
	140TC - 140TC	.188 x .094	2.13	0.875	.188 x .094	22

* Keyway width by depth

Style TX

SIZE 3



SIZE 3 DIMENSIONS (Inches)

Style TX

Style	Frame Combinations (Input - Output)	Input Bore	L1	LQ1	O	RQ	T +0.000 -0.0015	Input Keyway*	Output Keyway*	Weight (lbs.)
TXMQ, TXM, TX	180TC - 180TC	1.125	13.45	7.76	2.62	7.25	1.125	.250 x .125	.250 x .125 x 1.80	45
	210TC - 180TC	1.375	13.45	7.76	2.62	7.25	1.125	.312 x .156**	.250 x .125 x 1.80	45
	250TC - 180TC	1.625	14.01	8.32	2.62	7.65	1.125	.375 x .188**	.250 x .125 x 1.80	45
	180TC - 210TC	1.125	13.45	7.76	3.12	7.25	1.375	.250 x .125	.312 x .156 x 2.63	45
	210TC - 210TC	1.375	13.45	7.76	3.12	7.25	1.375	.312 x .156**	.312 x .156 x 2.63	45
	250TC - 210TC	1.625	14.01	8.32	3.12	7.65	1.375	.375 x .188**	.312 x .156 x 2.63	45

* Keyway width by depth

** Input keyway for styles TXM & TX is .250 x .125

RATIO MULTIPLIER

AVAILABLE SELECTIONS



SIZE 1 • CAST IRON

Exact Ratio	Style	Motor C-Flange	Output C-Flange	Catalog Number
2.056	TXMQ	48CZ	56C	707000L
		56C	56C	707001L
2.929	TXMQ	48CZ	56C	707002L
		56C	56C	707003L
4.000	TXMQ	48CZ	56C	707004L
		56C	56C	707005L
5.111	TXMQ	48CZ	56C	707006L
		56C	56C	707007L
7.462	TXMQ	48CZ	56C	707008L
		56C	56C	707009L

SIZE 2 • CAST IRON

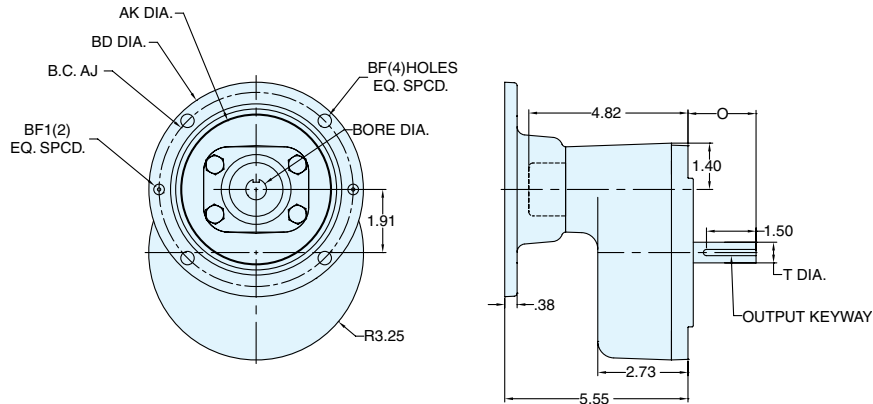
Exact Ratio	Style	Motor C-Flange	Output C-Flange	Catalog Number
2.000	TXMQ	56C	56C	707010L
		56C	143-5TC	707011L
		143-5TC	56C	707012L
		143-5TC	143-5TC	707013L
	TXM	56C	56C	707014L
		56C	143-5TC	707015L
		56C	56C	707030L
		143-5TC	56C	707032L
	TX	--	56C	707050L
		--	143-5TC	707051L
2.913	TXMQ	143-5TC	56C	707016L
		143-5TC	143-5TC	707017L
	TXM	56C	56C	707034L
		143-5TC	56C	707036L
	TX	--	56C	707052L
		--	143-5TC	707053L
4.000	TXMQ	56C	56C	707018L
		56C	143-5TC	707019L
		143-5TC	56C	707020L
	TXM	143-5TC	143-5TC	707021L
		56C	56C	707038L
		143-5TC	56C	707040L
TX	--	56C	707054L	
	--	143-5TC	707055L	
5.000	TXMQ	56C	56C	707022L
		56C	143-5TC	707023L
		143-5TC	56C	707024L
		143-5TC	143-5TC	707025L
	TXM	56C	56C	707042L
		143-5TC	56C	707044L
TX	--	56C	707056L	
	--	143-5TC	707057L	
7.182	TXMQ	56C	56C	707026L
		56C	143-5TC	707027L
		143-5TC	56C	707028L
	TXM	143-5TC	143-5TC	707029L
		56C	143-5TC	707047L
		143-5TC	56C	707048L
TX	--	56C	707049L	
	--	143-5TC	707058L	
				707059L

SIZE 3 • CAST IRON

Exact Ratio	Style	Motor C-Flange	Output C-Flange	Catalog Number
2.000	TXMQ	182-4TC	182-4TC	707060L
		182-4TC	213-5TC	707061L
		213-5TC	213-5TC	707064L
		254-6TC	213-5TC	707067L
	TXM	182-4TC	182-4TC	707090L
		213-5TC	213-5TC	707094L
TX	--	213-5TC	707097L	
			707121L	
2.964	TXMQ	182-4TC	182-4TC	707069L
		182-4TC	213-5TC	707070L
		213-5TC	182-4TC	707072L
	TXM	213-5TC	213-5TC	707073L
		182-4TC	182-4TC	707099L
		182-4TC	213-5TC	707100L
TX	213-5TC	182-4TC	707102L	
	213-5TC	213-5TC	707103L	
	--	182-4TC	707123L	
	--	213-5TC	707124L	
4.045	TXMQ	182-4TC	182-4TC	707075L
		182-4TC	213-5TC	707076L
		213-5TC	182-4TC	707078L
	TXM	213-5TC	213-5TC	707079L
		182-4TC	182-4TC	707105L
		182-4TC	213-5TC	707106L
TX	213-5TC	182-4TC	707108L	
	213-5TC	213-5TC	707109L	
	--	182-4TC	707126L	
	--	213-5TC	707127L	
5.167	TXMQ	182-4TC	182-4TC	707081L
		182-4TC	213-5TC	707082L
		213-5TC	182-4TC	707084L
	TXM	213-5TC	213-5TC	707085L
		182-4TC	182-4TC	707111L
		182-4TC	213-5TC	707112L
TX	213-5TC	182-4TC	707114L	
	213-5TC	213-5TC	707115L	
	--	182-4TC	707129L	
	--	213-5TC	707130L	
7.538	TXMQ	182-4TC	182-4TC	707087L
	TXM	182-4TC	182-4TC	707117L
	TX	--	182-4TC	707132L

Additional Capabilities

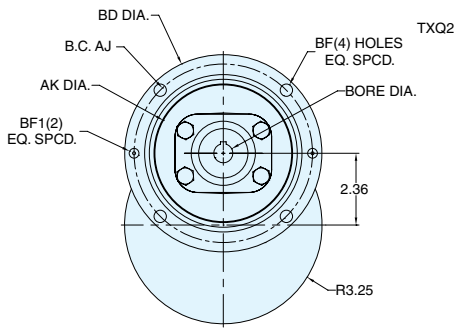
ALUMINUM SIZE 1



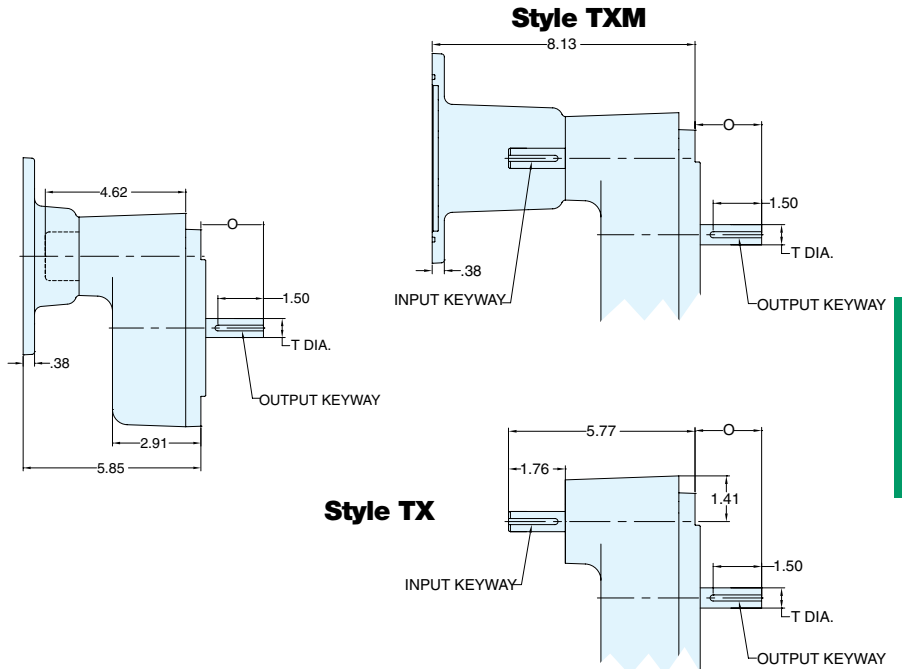
ALUMINUM SIZE 1 DIMENSIONS (Inches)

Style	Frame Combinations (Input - Output)	AJ	AK	BD	BF	BF1	O	T +0.000 -0.0015	Input Bore	Input Keyway	Output Keyway	Weight (lbs.)
TXMQ	48CZ - 56C	3.75	3.00	4.36	0.28	1/4-20 UNC	2.06	0.625	0.50	1/8 X 1/16	3/16 x 3/32	9.5
	56C - 56C	5.88	4.50	6.64	0.41	3/8-16 UNC	2.06	0.625	0.63	3/16 X 3/32	3/16 x 3/32	9.5

ALUMINUM SIZE 2



Style TXMQ



Style TX

ALUMINUM SIZE 2 DIMENSIONS (Inches)

Style	Frame Combinations (Input - Output)	AJ	AK	BD	BF	BF1	O	T +0.000 -0.0015	Input Bore	Input Keyway	Output Keyway	Weight (lbs.)
TXMQ, TXM TX	140TC-56C	5.88	4.50	6.64	0.41	3/8-16 UNC	2.06	0.625	0.63	3/16 X 3/32	3/16 x 3/32	11.5
	140TC-140TC	5.88	4.50	6.64	0.41	3/8-16 UNC	2.13	0.875	0.88	3/16 X 3/32	3/16 x 3/32	11.5

Additional Capabilities

RATIO MULTIPLIER

AVAILABLE SELECTIONS



SIZE 1 • ALUMINUM

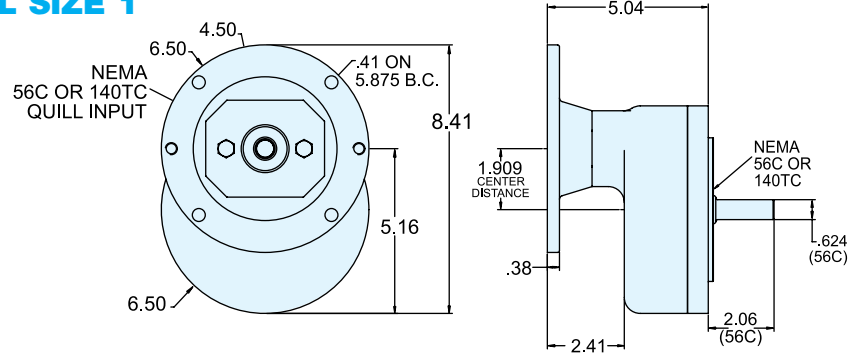
Exact Ratio	Style	Motor C-Flange	Output C-Flange	Catalog Number
2.056	TXMQ	56C	56C	EL707001
2.929	TXMQ	56C	56C	EL707003
4.000	TXMQ	56C	56C	EL707005
5.111	TXMQ	56C	56C	EL707007
7.462	TXMQ	56C	56C	EL707009

SIZE 2 • ALUMINUM

Exact Ratio	Style	Motor C-Flange	Output C-Flange	Catalog Number
2.000	TXMQ	56C	56C	EL707010
		56C	140TC	EL707011
		140TC	56C	EL707012
		140TC	140TC	EL707013
	TXM	56C	56C	EL707030
		56C	140TC	EL707031
		140TC	56C	EL707032
		140TC	140TC	EL707033
	TX	--	56C	EL707050
		--	140TC	EL707051
2.913	TXMQ	56C	56C	EL707014
		56C	140TC	EL707015
		140TC	56C	EL707016
		140TC	140TC	EL707017
	TXM	56C	56C	EL707034
		56C	140TC	EL707035
		140TC	56C	EL707036
		140TC	140TC	EL707037
	TX	--	56C	EL707052
		--	140TC	EL707053
4.000	TXMQ	56C	56C	EL707018
		56C	140TC	EL707019
		140TC	56C	EL707020
		140TC	140TC	EL707021
	TXM	56C	140TC	EL707038
		140TC	56C	EL707040
		140TC	140TC	EL707041
	TX	--	56C	EL707054
		--	140TC	EL707055
	5.000	TXMQ	56C	56C
56C			140TC	EL707023
140TC			56C	EL707024
140TC			140TC	EL707025
TXM		56C	56C	EL707042
		56C	140TC	EL707043
		140TC	56C	EL707044
		140TC	140TC	EL707045
TX		--	56C	EL707056
		--	140TC	EL707057
7.182	TXMQ	56C	56C	EL707026
		56C	140TC	EL707027
		140TC	56C	EL707028
		140TC	140TC	EL707029
	TXM	56C	56C	EL707046
		56C	140TC	EL707047
		140TC	56C	EL707048
		140TC	140TC	EL707049
	TX	--	56C	EL707058
		--	140TC	EL707059

Additional Capabilities

STAINLESS STEEL SIZE 1



STAINLESS STEEL SIZE 1 DIMENSIONS (Inches)

Style	Frame Combinations (Input - Output)	AJ	AK	BD	OD	BE	BE1	BF	Input Bore	Input Keyway**	Weight (lbs)
TXMQ	56C	5.88	4.50	5.88	6.64	0.38	N/A	0.41	0.625	3/16 x 3/32	22
	140TC	5.88	4.50	5.88	6.64	0.38	N/A	0.41	0.875	3/16 x 3/32	22

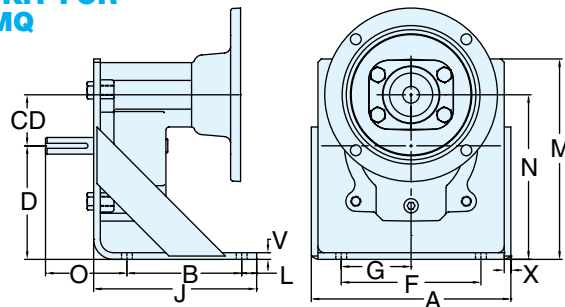
**keyway width by depth

SIZE 1 • STAINLESS STEEL

Exact Ratio	Style	Motor C-Flange	Output C-Flange	Catalog Number
2.929	TXMQ	56C	56C	707702
		56C	140TC	707707
4.000	TXMQ	56C	56C	707703
		56C	140TC	707708
		140TC	56C	707713
		140TC	140TC	707718
5.111	TXMQ	56C	56C	707704
		56C	140TC	707709
		140TC	56C	707714
		140TC	140TC	707719
7.461	TXMQ	56C	56C	707705
		56C	140TC	707710
		140TC	56C	707715
		140TC	140TC	707720

Ratio Multipliers

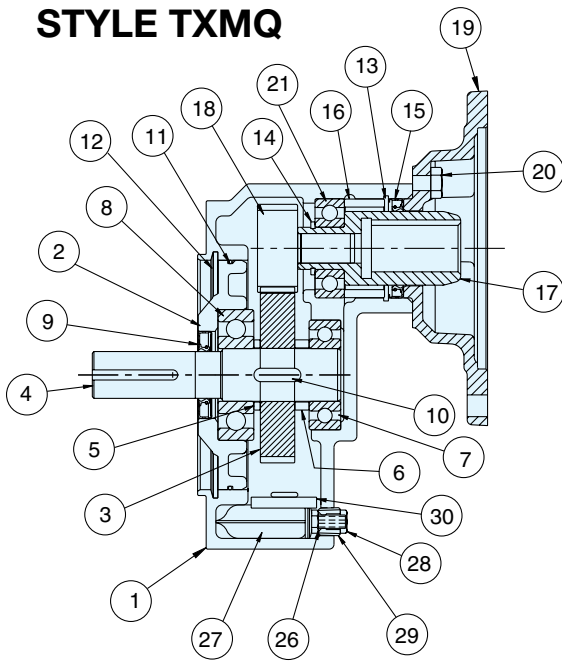
RATIO MULTIPLIER FOOT KIT FOR STYLES TBX, TBXM, TBXMQ



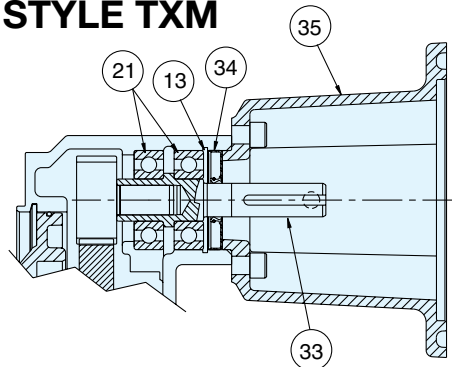
Size	Output	A	B	CD	D	F	G	H	J	X	L	M	N	O	V	X	Catalog Number	Weight (lbs)
1	56C	7.50	6.13	1.909	4.250	5.25	2.63	0.41	4.31	0.25	0.56	7.50	6.16	3.06	.25	.25	G185655	2.0
2	56C	7.50	6.13	2.362	4.250	5.25	2.63	0.41	4.31	0.25	0.56	7.50	6.16	3.06	.25	.25	G185656	2.5
	140TC	7.50	6.13	2.362	4.250	5.25	2.63	0.41	4.31	0.25	0.56	7.50	6.16	3.12	.25	.25		
3	180TC	9.50	7.38	2.874	5.000	7.00	3.50	0.53	5.25	0.25	0.63	9.44	7.88	3.88	.25	.25	G185657	3.0
	210TC	9.50	7.38	2.874	5.000	7.00	3.50	0.53	5.25	0.25	0.63	9.44	7.88	4.38	.25	.25		
	250TC	9.50	7.38	2.874	5.000	7.00	3.50	0.53	5.25	0.25	0.63	9.44	7.88	5.00	.25	.25		

NOTE: Foot kit is painted steel construction.

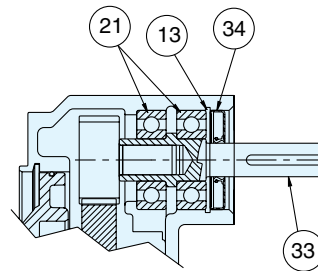
STYLE TXMQ



STYLE TXM



STYLE TX



STYLE TXQ
SIZE 1, 2 & 3 PARTS LIST;

ITEM #	DESCRIPTION
1	HOUSING
2	COVER, OUTPUT
3	GEAR, OUTPUT
4	OUTPUT SHAFT
5	SPACER, OUTPUT
6	SPACER, OUTPUT
7	BEARING, OUTPUT
8	BEARING, OUTPUT
9	SEAL, OUTPUT
10	KEY, OUTPUT
11	"O" RING, OUTPUT
12	SNAP RING, OUTPUT
13	SNAP RING, INPUT
14	SNAP RING, INPUT
15	SEAL, INPUT
16	SPACER, INPUT
17	QUILL, COUPLING
18	PINION, INPUT

ITEM #	DESCRIPTION
19	FLANGE, QUILL INPUT
20	BOLT, INPUT
21	BEARING, INPUT
26	"O" RING, ENVIROSEAL
27	ENVIROSEAL
28	NUT, INT. PRES. COMP.
29	PLUG, STEM
30	SPLASH GUARD

Grove Gear
WASHGUARD®
Style Only

STYLE TX & TXM
SIZE 2 & 3 PARTS LIST
(SOLID INPUT)

ITEM #	DESCRIPTION
33	SHAFT, INPUT
34	SEAL, INPUT
35	FLANGE, MOTOR (TXM ONLY)