

PRODUCT INFORMATION PACKET



Model No: SD2S20Z6006YEH3

Catalog No: LM29659

20HP..3600RPM.160Z.ODP.200V.3PH.60HZ.ELEVATOR.NOT.70C.1.0SF.RIGID..
Elevator Duty



Regal and Leeson are trademarks of Regal Beloit Corporation or one of its affiliated companies.

©2018 Regal Beloit Corporation, All Rights Reserved. MC017097E



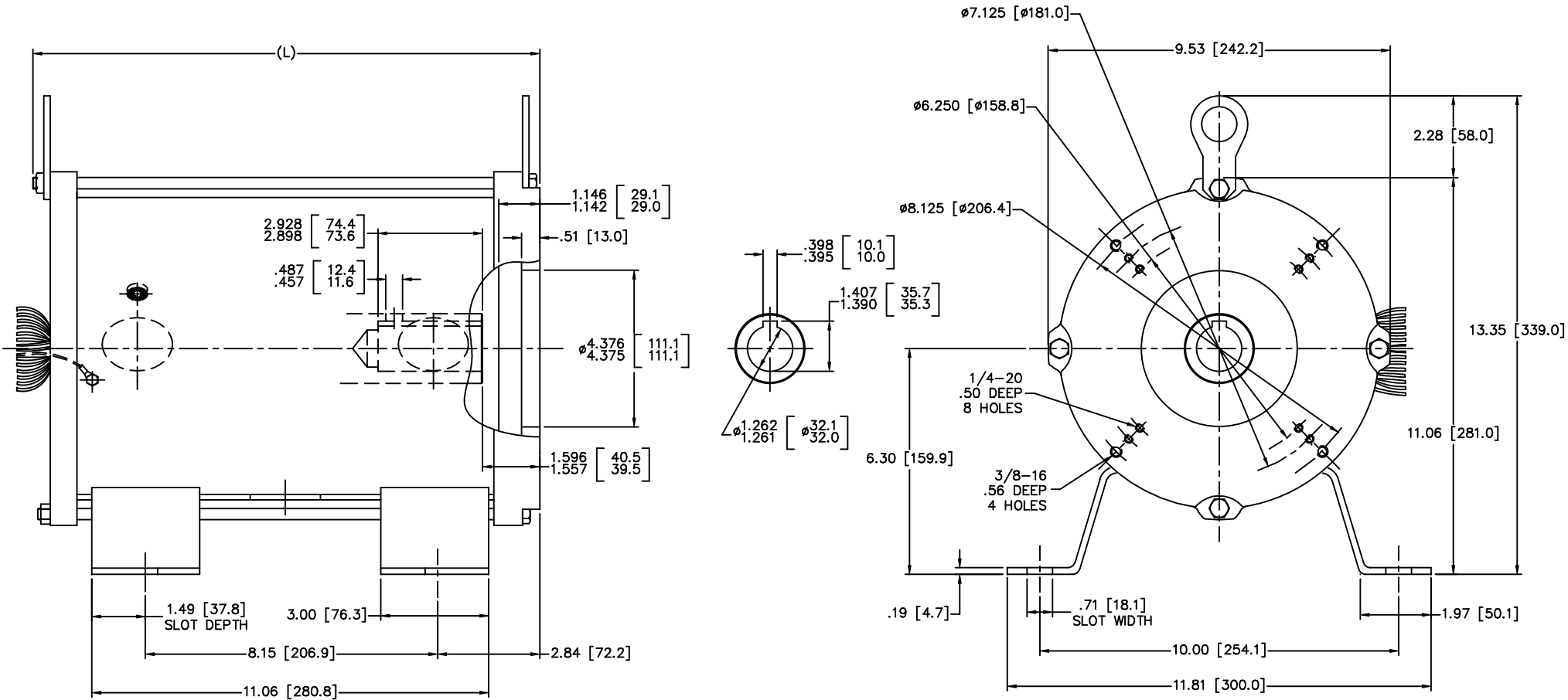


Nameplate Specifications

Output HP	20 Hp	Output KW	14.9 kW
Frequency	60 Hz	Voltage	200 V
Current	61.0 A	Speed	3495 rpm
Service Factor	1	Phase	3
Efficiency	86.5 %	Duty	30 Minute
Insulation Class	F	Design Code	NO DESIGN CODE
KVA Code	B	Frame	160Z
Enclosure	Open Enclosed	Overload Protector	No
Ambient Temperature	70 °C	Drive End Bearing Size	6307
Opp Drive End Bearing Size	6307	UL	Recognized
CSA	N	CE	N
IP Code	10		

Technical Specifications

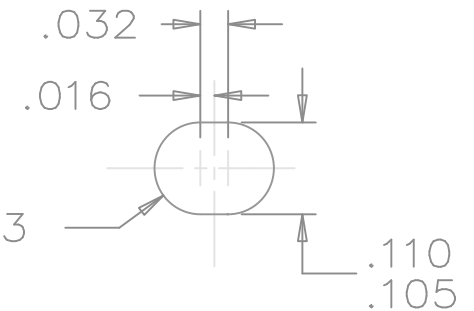
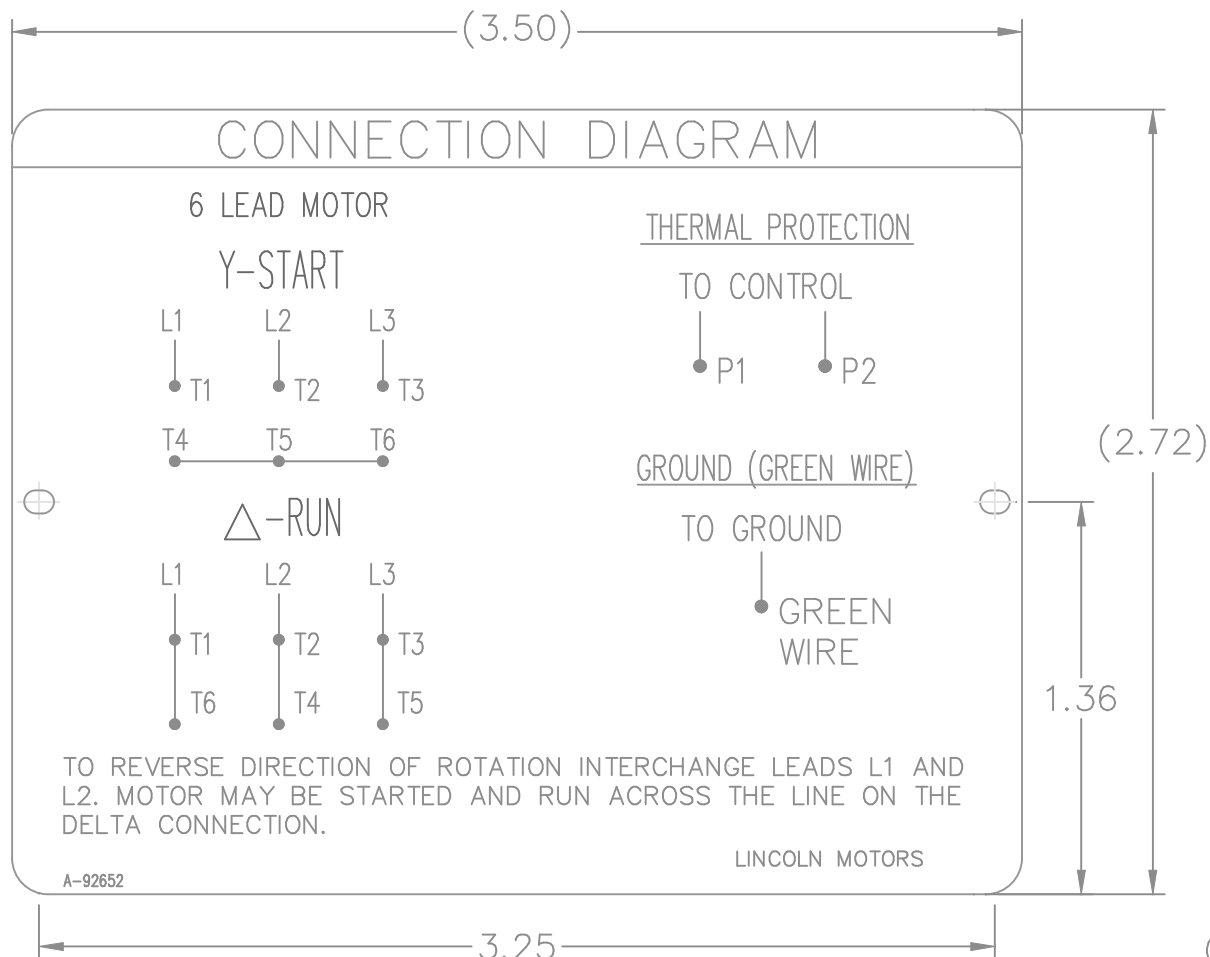
Electrical Type	Squirrel Cage Induction Run	Starting Method	Wye Start Delta Run
Poles	2	Rotation	Reversible
Mounting	Rigid base	Motor Orientation	HORIZONTAL
Drive End Bearing	BALL	Opp Drive End Bearing	BALL
Frame Material	Rolled Steel	Shaft Type	Single Special Extension
Overall Length	14.53 in	Frame Length	12.00 in
Shaft Diameter	1.250 in	Shaft Extension	2.92 in
Assembly/Box Mounting	F1/F2 CAPABLE		
Outline Drawing	0216000039	Connection Diagram	A-92652



TYPE	HP	L
160ZBS-2	15	14.53 [369.0]
160ZBS-2	20	
160ZBS-2	25	
160ZBS-2	30	
160ZBS-2	40	17.87 [454.0]
160ZBS-2	50	

(MAY NOT BE DRAWN TO SCALE)

		TOLERANCES UNLESS SPECIFIED		Lincoln MOTOR		DRAWN MSG 01-25-2007	
		DEC.	INCHES			CHK	ML 01-25-2007
		.X	±.1			APPD	GK 01-25-2007
		.XX	±.03	TITLE OUTLINE - SUBMERSIBLE ELEVATOR PUMP		SCALE	3-8
		.XXX	±.005	160ZBS FR. - 3 PHASE - DUAL DIMENSIONS		REF	
1	UPDATED TO CURRENT STANDARDS	DRS		.XXXX	±.0005	FMF	HEBEI
NO.	REVISION	BY & DATE	CHK	ANG	FINISH	PREV	
THIS DRAWING IN DESIGN AND DETAIL IS OUR PROPERTY AND MUST NOT BE USED EXCEPT IN CONNECTION WITH OUR WORK ALL RIGHTS OF DESIGN AND INVENTION ARE RESERVED THIS IS AN ELECTRONICALLY GENERATED DOCUMENT - DO NOT SCALE THIS PRINT			RFP		CAD FILE 0216000039	SIZE	DRAWING NO. PAGE OF REV.
			DIST			B	0216000039 1



NOTES:

1. MATERIAL 304 STAINLESS STEEL
2. LETTERING AND ARTWORK BLACK
3. ALL DATA MUST BE HYDRAULIC OIL RESISTANT.

				TOLERANCES UNLESS SPECIFIED			DRAWN CTO 02-18-2004						
				DEC.	INCHES		CHK	ML 02-18-2004					
				.X	±.1		APPD	MS 02-18-2004					
				.XX	±.02		SCALE	1.5=1					
				.XXX	±.005		REF						
				.XXX	±.005	TITLE	CONNECTION DIAGRAM PLATE						
				.XXXX	±.0005	MAT'L.	304 STAINLESS STEEL						
NO.	REVISION	BY & DATE	CHK	ANG	±7'30"	FINISH	PREV						
THIS DRAWING IN DESIGN AND DETAIL IS OUR PROPERTY AND MUST NOT BE USED EXCEPT IN CONNECTION WITH OUR WORK ALL RIGHTS OF DESIGN AND INVENTION ARE RESERVED THIS IS AN ELECTRONICALLY GENERATED DOCUMENT - DO NOT SCALE THIS PRINT				RFP	02-18-2004	CAD FILE	92652		SIZE	DRAWING NO.	PAGE	OF	REV.
				DIST	WA			A	92652				



CERTIFICATION DATA SHEET

P.O. BOX 8003
WAUSAU, WI 54401-8003
PH. 715-675-3311

DATA VOLTS: 460

CONN. DIAGRAM: A-92652
OUTLINE: 0216000039
WINDING: 2152205

CAT #: LM29659

NONE 3

TYPICAL MOTOR PERFORMANCE DATA

HP	KW	SYNC RPM	FL RPM	FRAME	ENCLOSURE	TYPE	KVA CODE	DESIGN	
20	14.9	3600	3515	160M	OPEN	TDR	G	B	
PH	HZ	VOLTS	AMPS	START TYPE	DUTY	INSL	S.F.	AMB	ELEV.
3	60	200	61	NYE START DELTA RUI	30 MIN	F	1.15	70	3300
F.L. EFF	86.5	3/4 LD EFF	87.5	1/2 LD EFF	86.5	GTD EFF	88.0	ELECT. TYPE	
F.L. PF	80.0	3/4 LD PF	72.5	1/2 LD PF	58.5	88.0	SQ CAGE IND RUN		
F.L. TORQUE	LR AMPS @ 460 V	L.R. TORQUE	B.D. TORQUE	F.L. RISE (°C)					
30.0 LB-FT	403	50.0 LB-FT	167%	80.0 LB-FT	267%	0			
PRESSURE @3	POWER	ROTOR WK²	MAX LOAD WK²	SAFE STALL TIME	STARTS/HOUR	MOTOR WGT			
999 DBA	1008 DBA	0.00 LB-FT²	0 LB-FT²	0 SEC.	80	0 LB.			

*** SUPPLEMENTAL INFORMATION ***

DE BRACKET TYPE	ODE BRACKET TYPE	MOUNT TYPE	MOTOR ORIENTATION	SEVERE DUTY	HAZARDOUS LOCATION	DRIIP COVER	SCREENS	PAINT
STANDARD	STANDARD	RIGID	HORIZONTAL	NO	NONE	NO	NONE	GRAY - LINCOLN
BEARINGS DE	GREASE	SHAFT TYPE	SPECIAL DE	SPECIAL ODE	SHAFT MATERIAL	FRAME MATERIAL		
BALL BALL NONE	POLYREX EM	SGL SPL EXT	ELEVATOR MOTOR SH	NONE	AISI 1045 (C-240)	ROLLED STEEL		
THERMOSTATS TSTATS (N/C)	PROTECTORS	WDG RTD's	BRG RTD's	THERMISTORS	CONTROL	SPACE HEATERS		
	NOT	NONE	NONE	NONE	FALSE	NA		
R1 (ohms/ph)	R2 (ohms/ph)	X1 (ohms/ph)	X2 (ohms/ph)	Xm (ohms/ph)	VIBRATION (in/sec)	FLOAT ODE		
0	0	0	0	0	0.150			

* NOT TESTED		INVERTER TORQUE: NONE	
		INV. HP SPEED RANGE: NONE	
		ENCODER: NONE	
		NONE	
		NONE	
		BRAKE: NONE	
		NONE	
		FT-LB: NA	
		NONE	
		NONE	
		NONE PPR	

DATE:	1/19/2018	VOLTAGE:	NA	HZ:	
UL:	VINS, CONST UL REC				

Data Sheet

Date: 1/19/2018

LM29659



Data @ 200 V

Motor Load Data

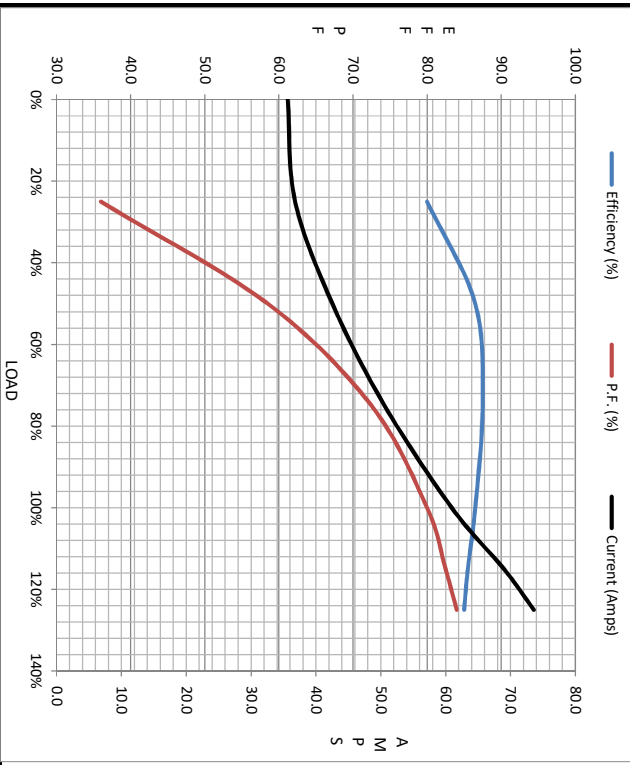
Load	0%	25%	50%	75%	100%	115%	125%	LR
Current (Amps)	35.7	36.8	42.6	50.6	61.0	69.0	73.6	403
Torque (ft-lb)	0.00	7.5	15.0	22.5	30.0	31.5	37.5	50.0
RPM	3600	3580	3560	3535	3515	3500	3485	0
Efficiency (%)			80.0	86.5	87.5	86.5	85.0	
P.F. (%)		7.0	36.0	58.5	72.5	82.5	84.0	48.0

Motor Speed Data

	LR	Pull-Up	BD	Rated	Idle
Speed (RPM)	0	1800	3000	3515	3600
Current (Amps)	403	368	265	61.0	35.7
Torque (ft-lb)	50.0	45.0	80.0	30.0	0.00

Information Block

HP	20.0			
Sync. RPM	3600			
Frame	160			
Enclosure	OPEN			
Construction	TDR			
Voltage	200 V			
Frequency	60 Hz			
Design	A			
LR Code letter	G			
Service Factor	1.15			
Temp Rise @ FL	0 °C			
Duty	30 MIN			
Ambient	40 °C			
Elevation	1,000 feet			
Rotor/Shaft wk ²	0.00 lb-Ft ²			
Ret Wdg	2152205 NONE			
Sound Pressure @ 1M	999 dB(A)			
VFD Rating	NONE			
Outline Dwg	0216000039			
Conn. Diag	A-92652			
Additional Specifications:				
0				
EQUIV CKT (OHMS / PHASE)				
R1	R2	X1	X2	Xm
0.0000	0.0000	0.0000	0.0000	0.0000



Speed - Torque Curve

