

# PRODUCT INFORMATION PACKET



Model No: SD2S50Z6006YEH3

Catalog No: LM29671

50HP..3600RPM.160Z.ODP.200V.3PH.60HZ.ELEVATOR.NOT.70C.1.0SF.RIGID..  
Elevator Duty



Regal and Leeson are trademarks of Regal Beloit Corporation or one of its affiliated companies.

©2018 Regal Beloit Corporation, All Rights Reserved. MC017097E



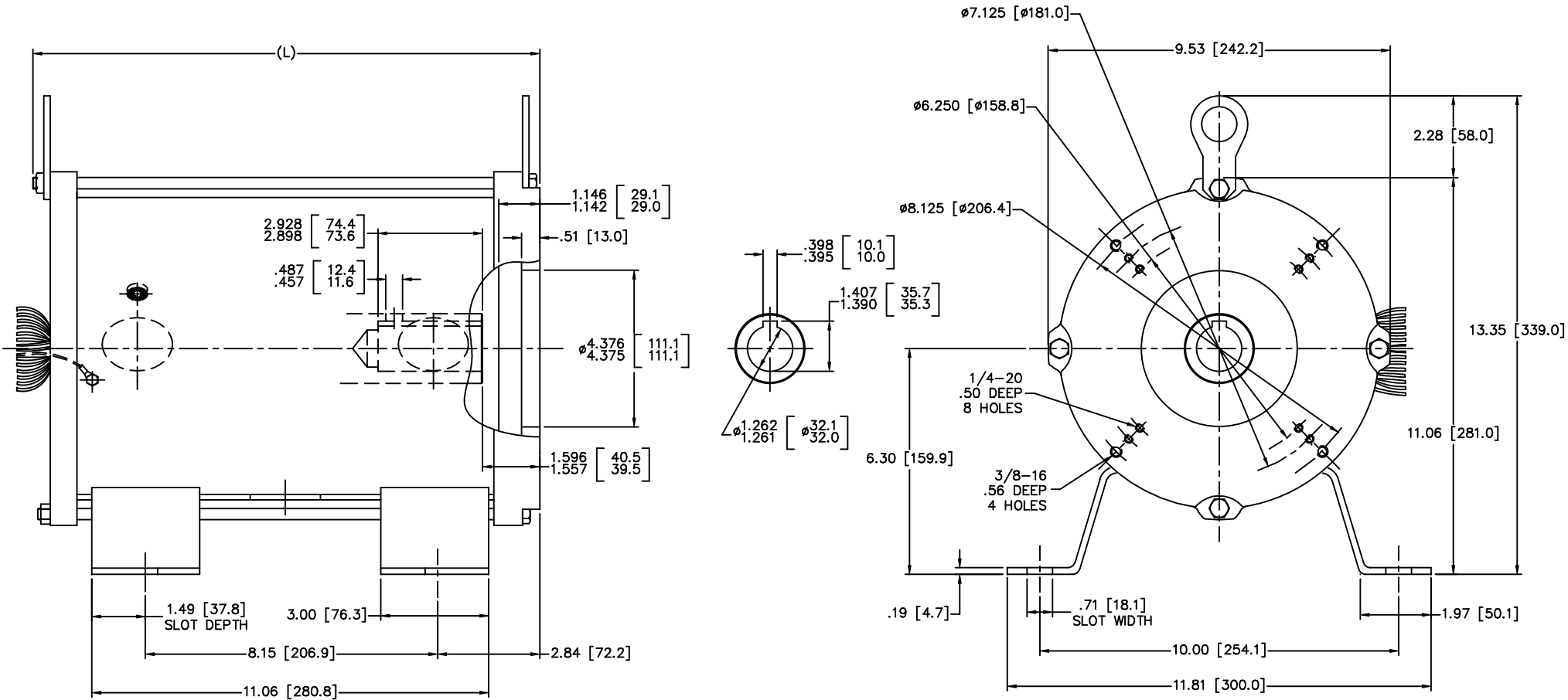


### Nameplate Specifications

Output HP	<b>50 Hp</b>	Output KW	<b>37.0 kW</b>
Frequency	<b>60 Hz</b>	Voltage	<b>200 V</b>
Current	<b>140.0 A</b>	Speed	<b>3510 rpm</b>
Service Factor	<b>1</b>	Phase	<b>3</b>
Efficiency	<b>84 %</b>	Duty	<b>30 Minute</b>
Insulation Class	<b>F</b>	Design Code	<b>NO DESIGN CODE</b>
KVA Code	<b>H</b>	Frame	<b>160Z</b>
Enclosure	<b>Open Enclosed</b>	Overload Protector	<b>No</b>
Ambient Temperature	<b>70 °C</b>	Drive End Bearing Size	<b>6307</b>
Opp Drive End Bearing Size	<b>6307</b>	UL	<b>Recognized</b>
CSA	<b>Y</b>	CE	<b>N</b>
IP Code	<b>01</b>		

### Technical Specifications

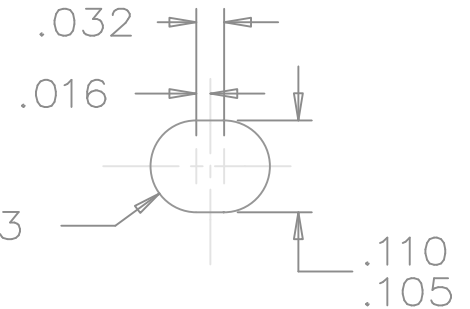
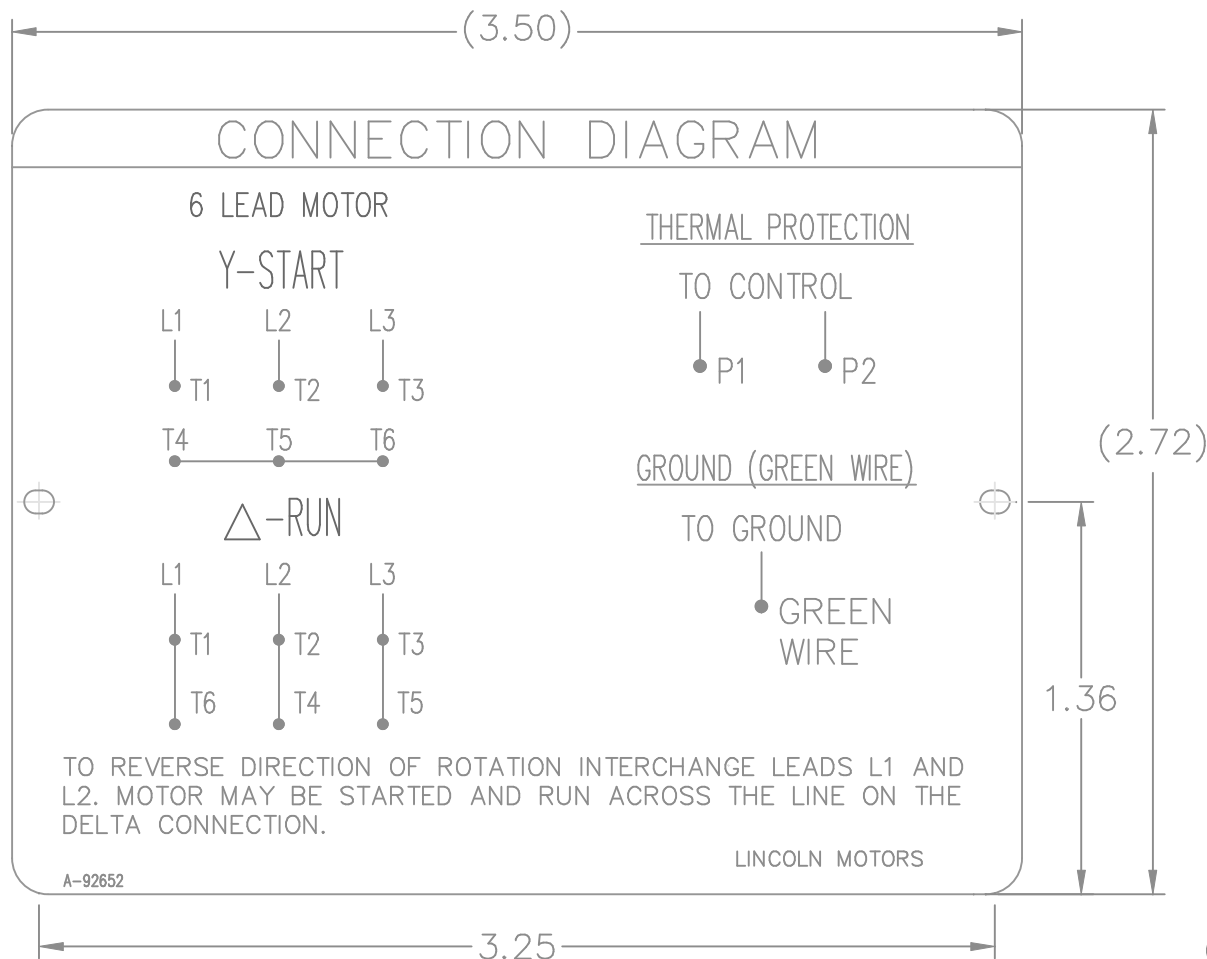
Electrical Type	<b>Squirrel Cage Induction Run</b>	Starting Method	<b>Wye Start Delta Run</b>
Poles	<b>2</b>	Rotation	<b>Reversible</b>
Mounting	<b>Rigid base</b>	Motor Orientation	<b>HORIZONTAL</b>
Drive End Bearing	<b>BALL</b>	Opp Drive End Bearing	<b>BALL</b>
Frame Material	<b>Rolled Steel</b>	Shaft Type	<b>Single Special Extension</b>
Overall Length	<b>14.53 in</b>	Frame Length	<b>15.35 in</b>
Shaft Diameter	<b>1.250 in</b>	Shaft Extension	<b>2.92 in</b>
Assembly/Box Mounting	<b>F1/F2 CAPABLE</b>		
Outline Drawing	<b>0216000039</b>	Connection Diagram	<b>A-92652</b>



TYPE	HP	L
160ZBS-2	15	14.53 [369.0]
160ZBS-2	20	
160ZBS-2	25	
160ZBS-2	30	
160ZBS-2	40	17.87 [454.0]
160ZBS-2	50	

(MAY NOT BE DRAWN TO SCALE)

		TOLERANCES UNLESS SPECIFIED		Lincoln MOTOR		DRAWN MSG 01-25-2007	
		DEC.	INCHES			CHK	ML 01-25-2007
		.X	±.1			APPD	GK 01-25-2007
		.XX	±.03	TITLE OUTLINE - SUBMERSIBLE ELEVATOR PUMP		SCALE 3-8	
		.XXX	±.005	160ZBS FR. - 3 PHASE - DUAL DIMENSIONS		REF	
1	UPDATED TO CURRENT STANDARDS	DRS	.XXXX	±.0005	MATL	FMF	HEBEI
NO.	REVISION	BY & DATE	CHK	ANG	FINISH	PREV	
THIS DRAWING IN DESIGN AND DETAIL IS OUR PROPERTY AND MUST NOT BE USED EXCEPT IN CONNECTION WITH OUR WORK ALL RIGHTS OF DESIGN AND INVENTION ARE RESERVED THIS IS AN ELECTRONICALLY GENERATED DOCUMENT - DO NOT SCALE THIS PRINT			RFP		CAD FILE 0216000039	SIZE B	DRAWING NO. 0216000039
			DIST			PAGE OF	REV. 1



NOTES:

1. MATERIAL 304 STAINLESS STEEL
2. LETTERING AND ARTWORK BLACK
3. ALL DATA MUST BE HYDRAULIC OIL RESISTANT.

			TOLERANCES UNLESS SPECIFIED			DRAWN CTO 02-18-2004					
			DEC.	INCHES		CHK	ML	02-18-2004			
			.X	±.1			MS	02-18-2004	SCALE	1.5=1	
			.XX	±.02		TITLE CONNECTION DIAGRAM PLATE					
			.XXX	±.005		REF					
			.XXXX	±.0005	MAT'L. 304 STAINLESS STEEL						
NO.	REVISION	BY & DATE	CHK	ANG	±7'30"	FINISH	PREV				
THIS DRAWING IN DESIGN AND DETAIL IS OUR PROPERTY AND MUST NOT BE USED EXCEPT IN CONNECTION WITH OUR WORK ALL RIGHTS OF DESIGN AND INVENTION ARE RESERVED THIS IS AN ELECTRONICALLY GENERATED DOCUMENT - DO NOT SCALE THIS PRINT			RFP	02-18-2004	CAD FILE	92652	SIZE	DRAWING NO.	PAGE	OF	REV.
			DIST	WA			A	92652			



P.O. BOX 8003  
WAUSAU, WI 54401-8003  
PH. 715-675-3311

DATA VOLTS: 460

CERTIFICATION DATA SHEET

CONN. DIAGRAM: A-92652  
OUTLINE: 0216000039  
WINDING: 2152209

CAT #: LM29671

NONE 3

TYPICAL MOTOR PERFORMANCE DATA

HP	KW	SYNC RPM	FL RPM	FRAME	ENCLOSURE	TYPE	KVA CODE	DESIGN	
50	37	3600	3510	160M	OPEN	TDR	H	B	
PH	HZ	VOLTS	AMPS	START TYPE	DUTY	INSL	S.F.	AMB	ELEV.
3	60	200	133	NYE START DELTA RUI	30 MIN	F	1.15	70	3300
F.L. EFF	89.5	3/4 LD EFF	91.0	1/2 LD EFF	91.7	GTD EFF	ELECT. TYPE		
F.L. PF	90.0	3/4 LD PF	88.0	1/2 LD PF	82.5	81.5	SQ CAGE IND RUN		
F.L. TORQUE	LR AMPS @ 460 V	L.R. TORQUE	B.D. TORQUE	F.L. RISE (°C)					
75.0 LB-FT	633	200 LB-FT	267%	150 LB-FT	200%	0			
PRESSURE @3	POWER	ROTOR WK²	MAX. LOAD WK²	SAFE STALL TIME	STARTS/HOUR	MOTOR WGT			
999 DBA	1008 DBA	0.00 LB-FT²	0 LB-FT²	0 SEC.	80	0 LB.			

\*\*\* SUPPLEMENTAL INFORMATION \*\*\*

DE BRACKET TYPE	ODE BRACKET TYPE	MOUNT TYPE	MOTOR ORIENTATION	SEVERE DUTY	HAZARDOUS LOCATION	DRIIP COVER	SCREENS	PAINT
STANDARD	STANDARD	RIGID	HORIZONTAL	NO	NONE	NO	NONE	GRAY - LINCOLN
BEARINGS	GREASE	SHAFT TYPE	SPECIAL DE	SPECIAL ODE	SHAFT	MATERIAL	FRAME MATERIAL	
DE ODE	POLYREX EM	SGL SPL EXT	ELEVATOR MOTOR SH	NONE	SAISI 1045 (C-240)	ROLLED STEEL		
BALL BALL								
NONE NONE								
THERMOSTATS	PROTECTORS	WDG RTD's	BRG RTD's	THERMISTORS	CONTROL	SPACE HEATERS		
TSTATS (N/C)	NOT	NONE	NONE	NONE	FALSE	NA		
R1 (ohms/ph)	R2 (ohms/ph)	X1 (ohms/ph)	X2 (ohms/ph)	Xm (ohms/ph)	VIBRATION (in/sec)	FLOAT		
0	0	0	0	0	0.150	ODE		

* N O T E S *		INVERTER TORQUE: NONE	
		INV. HP SPEED RANGE: NONE	
		ENCODER: NONE	
		BRAKE: NONE	
		FT-LB: NONE	
		VOLTAGE: NA	
		NONE PPR	

DATE:	1/24/2018	UL: VINS, CONST UL REC	HZ:
-------	-----------	------------------------	-----

Data Sheet

Date: 1/24/2018

LM29671



Data @ 200 V

Motor Load Data						LR	
Load	0%	25%	50%	75%	100%	115%	125%
Current (Amps)	35.7	47.2	71.3	101	133	156	170
Torque (ft-lb)	0.00	18.5	37.0	56.0	75.0	87.0	95.0
RPM	3600	3580	3560	3535	3510	3490	3480
Efficiency (%)		89.5	91.7	91.0	89.5	87.5	87.5
P.F. (%)	7.0	63.5	82.5	88.0	90.0	90.0	90.5

Motor Speed Data						Information Block			
Speed (RPM)	LR	Pull-Up	BD	Rated	Idle	HP	Sync. RPM	Frame	Enclosure
0	1800	3312	3510	3600	3600	50.0	3600	160	OPEN
Current (Amps)	633	863	978	133	35.7				TDR
Torque (ft-lb)	200	135	150	75.0	0.00				200
									Voltage
									200
									Frequency
									60
									Design
									B
									LR Code letter
									H
									Service Factor
									1.15
									Temp Rise @ FL
									0
									Duty
									30 MIN
									Ambient
									40
									Elevation
									1,000
									feet
									Rotor/Shaft wk <sup>2</sup>
									0.00
									Rel Wdg
									2152209
									NONE
									Sound Pressure @ 1M
									999
									dB(A)
									VFD Rating
									NONE
									Outline Dwg
									0216000039
									Conn. Diag
									A-92652
									Additional Specifications:
									0
									EQUIV CKT (OHMS / PHASE)
									R1
									R2
									X1
									X2
									Xm
									0.0000

