

**Climax Metal Products Company**

8141 Tyler Boulevard

Mentor, Ohio 44060

USA

Toll free: 800-542-6552

Phone: 440-585-0300

Fax: 800-860-5553

Email: sales@climaxmetal.comWebsite: www.climaxmetal.com

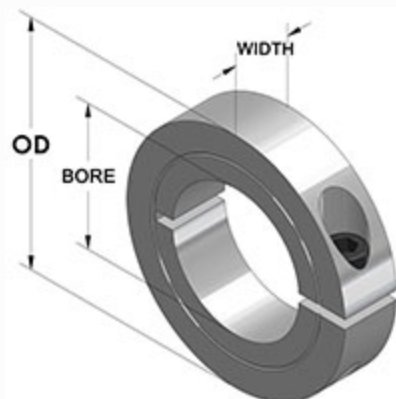
ITEM # H1C-050-A, ONE-PIECE CLAMPING COLLAR RECESSED SCREW H1C-SERIES

Aluminum One-Piece Clamping Collar - Recessed Screw Head. Recessed Screw Head provides an outside surface free of major projections for safety. Design fully engages the shaft without marring. Greater axial holding power than set screw collars. Effective on hard & soft shafts.

[Drawing](#) | [Specifications](#) |

Drawing

Dimensional Drawing



One-Piece Clamping Collar Recessed Screw

Specifications

Bore	1/2 in
OD	1 1/4 in
Width	3/8 in
Style	One-Piece Clamp
Material	Aluminum, ASTM B211
Finish	Plain
Clamp Screw	Hex Socket Cap Screw, 3A Thread, Steel, ASTM A574: 8-32 x 1/2
Recessed Screw	Yes
Approximate Weight	0.52 oz
UPC Code	044861180501
Downloads	Catalog Page

Competitor Part Number

Alternate Part Number	0403364 101828436 1570542 175D03038 1A008 213938 213939 213940 3830167 CASC50 H1C050A
------------------------------	---