


Climax Metal Products Company

8141 Tyler Boulevard

Mentor, Ohio 44060

USA

Toll free: 800-542-6552

Phone: 440-585-0300

Fax: 800-860-5553

 Email: sales@climaxmetal.com

 Website: www.climaxmetal.com

ITEM # H1C-193-A, ONE-PIECE CLAMPING COLLAR RECESSED SCREW H1C-SERIES

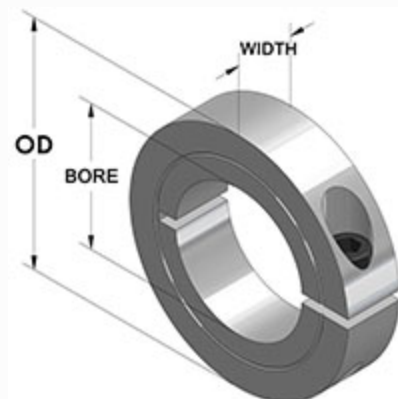
Aluminum One-Piece Clamping Collar - Recessed Screw Head. Recessed Screw Head provides an outside surface free of major projections for safety. Design fully engages the shaft without marring. Greater axial holding power than set screw collars. Effective on hard & soft shafts.



[Drawing](#) | [Specifications](#) |

Drawing

Dimensional Drawing



One-Piece Clamping Collar Recessed Screw

Specifications

Bore	1 15/16 in
OD	3 1/4 in
Width	5/8 in
Style	One-Piece Clamp
Material	Aluminum, ASTM B211
Finish	Plain
Clamp Screw	Hex Socket Cap Screw, 3A Thread, Steel, ASTM A574: 5/16-24 x 1
Recessed Screw	Yes
Approximate Weight	4.85 oz
UPC Code	044861993088
Downloads	Catalog Page

Competitor Part Number

Alternate Part Number	0404391 101946222 175D03176 1A115 214148 214149 2774587 H1C193A
------------------------------	--