



Climax Metal Products Company

8141 Tyler Boulevard
Mentor, Ohio 44060
USA

Toll free: 800-542-6552

Phone: 440-585-0300

Fax: 800-860-5553

Email: sales@climaxmetal.com

Website: www.climaxmetal.com

ITEM # 2ISCC-062-062, TWO-PIECE INDUSTRY STANDARD CLAMPING COUPLINGS 2ISCC-SERIES

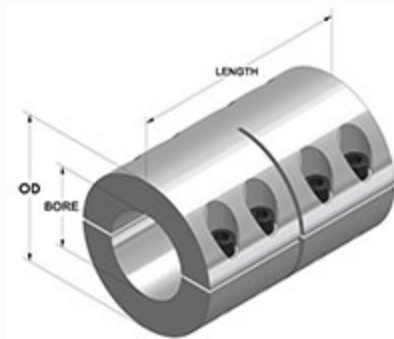
Black Oxide Steel Two-Piece Industry Standard Clamping Coupling. High axial load & torque capacity. Does not mar the shaft.



[Drawing](#) | [Specifications](#) |

Drawing

Dimensional Drawing



Two-Piece Industry Standard Clamping Coupling

Specifications

Bore	5/8 in
2nd Bore	5/8 in
OD	1 5/16 in
Length	2 in
Style	Two-Piece Clamp
Material	Steel, ASTM A108
Finish	Black Oxide
Clamp Screw	Hex Socket Cap Screw, 3A Thread, Steel, ASTM A574: 10-32 x 1/2
Recessed Screw	No
Approximate Weight	8.50 oz
UPC Code	044861051160
Downloads	Catalog Page

Competitor Part Number

Alternate Part Number

0403828
 101782756
 1571397
 175D50506
 2338151
 2393014
 2APV1
 2ISCC062062
 3940977
 60845K34
 75241844
 7L010010F
 CC-507
 MA1571397
 SPX1010F
 SPX-10-10-F