

**Climax Metal Products Company**

8141 Tyler Boulevard  
Mentor, Ohio 44060  
USA

Toll free: 800-542-6552

Phone: 440-585-0300

Fax: 800-860-5553

Email: [sales@climaxmetal.com](mailto:sales@climaxmetal.com)

Website: [www.climaxmetal.com](http://www.climaxmetal.com)

## ITEM # C123E-237, SERIES C123 LOCKING ASSEMBLY

Single-taper, self-centering design without mounting flange for use in through-bored components. Mounted component moves axially during installation.

[View Catalog Page](#)



[Hub OD Calculator](#) | [Drawing](#) | [Specifications](#) |

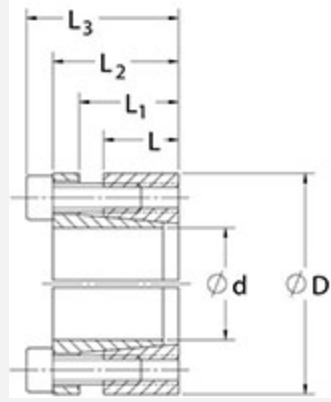
Hub OD Calculator

Calculator

[Climax Hub OD Calculator](#)

Drawing

## Dimensional Drawing



Locking Assembly

## Specifications

|                                     |              |
|-------------------------------------|--------------|
| <b>Shaft Size</b>                   | 2 3/8 in     |
| <b>d</b>                            | 2.375 in     |
| <b>D</b>                            | 3.543 in     |
| <b>L</b>                            | 0.787 in     |
| <b>L1</b>                           | 1.043 in     |
| <b>L2</b>                           | 1.358 in     |
| <b>L3</b>                           | 1.673 in     |
| <b>M<sub>t</sub></b>                | 1,833 ft-lbs |
| <b>F<sub>ax</sub></b>               | 18,521 lbs.F |
| <b>P<sub>s</sub></b>                | 26,270 psi   |
| <b>P<sub>h</sub></b>                | 17,608 psi   |
| <b>D<sub>N</sub><sup>1</sup></b>    | 5.357 in     |
| <b>Locking Screws Quantity</b>      | 8            |
| <b>Locking Screws Size</b>          | M8 x 25      |
| <b>M<sub>a</sub>-Locking Screws</b> | 26 ft-lbs    |
| <b>Hub Machining Tolerance</b>      | +0.002 in    |

**Shaft Machining Tolerance**      -.002 in

**Weight**      1.90 lb

**UPC Code**      044861074145

[Catalog Page](#)

[Installation Demonstration \(Video\)](#)

**Downloads**

[Installation & Removal Instructions](#)

[Keyless Locking Technical Information](#)

**Competitor Part Number**

**Alternate Part Number**

101936563  
 2735098  
 7003 ECOLOC 2.375 x 3.543  
 PL2-3/8 FL  
 SLD 1350 IN 2-3/8  
 SLD 1850 IN 2-3/8  
 T302206  
 TLK 132 2 3/8

<sup>1</sup> Minimum hub outside diameter based on a Pressure reduction Factor of C=1.0 and hub material with tensile yield point = 45,000 psi. For details see Hub Strength in Technical Information.