



Climax Metal Products Company

8141 Tyler Boulevard
Mentor, Ohio 44060
USA

Toll free: 800-542-6552

Phone: 440-585-0300

Fax: 800-860-5553

Email: sales@climaxmetal.com

Website: www.climaxmetal.com

ITEM # 2ISCC-137-137, TWO-PIECE INDUSTRY STANDARD CLAMPING COUPLINGS 2ISCC-SERIES

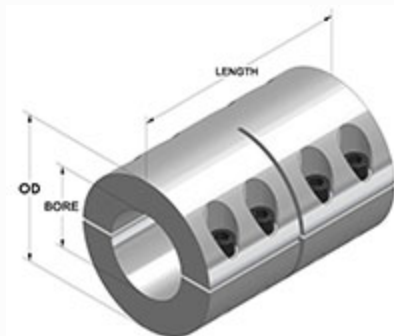
Black Oxide Steel Two-Piece Industry Standard Clamping Coupling. High axial load & torque capacity. Does not mar the shaft.



[Drawing](#) | [Specifications](#) |

Drawing

Dimensional Drawing



Two-Piece Industry Standard Clamping Coupling

Specifications

Bore	1 3/8 in
2nd Bore	1 3/8 in
OD	2 1/2 in
Length	3 5/8 in
Style	Two-Piece Clamp
Material	Steel, ASTM A108
Finish	Black Oxide
Clamp Screw	Hex Socket Cap Screw, 3A Thread, Steel, ASTM A574: 5/16-24 x 1
Recessed Screw	No
Approximate Weight	37.00 oz
UPC Code	044861415733
Downloads	Catalog Page

Competitor Part Number -

Alternate Part Number

0403848
 101782166
 1571414
 175D50565
 2338174
 2393073
 2AVK2
 2ISCC137137
 3940999
 60845K921
 7L106106F
 MA1571414
 SPX2222F
 SPX-22-22-F