

DESCRIPTION

The Model 7624-A regulator assembly is a “four-way”, self-relieving air regulator for use in a variety of pneumatically operated systems where proper equipment performance and protection from excessive pressures are needed.

The Model 7624-A regulator assembly consists of a regulator with an air pressure gauge connected to it.

SPECIFICATIONS

INLET AIR PRESSURE 300 psi (max)

REGULATED DISCHARGE PRESSURE . 0-125 psi

PORTS:

Inlet: 1/4 NPTF (f)

Outlet: 1/4 NPTF (f)

Gauge: (2) 1/8" NPTF (f)

NOTE: A 1/8" pipe plug is shipped loose to plug the unused hole in the regulator.

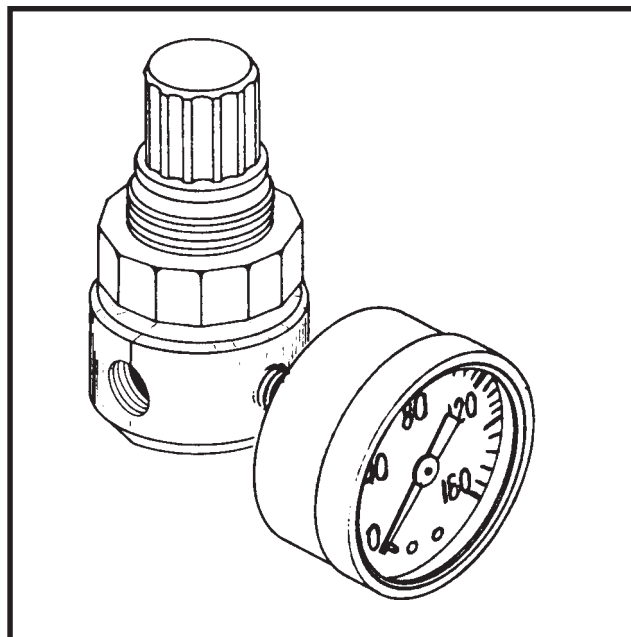


Figure 1: Model 7624-A Air-Pressure Regulator with Gauge

INSTALLATION

Before installing, blow out pipe line to remove scale and other foreign matter. Threads are DRYSEAL, which normally do not require pipe compound. If pipe compound is needed, apply sparingly to male threads only.

Install regulator in pipe line so that air will flow in direction of arrow stamped on body. Install as near as possible to equipment serviced.

PRESSURE ADJUSTMENT

To adjust pressure settings: Pull upward on the adjusting knob to unlock. Turn the knob clockwise to increase pressure setting and counterclockwise to lower pressure. When desired pressure is obtained, push the adjusting knob downward. This locks in the setting.

NOTE: The air-pressure gauge will display the air pressure.

MAINTENANCE

If the air supply is kept clean, the regulator should provide long periods of uninterrupted service. Erratic regulator operation or loss of regulation is most always due to dirt in the disc area.

NOTE: To clean, Regulator need not be removed from line. Shut off air supply and relieve line pressure. Refer to drawing as a guide to disassembly and reassembly. Clean parts with denatured alcohol and blow out body with compressed air.

When reassembling, make sure seat is firmly in place and that disc stem fits into center hole of diaphragm assembly.

If diaphragm assembly is replaced, make sure disc stem fits into diaphragm center hole. Tighten spring cage slightly more than hand tight (60 inch pounds torque).

FOR FURTHER SERVICE, CONTACT YOUR LOCAL ALEMITE DISTRIBUTION CENTER



ALEMITE CORPORATION
4701 PARK RD CHARLOTTE NC 28209-9967

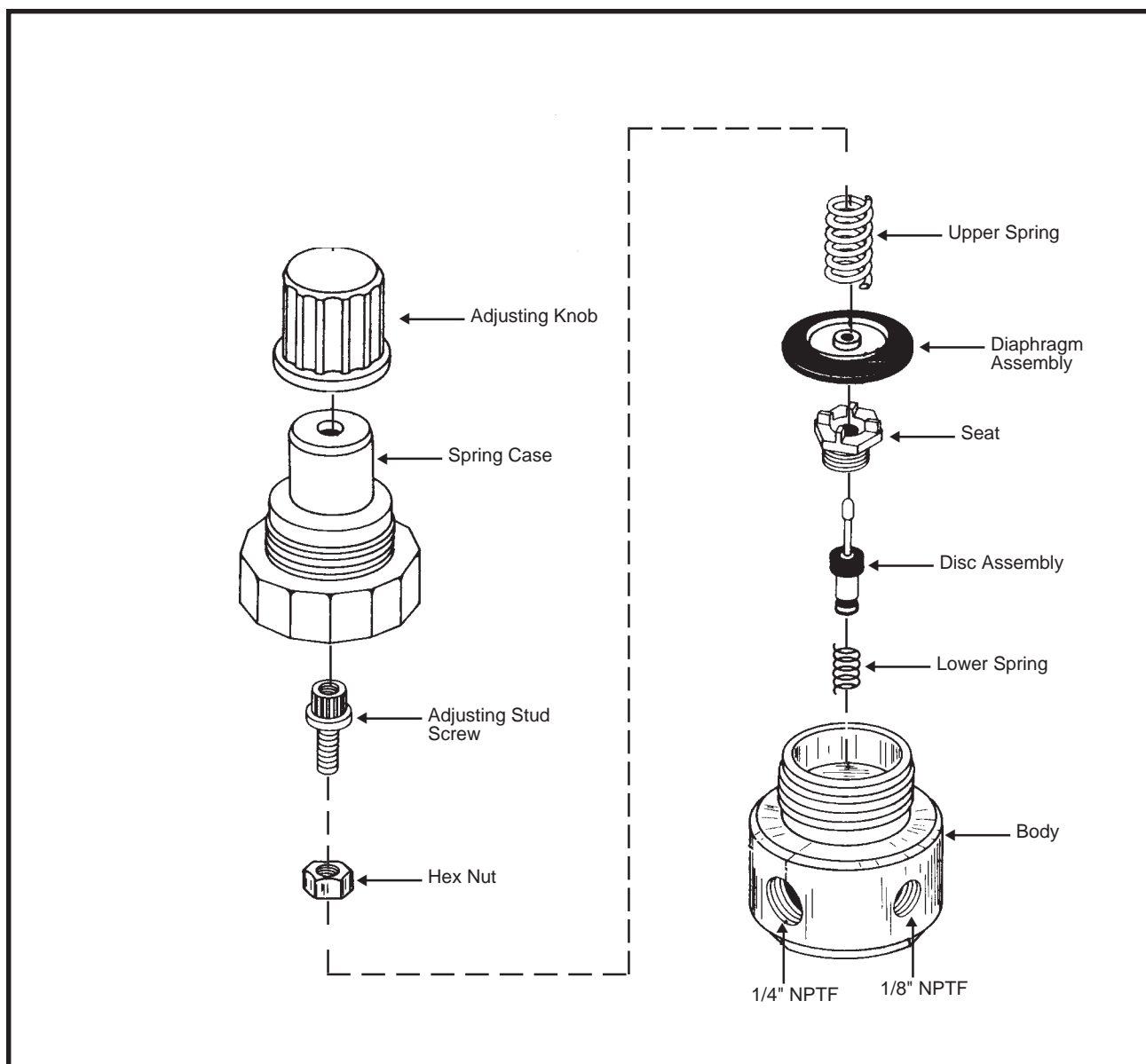


Figure 2: Components of the Model 7624-A Air-Pressure Regulator

NOTE: The parts listed in this instruction sheet are for reference identification in the instructions and illustrations. Some of them are not available as separate parts and these are noted in the parts list. Standard items such as nuts, bolts, etc. should be purchased at a hardware store. Refer to the current parts price list and bulletins before ordering parts, and always give the part number, quantity, description and model where used when ordering parts. Parts availability and prices are subject to change without notice.

PARTS CHANGES SINCE LAST PRINTING

Removed Locking Screw