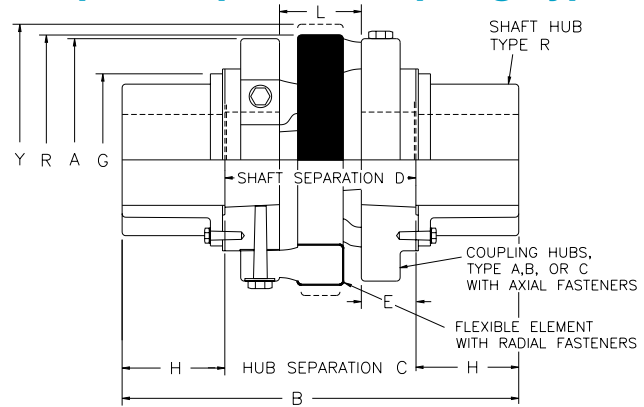


Drop-Out Spacer Coupling Type DO

Wherever spacer type couplings are used for motor driven back-pull-out pumps, AVS Pumps, Process Pumps and any application for a Spacer Type coupling. Over 117 shaft separation combinations are available using standard components.

The ELASTOMERIC™ Drop-out coupling provides for easy removal of the pump's back-pull-out section keeping routine pump maintenance and down-time to a minimum.

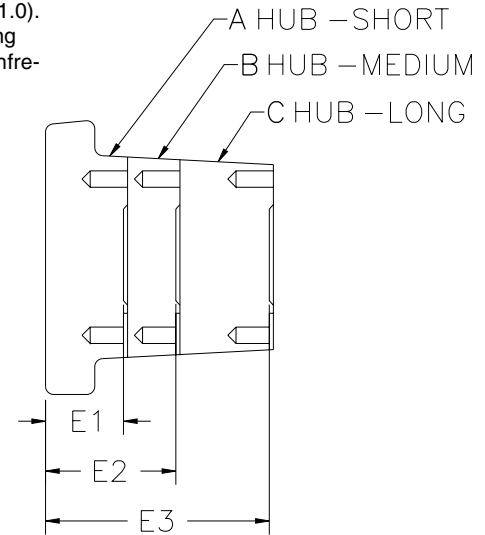
Upon removal of a few axial fasteners, the flexible coupling center section is easily inserted, or removed to gain pump access.



Size	Ratings Centrifugal Pump Service (1)		Max. RPM	Max. Offset	Dimensions						Rough Bore
	HP/100 RPM (2)	Torque Lb.-In.			A	G	H	L	R	Y	
20	.334	217	4100	.029	3 11/16	3 1/8	1 3/8	1	4	4 1/2	5/8
30	.664	418	4100	.032	4 3/8	3 3/8	1 5/8	1 1/2	4 5/8	5 1/2	5/8
40	1.15	725	4100	.034	5 3/8	3 11/16	1 3/4	1 5/8	5 11/16	6 5/8	5/8
50	2.00	1260	4100	.036	6 1/16	4 7/16	2 3/8	2 1/8	6 3/4	7 3/8	5/8
60	3.05	1920	4100	.038	7	4 15/16	2 5/8	2 1/8	7 5/8	8 3/8	1
70	7.20	4540	3600	.042	8	5 11/16	3	2 3/8	8 11/16	9 3/4	1
80	13.0	8190	2800	.056	9 7/16	7	3 7/8	3	10 1/2	11 3/4	1 1/4
90	22.6	14200	2000	.079	12 1/8	8 1/4	4 1/4	4 1/8	13 1/16	14 3/8	1 1/2

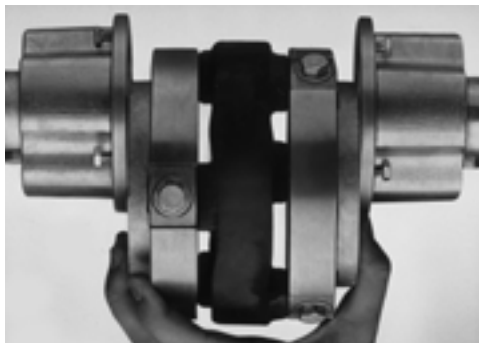
(1) Ratings are for motor driven centrifugal pump and blower service (service factor of 1.0). For other applications, refer to pages 98 & 99 for appropriate service factors and coupling size selection data. Couplings will transmit peak loads of 3 times these values if infrequently applied (not to exceed once per hour).

(2) $HP/100rpm = \frac{HP \text{ to be transmitted} \times 100}{\text{Coupling rpm}}$



Coupling Size	R Hub			Element W/ Fastener	
	No Bore		Finish Bore ^① Part No.	Part No.	Wt.
	Part No.	Wt.			
20	20 RHUB	1	20 RHUB FB	20 ELEMENT	1
30	30 RHUB	1	30 RHUB FB	30 ELEMENT	1
40	40 RHUB	1	40 RHUB FB	40 ELEMENT	1
50	50 RHUB	2	50 RHUB FB	50 ELEMENT	2
60	60 RHUB	3	60 RHUB FB	60 ELEMENT	3
70	70 RHUB	5	70 RHUB FB	70 ELEMENT	5
80	80 RHUB	9	80 RHUB FB	80 ELEMENT	9
90	90 RHUB	15	90 RHUB FB	90 ELEMENT	16

NOTE: ^① Finish bores and keyways per AGMA 9002-A86 commercial standard tolerances. Each clearance bore includes one set screw over keyway.



The ELASTOMERIC™ Drop Out Spacer Coupling center section is easily installed as a preassembled unit, or as lightweight component parts. For pump or seal maintenance, the "drop out" center section is easily removed for fast pump access.

Coupling Hubs Type A, B and C

Size	E DIMENSION			AXIAL FASTENERS	
	A Hub	B Hub	C Hub	No. Per Hub	Size
	E1	E2	E3		
20	—	1 1/4	2 3/4	4	1/4-20
30	—	1	2 1/2	4	1/4-20
40	1	1 11/16	3 15/16	4	1/4-20
50	1	1 7/16	3 11/16	4	1/4-20
60	1	1 7/16	3 11/16	4	5/16-18
70	1	1 5/16	3 9/16	4	3/8-16
80	1 7/32	2 1/8	4 5/8	6	1/2-13
90	—	1 9/16	4 1/16	6	5/8-11