



SS56C1/2M-4-RB

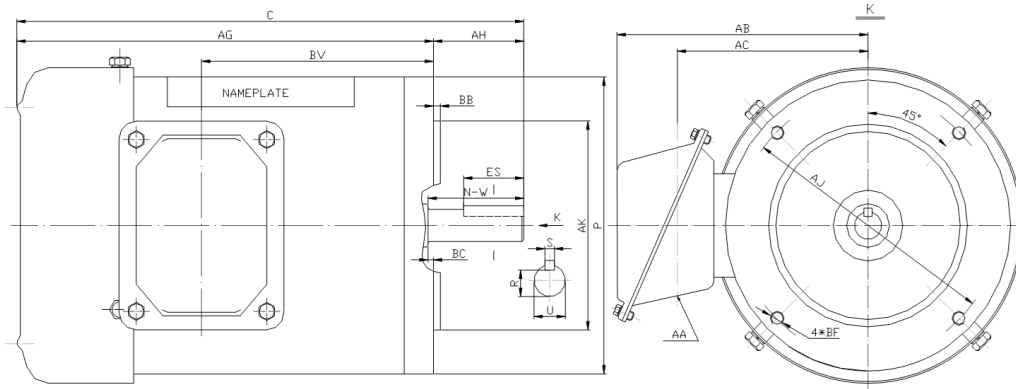
WASHDOWN DUTY MOTOR

HIGH EFFICIENCY / EISA COMPLIANT

STAINLESS STEEL CONSTRUCTION - ROUND BODY (C-FLANGE FOOTLESS)

TOTALLY ENCLOSED FAN COOLED - IP66 CONSTRUCTION

INVERTER DUTY 10:1 CT; 20:1 VT - NEMA MG1 PART 31



DIMENSIONS

| HP | RPM | Frame | MOUNTING | | | | | | | | | |
|-----|------|-------|----------|-----|------|-------|-----|------|-----|------|-------|----------|
| | | | C | P | AH | AJ | AK | AG | BA | BB | BC | BF |
| 1/2 | 1800 | 56C | 11.59 | 6.5 | 2.06 | 5.875 | 4.5 | 9.53 | N/A | 0.16 | -0.19 | 4*3/8-16 |

| Shaft Extension, Key Set | | | | | Conduit Box | | | |
|--------------------------|-------|-------|------|------|-------------|------|------|-----|
| U | R | S | ES | N-W | AA | AB | AC | BV |
| 0.625 | 0.517 | 0.188 | 1.41 | 1.88 | 0.86 | 5.75 | 4.25 | 5.3 |

| Bearings | | Mount |
|----------|----------|-------|
| DE | ODE | |
| 6205-2RS | 6205-2RS | F1 |

BEARING LUBRICATION: The bearings come lubricated with Mobil Polyrex EM Polyurea Grease.





SS56C1/2M-4-RB

WASHDOWN DUTY MOTOR
HIGH EFFICIENCY / EISA COMPLIANT
STAINLESS STEEL CONSTRUCTION - ROUND BODY (C-FLANGE FOOTLESS)
TOTALLY ENCLOSED FAN COOLED - IP66 CONSTRUCTION
INVERTER DUTY 10:1 CT; 20:1 VT - NEMA MG1 PART 31

PERFORMANCE DATA

| HP | RPM | Frame | Voltage | Frequency (Hz) | Full Load S.F. | Insulation Class | NEMA Design | Slip (%) | NEMA Code | Enclosure Type | IP Rating | Max. Ambient |
|-----|------|-------|-------------|----------------|----------------|------------------|-------------|----------|-----------|----------------|-----------|--------------|
| 1/2 | 1745 | 56C | 208-230/460 | 60 | 1.15 | F | B | 3.1 | K | TEFC | 66 | 40 °C |

| Amps (460V) | | Efficiency (%) | | | Power Factor | | | Torque (ft-lb) | | | DE Bearing | ODE Bearing | Connection | Weight (lbs.) |
|-------------|-----|----------------|------|------|--------------|------|------|----------------|-------|-------|------------|-------------|-------------|---------------|
| FLA | LRA | 100% | 75% | 50% | 100% | 75% | 50% | FLT | LRT % | BDT % | | | | |
| 0.8 | 10 | 82.5 | 77.0 | 72.0 | 0.78 | 0.62 | 0.53 | 1.5 | 285 | 300 | 6205-2RS | 6205-2RS | 9 Lead 2Y/Y | 29 |

NAME PLATE

| | | | | | | | | | | | | | |
|--|-----------------|--|------|----------------|---------|------|------|-------------------------|----------|--------------------|-------|-------|----|
| | | THREE PHASE AC INDUCTION MOTOR INVERTER DUTY 20:1 VT; 10:1 CT | | | | | | | | Hernando, MS 38632 | | | |
| | | Model : | | SS56C1/2M-4-RB | | | | IP | 66 | FRAME | 56C | LB/WT | 29 |
| HZ | 60 | S.F. | 1.15 | HZ | 50 | S.F. | 1.0 | NEMA DESIGN | B | | | | |
| HP | 1/2 | RPM | 1745 | HP | 1/2 | RPM | 1450 | ENCL. | TEFC | INS | F | | |
| VOLTS | 208-230/460 | | | VOLTS | 190/380 | | | DUTY | CONT | AMB | 40 °C | | |
| AMPS | 1.8 - 1.6 / 0.8 | | | AMPS | 1.8/0.9 | | | DE BRG | 6205-2RS | | | | |
| CODE | K | P.F. | 0.78 | CODE | K | P.F. | 0.80 | ODE BRG | 6205-2RS | | | | |
| EFF | 82.5 | MIN | 80.0 | EFF | 80.0 | MIN | 77.0 | SER NO. | | | | | |
| <div style="display: flex; justify-content: space-around;"> <div style="text-align: center;"> <p>208-230V</p> </div> <div style="text-align: center;"> <p>460V</p> </div> </div> | | | | | | | | CC082A MADE IN CHINA | | | | | |

Factory Certified for T2B
 Div 2. Class I, Gr. A , B , C & D
 and Class II, Gr. F & G

APPLICATIONS:

Applications include washdown applications, food processing, chemical processing, pharmaceuticals, poultry processing, meat processing, dairy applications, bakeries, snack foods, bottling and extremely corrosive environments.