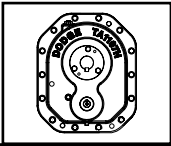
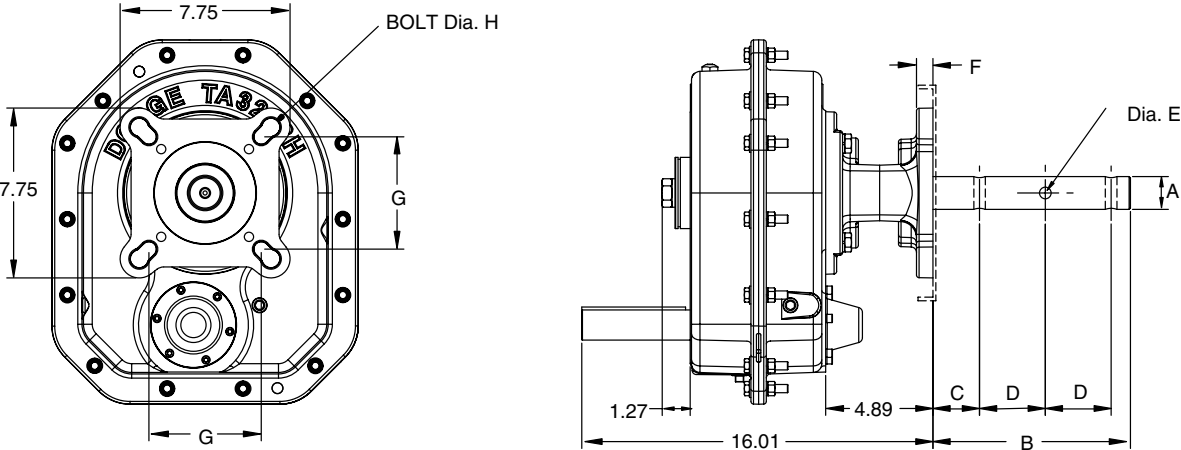


SELECTION/DIMENSIONS

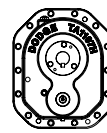


TORQUE-ARM II Shaft Mount Speed Reducers

SCREW CONVEYOR DRIVE - TA3203H, SINGLE AND DOUBLE REDUCTION



EASY SELECTION PAGE 9	SELECTION PAGE 12	RELATED PRODUCTS PAGE 123	ENGINEERING/TECHNICAL PAGE 129
--------------------------	----------------------	------------------------------	-----------------------------------



SELECTION/DIMENSIONS

TORQUE-ARM II Shaft Mount Speed Reducers

SCREW CONVEYOR DRIVE - TA3203H, SINGLE AND DOUBLE REDUCTION

TA3203H Screw Conveyor Drive Dimensions

Screw Dia	Drive Shaft Dia A	Dimensions						
		B	C	D	Hole Dia E	F	G	Bolt Dia H
6, 9	1-1/2	9.00	2.13	3.00	17/32	0.75	4.00	1/2-13
9, 12	2	9.00	2.13	3.00	21/32	0.75	5.13	5/8
12, 14	2-7/16	9.69	2.75	3.00	21/32	0.75	5.63	5/8
12, 14, 16, 18, 20	3	9.88	2.88	3.00	25/32	0.75	6.00	3/4

TA3203H Accessories for Screw Conveyor Drives (1) (4)

Description	Part Number	Weight lbs.
TA3203SCA Adapter & Hardware Kit ⁽²⁾	903070	22.0
TA3203SCP Adjustable Packing Kit ⁽³⁾	903071	1.4
TA3203SCS x 1-1/2 Drive Shaft	903072	19.3
TA3203SCS x 2 Drive Shaft	903073	22.6
TA3203SCS x 2-7/16 Drive Shaft	903074	27.2
TA3203SCS x 3 Drive Shaft	903075	33.6
TA3203SCS x 3-7/16 Drive Shaft	903076	44.8
TA3203SCS x 1-1/2 Stainless Steel Drive Shaft	903080	19.3
TA3203SCS x 2 Stainless Steel Drive Shaft	903081	22.6
TA3203SCS x 2-7/16 Stainless Steel Drive Shaft	903082	27.2
TA3203SCS x 3 Stainless Steel Drive Shaft	903083	33.6
TA3203SCS x 3-7/16 Stainless Steel Drive Shaft	903084	44.8

- (1) See page 61 for Belt Guard for Screw Conveyor Drive applications
 (2) SCA Adapter & Hardware Kit includes adapter, mounting wedge, keeper plate, key, seals and hardware
 (3) SCP Adjustable Packing Kit consists of flange, mounting hardware and braided packing seals
 (4) SCS Drive Shaft is a shaft only. Hardware is stocked with the adapter and hardware kit