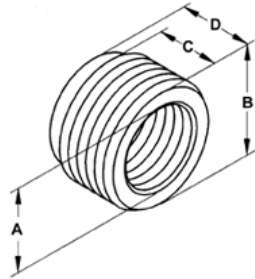
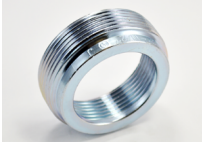


## Malleable Iron

### Images



### Application

Used to reduce the size of internal female threads. 1/2" thru 2" steel, 2 1/2" thru 4" malleable iron.

### Product Information

Material: Malleable Iron  
Finish: Zinc electro-plate

### Certifications & Codes:

UNSPSC: 39121312

[Download Photo Image](#)

[Download Dimensional Image](#)

Dimension A in Inches: 1-15/16  
Dimension B in Inches: 2-7/8  
Dimension C in Inches: 1-1/8  
Dimension D in Inches: 1-3/8

**Catalog ID:** 1176

**UPC Number:** 781747011763

**Description:** Bushing, Reducing, Malleable Iron, Size 2 1/2 - 2 Inch

**Application:** Used to reduce the size of internal female threads. 1/2" thru 2" steel, 2 1/2" thru 4" malleable iron.

**Trade Size:** 2-1/2" - 2"

**Std Pkg Qty:** 5

**Unit Qty:** Bulk