



Customer information packet

CEM2511T

10HP, 1180RPM, 3PH, 60HZ, 256TC, OPSB, F1

Class - None

Division - Not Applicable

Specifications

Enclosure	OPSB
Frame	256TC
Frame Material	Steel
Frequency	60.00 Hz
Haz Area Class and Group	None
Haz Area Division	Not Applicable
Motor Letter Type	Three Phase
Output @ Frequency	10.000 HP @ 60 HZ
Phase	3
Synchronous Speed @ Frequency	1200 RPM @ 60 HZ
Voltage @ Frequency	230.0 V @ 60 HZ 460.0 V @ 60 HZ
Agency Approvals	NEMA PREMIUM CURUSEEV
Ambient Temperature	40 °C
Auxillary Box	No Auxillary Box
Auxillary Box Lead Termination	None
Base Indicator	Rigid
Bearing Grease Type	Polyrex EM (-20F +300F)
Blower	None
Current @ Voltage	14.300 A @ 460.0 V 28.600 A @ 230.0 V 30.000 A @ 208.0 V
Design Code	A
Drip Cover	No Drip Cover
Duty Rating	CONT
Efficiency @ 100% Load	91.7 %
Electrically Isolated Bearing	Not Electrically Isolated
Feedback Device	NO FEEDBACK
Heater Indicator	No Heater
High Voltage Full Load Amps	14.3 a
Insulation Class	F

Part detail

Revision	G
Type	AC
Mech. spec.	
Base	
Status	PRD/A
Elec. spec.	39WGW950
Layout	39LYD102
Eff. date	11-14-2023
CD Diagram	CD0180
Poles	06
Leads	9#12
Proprietary	False
Created date	02-20-2020

Inverter Code	Inverter Ready
IP Rating	NONE
KVA Code	J
Lifting Lugs	Standard Lifting Lugs
Locked Bearing Indicator	Locked Bearing
Motor Lead Termination	Flying Leads
Motor Standards	NEMA
Motor Type	3954M
Mounting Arrangement	F1
Number of Poles	6
Overall Length	23.19 IN
Power Factor	71
Product Family	General Purpose
Pulley Face Code	C-Face
Rodent Screen	None
Service Factor	1.15
Shaft Diameter	1.625 IN
Shaft Ground Indicator	No Shaft Grounding
Shaft Rotation	Reversible
Speed	1180 rpm
Speed Code	Single Speed
Starting Method	Direct on line
Thermal Device - Bearing	None
Thermal Device - Winding	None
Vibration Sensor Indicator	No Vibration Sensor
Winding Thermal 1	None
Winding Thermal 2	None

Nameplate

NP1259L									
CAT.NO.	CEM2511T								
SPEC.	39-0000-0268								
HP	10								
VOLTS	230/460								
AMP	28.6/14.3								
RPM	1180								
FRAME	256TC	HZ	60	PH	3				
SER.F.	1.15	CODE	J	DES	A	CL	F		
NEMA-NOM-EFF	91.7	PF	71						
RATING	40C AMB-CONT								
CC	010A								
DE	6309	ODE	6208						
ENCL	OPSB	SN							

AC Induction Motor Performance Data

Record # 13008

Typical performance - not guaranteed values

Winding: 39WGW950-R001		Type: 3954M	Enclosure: OPSB
Nameplate Data		460 V, 60 Hz: High Voltage Connection	
Rated Output (HP)	10	Full Load Torque	44.4 LB-FT
Volts	230/460	Start Configuration	direct on line
Full Load Amps	28.6/14.3	Breakdown Torque	132 LB-FT
R.P.M.	1180	Pull-up Torque	53 LB-FT
Hz	60 Phase	Locked-rotor Torque	69.8 LB-FT
NEMA Design Code	A KVA Code	Starting Current	91.8 A
Service Factor (S.F.)	1.15	No-load Current	7.16 A
NEMA Nom. Eff.	91.7 Power Factor	Line-line Res. @ 25°C	0.746 Ω
Rating - Duty	40C AMB-CONT	Temp. Rise @ Rated Load	22°C
S.F. Amps		Temp. Rise @ S.F. Load	29°C
		Locked-rotor Power Factor	25.9
		Rotor inertia	4.34 lb-ft ²

Load Characteristics 460 V, 60 Hz, 10 HP

% of Rated Load	25	50	75	100	125	150	S.F.
Power Factor	34	54	65	71	74	75	73
Efficiency	85.7	91	92	92	91.4	90.5	91.6
Speed	1196	1192	1187	1182	1177	1172	1179
Line amperes	8.04	9.52	11.7	14.25	17.29	20.7	16.07

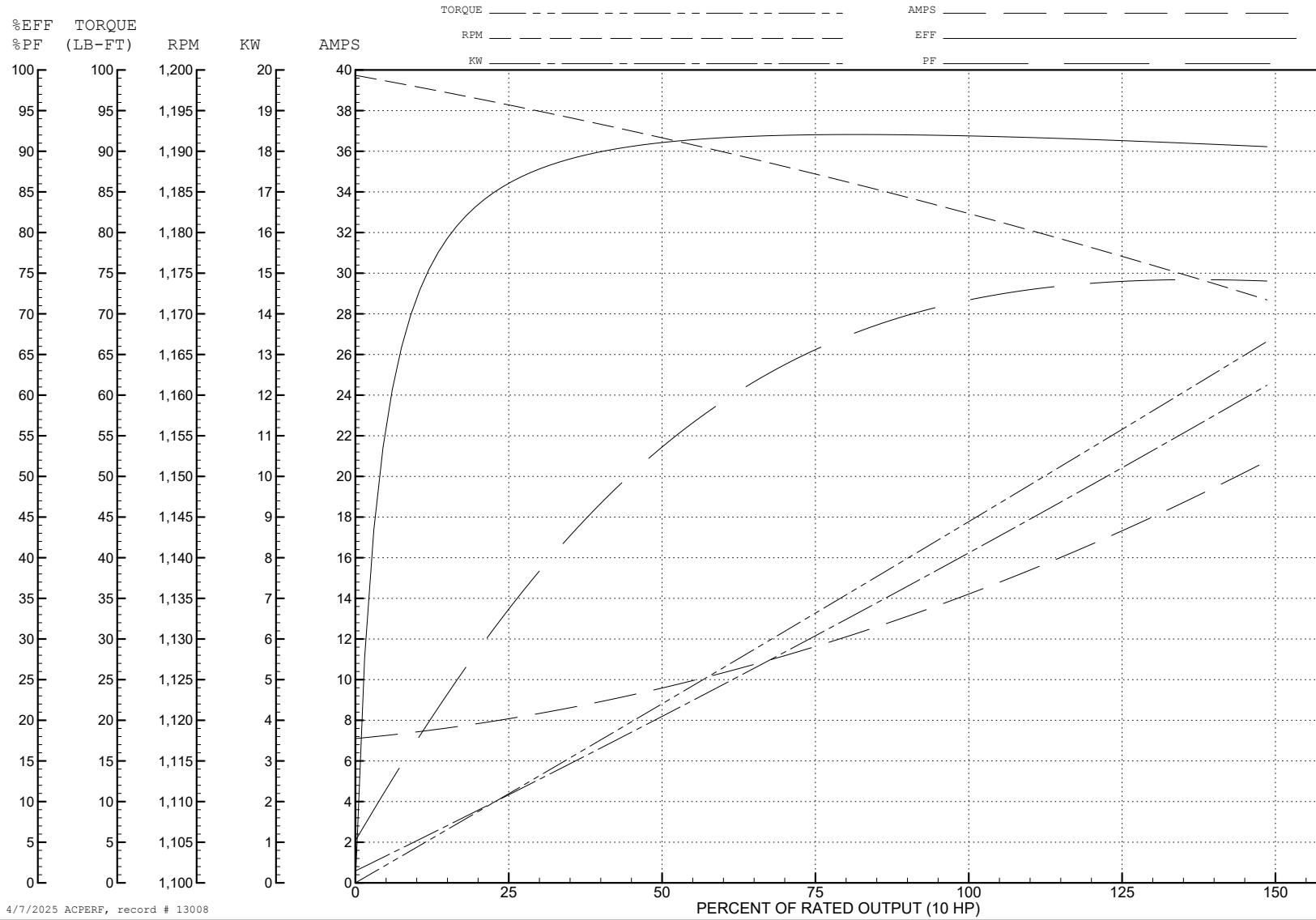
ABB Motors and Mechanical Inc.

WINDING # 39WGW950

Typical performance - not guaranteed values.

10 HP 3 PH 60 HZ 1180 RPM 460 V 3954M

TORQUES (LB-FT): PO=132 PU=53 LR=69.8 LRA=91.8



4/7/2025 ACPERF, record # 13008

AC Induction Motor Performance Data

Record # 33857

Typical performance - not guaranteed values

Winding: 39WGW950-R001		Type: 3954M	Enclosure: OPSB		
Nameplate Data			460 V, 60 Hz: High Voltage Connection		
Rated Output (HP)	10	Full Load Torque	44.1 LB-FT		
Volts	230/460	Start Configuration	direct on line		
Full Load Amps	28.6/14.3	Breakdown Torque	149 LB-FT		
R.P.M.	1180	Pull-up Torque	55.5 LB-FT		
Hz	60 Phase	3	Locked-rotor Torque	67.6 LB-FT	
NEMA Design Code	A	KVA Code	J	Starting Current	91.6 A
Service Factor (S.F.)	1.15	No-load Current	7.51 A		
NEMA Nom. Eff.	91.7	Power Factor	71	Line-line Res. @ 25°C	0.72568 Ω
Rating - Duty	40C AMB-CONT		Temp. Rise @ Rated Load	18°C	
S.F. Amps			Temp. Rise @ S.F. Load	22°C	
			Locked-rotor Power Factor	25.9	
			Rotor inertia	4.34 LB-FT ²	

Load Characteristics 460 V, 60 Hz, 10 HP

% of Rated Load	25	50	75	100	125	150	S.F.
Power Factor	34	53	64	70	73	74	72
Efficiency	84.5	90.2	91.8	92.1	91.8	91.1	91.9
Speed	1195.9	1191.9	1187.8	1182.8	1177.7	1171.6	1180
Line amperes	8.2	9.72	11.9	14.4	17.5	20.6	16.3

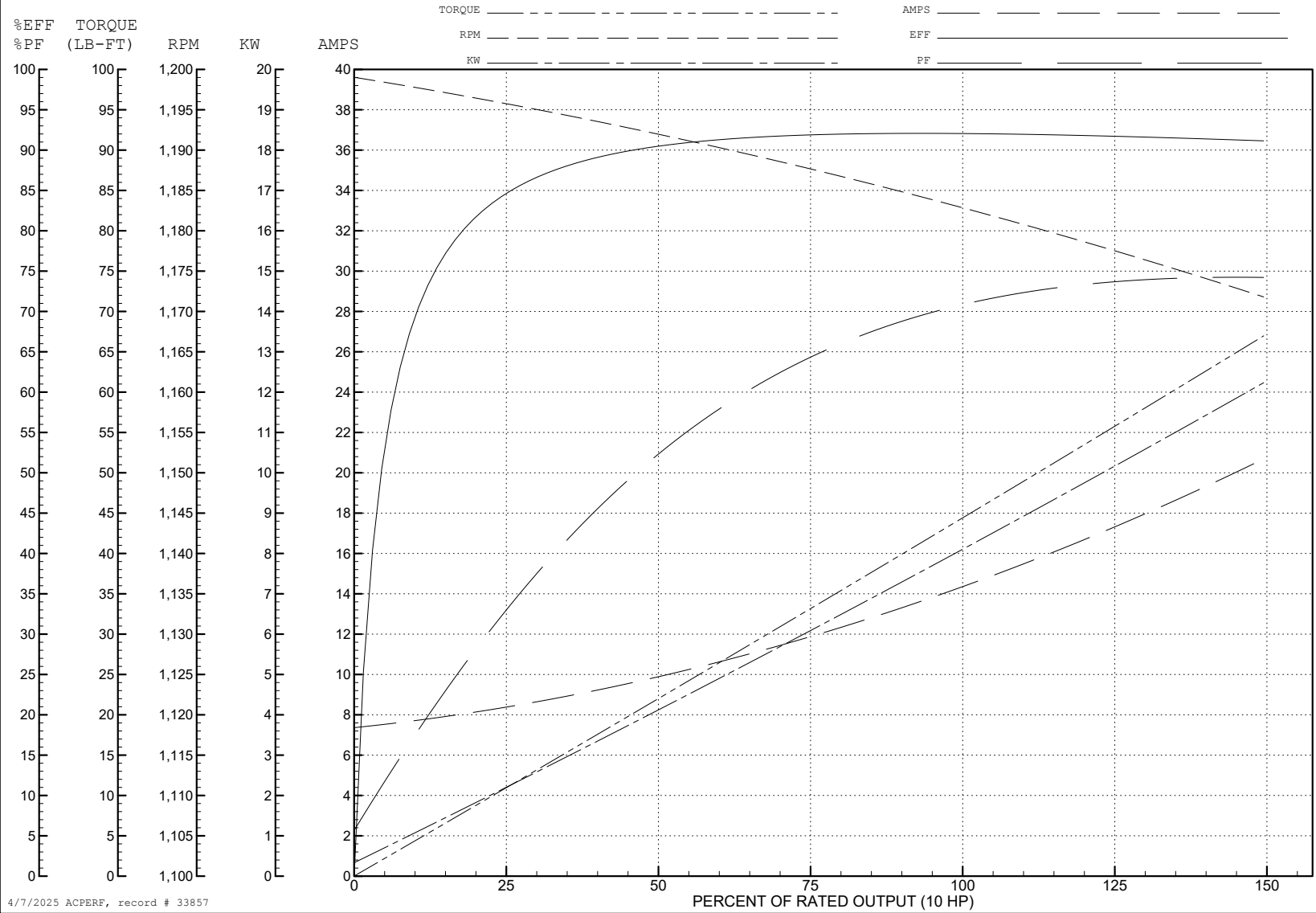
ABB Motors and Mechanical Inc.

WINDING # 39WGW950

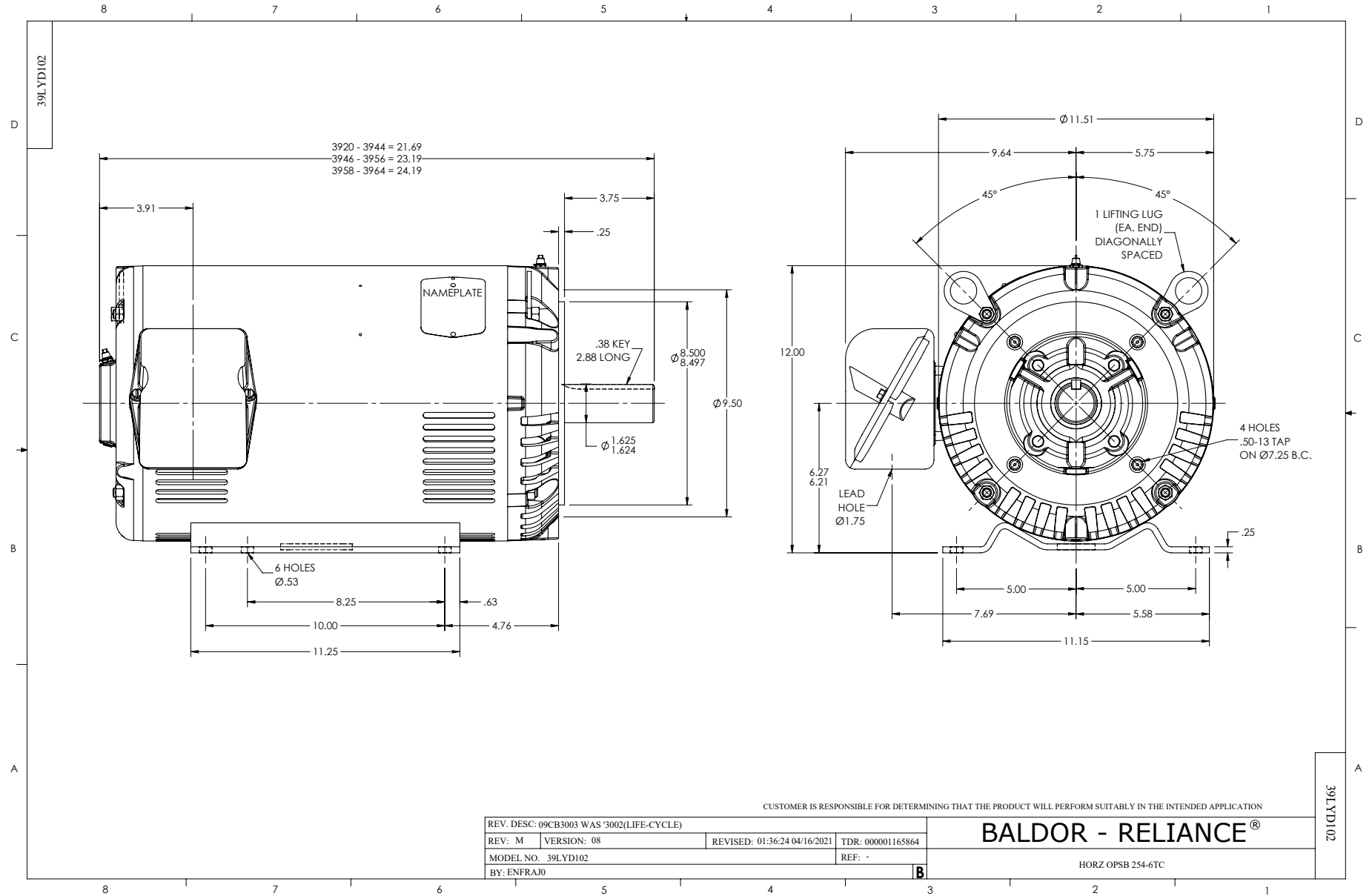
Typical performance - not guaranteed values.

10 HP 3 PH 60 HZ 1180 RPM 460 V 3954M

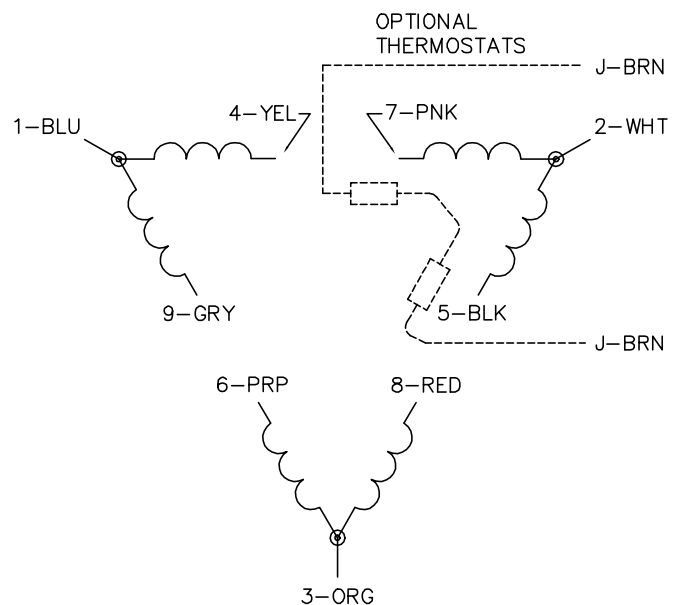
TORQUES (LB-FT): PO=149 PU=55.5 LR=67.6 LRA=91.6



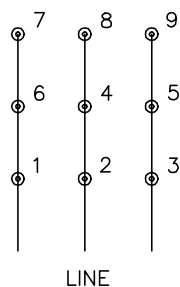
4/7/2025 ACPERF, record # 33857



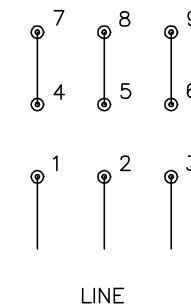
CD0180



LOW VOLTAGE
(2D)



HIGH VOLTAGE
(1D)



NOTES:

1. INTERCHANGE ANY TWO LINE LEADS TO REVERSE ROTATION.
2. OPTIONAL THERMOSTATS ARE PROVIDED WHEN SPECIFIED.
3. ACTUAL NUMBER OF INTERNAL PARALLEL CIRCUITS MAY BE A MULTIPLE OF THOSE SHOWN ABOVE.
4. LEAD COLORS ARE OPTIONAL. LEADS MUST ALWAYS BE NUMBERED AS SHOWN.

CD0180

REV. DESC: ADD CLASS CONN00000007		
REV. LTR: D	VERSION: 01	TDR: 000001099922
FILE: \AAA\00005\148	REVISED: 10: 25: 29 02/19/2019	BY: ENBRIRO
MTL: -	© □	

BALDOR - RELIANCE®

3PH, DV, 9 LEADS, DELTA CONNECTION

SH 1 of 1