

BALDOR • RELIANCE

Customer information packet

CESSWDM3709T-5

7.5HP, 3500RPM, 3PH, 60HZ, 213TC, 3734M, TEFC

Class -

Division - Not Applicable

Specifications

Enclosure	TEFC
Frame	213TC
Frame Material	Stainless Steel
Frequency	60.00 Hz
Haz Area Division	Not Applicable
Motor Letter Type	Three Phase
Output @ Frequency	7.500 HP @ 60 HZ
Phase	3
Synchronous Speed @ Frequency	3600 RPM @ 60 HZ
Voltage @ Frequency	575.0 V @ 60 HZ
Ambient Temperature	40 °C
Auxillary Box	No Auxillary Box
Auxillary Box Lead Termination	None
Base Indicator	Rigid
Bearing Grease Type	Polyrex EM (-20F +300F)
Blower	None
Current @ Voltage	6.700 A @ 575.0 V
Design Code	A
Drip Cover	No Drip Cover
Duty Rating	CONT
Efficiency @ 100% Load	91.0 %
Electrically Isolated Bearing	Not Electrically Isolated
Feedback Device	NO FEEDBACK
Front Face Code	Standard
Front Shaft Indicator	None
Heater Indicator	No Heater
High Voltage Full Load Amps	6.7 a
Insulation Class	F
Inverter Code	Inverter Ready
KVA Code	L
Lifting Lugs	Standard Lifting Lugs
Locked Bearing Indicator	Locked Bearing

Part detail

Revision	P
Type	AC
Mech. spec.	37J639
Base	
Status	PRD/A
Elec. spec.	37WGR393
Layout	37LYJ639
Eff. date	12-18-2024
CD Diagram	CD0006
Poles	02
Leads	3#14
Proprietary	False
Created date	01-20-2015

Motor Lead Exit	Ko Box
Motor Lead Quantity/Wire Size	3 @ 14 AWG
Motor Lead Termination	Flying Leads
Motor Standards	NEMA
Motor Type	3734M
Mounting Arrangement	F1
Number of Poles	2
Overall Length	19.03 IN
Power Factor	94
Product Family	Wash Down All Stainless Steel
Pulley End Bearing Type	Sealed Bearing
Pulley Face Code	C-Face
Pulley Shaft Indicator	Standard
Rodent Screen	None
RoHS Status	ROHS COMPLIANT
Service Factor	1.15
Shaft Diameter	1.375 IN
Shaft Extension Location	Pulley End
Shaft Ground Indicator	No Shaft Grounding
Shaft Rotation	Reversible
Shaft Slinger Indicator	No Slinger
Speed	3500 rpm
Speed Code	Single Speed
Starting Method	Direct on line
Thermal Device - Bearing	None
Thermal Device - Winding	None
Vibration Sensor Indicator	No Vibration Sensor
Winding Thermal 1	None
Winding Thermal 2	None

Nameplate

NP1953C05									
CAT.NO.	CESSWDM3709T-5								
SPEC.	37J639R393G1								
HP	7.5								
VOLTS	575								
AMP	6.7								
RPM	3500								
FRAME	213TC		HZ	60		PH	3		
SER.F.	1.15	CODE	L	DES	A	CLASS	F		
NEMA-NOM-EFF	91	PF	94						
RATING	40C AMB-CONT								
CC	010A	USABLE AT 208V	N/A						
DE	6307	ODE	6206						
ENCL	TEFC	SN							
	4:1CT 20:1VT								

AC Induction Motor Performance Data

Record # 58663

Typical performance - not guaranteed values

Winding: 37WGR393-R001		Type: 3734M		Enclosure: TEFC	
Nameplate Data			575 V, 60 Hz: Single Voltage Motor		
Rated Output (HP)	7.5	Full Load Torque	11.5 LB-FT		
Volts	575	Start Configuration	direct on line		
Full Load Amps	6.7	Breakdown Torque	67.5 LB-FT		
R.P.M.	3500	Pull-up Torque	26.4 LB-FT		
Hz	60	Phase	3	Locked-rotor Torque	37.5 LB-FT
NEMA Design Code	A	KVA Code	L	Starting Current	70.3 A
Service Factor (S.F.)			1.15	No-load Current	2.68 A
NEMA Nom. Eff.	91	Power Factor	94	Line-line Res. @ 25°C	1.43 Ω
Rating - Duty	40C AMB-CONT			Temp. Rise @ Rated Load	47°C
S.F. Amps				Temp. Rise @ S.F. Load	57°C
				Locked-rotor Power Factor	32.7
				Rotor inertia	0.311 LB-FT ²

Load Characteristics 575 V, 60 Hz, 7.5 HP

% of Rated Load	25	50	75	100	125	150	S.F.
Power Factor	60	84	89	94	95	100	95
Efficiency	84.3	90.8	92	91.9	91.3	90.8	91.7
Speed	3584	3564	3542	3521	3499	3483	3510
Line amperes	2.89	3.82	5.34	6.69	8.29	9.49	7.65

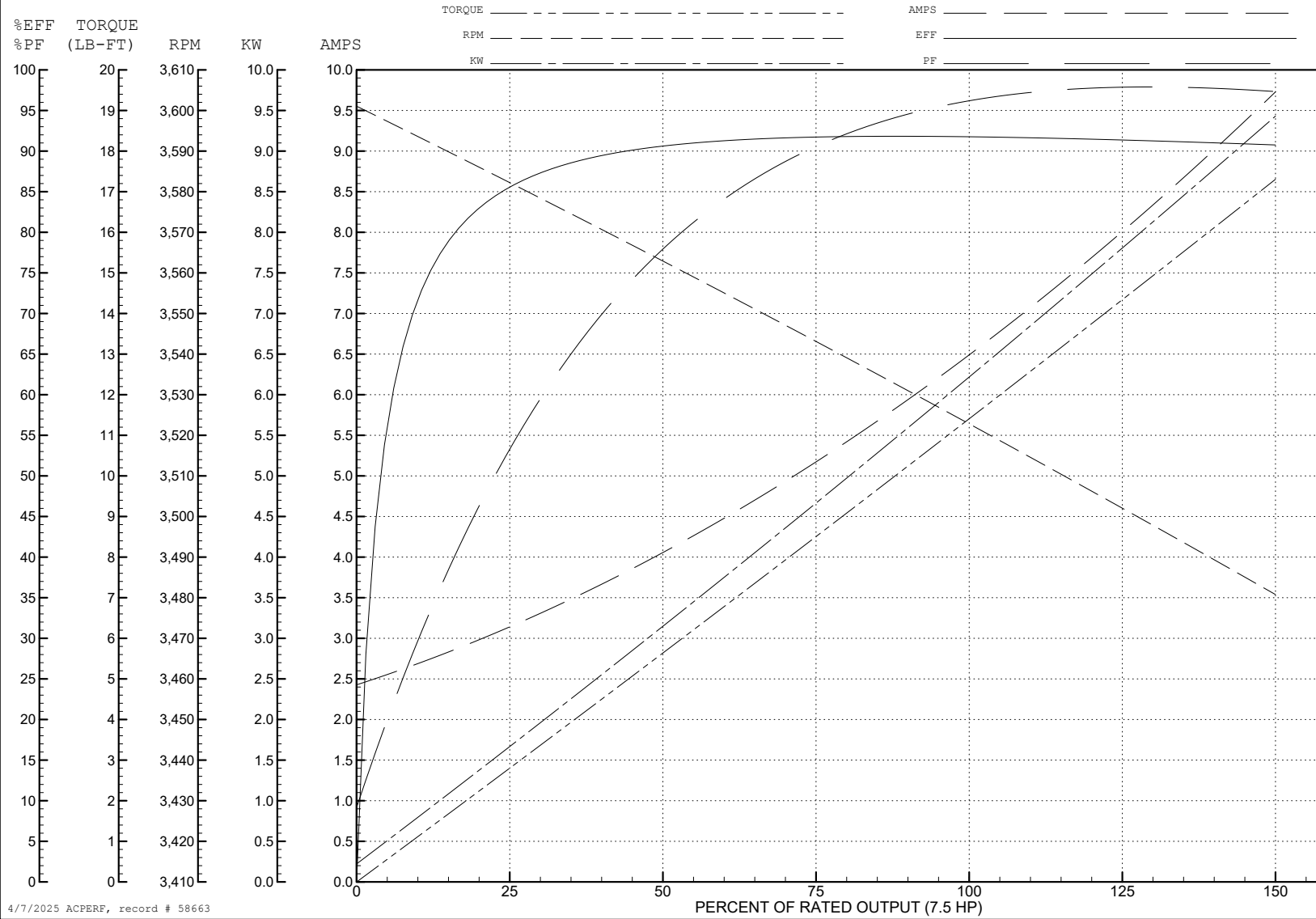
ABB Motors and Mechanical Inc.

WINDING # 37WGR393

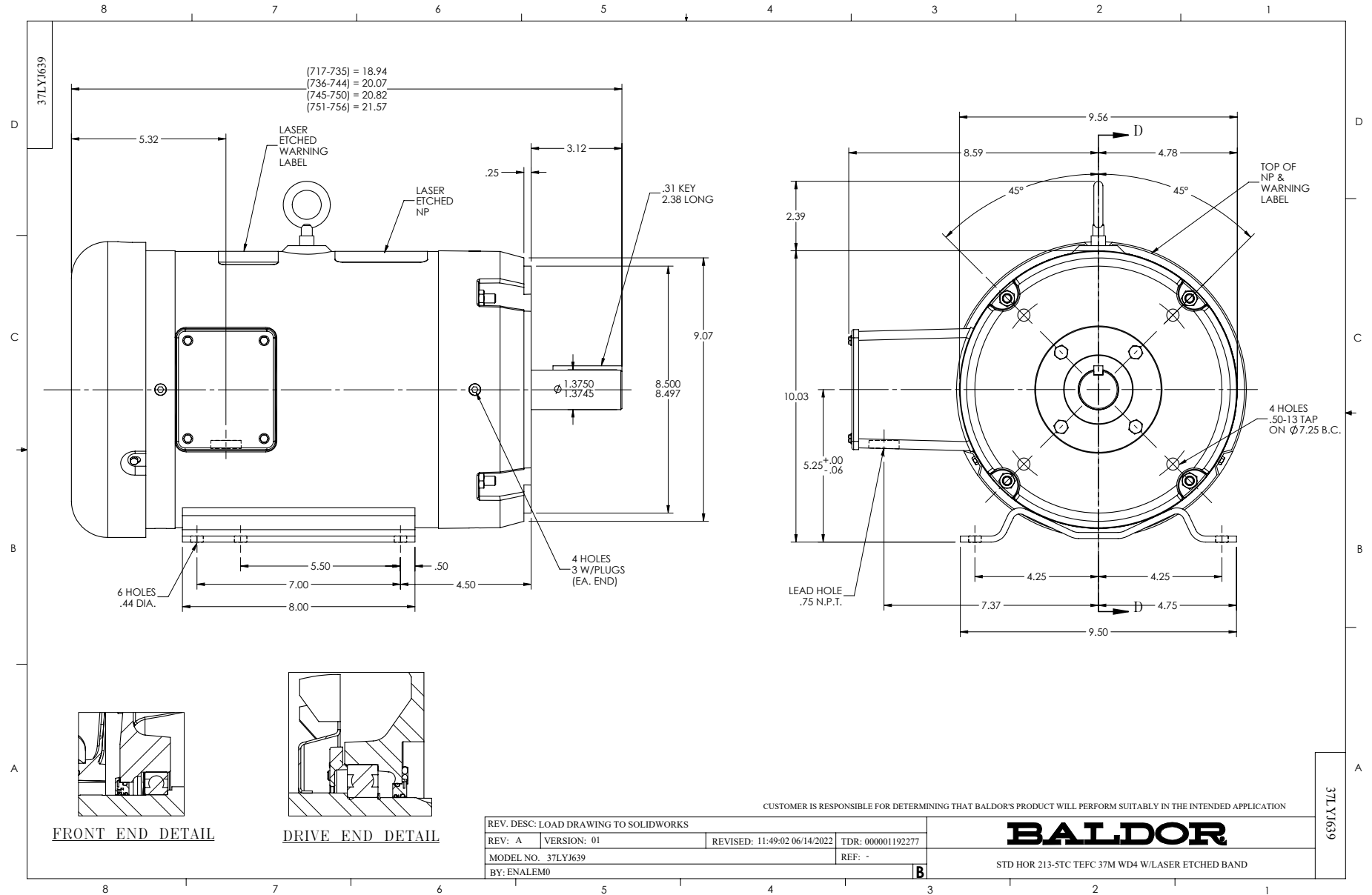
Typical performance - not guaranteed values.

7.5 HP 3 PH 60 HZ 3500 RPM 575 V 3734M

TORQUES (LB-FT): PO=67.5 PU=26.4 LR=37.5 LRA=70.3



4/7/2025 ACPERF, record # 58663



CD0006



NOTES:

1. THREE LEAD MOTOR MAY BE EITHER WYE CONNECTED OR DELTA CONNECTED.
2. INTERCHANGE ANY TWO LINE LEADS TO REVERSE ROTATION.
3. OPTIONAL THERMOSTATS ARE PROVIDED WHEN SPECIFIED.
4. ACTUAL NUMBER OF INTERNAL PARALLEL CIRCUITS MAY VARY.
5. LEAD COLORS ARE OPTIONAL. LEADS MUST BE NUMBERED AS SHOWN.

CD0006

REV. DESC: ADD CLASS CONN00000007		
REV. LTR: E	VERSION: 01	TDR: 000001099922
FILE: \AAA\00005\141	REVISED: 10:24:49 02/19/2019	BY: ENBRIRO
MTL: -		© □

BALDOR - RELIANCE®

3PH, SV, 3 LEADS, WYE OR DELTA CONNECTED

SH 1 of 1