

BALDOR • RELIANCE

Customer information packet

CEWDM3556-H

1//.75HP, 1155//970RPM, 3PH, 60//50HZ, 56HC

Class - None

Division - Not Applicable

Copyright © All product information within this document is subject to ABB Motors and Mechanical Inc. copyright © protection, unless otherwise noted.

4/7/2025 9:02:04 AM

Specifications

Enclosure	TEFC
Frame	56HC
Frame Material	Steel
Frequency	50.00 Hz 60.00 Hz
Haz Area Class and Group	None
Haz Area Division	Not Applicable
Motor Letter Type	Three Phase
Output @ Frequency	.750 HP @ 50 HZ 1.000 HP @ 60 HZ
Phase	3
Synchronous Speed @ Frequency	1200 RPM @ 60 HZ
Voltage @ Frequency	380.0 V @ 50 HZ 230.0 V @ 60 HZ 190.0 V @ 50 HZ 460.0 V @ 60 HZ
Agency Approvals	CSA EEV NEMA PREMIUM UR
Ambient Temperature	40 °C
Auxillary Box	No Auxillary Box
Auxillary Box Lead Termination	None
Base Indicator	Rigid
Bearing Grease Type	Polyrex EM (-20F +300F)
Blower	None
Current @ Voltage	3.500 A @ 208.0 V 3.200 A @ 190.0 V 3.000 A @ 230.0 V 1.600 A @ 380.0 V 1.500 A @ 460.0 V
Design Code	B
Drip Cover	No Drip Cover

Part detail

Revision	-
Type	AC
Mech. spec.	35E6082
Base	
Status	PRD/A
Elec. spec.	35WGG019
Layout	35LYE6082
Eff. date	06-22-2023
CD Diagram	CD0005
Poles	06
Leads	9#18
Proprietary	False
Created date	02-20-2023

Duty Rating	CONT
Efficiency @ 100% Load	82.5 %
Electrically Isolated Bearing	Not Electrically Isolated
Feedback Device	NO FEEDBACK
Front Shaft Indicator	None
Heater Indicator	No Heater
High Voltage Full Load Amps	1.5 a
Insulation Class	F
Inverter Code	Inverter Ready
KVA Code	J
Lifting Lugs	No Lifting Lugs
Locked Bearing Indicator	Locked Bearing
Motor Lead Quantity/Wire Size	9 @ 18 AWG
Motor Lead Termination	Flying Leads
Motor Standards	NEMA
Motor Type	3526M
Mounting Arrangement	F1
Number of Poles	6
Overall Length	13.08 IN
Power Factor	67
Product Family	Wash Down
Pulley End Bearing Type	Sealed Bearing
Pulley Face Code	C-Face
Pulley Shaft Indicator	Standard
Rodent Screen	None
RoHS Status	ROHS COMPLIANT
Service Factor	1.15
Shaft Diameter	0.625 IN
Shaft Ground Indicator	No Shaft Grounding
Shaft Rotation	Reversible
Shaft Slinger Indicator	Shaft Slinger
Speed	1155 rpm
	970 rpm
Speed Code	Single Speed

Starting Method	Direct on line
Thermal Device - Bearing	None
Thermal Device - Winding	None
Vibration Sensor Indicator	No Vibration Sensor
Winding Thermal 1	None
Winding Thermal 2	None

Nameplate

NP3956L			
CAT.NO.	CEWDM3556-H		
SPEC.	35E6082G019G1		
FRAME	56HC	H.P.	1//.75 TE
VOLTS	230/460//190/380		
MAG. CUR.	2/1	F.L. AMPS	3/1.5//3.2/1.6
R.P.M.	1155//970	R.P.M. MAX	
HZ.	60//50	PH.	3 CLASS F
SER.F.	1.15	DES.	B SL HZ 1.57
NEMA NOM. EFF.	82.5	WK2	0.189
BLWR V	PH	HZ	AMPS
RATING	40C AMB-CONT		
DE BRG	6205	ODE BRG	6203
CC	010A SN		
	SFA 3.7/1.85//3.5/1.75		

AC Induction Motor Performance Data

Record # 87695

Typical performance - not guaranteed values

Winding: 35WGG019-R006		Type: 3526M	Enclosure: TEFC	
Nameplate Data			460 V, 60 Hz: High Voltage Connection	
Rated Output (HP)	1//0.75	Full Load Torque	4.479 LB-FT	
Volts	230/460//190/380	Start Configuration	direct on line	
Full Load Amps	3/1.5//3.2/1.6	Breakdown Torque	11.9 LB-FT	
R.P.M.	1155//970	Pull-up Torque	7.06 LB-FT	
Hz	60 Phase 3	Locked-rotor Torque	8.62 LB-FT	
NEMA Design Code	B KVA Code J	Starting Current	9.06 A	
Service Factor (S.F.)	1.15	No-load Current	1.02 A	
NEMA Nom. Eff.	0 Power Factor 0	Line-line Res. @ 25°C	20.372 Ω	
Rating - Duty	40C AMB-CONT	Temp. Rise @ Rated Load	46°C	
S.F. Amps	3.7/1.85	Temp. Rise @ S.F. Load	56°C	
		Locked-rotor Power Factor	48.3	
		Rotor inertia	0.189 lb-ft ²	

Load Characteristics 460 V, 60 Hz, 1 HP

% of Rated Load	25	50	75	100	125	150	S.F.
Power Factor	29	47	1	1	1	1	1
Efficiency	73.5	81.9	83.5	83.1	81.6	79.1	82.2
Speed	1192.5	1185.4	1177.6	1168.7	1159	1147	1163
Line amperes	1.07	1.21	1.41	1.67	1.98	2.35	1.86

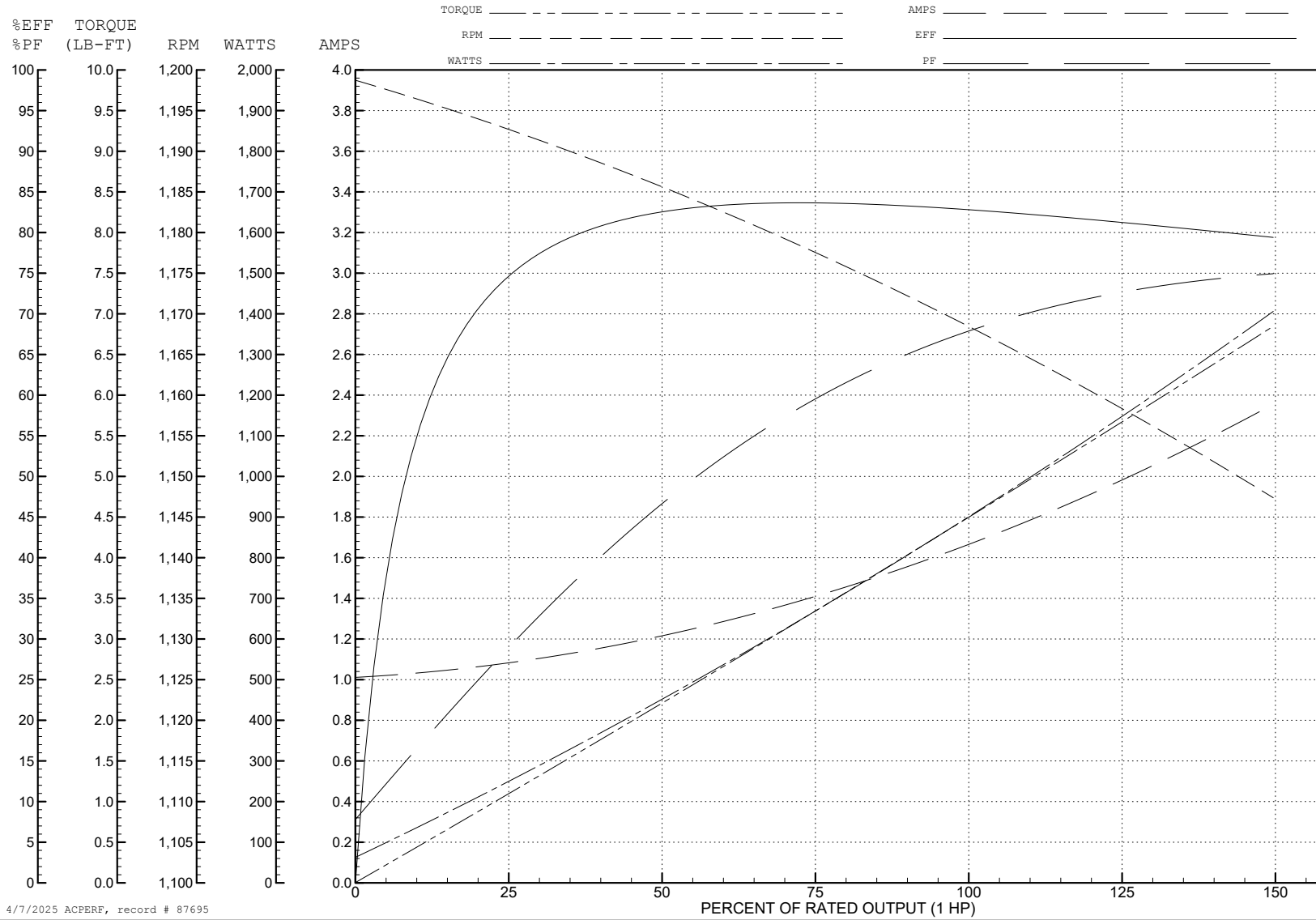
ABB Motors and Mechanical Inc.

WINDING # 35WGG019

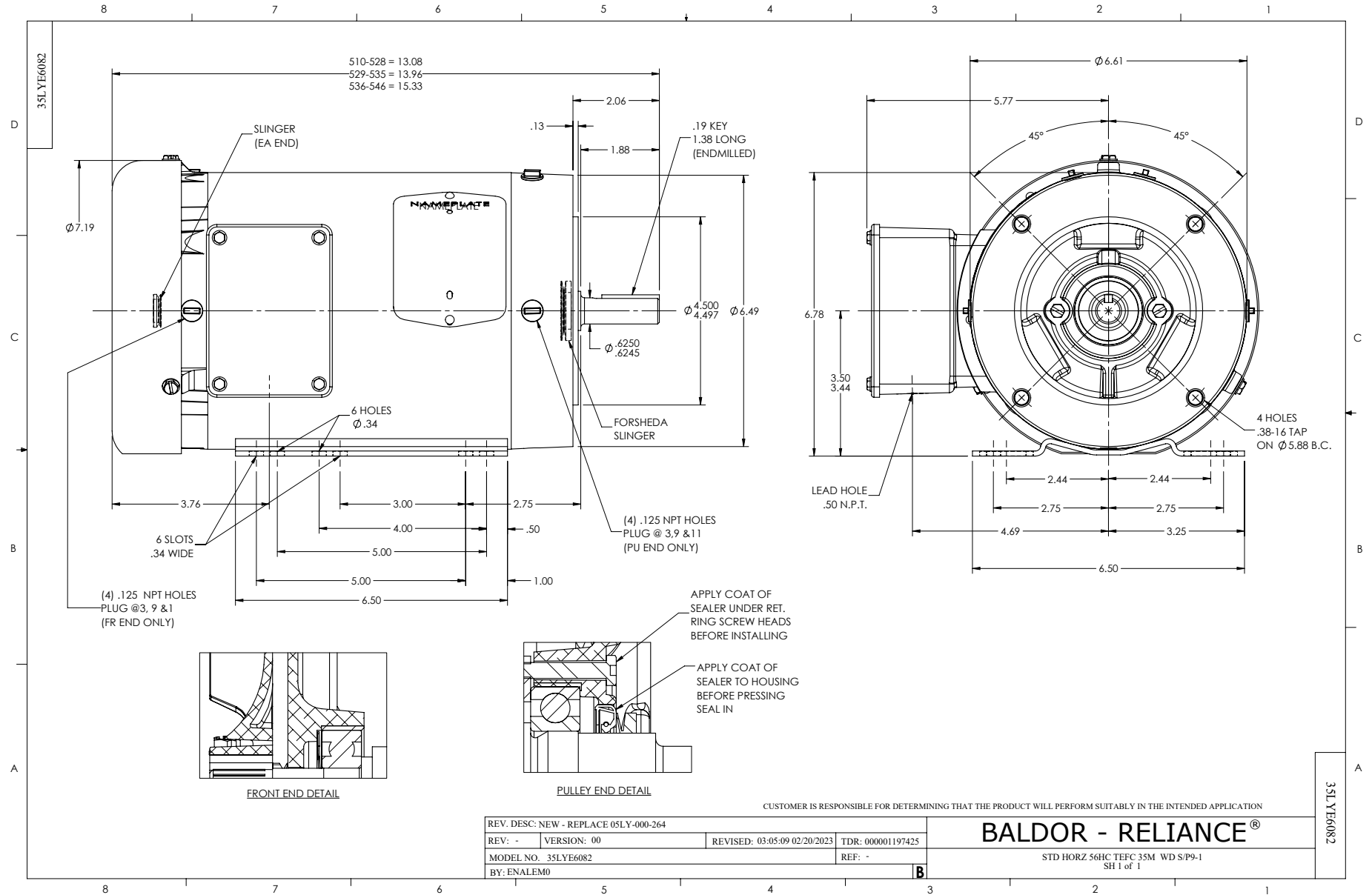
Typical performance - not guaranteed values.

1 HP 3 PH 60 HZ 1168.7 RPM 460 V 3526M

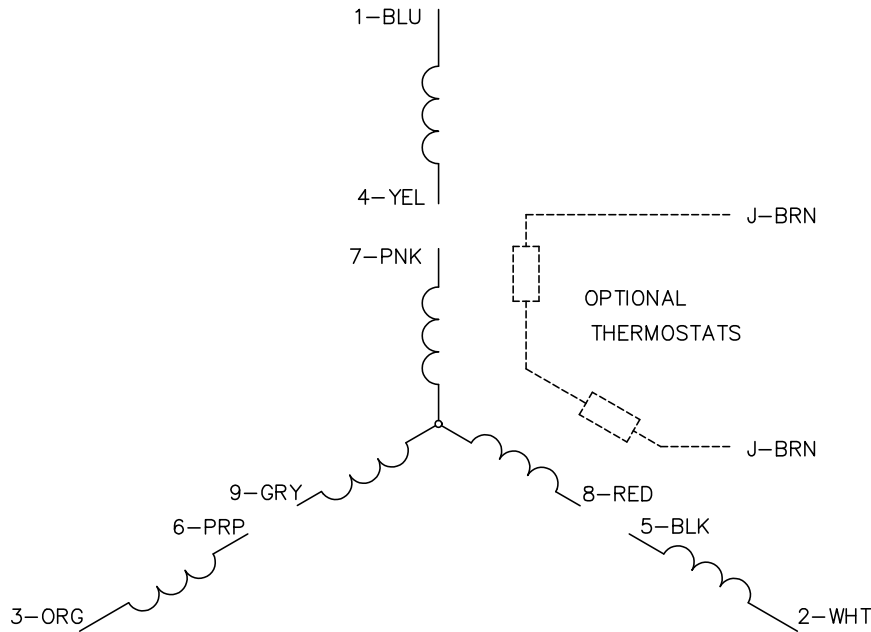
TORQUES (LB-FT): PO=11.9 PU=7.06 LR=8.62 LRA=9.06



4/7/2025 ACPERF, record # 87695



CD0005



LOW VOLTAGE
(2Y)



LINE

HIGH VOLTAGE
(1Y)



LINE

NOTES:

1. INTERCHANGE ANY TWO LINE LEADS TO REVERSE ROTATION.
2. OPTIONAL THERMOSTATS ARE PROVIDED WHEN SPECIFIED.
3. ACTUAL NUMBER OF INTERNAL PARALLEL CIRCUITS MAY BE A MULTIPLE OF THOSE SHOWN ABOVE.
4. LEAD COLORS ARE OPTIONAL. LEADS MUST ALWAYS BE NUMBERED AS SHOWN.

CD0005

REV. DESC: REVISE TO SHOW OPTIONAL COLORS			
REV. LTR: E	BY: JLP	REVISED: 01/19/99 10:15	TDR: 0171435
S00000		FILE: AAA00005140	MDL: -
		MTL: -	

BALDOR ELECTRIC Co.

3PH, DV, 9 LEADS