

**BALDOR • RELIANCE**

---

# Customer information packet

## CEWDM3556T

1//.75HP, 1155//970RPM, 3PH, 60//50HZ, 145TC

Class - None

Division - Not Applicable

Copyright © All product information within this document is subject to ABB Motors and Mechanical Inc. copyright © protection, unless otherwise noted.

4/7/2025 9:02:17 AM

## Specifications

Enclosure	TEFC
Frame	145TC
Frame Material	Steel
Frequency	50.00 Hz 60.00 Hz
Haz Area Class and Group	None
Haz Area Division	Not Applicable
Motor Letter Type	Three Phase
Output @ Frequency	.750 HP @ 50 HZ 1.000 HP @ 60 HZ
Phase	3
Synchronous Speed @ Frequency	1200 RPM @ 60 HZ
Voltage @ Frequency	380.0 V @ 50 HZ 230.0 V @ 60 HZ 190.0 V @ 50 HZ 460.0 V @ 60 HZ
Agency Approvals	CSA EEV NEMA PREMIUM UR
Ambient Temperature	40 °C
Auxillary Box	No Auxillary Box
Auxillary Box Lead Termination	None
Base Indicator	Rigid
Bearing Grease Type	Polyrex EM (-20F +300F)
Blower	None
Current @ Voltage	3.500 A @ 208.0 V 3.200 A @ 190.0 V 3.000 A @ 230.0 V 1.600 A @ 380.0 V 1.500 A @ 460.0 V
Design Code	B
Drip Cover	No Drip Cover

## Part detail

Revision	D
Type	AC
Mech. spec.	35S595
Base	
Status	PRD/A
Elec. spec.	35WGG019
Layout	35LYS595
Eff. date	07-31-2024
CD Diagram	CD0005
Poles	06
Leads	9#18
Proprietary	False
Created date	02-23-2023

<b>Duty Rating</b>	CONT
<b>Efficiency @ 100% Load</b>	82.5 %
<b>Electrically Isolated Bearing</b>	Not Electrically Isolated
<b>Feedback Device</b>	NO FEEDBACK
<b>Front Shaft Indicator</b>	None
<b>Heater Indicator</b>	No Heater
<b>High Voltage Full Load Amps</b>	1.5 a
<b>Insulation Class</b>	F
<b>Inverter Code</b>	Inverter Ready
<b>KVA Code</b>	J
<b>Lifting Lugs</b>	No Lifting Lugs
<b>Locked Bearing Indicator</b>	Locked Bearing
<b>Motor Lead Quantity/Wire Size</b>	9 @ 18 AWG
<b>Motor Lead Termination</b>	Flying Leads
<b>Motor Standards</b>	NEMA
<b>Motor Type</b>	3526M
<b>Mounting Arrangement</b>	F1
<b>Number of Poles</b>	6
<b>Overall Length</b>	13.28 IN
<b>Power Factor</b>	67
<b>Product Family</b>	Wash Down
<b>Pulley End Bearing Type</b>	Sealed Bearing
<b>Pulley Face Code</b>	C-Face
<b>Pulley Shaft Indicator</b>	Standard
<b>Rodent Screen</b>	None
<b>Service Factor</b>	1.15
<b>Shaft Diameter</b>	0.875 IN
<b>Shaft Ground Indicator</b>	No Shaft Grounding
<b>Shaft Rotation</b>	Reversible
<b>Speed</b>	1155 rpm 970 rpm
<b>Speed Code</b>	Single Speed
<b>Starting Method</b>	Direct on line
<b>Thermal Device - Bearing</b>	None

<b>Thermal Device - Winding</b>	None
<b>Vibration Sensor Indicator</b>	No Vibration Sensor
<b>Winding Thermal 1</b>	None
<b>Winding Thermal 2</b>	None

**Nameplate**

<b>NP1669L</b>									
<b>CAT.NO.</b>	CEWDM3556T								
<b>SPEC.</b>	35S595G019								
<b>HP</b>	1//.75								
<b>VOLTS</b>	230/460//190/380								
<b>AMP</b>	3/1.5//3.2/1.6								
<b>RPM</b>	1155//970								
<b>FRAME</b>	145TC		<b>HZ</b>	60//50		<b>PH</b>	3		
<b>SER.F.</b>	1.15	<b>CODE</b>	J	<b>DES</b>	B	<b>CLASS</b>	F		
<b>NEMA-NOM-EFF</b>	82.5	<b>PF</b>	67						
<b>RATING</b>	40C AMB-CONT								
<b>CC</b>									
<b>DE</b>	6205		<b>ODE</b>						
<b>ENCL</b>	TEFC	<b>SN</b>							
<b>BLANK</b>	SFA 3.7/1.85//3.5/1.75								

**AC Induction Motor Performance Data**

Record # 54266

Typical performance - not guaranteed values

Winding: 35WGM497-R012		Type: 3526M		Enclosure: TEFC			
<b>Nameplate Data</b>			<b>460 V, 60 Hz: High Voltage Connection</b>				
Rated Output (HP)	1	Full Load Torque	4.51 LB-FT				
Volts	230/460	Start Configuration	direct on line				
Full Load Amps	3.6/1.8	Breakdown Torque	15.3 LB-FT				
R.P.M.	1155	Pull-up Torque	11.1 LB-FT				
Hz	60 Phase	3	Locked-rotor Torque	11.9 LB-FT			
NEMA Design Code	B	KVA Code	K	Starting Current	10.8 A		
Service Factor (S.F.)	1.15	No-load Current	1.21 A				
NEMA Nom. Eff.	82.5	Power Factor	64	Line-line Res. @ 25°C	16.1 Ω		
Rating - Duty	40C AMB-CONT		Temp. Rise @ Rated Load	47°C			
S.F. Amps			Temp. Rise @ S.F. Load	56°C			
			Locked-rotor Power Factor	41.5			
			Rotor inertia	0.155 lb-ft <sup>2</sup>			

**Load Characteristics 460 V, 60 Hz, 1 HP**

% of Rated Load	25	50	75	100	125	150	S.F.
Power Factor	27	43	55	64	70	75	68
Efficiency	69.2	79.4	82.1	82.7	82	80.4	82.4
Speed	1190	1181	1170	1159	1146	1130	1151
Line amperes	1.25	1.36	1.53	1.75	2.02	2.33	1.91

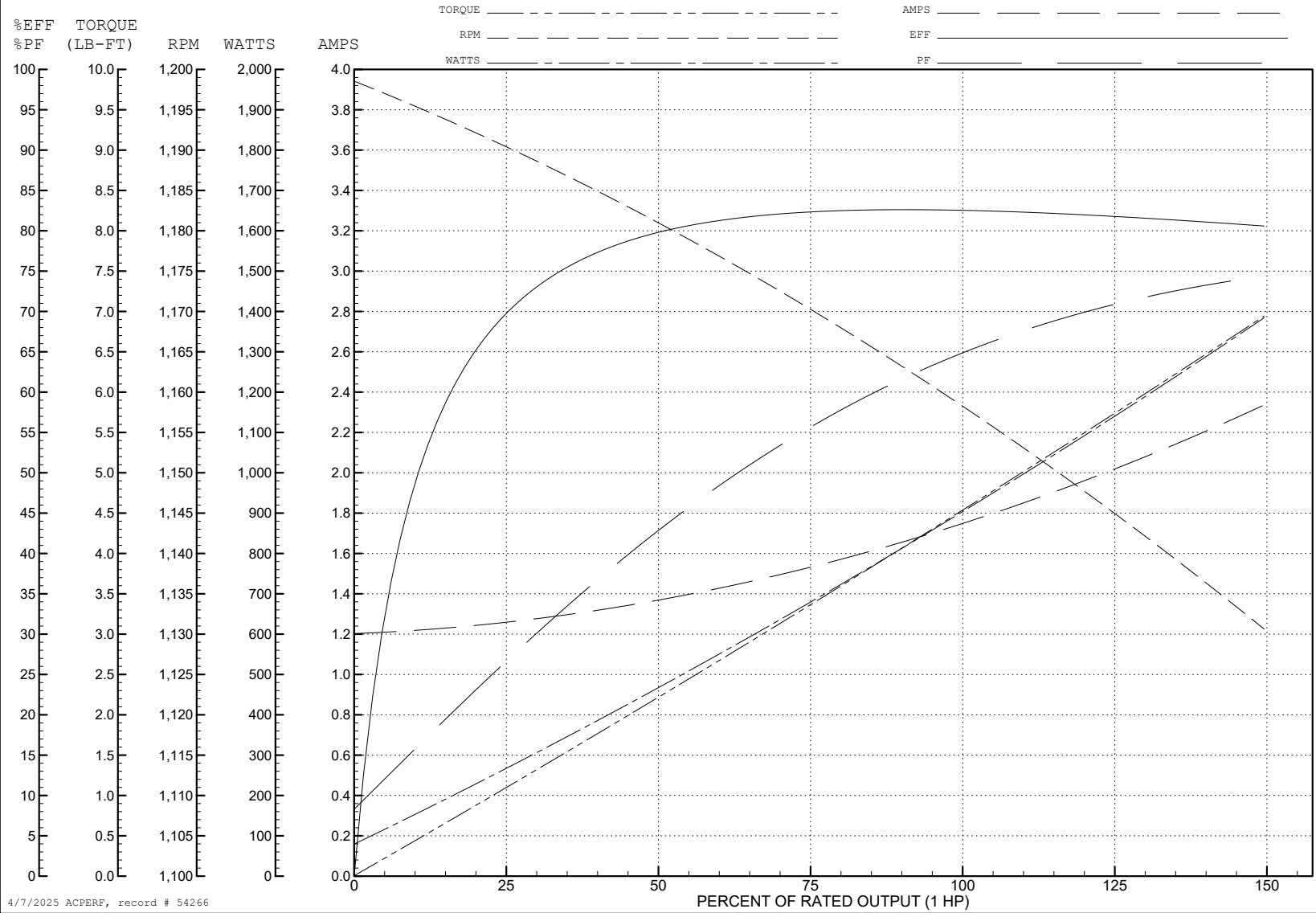
ABB Motors and Mechanical Inc.

WINDING # 35WGM497

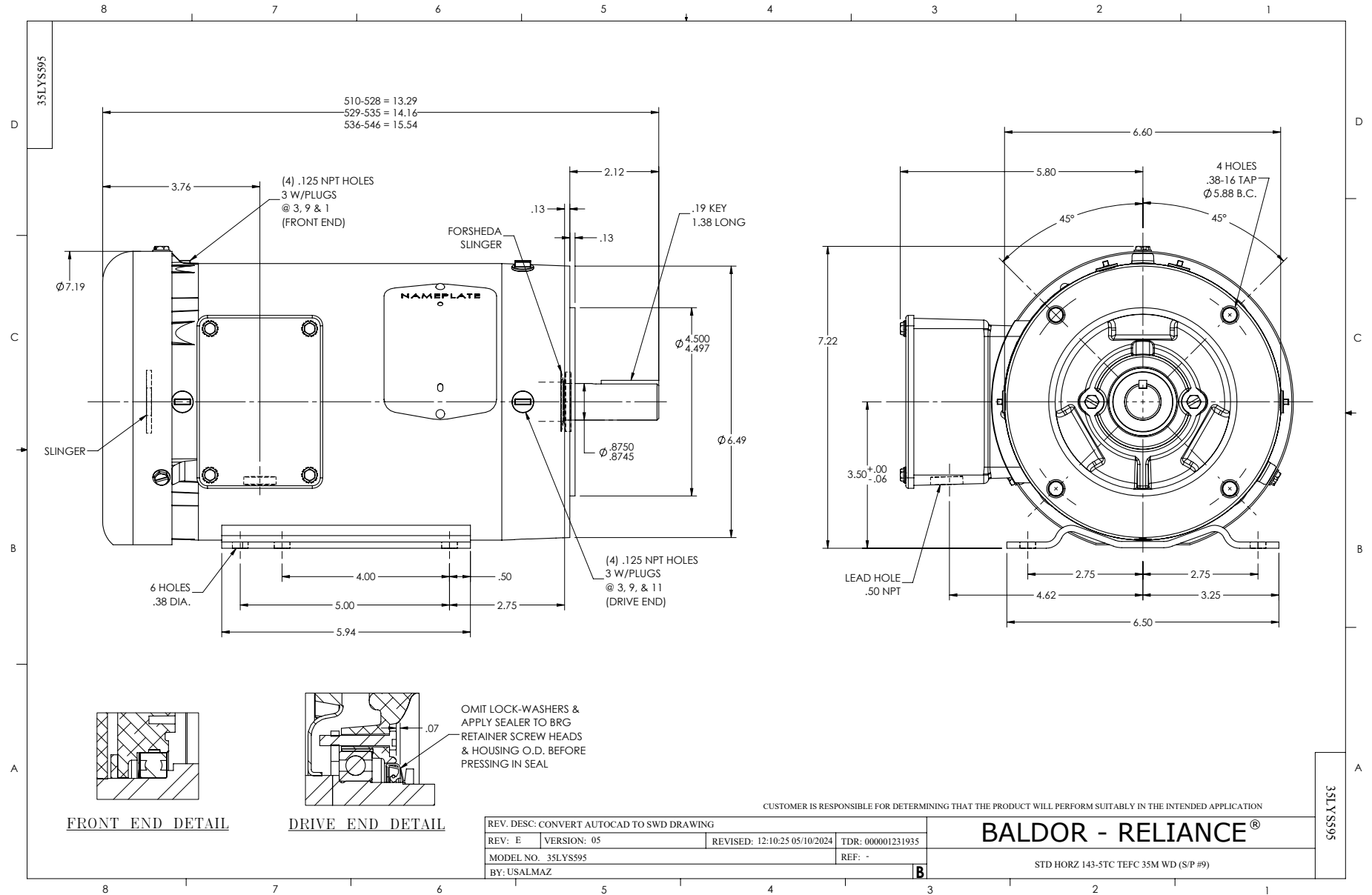
Typical performance - not guaranteed values.

1 HP 3 PH 60 HZ 1155 RPM 460 V 3526M

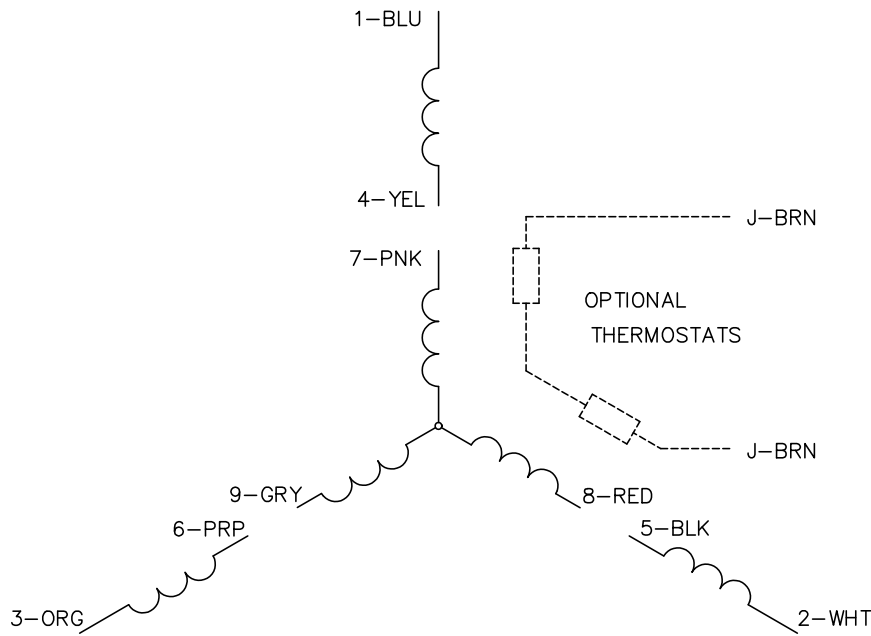
TORQUES (LB-FT): PO=15.3 PU=11.1 LR=11.9 LRA=10.8



4/7/2025 ACPERF, record # 54266



CD0005



LOW VOLTAGE  
(2Y)



LINE

HIGH VOLTAGE  
(1Y)



LINE

NOTES:

1. INTERCHANGE ANY TWO LINE LEADS TO REVERSE ROTATION.
2. OPTIONAL THERMOSTATS ARE PROVIDED WHEN SPECIFIED.
3. ACTUAL NUMBER OF INTERNAL PARALLEL CIRCUITS MAY BE A MULTIPLE OF THOSE SHOWN ABOVE.
4. LEAD COLORS ARE OPTIONAL. LEADS MUST ALWAYS BE NUMBERED AS SHOWN.

CD0005

REV. DESC: REVISE TO SHOW OPTIONAL COLORS			
REV. LTR: E	BY: JLP	REVISED: 01/19/99 10:15	TDR: 0171435
S00000		FILE: AAA00005140	MDL: -
		MTL: -	

**BALDOR ELECTRIC Co.**

3PH, DV, 9 LEADS