

BALDOR • RELIANCE

Customer information packet

CEWDM3705T

3HP, 865RPM, 3PH, 60HZ, 215TC, TEFC, F1

Class - None

Division - Not Applicable

Copyright © All product information within this document is subject to ABB Motors and Mechanical Inc. copyright © protection, unless otherwise noted.

4/7/2025 9:03:56 AM

Specifications

| | |
|--------------------------------|---|
| Enclosure | TEFC |
| Frame | 215TC |
| Frame Material | Steel |
| Frequency | 60.00 Hz |
| Haz Area Class and Group | None |
| Haz Area Division | Not Applicable |
| Motor Letter Type | Three Phase |
| Output @ Frequency | 3.000 HP @ 60 HZ |
| Phase | 3 |
| Synchronous Speed @ Frequency | 900 RPM @ 60 HZ |
| Voltage @ Frequency | 230.0 V @ 60 HZ 460.0 V @ 60 HZ |
| Agency Approvals | CSA CSA EEV NEMA PREMIUM UR |
| Ambient Temperature | 40 °C |
| Auxillary Box | No Auxillary Box |
| Auxillary Box Lead Termination | None |
| Base Indicator | Rigid |
| Bearing Grease Type | Polyrex EM (-20F +300F) |
| Blower | None |
| Current @ Voltage | 10.400 A @ 230.0 V 5.200 A @ 460.0 V |
| Design Code | B |
| Drip Cover | No Drip Cover |
| Duty Rating | CONT |
| Efficiency @ 100% Load | 86.5 % |
| Electrically Isolated Bearing | Not Electrically Isolated |
| Feedback Device | NO FEEDBACK |
| Heater Indicator | No Heater |
| High Voltage Full Load Amps | 5.2 a |

Part detail

| | |
|--------------|------------|
| Revision | B |
| Type | AC |
| Mech. spec. | |
| Base | |
| Status | PRD/A |
| Elec. spec. | 37WGT944 |
| Layout | 37LYE599 |
| Eff. date | 02-14-2024 |
| CD Diagram | CD0005 |
| Poles | 08 |
| Leads | 9#14 |
| Proprietary | False |
| Created date | 12-04-2019 |

| | |
|-----------------------------------|-----------------------|
| Insulation Class | F |
| Inverter Code | Not Inverter |
| KVA Code | H |
| Lifting Lugs | Standard Lifting Lugs |
| Locked Bearing Indicator | Locked Bearing |
| Motor Lead Termination | Flying Leads |
| Motor Standards | NEMA |
| Motor Type | 3744M |
| Mounting Arrangement | F1 |
| Number of Poles | 8 |
| Overall Length | 19.78 IN |
| Power Factor | 62 |
| Product Family | Wash Down |
| Pulley Face Code | C-Face |
| Rodent Screen | None |
| Service Factor | 1.15 |
| Shaft Diameter | 1.375 IN |
| Shaft Ground Indicator | No Shaft Grounding |
| Shaft Rotation | Reversible |
| Speed | 865 rpm |
| Speed Code | Single Speed |
| Starting Method | Direct on line |
| Thermal Device - Bearing | None |
| Thermal Device - Winding | None |
| Vibration Sensor Indicator | No Vibration Sensor |
| Winding Thermal 1 | None |
| Winding Thermal 2 | None |

Nameplate

| NP1669L | | | | | | | | | |
|---------------------|------------------------|-------------|-----------|------------|---|--------------|---|--|--|
| CAT.NO. | CEWDM3705T | | | | | | | | |
| SPEC. | 37-0000-0175 | | | | | | | | |
| HP | 3 | | | | | | | | |
| VOLTS | 230/460 | | | | | | | | |
| AMP | 10.4/5.2 | | | | | | | | |
| RPM | 865 | | | | | | | | |
| FRAME | 215TC | | HZ | 60 | | PH | 3 | | |
| SER.F. | 1.15 | CODE | H | DES | B | CLASS | F | | |
| NEMA-NOM-EFF | 86.5 | PF | 62 | | | | | | |
| RATING | 40C AMB-CONT | | | | | | | | |
| CC | 010A | | | | | | | | |
| DE | 6307 | ODE | 6206 | | | | | | |
| ENCL | TEFC | SN | | | | | | | |
| BLANK | 10:1CT, 10:1VT, 1.00SF | | | | | | | | |

AC Induction Motor Performance Data

Record # 49977

Typical performance - not guaranteed values

| Winding: 37WGT944-R007 | | Type: 3744M | | Enclosure: TEFC | |
|-------------------------------|--------------------------|----------------------------|--|-------------------------|--|
| Nameplate Data | | | 460 V, 60 Hz: High Voltage Connection | | |
| Rated Output (HP) | 3 | Full Load Torque | 18.3 LB-FT | | |
| Volts | 230/460 | Start Configuration | direct on line | | |
| Full Load Amps | 10.4/5.2 | Breakdown Torque | 49 LB-FT | | |
| R.P.M. | 865 | Pull-up Torque | 27.6 LB-FT | | |
| Hz | 60 Phase | 3 | Locked-rotor Torque | 30.6 LB-FT | |
| NEMA Design Code | B KVA Code | H | Starting Current | 25.6 A | |
| Service Factor (S.F.) | 1.15 | No-load Current | 3.21 A | | |
| NEMA Nom. Eff. | 86.5 Power Factor | 62 | Line-line Res. @ 25°C | 3.5 Ω | |
| Rating - Duty | 40C AMB-CONT | | Temp. Rise @ Rated Load | 34°C | |
| S.F. Amps | | | Temp. Rise @ S.F. Load | 41°C | |
| | | | Locked-rotor Power Factor | 33.3 | |
| | | | Rotor inertia | 1.09 LB-FT ² | |

Load Characteristics 460 V, 60 Hz, 3 HP

| % of Rated Load | 25 | 50 | 75 | 100 | 125 | 150 | S.F. |
|------------------------|-----------|-----------|-----------|------------|------------|------------|-------------|
| Power Factor | 27 | 43 | 55 | 62 | 66 | 69 | 64 |
| Efficiency | 78.9 | 85.6 | 87 | 86.8 | 85.6 | 83 | 86.1 |
| Speed | 891 | 884 | 875 | 865 | 853 | 840 | 858 |
| Line amperes | 3.39 | 3.82 | 4.45 | 5.25 | 6.18 | 7.3 | 5.81 |

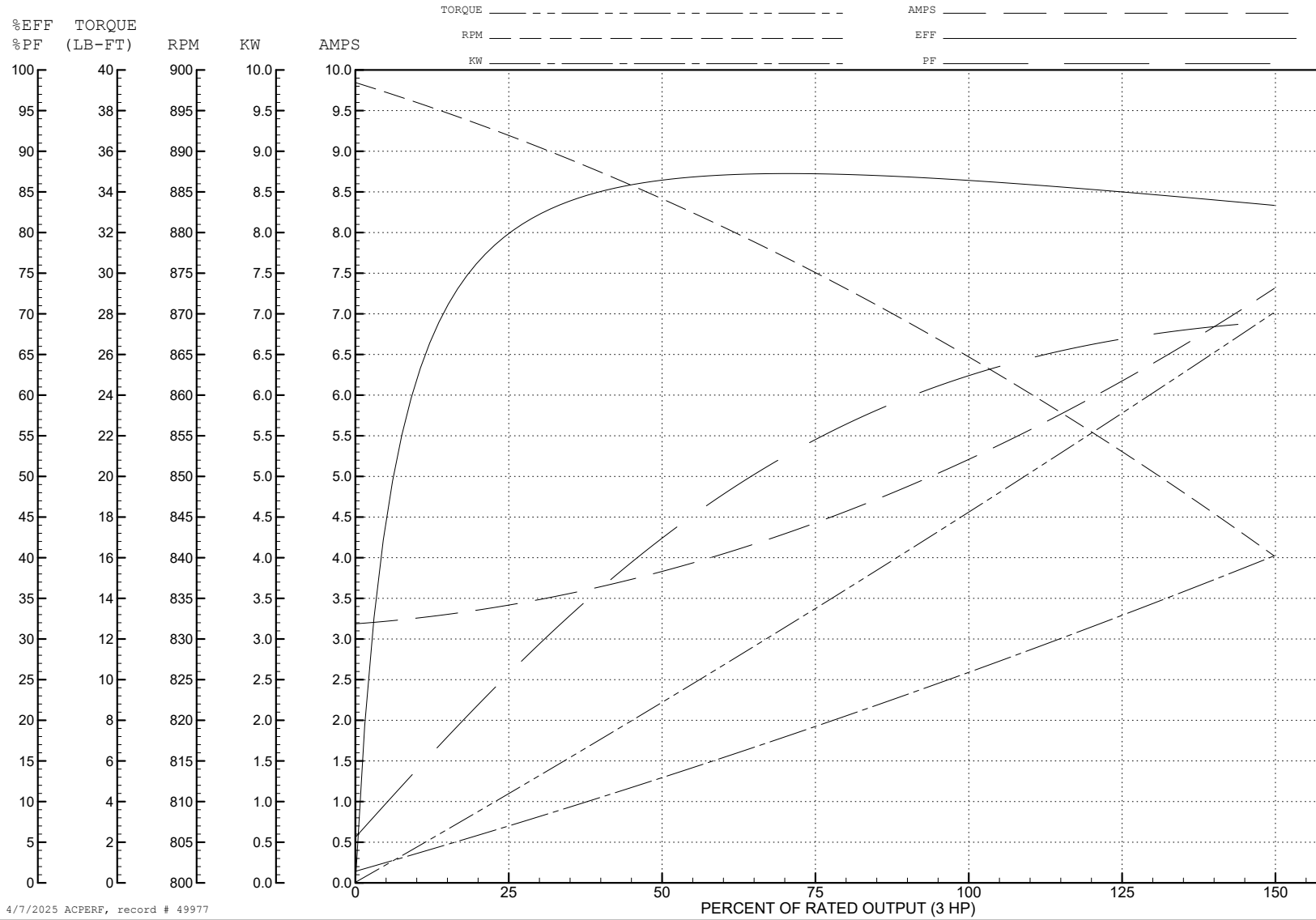
ABB Motors and Mechanical Inc.

WINDING # 37WGT944

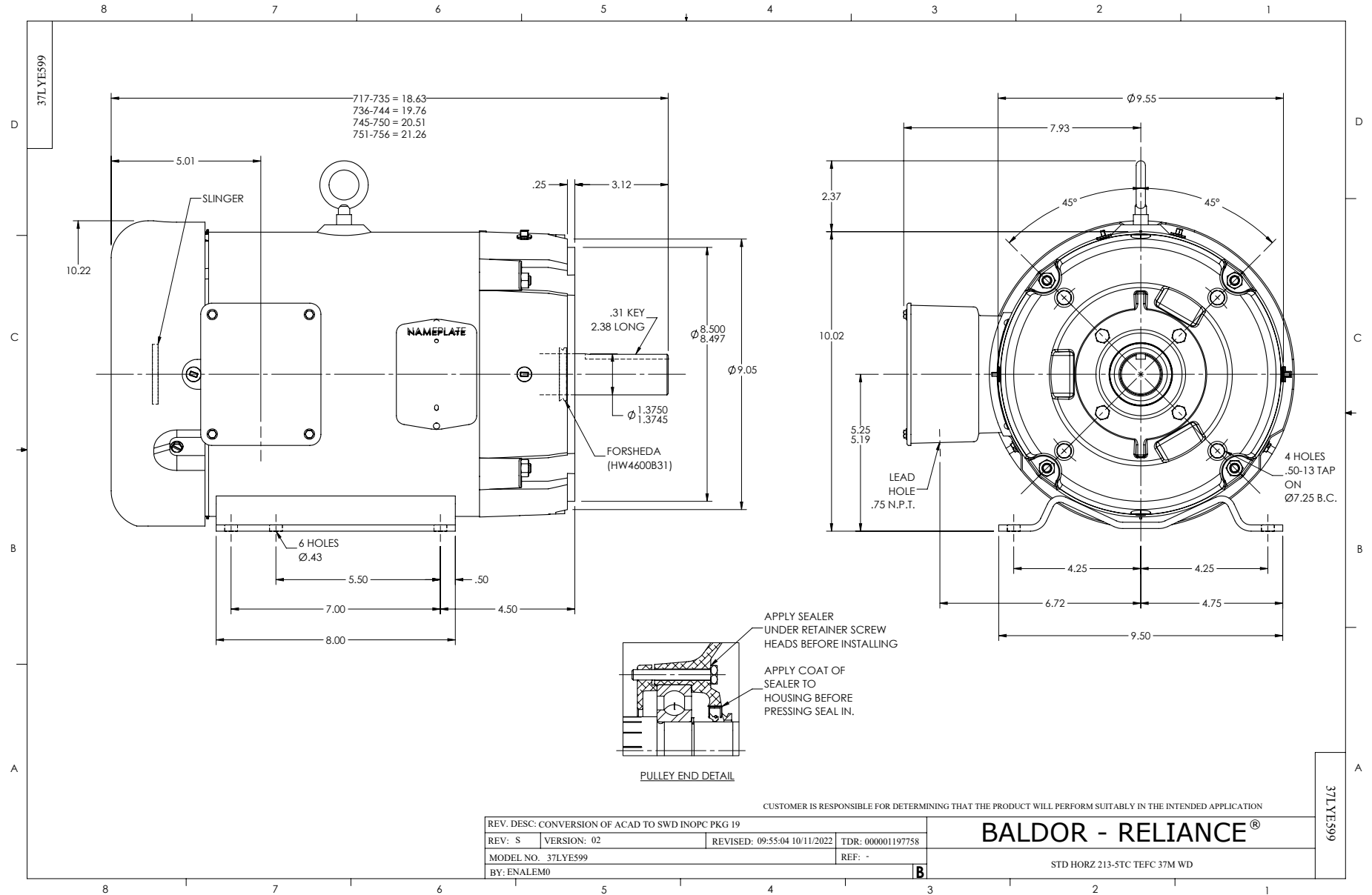
3 HP 3 PH 60 HZ 865 RPM 460 V 3744M

Typical performance - not guaranteed values.

TORQUES (LB-FT): PO=49 PU=27.6 LR=30.6 LRA=25.6



4/7/2025 ACPERF, record # 49977



CD0005



LOW VOLTAGE
(2Y)



LINE

HIGH VOLTAGE
(1Y)



LINE

NOTES:

1. INTERCHANGE ANY TWO LINE LEADS TO REVERSE ROTATION.
2. OPTIONAL THERMOSTATS ARE PROVIDED WHEN SPECIFIED.
3. ACTUAL NUMBER OF INTERNAL PARALLEL CIRCUITS MAY BE A MULTIPLE OF THOSE SHOWN ABOVE.
4. LEAD COLORS ARE OPTIONAL. LEADS MUST ALWAYS BE NUMBERED AS SHOWN.

CD0005

| | | | |
|---|---------|-------------------------|--------------|
| REV. DESC: REVISE TO SHOW OPTIONAL COLORS | | | |
| REV. LTR: E | BY: JLP | REVISED: 01/19/99 10:15 | TDR: 0171435 |
| S00000 | | FILE: AAA00005140 | MDL: - |
| | | MTL: - | |

BALDOR ELECTRIC Co.

3PH, DV, 9 LEADS