

BALDOR • RELIANCE

Customer information packet

CFSWDM3711T-E-G

10HP, 3500RPM, 3PH, 60HZ, 215TC, 3744M, TEFC, F

Class - None

Division - Not Applicable

Copyright © All product information within this document is subject to ABB Motors and Mechanical Inc. copyright © protection, unless otherwise noted.

4/7/2025 9:07:05 AM

Specifications

| | |
|--------------------------------|--|
| Enclosure | TEFC |
| Frame | 215TC |
| Frame Material | Stainless Steel |
| Frequency | 60.00 Hz |
| Haz Area Class and Group | None |
| Haz Area Division | Not Applicable |
| Motor Letter Type | Three Phase |
| Output @ Frequency | 10.000 HP @ 60 HZ |
| Phase | 3 |
| Synchronous Speed @ Frequency | 3600 RPM @ 60 HZ |
| Voltage @ Frequency | 460.0 V @ 60 HZ 230.0 V @ 60 HZ |
| Agency Approvals | CSA EEV NEMA PREMIUM NEMA_PREMIUM UR |
| Ambient Temperature | 40 °C |
| Auxillary Box | No Auxillary Box |
| Auxillary Box Lead Termination | None |
| Base Indicator | Rigid |
| Bearing Grease Type | Polyrex EM (-20F +300F) |
| Blower | None |
| Current @ Voltage | 23.000 A @ 208.0 V 21.200 A @ 230.0 V 10.600 A @ 460.0 V |
| Design Code | A |
| Drip Cover | No Drip Cover |
| Duty Rating | CONT |
| Efficiency @ 100% Load | 91.7 % |
| Electrically Isolated Bearing | Not Electrically Isolated |
| Feedback Device | NO FEEDBACK |
| Heater Indicator | No Heater |

Part detail

| | |
|--------------|--------------|
| Revision | B |
| Type | AC |
| Mech. spec. | |
| Base | |
| Status | PRD/A |
| Elec. spec. | 37WGS137 |
| Layout | 37LY-000-395 |
| Eff. date | 08-30-2023 |
| CD Diagram | CD0005 |
| Poles | 02 |
| Leads | 9#14 |
| Proprietary | False |
| Created date | 10-08-2021 |

| | |
|-----------------------------|------------------------|
| High Voltage Full Load Amps | 10.6 a |
| Insulation Class | H |
| Inverter Code | Inverter Duty |
| KVA Code | L |
| Lifting Lugs | Standard Lifting Lugs |
| Locked Bearing Indicator | Locked Bearing |
| Motor Lead Termination | Flying Leads |
| Motor Standards | NEMA |
| Motor Type | 3744M |
| Mounting Arrangement | F1 |
| Number of Poles | 2 |
| Overall Length | 20.68 IN |
| Power Factor | 94 |
| Product Family | WD All SS Encapsulated |
| Pulley End Bearing Type | Sealed Bearing |
| Pulley Face Code | C-Face |
| Rodent Screen | None |
| Service Factor | 1.15 |
| Shaft Diameter | 1.375 IN |
| Shaft Ground Indicator | Shaft Grounding |
| Shaft Rotation | Reversible |
| Speed | 3500 rpm |
| Speed Code | Single Speed |
| Starting Method | Direct on line |
| Thermal Device - Bearing | None |
| Thermal Device - Winding | None |
| Vibration Sensor Indicator | No Vibration Sensor |
| Winding Thermal 1 | None |
| Winding Thermal 2 | None |

Nameplate

| NP4292K01 | | | | | | | | | |
|-----------------------|--------------------|-------------|-----------------------|-------------|---|--------------|---|--|--|
| CAT.NO. | CFSWDM3711T-E-G | | | | | | | | |
| SPEC. | 37-0000-0431 | | | | | | | | |
| HP | 10 | | | | | | | | |
| VOLTS | 230/460 | | | | | | | | |
| AMPS | 21.2/10.6 | | | | | | | | |
| R.P.M. | 3500 | | | | | | | | |
| FRAME | 215TC | | HZ | 60 | | PH | 3 | | |
| SER.F. | 1.15 | CODE | L | DES. | A | CLASS | H | | |
| NEMA NOM. EFF. | 91.7 | | P.F. | 94 | | | | | |
| RATING | 40C AMB-CONT | | | | | | | | |
| CC | 010A | | USABLE AT 208V | N/A | | | | | |
| DE | 6307 | | ODE | 6307 | | | | | |
| ENCL | TEFC | SN | | | | | | | |
| | 4:1CT, 10:1VT IP69 | | | | | | | | |

AC Induction Motor Performance Data

Record # 57389

Typical performance - not guaranteed values

| Winding: 37WGS137-R011 | | Type: 3744M | | Enclosure: TEFC | |
|------------------------|-------------------|--------------|--|-----------------|--------------------------|
| Nameplate Data | | | 460 V, 60 Hz: High Voltage Connection | | |
| Rated Output (HP) | | 10 | Full Load Torque | | 15 LB-FT |
| Volts | | 230/460 | Start Configuration | | direct on line |
| Full Load Amps | | 21.2/10.6 | Breakdown Torque | | 89.4 LB-FT |
| R.P.M. | | 3500 | Pull-up Torque | | 39 LB-FT |
| Hz | 60 Phase | 3 | Locked-rotor Torque | | 46.5 LB-FT |
| NEMA Design Code | A KVA Code | L | Starting Current | | 124 A |
| Service Factor (S.F.) | | 1.15 | No-load Current | | 4.28 A |
| NEMA Nom. Eff. | 91.7 Power Factor | 94 | Line-line Res. @ 25°C | | 0.659 Ω |
| Rating - Duty | | 40C AMB-CONT | Temp. Rise @ Rated Load | | 67°C |
| S.F. Amps | | | Temp. Rise @ S.F. Load | | 82°C |
| | | | Locked-rotor Power Factor | | 31.5 |
| | | | Rotor inertia | | 0.402 LB-FT ² |

Load Characteristics 460 V, 60 Hz, 10 HP

| % of Rated Load | 25 | 50 | 75 | 100 | 125 | 150 | S.F. |
|-----------------|------|------|------|------|------|------|------|
| Power Factor | 56 | 77 | 86 | 91 | 91 | 92 | 91 |
| Efficiency | 81.8 | 88.7 | 90.2 | 91 | 90.1 | 89.7 | 90.5 |
| Speed | 3579 | 3557 | 3535 | 3510 | 3486 | 3459 | 3496 |
| Line amperes | 4.99 | 6.82 | 8.93 | 11.3 | 14.2 | 17 | 13 |

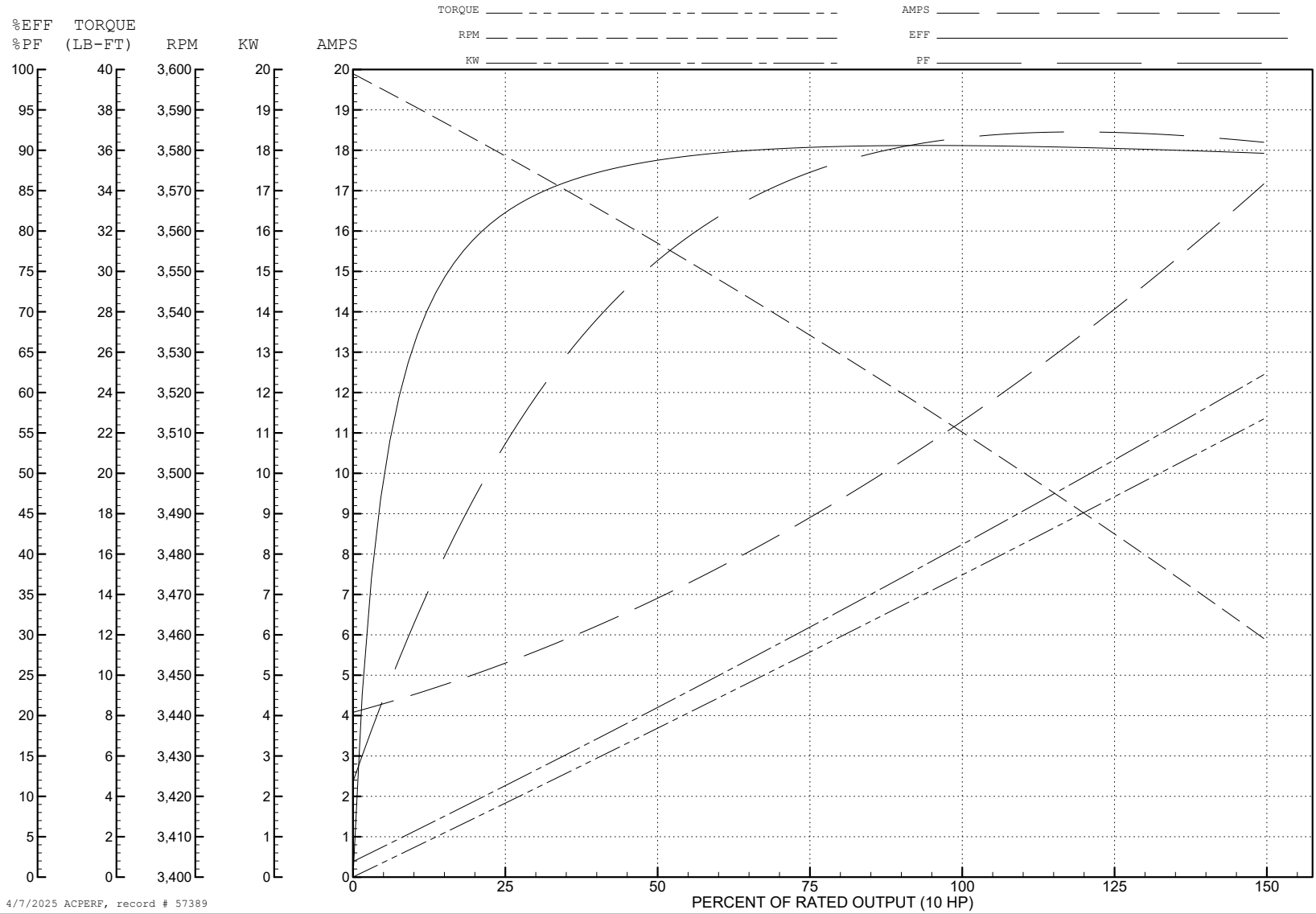
ABB Motors and Mechanical Inc.

WINDING # 37WGS137

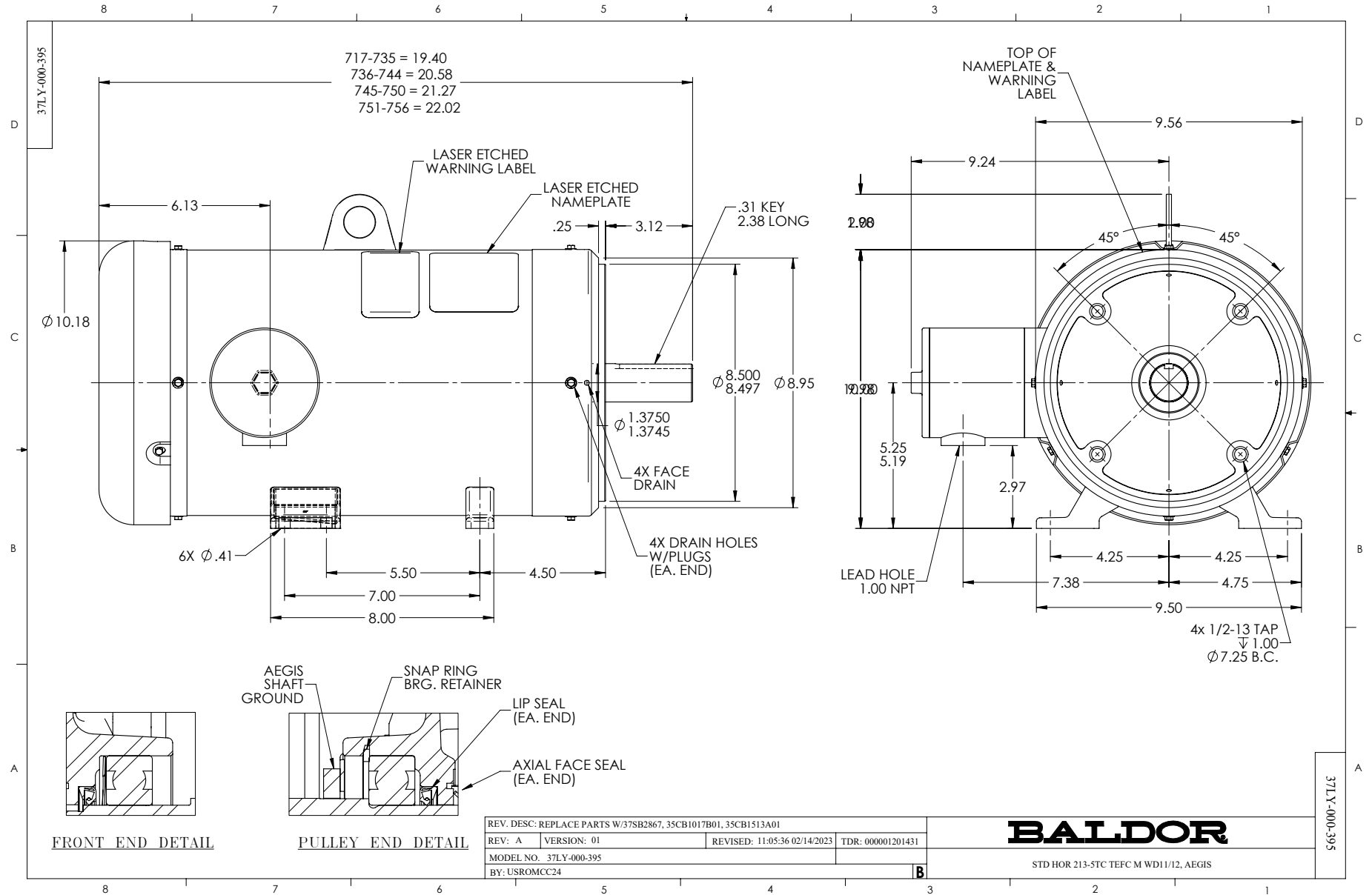
Typical performance - not guaranteed values.

10 HP 3 PH 60 HZ 3500 RPM 460 V 3744M

TORQUES (LB-FT): PO=89.4 PU=39 LR=46.5 LRA=124



4/7/2025 ACPERF, record # 57389



CD0005

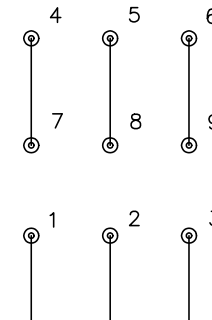


LOW VOLTAGE
(2Y)



LINE

HIGH VOLTAGE
(1Y)



LINE

NOTES:

1. INTERCHANGE ANY TWO LINE LEADS TO REVERSE ROTATION.
2. OPTIONAL THERMOSTATS ARE PROVIDED WHEN SPECIFIED.
3. ACTUAL NUMBER OF INTERNAL PARALLEL CIRCUITS MAY BE A MULTIPLE OF THOSE SHOWN ABOVE.
4. LEAD COLORS ARE OPTIONAL. LEADS MUST ALWAYS BE NUMBERED AS SHOWN.

| | | | |
|---|---------|-------------------------|--------------|
| REV. DESC: REVISE TO SHOW OPTIONAL COLORS | | | |
| REV. LTR: E | BY: JLP | REVISED: 01/19/99 10:15 | TDR: 0171435 |
| S00000 | | FILE: AAA00005140 | MDL: - |
| | | MTL: - | |

BALDOR ELECTRIC Co.

3PH, DV, 9 LEADS

CD0005