

**BALDOR • RELIANCE**

---

# Customer information packet

## CSWDM3537-5

.5HP, 3450RPM, 3PH, 60HZ, 56C, 3512M, TENV, F1

Class - None

Division - Not Applicable

Copyright © All product information within this document is subject to ABB Motors and Mechanical Inc. copyright © protection, unless otherwise noted.

4/7/2025 9:18:29 AM

## Specifications

Enclosure	TENV
Frame	56C
Frame Material	Stainless Steel
Frequency	60.00 Hz
Haz Area Class and Group	None
Haz Area Division	Not Applicable
Motor Letter Type	Three Phase
Output @ Frequency	.500 HP @ 60 HZ
Phase	3
Synchronous Speed @ Frequency	3600 RPM @ 60 HZ
Voltage @ Frequency	575.0 V @ 60 HZ
Ambient Temperature	40 °C
Auxillary Box	No Auxillary Box
Auxillary Box Lead Termination	None
Base Indicator	Rigid
Bearing Grease Type	Polyrex EM (-20F +300F)
Blower	None
Current @ Voltage	.650 A @ 575.0 V
Design Code	B
Drip Cover	No Drip Cover
Duty Rating	CONT
Efficiency @ 100% Load	70.0 %
Electrically Isolated Bearing	Not Electrically Isolated
Feedback Device	NO FEEDBACK
Front Shaft Indicator	None
Heater Indicator	No Heater
High Voltage Full Load Amps	0.7 a
Insulation Class	F
Inverter Code	Not Inverter
KVA Code	L
Lifting Lugs	No Lifting Lugs
Locked Bearing Indicator	Locked Bearing

## Part detail

Revision	F
Type	AC
Mech. spec.	35S630
Base	
Status	PRD/A
Elec. spec.	35WGW038
Layout	35LYS630
Eff. date	09-11-2023
CD Diagram	CD0006
Poles	02
Leads	3#18
Proprietary	False
Created date	05-23-2018

<b>Motor Lead Quantity/Wire Size</b>	3 @ 18 AWG
<b>Motor Lead Termination</b>	Flying Leads
<b>Motor Standards</b>	NEMA
<b>Motor Type</b>	3512M
<b>Mounting Arrangement</b>	F1
<b>Number of Poles</b>	2
<b>Overall Length</b>	11.06 IN
<b>Power Factor</b>	76
<b>Product Family</b>	Wash Down Paint Free
<b>Pulley End Bearing Type</b>	Sealed Bearing
<b>Pulley Face Code</b>	C-Face
<b>Pulley Shaft Indicator</b>	Standard
<b>Rodent Screen</b>	None
<b>RoHS Status</b>	ROHS COMPLIANT
<b>Service Factor</b>	1.00
<b>Shaft Diameter</b>	0.625 IN
<b>Shaft Ground Indicator</b>	No Shaft Grounding
<b>Shaft Rotation</b>	Reversible
<b>Shaft Slinger Indicator</b>	No Slinger
<b>Speed</b>	3450 rpm
<b>Speed Code</b>	Single Speed
<b>Starting Method</b>	Direct on line
<b>Thermal Device - Winding</b>	None
<b>Vibration Sensor Indicator</b>	No Vibration Sensor
<b>Winding Thermal 1</b>	None
<b>Winding Thermal 2</b>	None

**Nameplate**

<b>NP1496L</b>									
<b>CAT.NO.</b>	CSWDM3537-5								
<b>SPEC.</b>	35S630W038G3								
<b>HP</b>	.5								
<b>VOLTS</b>	575								
<b>AMP</b>	.65								
<b>RPM</b>	3450								
<b>FRAME</b>	56C		<b>HZ</b>	60		<b>PH</b>	3		
<b>SER.F.</b>	1.00	<b>CODE</b>	L	<b>DES</b>	B	<b>CLASS</b>	F		
<b>NEMA-NOM-EFF</b>	70	<b>PF</b>	76						
<b>RATING</b>	40C AMB-CONT								
<b>CC</b>									
<b>DE</b>	6205		<b>ODE</b>	6203					
<b>ENCL</b>	TENV	<b>SN</b>							

**AC Induction Motor Performance Data**

Record # 57842

Typical performance - not guaranteed values

Winding: 35WGW038-R010		Type: 3512M		Enclosure: TENV	
<b>Nameplate Data</b>			<b>575 V, 60 Hz: Single Voltage Motor</b>		
Rated Output (HP)	.5	Full Load Torque	0.752 LB-FT		
Volts	575	Start Configuration	direct on line		
Full Load Amps	.65	Breakdown Torque	3.06 LB-FT		
R.P.M.	3450	Pull-up Torque	2.14 LB-FT		
Hz	60 Phase	3	Locked-rotor Torque	2.43 LB-FT	
NEMA Design Code	B	KVA Code	L	Starting Current	4.57 A
Service Factor (S.F.)	1	No-load Current	0.425 A		
NEMA Nom. Eff.	70	Power Factor	76	Line-line Res. @ 25°C	51.3 Ω
Rating - Duty	40C AMB-CONT		Temp. Rise @ Rated Load	63°C	
			Locked-rotor Power Factor	65.9	
			Rotor inertia	0.0332 LB-FT <sup>2</sup>	

**Load Characteristics 575 V, 60 Hz, 0.5 HP**

% of Rated Load	25	50	75	100	125	150
Power Factor	47	63	73	79	83	86
Efficiency	43.9	59.7	66.9	70.5	72.1	72.4
Speed	3557	3529	3501	3470	3437	3400
Line amperes	0.455	0.507	0.578	0.67	0.772	0.883

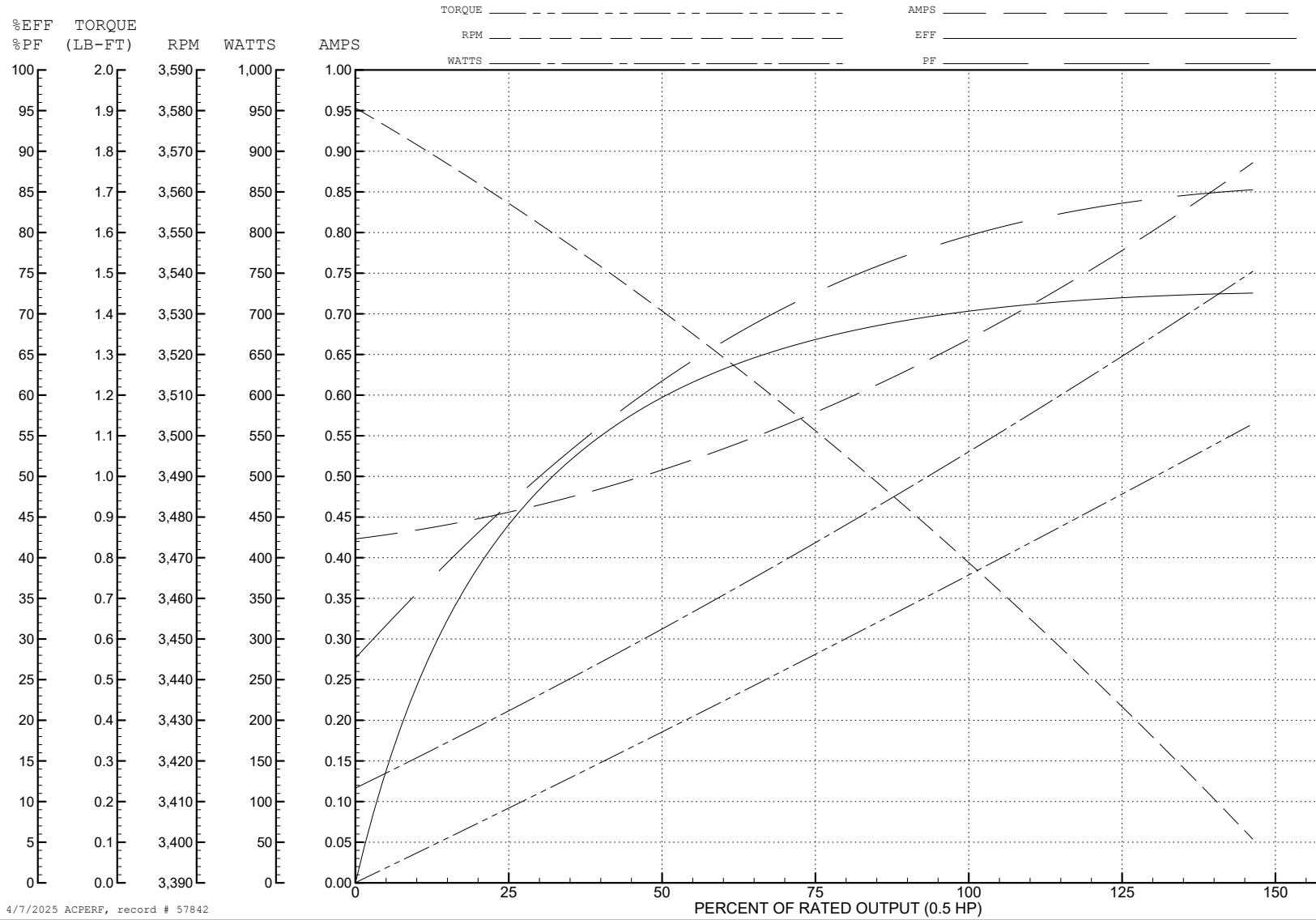
ABB Motors and Mechanical Inc.

WINDING # 35WGW038

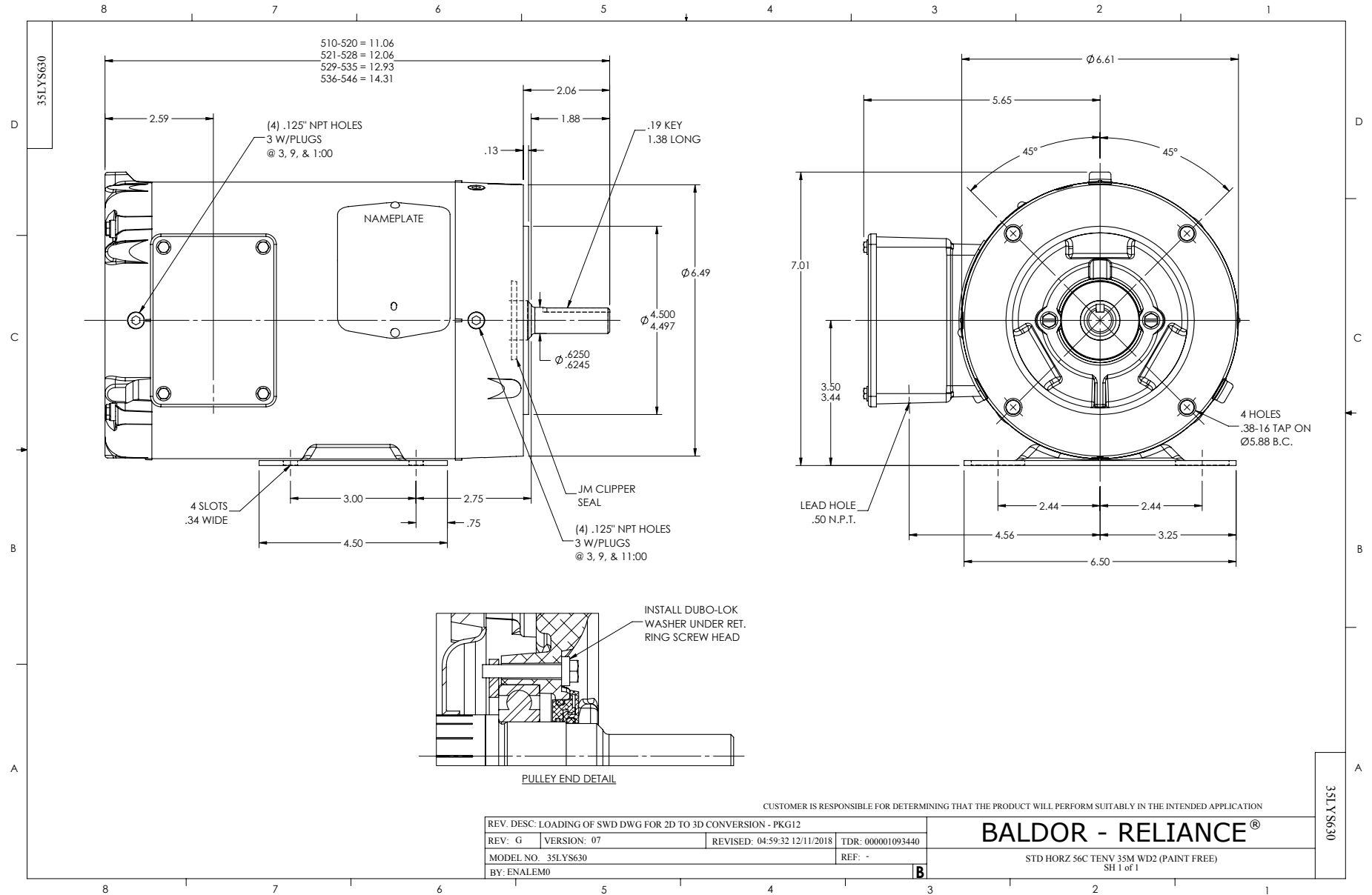
0.5 HP 3 PH 60 HZ 3450 RPM 575 V 3512M

Typical performance - not guaranteed values.

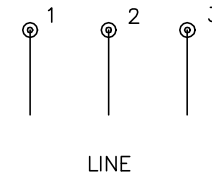
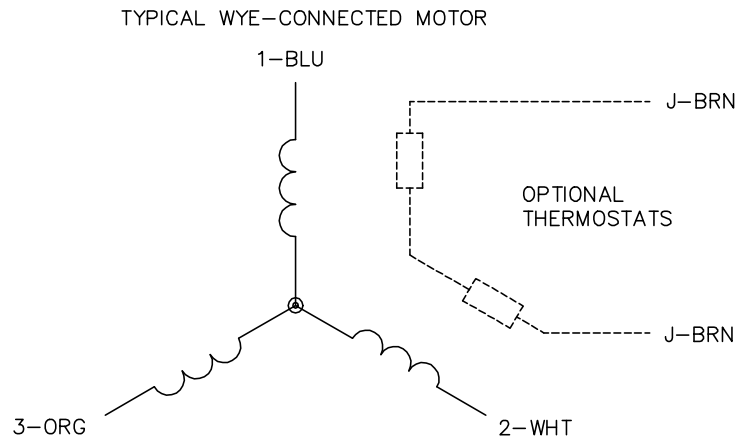
TORQUES (LB-FT): PO=3.06 PU=2.14 LR=2.43 LRA=4.57



4/7/2025 ACPERF, record # 57842



CD0006



NOTES:

1. THREE LEAD MOTOR MAY BE EITHER WYE CONNECTED OR DELTA CONNECTED.
2. INTERCHANGE ANY TWO LINE LEADS TO REVERSE ROTATION.
3. OPTIONAL THERMOSTATS ARE PROVIDED WHEN SPECIFIED.
4. ACTUAL NUMBER OF INTERNAL PARALLEL CIRCUITS MAY VARY.
5. LEAD COLORS ARE OPTIONAL. LEADS MUST BE NUMBERED AS SHOWN.

CD0006

REV. DESC: ADD CLASS CONN00000007		
REV. LTR: E	VERSION: 01	TDR: 000001099922
FILE: \AAA\00005\141	REVISED: 10:24:49 02/19/2019	BY: ENBRIRO
MTL: -	© □	

**BALDOR - RELIANCE®**

3PH, SV, 3 LEADS, WYE OR DELTA CONNECTED

SH 1 of 1