

BALDOR • RELIANCE

Customer information packet

CSWDM3538-5

0.5HP, 1770RPM, 3PH, 60HZ, 56C, 3512M, TENV, F1

Class - None

Division - Not Applicable

Copyright © All product information within this document is subject to ABB Motors and Mechanical Inc. copyright © protection, unless otherwise noted.

4/7/2025 9:18:43 AM

Specifications

Enclosure	TENV
Frame	56C
Frame Material	Stainless Steel
Frequency	60.00 Hz
Haz Area Class and Group	None
Haz Area Division	Not Applicable
Motor Letter Type	Three Phase
Output @ Frequency	.500 HP @ 60 HZ
Phase	3
Synchronous Speed @ Frequency	1800 RPM @ 60 HZ
Voltage @ Frequency	575.0 V @ 60 HZ
Agency Approvals	CSA UR
Ambient Temperature	40 °C
Auxillary Box	No Auxillary Box
Auxillary Box Lead Termination	None
Base Indicator	Rigid
Bearing Grease Type	Polyrex EM (-20F +300F)
Blower	None
Current @ Voltage	.770 A @ 575.0 V
Design Code	B
Drip Cover	No Drip Cover
Duty Rating	CONT
Efficiency @ 100% Load	80.0 %
Electrically Isolated Bearing	Not Electrically Isolated
Feedback Device	NO FEEDBACK
Front Shaft Indicator	None
Heater Indicator	No Heater
High Voltage Full Load Amps	0.8 a
Insulation Class	F
Inverter Code	Not Inverter
KVA Code	M

Part detail

Revision	B
Type	AC
Mech. spec.	35S630
Base	
Status	PRD/A
Elec. spec.	35WGG200
Layout	35LYS630
Eff. date	09-11-2023
CD Diagram	CD0006
Poles	04
Leads	3#18
Proprietary	False
Created date	03-11-2022

Lifting Lugs	No Lifting Lugs
Locked Bearing Indicator	Locked Bearing
Motor Lead Quantity/Wire Size	3 @ 18 AWG
Motor Lead Termination	Flying Leads
Motor Standards	NEMA
Motor Type	3512M
Mounting Arrangement	F1
Number of Poles	4
Overall Length	11.06 IN
Power Factor	62
Product Family	Wash Down Paint Free
Pulley End Bearing Type	Sealed Bearing
Pulley Face Code	C-Face
Pulley Shaft Indicator	Standard
Rodent Screen	None
Service Factor	1.25
Shaft Diameter	0.625 IN
Shaft Ground Indicator	No Shaft Grounding
Shaft Rotation	Reversible
Shaft Slinger Indicator	No Slinger
Speed	1770 rpm
Speed Code	Single Speed
Starting Method	Direct on line
Thermal Device - Bearing	None
Thermal Device - Winding	None
Vibration Sensor Indicator	No Vibration Sensor
Winding Thermal 1	None
Winding Thermal 2	None

Nameplate

NP1496L									
CAT.NO.	CSWDM3538-5								
SPEC.	35S630G200G1								
HP	0.5								
VOLTS	575								
AMP	0.77								
RPM	1770								
FRAME	56C		HZ	60		PH	3		
SER.F.	1.25	CODE	M	DES	B	CLASS	F		
NEMA-NOM-EFF	80	PF	62						
RATING	40C AMB-CONT								
CC									
DE	6205		ODE	6203					
ENCL	TENV	SN							
	SFA .8								

AC Induction Motor Performance Data

Record # 87485

Typical performance - not guaranteed values

Winding: 35WGG200-R004		Type: 3512M	Enclosure: TENV	
Nameplate Data			575 V, 60 Hz: Single Voltage Motor	
Rated Output (HP)	.5	Full Load Torque	1.49 LB-FT	
Volts	575	Start Configuration	direct on line	
Full Load Amps	.77	Breakdown Torque	6.26 LB-FT	
R.P.M.	1770	Pull-up Torque	3.25 LB-FT	
Hz	60	Locked-rotor Torque	4.02 LB-FT	
NEMA Design Code	B	Starting Current	5.36 A	
Service Factor (S.F.)	1.25	No-load Current	0.636 A	
NEMA Nom. Eff.	80	Line-line Res. @ 25°C	68 Ω	
Rating - Duty	40C AMB-CONT	Temp. Rise @ Rated Load	29°C	
S.F. Amps	.87	Temp. Rise @ S.F. Load	34°C	
		Locked-rotor Power Factor	71	
		Rotor inertia	0.0866 lb-ft ²	

Load Characteristics 575 V, 60 Hz, 0.5 HP

% of Rated Load	25	50	75	100	125	150	S.F.
Power Factor	27	41	52	62	69	75	57
Efficiency	56.2	70.6	76.3	78.9	79.9	79.8	77.6
Speed	1792	1786	1779	1771	1763	1755	1774
Line amperes	0.638	0.664	0.713	0.774	0.85	0.946	0.704

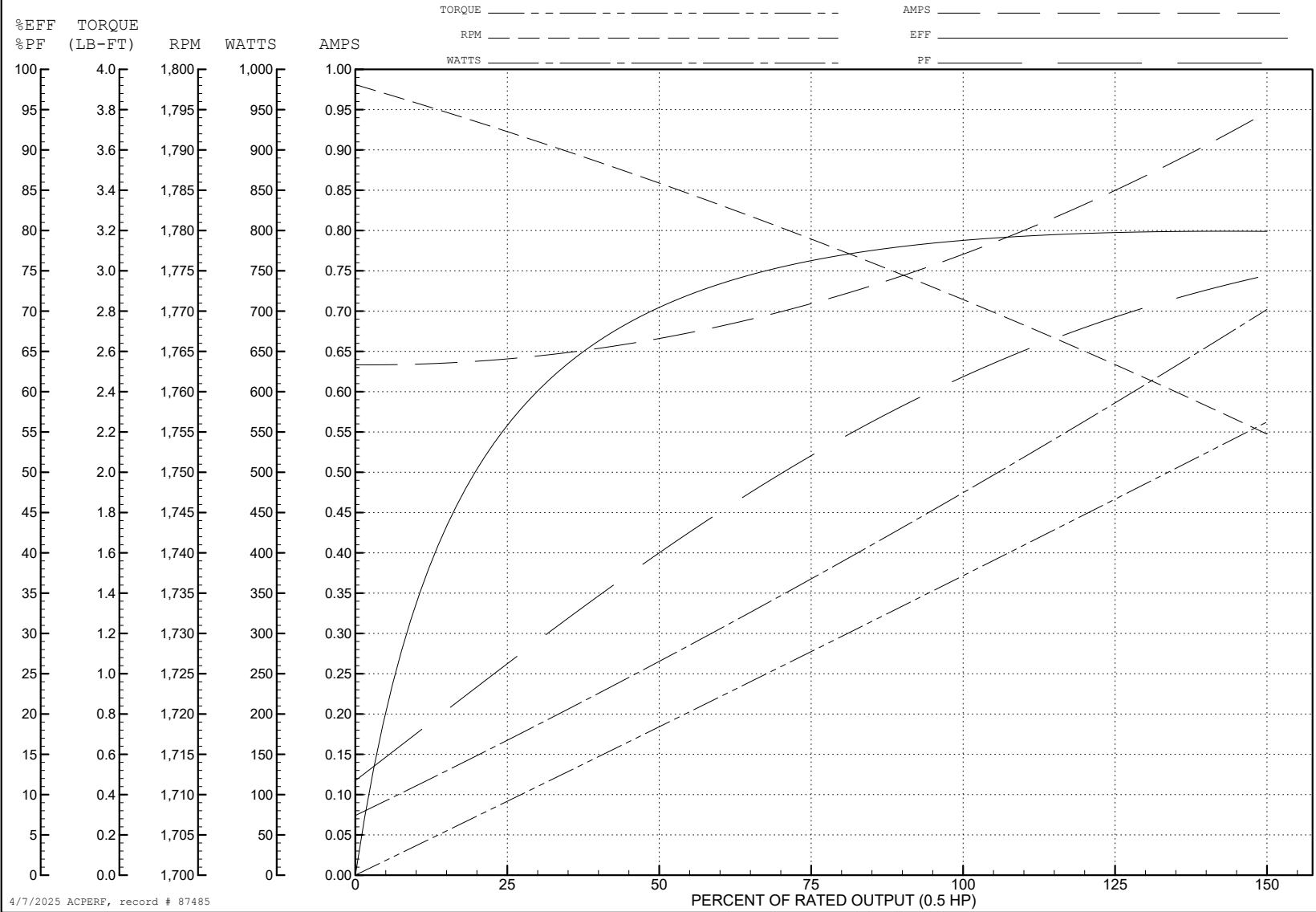
ABB Motors and Mechanical Inc.

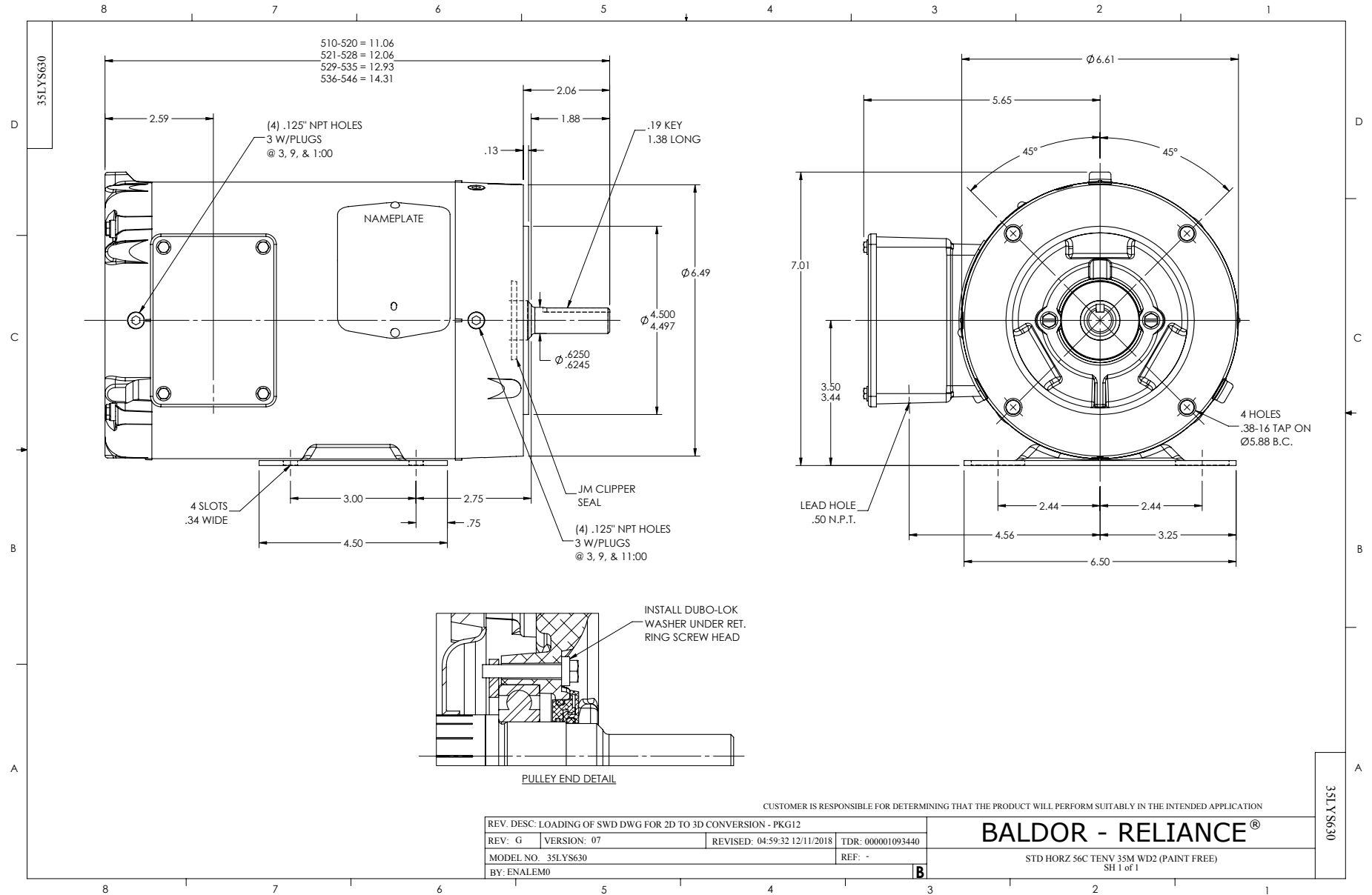
WINDING # 35WGG200

0.5 HP 3 PH 60 HZ 1770 RPM 575 V 3512M

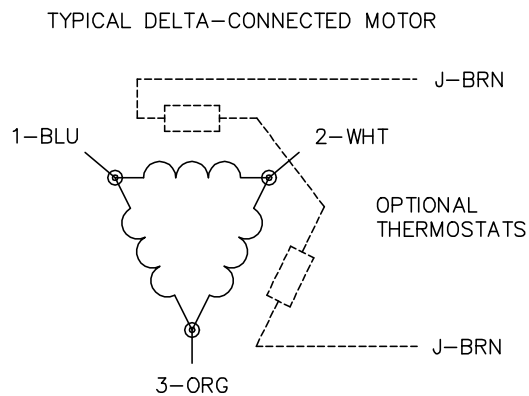
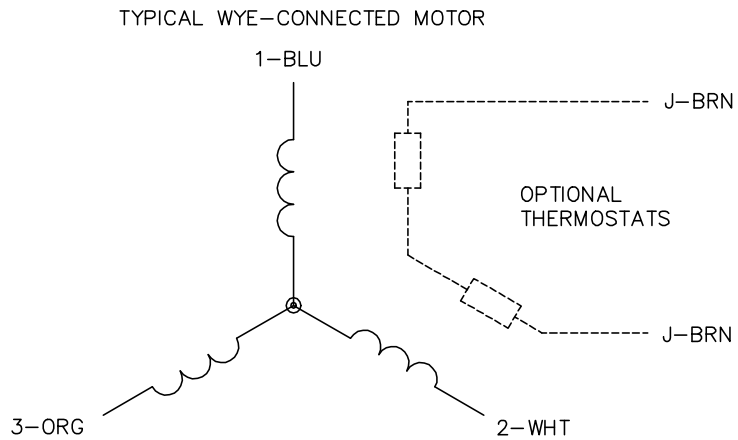
Typical performance - not guaranteed values.

TORQUES (LB-FT): PO=6.26 PU=3.25 LR=4.02 LRA=5.36





CD0006



NOTES:

1. THREE LEAD MOTOR MAY BE EITHER WYE CONNECTED OR DELTA CONNECTED.
2. INTERCHANGE ANY TWO LINE LEADS TO REVERSE ROTATION.
3. OPTIONAL THERMOSTATS ARE PROVIDED WHEN SPECIFIED.
4. ACTUAL NUMBER OF INTERNAL PARALLEL CIRCUITS MAY VARY.
5. LEAD COLORS ARE OPTIONAL. LEADS MUST BE NUMBERED AS SHOWN.

CD0006

REV. DESC: ADD CLASS CONN00000007		
REV. LTR: E	VERSION: 01	TDR: 000001099922
FILE: \AAA\00005\141	REVISED: 10:24:49 02/19/2019	BY: ENBRIRO
MTL: -		© □

BALDOR - RELIANCE®

3PH, SV, 3 LEADS, WYE OR DELTA CONNECTED

SH 1 of 1