

BALDOR • RELIANCE

Customer information packet

CXM28342T

30//25HP, 1770//1470RPM, 3PH, 60//50HZ, 286T

Class - CLI GP D; CLII GP F,G

Division - Division I

Copyright © All product information within this document is subject to ABB Motors and Mechanical Inc. copyright © protection, unless otherwise noted.

4/7/2025 9:35:36 AM

Specifications

Enclosure	XPFC
Frame	286TC
Frame Material	Iron
Frequency	50.00 Hz 60.00 Hz
Haz Area Class and Group	CLI GP D; CLII GP F,G
Haz Area Division	Division I
Motor Letter Type	Three Phase
Output @ Frequency	25.000 HP @ 50 HZ 30.000 HP @ 60 HZ
Phase	3
Synchronous Speed @ Frequency	1800 RPM @ 60 HZ
Voltage @ Frequency	460.0 V @ 60 HZ 380.0 V @ 50 HZ 230.0 V @ 60 HZ 190.0 V @ 50 HZ
Agency Approvals	CSA EEV UL
Ambient Temperature	40 °C
Auxillary Box	No Auxillary Box
Auxillary Box Lead Termination	None
Base Indicator	Rigid
Bearing Grease Type	Polyrex EM (-20F +300F)
Blower	None
Constant Torque Speed Range	6
Current @ Voltage	72.000 A @ 230.0 V 36.000 A @ 460.0 V
Design Code	B
Drip Cover	No Drip Cover
Duty Rating	CONT
Efficiency @ 100% Load	93.6 %
Electrically Isolated Bearing	Not Electrically Isolated

Part detail

Revision	B
Type	AC
Mech. spec.	
Base	
Status	PRD/A
Elec. spec.	10WGZ506
Layout	10LYE251
Eff. date	09-18-2022
CD Diagram	CD0005
Poles	04
Leads	9#10
Proprietary	False
Created date	01-08-2021

Feedback Device	NO FEEDBACK
Haz Area Temp Code	T3C
Heater Indicator	No Heater
High Voltage Full Load Amps	36.0 a
Insulation Class	B
Inverter Code	Inverter Duty
IP Rating	NONE
KVA Code	G
Lifting Lugs	Standard Lifting Lugs
Locked Bearing Indicator	Locked Bearing
Max Speed	2700 rpm
Motor Lead Termination	Flying Leads
Motor Standards	NEMA
Motor Type	1060M
Mounting Arrangement	F1
Number of Poles	4
Overall Length	28.61 IN
Power Factor	84
Product Family	Hazardous Location Motor
Pulley Face Code	C-Face
Rodent Screen	None
RoHS Status	ROHS NON-COMPLIANT
Service Factor	1.00
Shaft Diameter	1.875 IN
Shaft Ground Indicator	No Shaft Grounding
Shaft Rotation	Reversible
Speed	1770 rpm
Speed Code	Single Speed
Starting Method	Direct on line
Thermal Device - Bearing	None
Thermal Device - Winding	Normally Closed Thermostat
Vibration Sensor Indicator	No Vibration Sensor
Winding Thermal 1	None
Winding Thermal 2	None

Nameplate

NP0887XPSLEV

NO.		CC	010A		
S/N		TEMP CODE	T3C		
SPEC.	10-0000-1919	INV.TYPE	PWM		
CAT.NO.	CXM28342T	C HP FR	60	C HP TO	90
HP	30//25	CT HZ FROM	6	CT HZ TO	60
VOLTS	230/460//190/380	VT HZ FROM	6	VT HZ TO	60
AMPS	72/36	MAG CUR	27.6/13.8		
RPM	1770//1470	MX RPM	2700		
HZ	60//50	PH	3	CL	F
		NOM.EFF.	93.6		
SER.F.	1.00	DES	B	SL HZ	1
		WK2	4.79		
FRAME	286TC	RATING	40C AMB-CONT		
	1.15SF ON SINEWAVE				
	NEMA MG-1 PT.5,IP54				

AC Induction Motor Performance Data

Record # 66668

Typical performance - not guaranteed values

Winding: 10WGZ506-R011		Type: 1060M		Enclosure: XPFC	
Nameplate Data			460 V, 60 Hz: Single Voltage Motor		
Rated Output (HP)	30		Full Load Torque	88.64 LB-FT	
Volts	230/460		Start Configuration	direct on line	
Full Load Amps	72/36		Breakdown Torque	267 LB-FT	
R.P.M.	1770		Pull-up Torque	116 LB-FT	
Hz	60 Phase	3	Locked-rotor Torque	142 LB-FT	
NEMA Design Code	B KVA Code	G	Starting Current	215 A	
Service Factor (S.F.)	1		No-load Current	13.5 A	
NEMA Nom. Eff.	93.6 Power Factor	84	Line-line Res. @ 25°C	0.234 Ω	
Rating - Duty	40C AMB-CONT		Temp. Rise @ Rated Load	62°C	
			Locked-rotor Power Factor	29.7	
			Rotor inertia	4.77 LB-FT ²	

Load Characteristics 460 V, 60 Hz, 30 HP

% of Rated Load	25	50	75	100	125	150
Power Factor	48	71	80	84	85	85
Efficiency	91	94	94.3	94	93.7	92
Speed	1793	1787	1779	1772	1764	1753
Line amperes	15.8	21.1	27.8	35.6	44	53.5

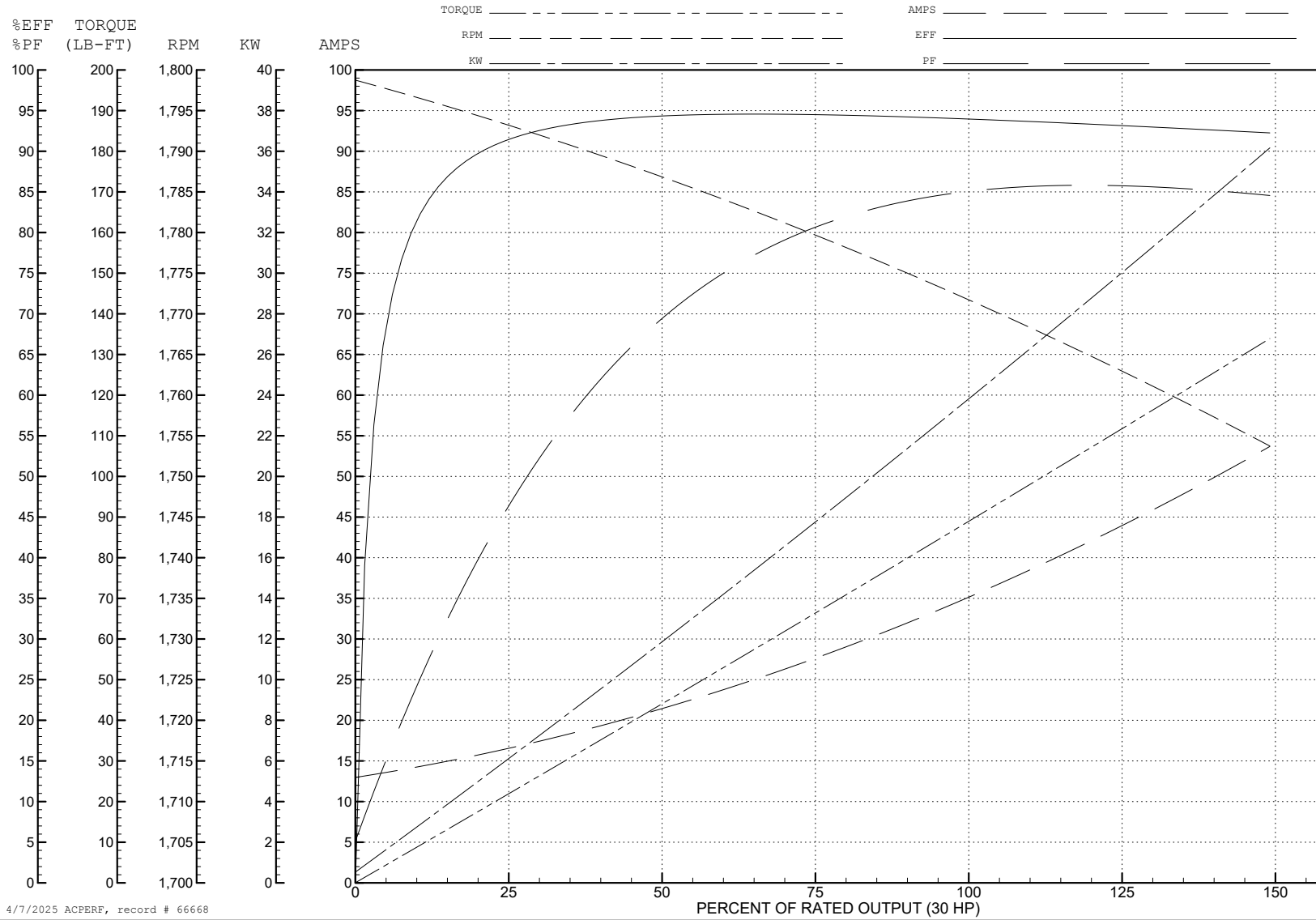
ABB Motors and Mechanical Inc.

WINDING # 10WGZ506

Typical performance - not guaranteed values.

30 HP 3 PH 60 HZ 1770 RPM 460 V 1060M

TORQUES (LB-FT): PO=267 PU=116 LR=142 LRA=215



AC Induction Motor Performance Data

Record # 86096

Typical performance - not guaranteed values

Winding: 10WGZ506-R021		Type: 1060M	Enclosure: XPFC	
Nameplate Data			380 V, 50 Hz: High Voltage Connection	
Rated Output (HP)	25	Full Load Torque	88.9 LB-FT	
Volts	190/380	Start Configuration	direct on line	
Full Load Amps	72/36	Breakdown Torque	259 LB-FT	
R.P.M.	1470	Pull-up Torque	120 LB-FT	
Hz	50 Phase	Locked-rotor Torque	146 LB-FT	
NEMA Design Code	B KVA Code	Starting Current	205 A	
Service Factor (S.F.)	1.15	No-load Current	13.26 A	
NEMA Nom. Eff.	92.6 Power Factor	Line-line Res. @ 25°C	0.234 Ω	
Rating - Duty	40C AMB-CONT	Temp. Rise @ Rated Load	63°C	
S.F. Amps		Temp. Rise @ S.F. Load	79°C	
		Locked-rotor Power Factor	32.9	
		Rotor inertia	4.77 lb-ft ²	

Load Characteristics 380 V, 50 Hz, 25 HP

% of Rated Load	25	50	75	100	125	150	S.F.
Power Factor	49	72	81	84	86	85	85
Efficiency	91.6	94.1	94.1	93.5	93.4	91.1	93.4
Speed	1493	1487	1479	1472	1464	1452	1467
Line amperes	15.58	21.02	27.86	35.89	44.62	54.56	41.1

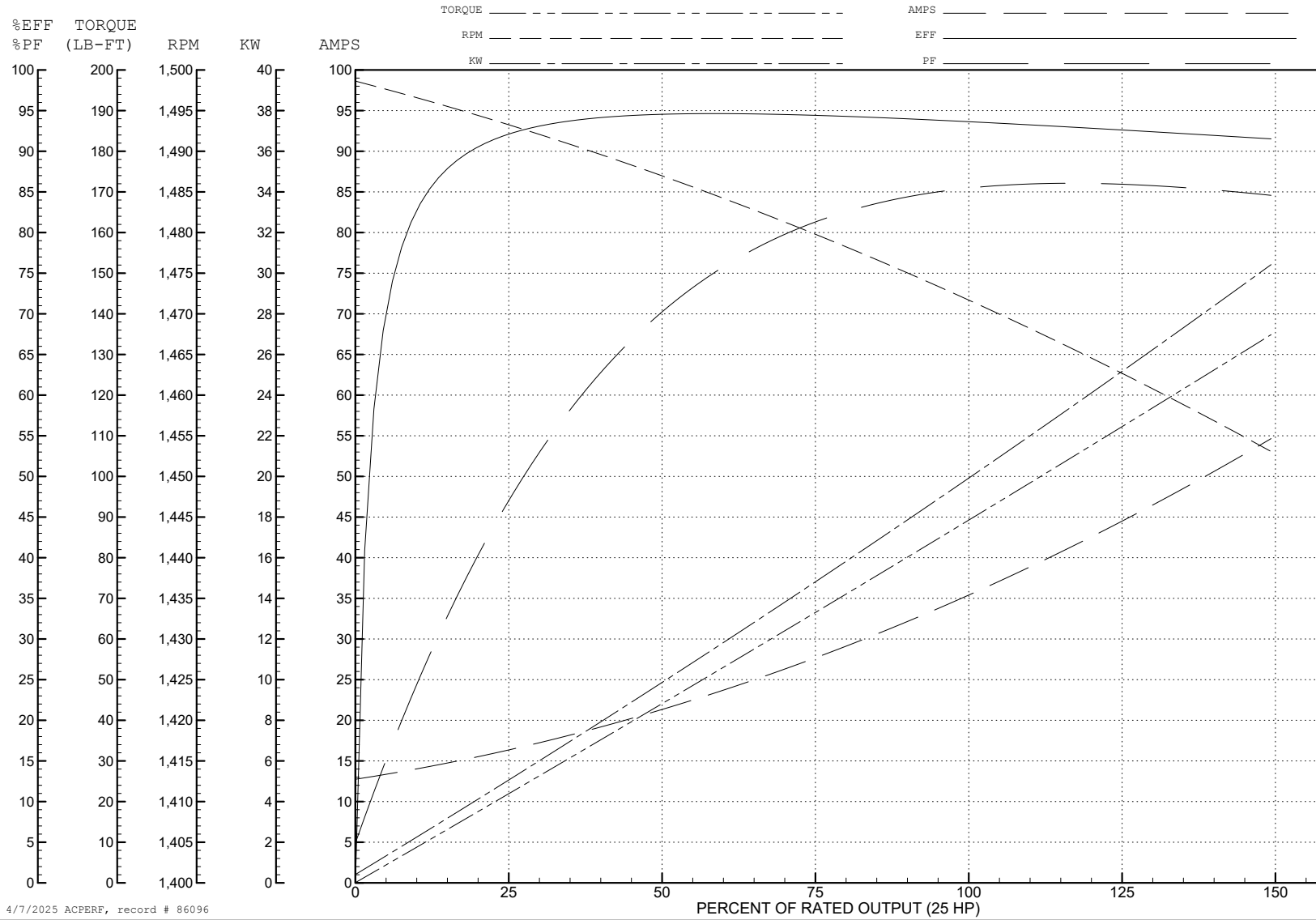
ABB Motors and Mechanical Inc.

WINDING # 10WGZ506

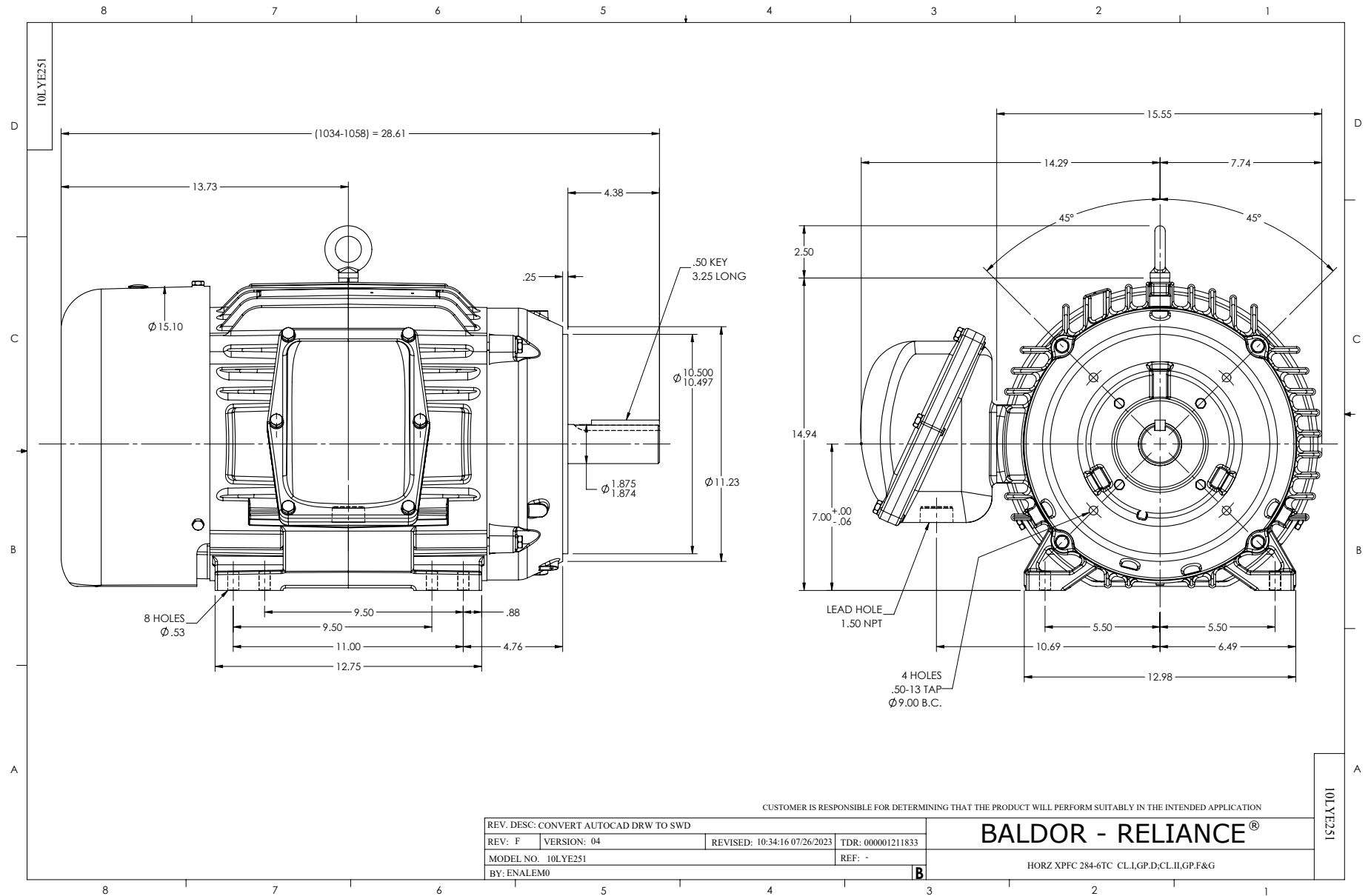
Typical performance - not guaranteed values.

25 HP 3 PH 50 HZ 1470 RPM 380 V 1060M

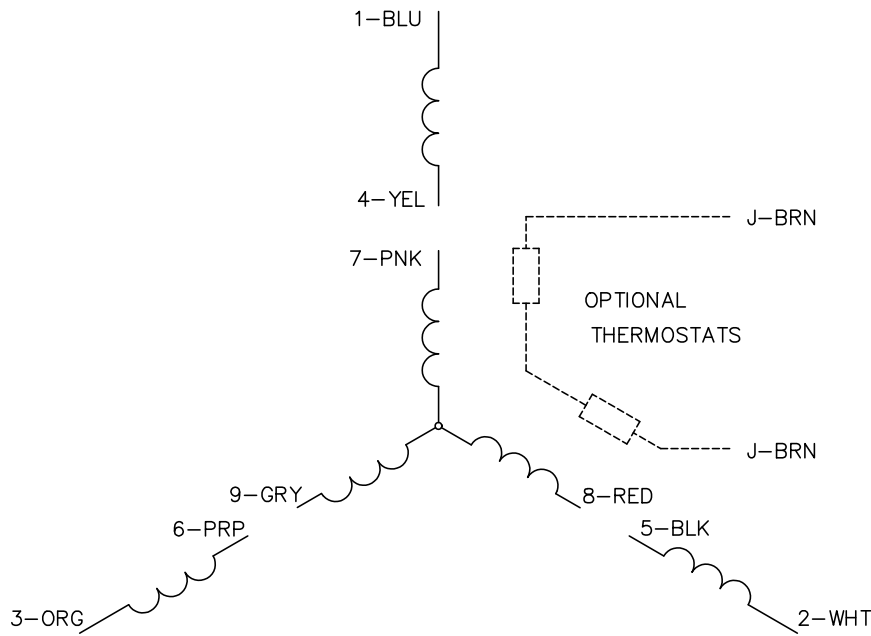
TORQUES (LB-FT): PO=259 PU=120 LR=146 LRA=205



4/7/2025 ACPERF, record # 86096



CD0005



LOW VOLTAGE
(2Y)



LINE

HIGH VOLTAGE
(1Y)



LINE

NOTES:

1. INTERCHANGE ANY TWO LINE LEADS TO REVERSE ROTATION.
2. OPTIONAL THERMOSTATS ARE PROVIDED WHEN SPECIFIED.
3. ACTUAL NUMBER OF INTERNAL PARALLEL CIRCUITS MAY BE A MULTIPLE OF THOSE SHOWN ABOVE.
4. LEAD COLORS ARE OPTIONAL. LEADS MUST ALWAYS BE NUMBERED AS SHOWN.

CD0005

REV. DESC: REVISE TO SHOW OPTIONAL COLORS			
REV. LTR: E	BY: JLP	REVISED: 01/19/99 10:15	TDR: 0171435
S00000		FILE: AAA00005140	MDL: -
		MTL: -	

BALDOR ELECTRIC Co.

3PH, DV, 9 LEADS