

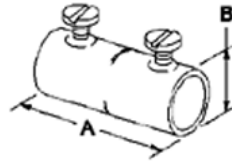
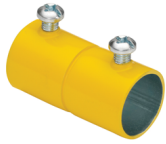


Bridgeport Fittings Inc.
705 Lordship Blvd.
Stratford, CT 06615

Phone: 203-377-5944
Fax: 203-381-3488

Couplings - Steel - Color-Coded (ALL COLORS)

Images



Application

Used to join two lengths of Yellow EMT in special equipment, caution areas, and high voltage wiring.

Product Information

Material: Steel
Finish: Yellow Powder Coat

Certifications & Codes:

UL File Number: E24001
UL Standard: UL514B
UNSPSC: 39121434
Patent Number: 6,861,585

[Download Photo Image](#)

[Download Dimensional Image](#)

Dimension A in Inches: 1-3/16

Dimension B in Inches: 1-1/8

Catalog ID: 241-SY

UPC Number: 78174742410

Description: Yellow Steel EMT Coupling

Application: Used to join two lengths of Yellow EMT in special equipment, caution areas, and high voltage wiring.

Trade Size: 3/4"

Std Pkg Qty: 250

Unit Qty: 25