



---

# Customer information packet

## ECS101T8K1P5DC4

1.5KW, 1500RPM, 3PH, 50HZ, D90C, 3524B, TEFC, B

Class - None

Division - Not Applicable

## Specifications

|                                |                                |
|--------------------------------|--------------------------------|
| Enclosure                      | TEFC                           |
| Frame                          | D90C                           |
| Frame Material                 | Steel                          |
| Frequency                      | 50.00 Hz                       |
| Haz Area Class and Group       | None                           |
| Haz Area Division              | Not Applicable                 |
| Motor Letter Type              | Brushless Wound Field PM Rotor |
| Output @ Frequency             | 1.500 KW @ 50 HZ               |
| Phase                          | 3                              |
| Synchronous Speed @ Frequency  | 1500 RPM @ 50 HZ               |
| Voltage @ Frequency            | 230.0 V @ 50 HZ                |
| Agency Approvals               | CE<br>CULUS<br>UKCA<br>WEEE    |
| Ambient Temperature            | 40 °C                          |
| Auxillary Box                  | No Auxillary Box               |
| Auxillary Box Lead Termination | None                           |
| Base Indicator                 | No Mounting                    |
| Bearing Grease Type            | Polyrex EM (-20F +300F)        |
| Blower                         | None                           |
| Constant Torque Speed Range    | 5                              |
| Current @ Voltage              | 3.400 A @ 230.0 V              |
| Design Code                    | -                              |
| Drip Cover                     | No Drip Cover                  |
| Duty Rating                    | CONT                           |
| Efficiency @ 100% Load         | 90.6 %                         |
| Electrically Isolated Bearing  | Not Electrically Isolated      |
| Feedback Device                | NO FEEDBACK                    |
| Frame Prefix                   | D                              |
| Heater Indicator               | No Heater                      |
| High Voltage Full Load Amps    | 3.4 a                          |

## Part detail

|              |                       |
|--------------|-----------------------|
| Revision     | C                     |
| Type         | AC                    |
| Mech. spec.  | 35EE438               |
| Base         |                       |
| Status       | PRD/A                 |
| Elec. spec.  | 35WGG964              |
| Layout       | 35LYEE438             |
| Eff. date    | 11-22-2024            |
| CD Diagram   | CD0006B03             |
| Poles        | 04                    |
| Leads        | 3#16 13" LONG LEADS Y |
| Proprietary  | False                 |
| Created date | 04-17-2024            |

|                                      |                     |
|--------------------------------------|---------------------|
| <b>Insulation Class</b>              | F                   |
| <b>Inverter Code</b>                 | 03                  |
| <b>KVA Code</b>                      | -                   |
| <b>Lifting Lugs</b>                  | No Lifting Lugs     |
| <b>Locked Bearing Indicator</b>      | Locked Bearing      |
| <b>Motor Lead Quantity/Wire Size</b> | 3 @ 16 AWG          |
| <b>Motor Lead Termination</b>        | Flying Leads        |
| <b>Motor Standards</b>               | IEC                 |
| <b>Motor Type</b>                    | 3524B               |
| <b>Mounting Arrangement</b>          | B14                 |
| <b>Number of Poles</b>               | 4                   |
| <b>Overall Length</b>                | 12.84 IN            |
| <b>Power Factor</b>                  | 93                  |
| <b>Product Family</b>                | General Purpose     |
| <b>Pulley Face Code</b>              | C-Face              |
| <b>Rodent Screen</b>                 | None                |
| <b>Service Factor</b>                | 1.00                |
| <b>Shaft Diameter</b>                | 0.945 IN            |
| <b>Shaft Ground Indicator</b>        | Shaft Grounding     |
| <b>Shaft Rotation</b>                | Reversible          |
| <b>Speed</b>                         | 1500 rpm            |
| <b>Speed Code</b>                    | Single Speed        |
| <b>Starting Method</b>               | Direct on line      |
| <b>Thermal Device - Bearing</b>      | None                |
| <b>Thermal Device - Winding</b>      | None                |
| <b>Vibration Sensor Indicator</b>    | No Vibration Sensor |
| <b>Winding Thermal 1</b>             | None                |
| <b>Winding Thermal 2</b>             | None                |

**Nameplate**

| NP3968B01A01       |                 |                   |            |                  |              |                 |      |  |  |
|--------------------|-----------------|-------------------|------------|------------------|--------------|-----------------|------|--|--|
| <b>CAT.NO.</b>     | ECS101T8K1P5DC4 |                   |            |                  |              |                 |      |  |  |
| <b>SPEC.</b>       | 35EE438G964     |                   |            | <b>YR</b>        |              |                 |      |  |  |
| <b>FRAME</b>       | D90C            | <b>IP</b>         | 55         | <b>WT.</b>       | 45           |                 |      |  |  |
| <b>KW</b>          | 1.5             | <b>HZ</b>         | 50         | <b>PH</b>        | 3            | <b>DUTY-IPM</b> | CONT |  |  |
| <b>INS CL</b>      | F               | <b>CLASS RISE</b> |            |                  | <b>AMB-C</b> | 40              |      |  |  |
| <b>EFF. CL</b>     | IE5             | <b>EFF</b>        | 90.6       | <b>COS0</b>      | 93           |                 |      |  |  |
| <b>VOLTS</b>       | 230             |                   | <b>FLA</b> | 3.4              |              |                 |      |  |  |
| <b>1/MIN</b>       | 1500            |                   |            | <b>1/MIN MAX</b> | 3000         |                 |      |  |  |
| <b>BEMF (V)</b>    | 123             |                   |            | <b>RS (OHMS)</b> | 2.94         |                 |      |  |  |
| <b>LD (MH)</b>     | 22.1            |                   |            | <b>LQ (MH)</b>   | 97.1         |                 |      |  |  |
| <b>VPWM</b>        | <b>CP =</b>     | 50                |            | <b>TO</b>        | 133          |                 |      |  |  |
| <b>CT</b>          | 5               | <b>TO</b>         | 50         | <b>VT</b>        | 5            | <b>TO</b>       | 50   |  |  |
| <b>MATCHED INV</b> | ECIN8A7P0       |                   |            |                  |              |                 |      |  |  |
| <b>DE</b>          | 6206            |                   | <b>ODE</b> | 6203             |              |                 |      |  |  |
| <b>SERIAL #</b>    |                 |                   |            |                  |              |                 |      |  |  |

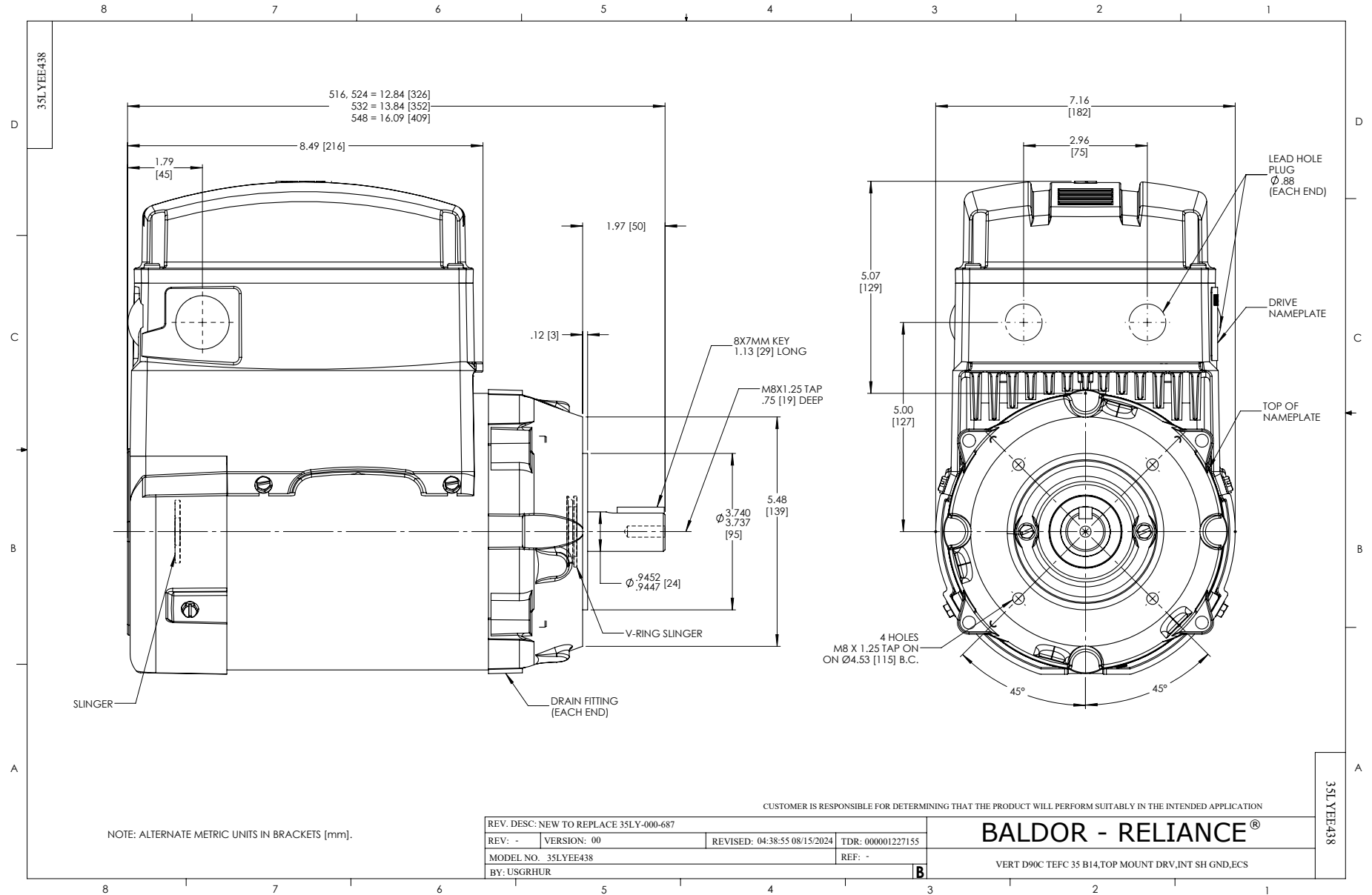
---

**NP3978A00**

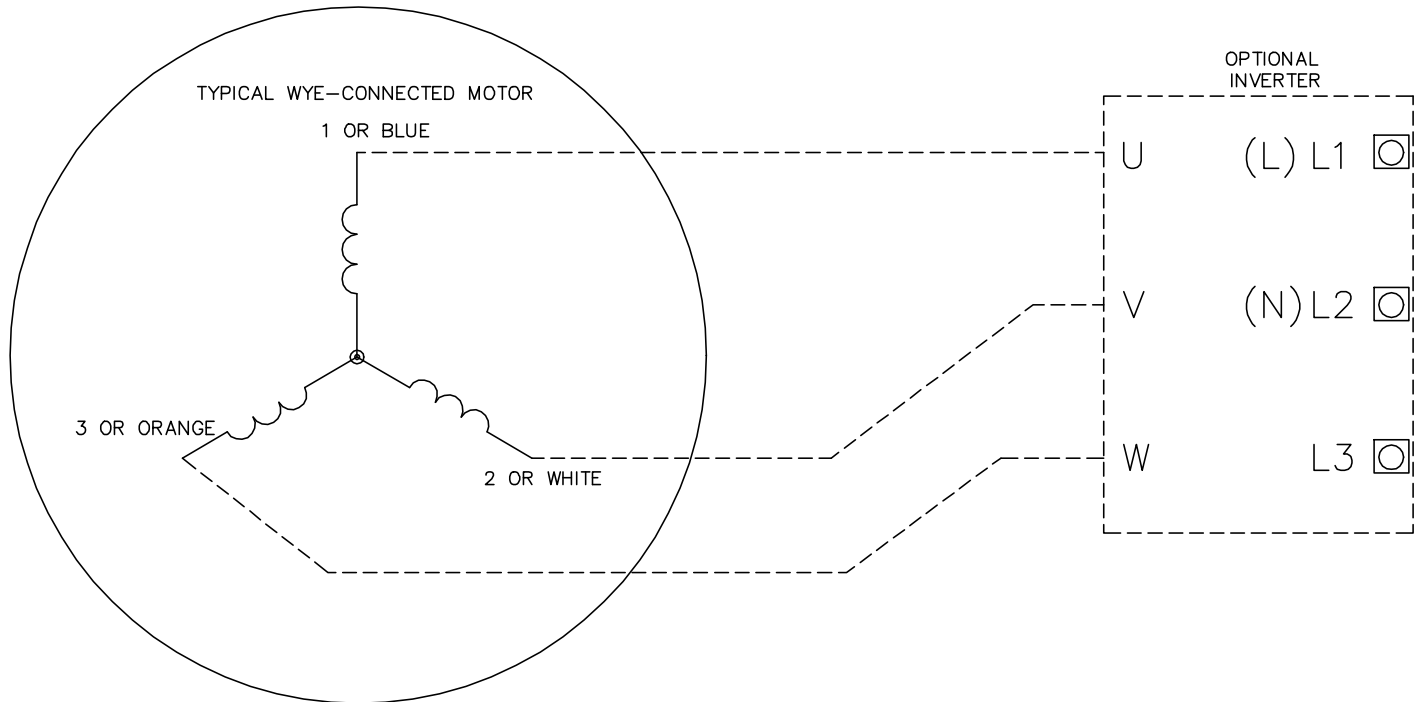
---

|                 |           |                     |   |           |     |
|-----------------|-----------|---------------------|---|-----------|-----|
| <b>PART NO.</b> | ECIN8A7P0 |                     |   |           |     |
| <b>U1</b>       | 240       | <b>PH</b>           | 1 | <b>HZ</b> | 50  |
| <b>I1</b>       | 5.3       | <b>W/EXT. CHOKE</b> |   |           | 5.1 |
| <b>SERIAL #</b> |           |                     |   |           |     |

---



CD0006B03



**NOTES:**

1. INTERCHANGE ANY TWO LINE LEADS TO REVERSE ROTATION.
2. ACTUAL NUMBER OF INTERNAL PARALLEL CIRCUITS MAY VARY.

CD0006B03

|  |                              |                   |
|--|------------------------------|-------------------|
| REV. DESC: CHANGE LEAD COLORS TO BLUE WHITE ORANGE |                              |                   |
| REV. LTR: A  | VERSION: 01                  | TDR: 000001158598 |
| FILE: \AAA\00252\917                               | REVISED: 11:01:03 01/19/2021 | BY: ENMARSO       |
| MTL: -   | © □                          |                   |

**BALDOR - RELIANCE®**

3PH, SV, 3 LEADS, WYE CONNECTED, ECS

SH 1 of 1