



---

# Customer information packet

## EWDM3613T

5HP, 3450RPM, 3PH, 60HZ, 184T, TEFC, F1

Class - None

Division - Not Applicable

## Specifications

|                                |   |
|--------------------------------|---|
| Enclosure                      | TEFC                                    |
| Frame                          | 184T                                    |
| Frame Material                 | Steel                                   |
| Frequency                      | 60.00 Hz                                |
| Haz Area Class and Group       | None                                    |
| Haz Area Division              | Not Applicable                          |
| Motor Letter Type              | Three Phase                             |
| Output @ Frequency             | 5.000 HP @ 60 HZ                        |
| Phase                          | 3                                       |
| Synchronous Speed @ Frequency  | 3600 RPM @ 60 HZ                        |
| Voltage @ Frequency            | 230.0 V @ 60 HZ<br>460.0 V @ 60 HZ      |
| Agency Approvals               | CSA<br>CSA EEV<br>NEMA PREMIUM<br>UR    |
| Ambient Temperature            | 40 °C                                   |
| Auxillary Box                  | No Auxillary Box                        |
| Auxillary Box Lead Termination | None                                    |
| Base Indicator                 | Rigid                                   |
| Bearing Grease Type            | Polyrex EM (-20F +300F)                 |
| Blower                         | None                                    |
| Current @ Voltage              | 11.800 A @ 230.0 V<br>5.900 A @ 460.0 V |
| Design Code                    | A                                       |
| Drip Cover                     | No Drip Cover                           |
| Duty Rating                    | CONT                                    |
| Efficiency @ 100% Load         | 88.5 %                                  |
| Electrically Isolated Bearing  | Not Electrically Isolated               |
| Feedback Device                | NO FEEDBACK                             |
| Heater Indicator               | No Heater                               |
| High Voltage Full Load Amps    | 5.9 a                                   |

## Part detail

|              |            |
|--------------|------------|
| Revision     | B          |
| Type         | AC         |
| Mech. spec.  |            |
| Base         |            |
| Status       | PRD/A      |
| Elec. spec.  | 36WGS042   |
| Layout       | 36LYK186   |
| Eff. date    | 02-14-2024 |
| CD Diagram   | CD0005     |
| Poles        | 02         |
| Leads        | 9#16       |
| Proprietary  | False      |
| Created date | 12-03-2019 |

|                                   |                     |
|-----------------------------------|---------------------|
| <b>Insulation Class</b>           | F                   |
| <b>Inverter Code</b>              | Inverter Ready      |
| <b>KVA Code</b>                   | L                   |
| <b>Lifting Lugs</b>               | No Lifting Lugs     |
| <b>Locked Bearing Indicator</b>   | No Locked Bearing   |
| <b>Motor Lead Termination</b>     | Flying Leads        |
| <b>Motor Standards</b>            | NEMA                |
| <b>Motor Type</b>                 | 3630M               |
| <b>Mounting Arrangement</b>       | F1                  |
| <b>Number of Poles</b>            | 2                   |
| <b>Overall Length</b>             | 16.54 IN            |
| <b>Power Factor</b>               | 91                  |
| <b>Product Family</b>             | Wash Down           |
| <b>Pulley Face Code</b>           | Standard            |
| <b>Rodent Screen</b>              | None                |
| <b>Service Factor</b>             | 1.15                |
| <b>Shaft Diameter</b>             | 1.125 IN            |
| <b>Shaft Ground Indicator</b>     | No Shaft Grounding  |
| <b>Shaft Rotation</b>             | Reversible          |
| <b>Speed</b>                      | 3450 rpm            |
| <b>Speed Code</b>                 | Single Speed        |
| <b>Starting Method</b>            | Direct on line      |
| <b>Thermal Device - Bearing</b>   | None                |
| <b>Thermal Device - Winding</b>   | None                |
| <b>Vibration Sensor Indicator</b> | No Vibration Sensor |
| <b>Winding Thermal 1</b>          | None                |
| <b>Winding Thermal 2</b>          | None                |

**Nameplate**

| <b>NP1669L</b>      |                        |             |            |            |   |              |   |  |  |
|---------------------|------------------------|-------------|------------|------------|---|--------------|---|--|--|
| <b>CAT.NO.</b>      | EWDM3613T              |             |            |            |   |              |   |  |  |
| <b>SPEC.</b>        | 36-0000-0235           |             |            |            |   |              |   |  |  |
| <b>HP</b>           | 5                      |             |            |            |   |              |   |  |  |
| <b>VOLTS</b>        | 230/460                |             |            |            |   |              |   |  |  |
| <b>AMP</b>          | 11.8/5.9               |             |            |            |   |              |   |  |  |
| <b>RPM</b>          | 3450                   |             |            |            |   |              |   |  |  |
| <b>FRAME</b>        | 184T                   |             | <b>HZ</b>  | 60         |   | <b>PH</b>    | 3 |  |  |
| <b>SER.F.</b>       | 1.15                   | <b>CODE</b> | L          | <b>DES</b> | A | <b>CLASS</b> | F |  |  |
| <b>NEMA-NOM-EFF</b> | 88.5                   | <b>PF</b>   | 91         |            |   |              |   |  |  |
| <b>RATING</b>       | 40C AMB-CONT           |             |            |            |   |              |   |  |  |
| <b>CC</b>           | 010A                   |             |            |            |   |              |   |  |  |
| <b>DE</b>           | 6206                   |             | <b>ODE</b> | 6205       |   |              |   |  |  |
| <b>ENCL</b>         | TEFC                   | <b>SN</b>   |            |            |   |              |   |  |  |
| <b>BLANK</b>        | 20:1CT, 20:1VT, 1.00SF |             |            |            |   |              |   |  |  |

**AC Induction Motor Performance Data**

Record # 35706

Typical performance - not guaranteed values

| Winding: 36WGS042-R003 |                   | Type: 3630M               | Enclosure: TEFC                                  |  |
|------------------------|-------------------|---------------------------|--|--|
| <b>Nameplate Data</b>  |                   |                           | <b>460 V, 60 Hz:<br/>High Voltage Connection</b> |  |
| Rated Output (HP)      | 5                 | Full Load Torque          | 7.64 LB-FT                                       |  |
| Volts                  | 208-230/460       | Start Configuration       | direct on line                                   |  |
| Full Load Amps         | 12-11.8/5.9       | Breakdown Torque          | 33.7 LB-FT                                       |  |
| R.P.M.                 | 3450              | Pull-up Torque            | 23.5 LB-FT                                       |  |
| Hz                     | 60 Phase          | Locked-rotor Torque       | 27.5 LB-FT                                       |  |
| NEMA Design Code       | A KVA Code        | Starting Current          | 57.2 A   |  |
| Service Factor (S.F.)  | 1.15              | No-load Current           | 1.68 A   |  |
| NEMA Nom. Eff.         | 88.5 Power Factor | Line-line Res. @ 25°C     | 2.27 Ω   |  |
| Rating - Duty          | 40C AMB-CONT      | Temp. Rise @ Rated Load   | 72°C   |  |
| S.F. Amps              |                   | Temp. Rise @ S.F. Load    | 88°C   |  |
|                        |                   | Locked-rotor Power Factor | 45   |  |
|                        |                   | Rotor inertia             | 0.134 LB-FT <sup>2</sup>                         |  |

**Load Characteristics 460 V, 60 Hz, 5 HP**

| % of Rated Load | 25   | 50   | 75   | 100  | 125  | 150  | S.F. |
|-----------------|------|------|------|------|------|------|------|
| Power Factor    | 62   | 81   | 88   | 91   | 93   | 94   | 92   |
| Efficiency      | 83.2 | 88.4 | 89.1 | 88.3 | 87   | 85.8 | 87.5 |
| Speed           | 3569 | 3537 | 3504 | 3466 | 3428 | 3385 | 3443 |
| Line amperes    | 2.24 | 3.26 | 4.47 | 5.85 | 7.26 | 8.8  | 6.7  |

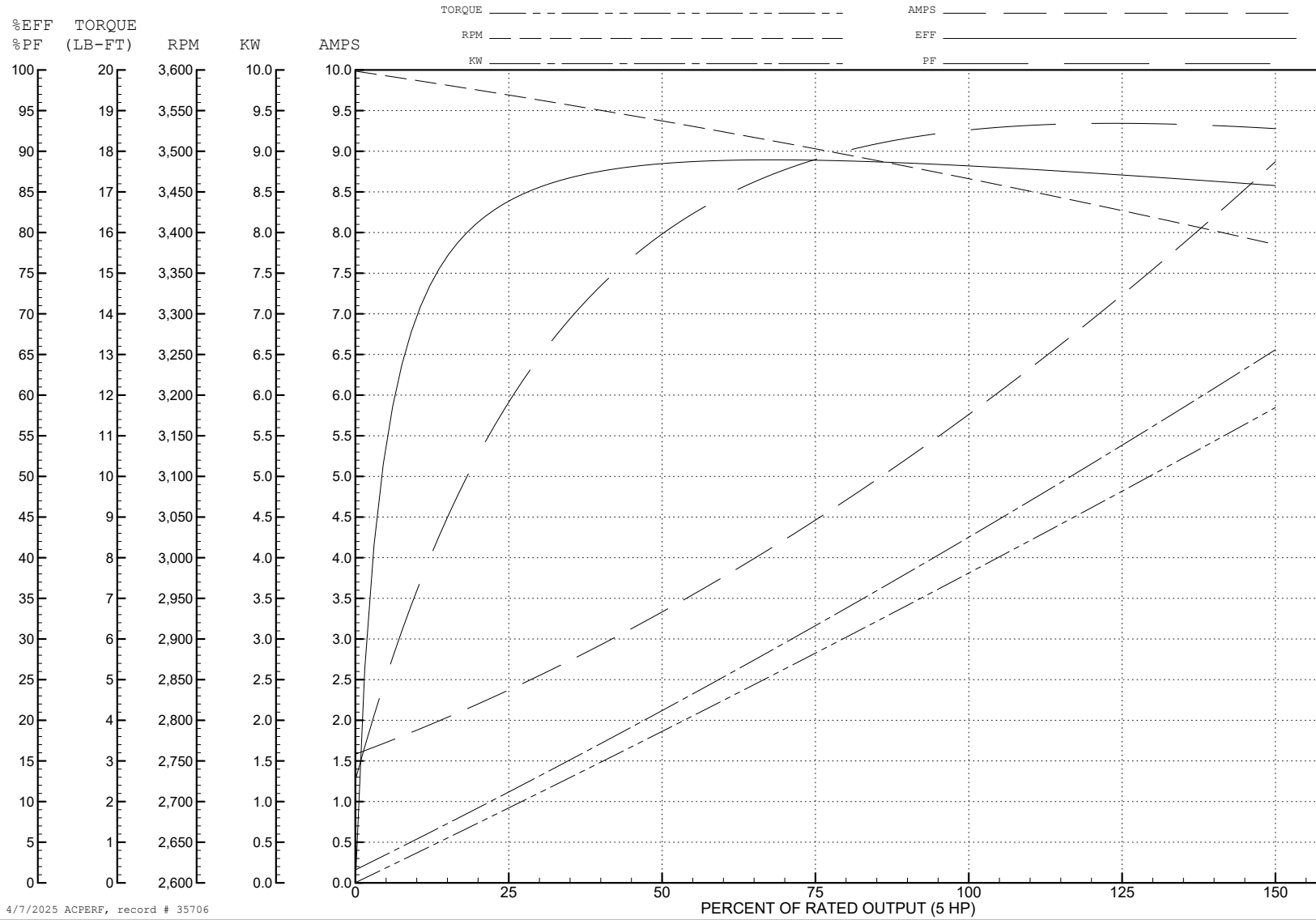
ABB Motors and Mechanical Inc.

WINDING # 36WGS042

Typical performance - not guaranteed values.

5 HP 3 PH 60 HZ 3450 RPM 460 V 3630M

TORQUES (LB-FT): PO=33.7 PU=23.5 LR=27.5 LRA=57.2



4/7/2025 ACPERF, record # 35706

**AC Induction Motor Performance Data**

Record # 35722

Typical performance - not guaranteed values

| <b>Winding: 36WGS042-R003</b> |                          | <b>Type: 3630M</b>         |  | <b>Enclosure: TEFC</b>   |  |
|-------------------------------|--------------------------|----------------------------|--|--------------------------|--|
| <b>Nameplate Data</b>         |                          |                            | <b>460 V, 60 Hz:<br/>High Voltage Connection</b> |                          |  |
| <b>Rated Output (HP)</b>      | 5                        | <b>Full Load Torque</b>    | 7.64 LB-FT                                       |                          |  |
| <b>Volts</b>                  | 230/460                  | <b>Start Configuration</b> | direct on line                                   |                          |  |
| <b>Full Load Amps</b>         | 11.8/5.9                 | <b>Breakdown Torque</b>    | 33.7 LB-FT                                       |                          |  |
| <b>R.P.M.</b>                 | 3450                     | <b>Pull-up Torque</b>      | 23.5 LB-FT                                       |                          |  |
| <b>Hz</b>                     | 60 <b>Phase</b>          | 3                          | <b>Locked-rotor Torque</b>                       | 27.5 LB-FT               |  |
| <b>NEMA Design Code</b>       | A <b>KVA Code</b>        | L                          | <b>Starting Current</b>                          | 57.2 A                   |  |
| <b>Service Factor (S.F.)</b>  | 1.15                     | <b>No-load Current</b>     | 1.68 A   |                          |  |
| <b>NEMA Nom. Eff.</b>         | 88.5 <b>Power Factor</b> | 91                         | <b>Line-line Res. @ 25°C</b>                     | 2.27 Ω                   |  |
| <b>Rating - Duty</b>          | 40C AMB-CONT             |                            | <b>Temp. Rise @ Rated Load</b>                   | 72°C                     |  |
| <b>S.F. Amps</b>              |                          |                            | <b>Temp. Rise @ S.F. Load</b>                    | 88°C                     |  |
|                               |                          |                            | <b>Locked-rotor Power Factor</b>                 | 45                       |  |
|                               |                          |                            | <b>Rotor inertia</b>                             | 0.134 LB-FT <sup>2</sup> |  |

**Load Characteristics 460 V, 60 Hz, 5 HP**

| <b>% of Rated Load</b> | <b>25</b> | <b>50</b> | <b>75</b> | <b>100</b> | <b>125</b> | <b>150</b> | <b>S.F.</b> |
|------------------------|-----------|-----------|-----------|------------|------------|------------|-------------|
| <b>Power Factor</b>    | 62        | 81        | 88        | 91         | 93         | 94         | 92          |
| <b>Efficiency</b>      | 83.2      | 88.4      | 89.1      | 88.3       | 87         | 85.8       | 87.5        |
| <b>Speed</b>           | 3569      | 3537      | 3504      | 3466       | 3428       | 3385       | 3443        |
| <b>Line amperes</b>    | 2.24      | 3.26      | 4.47      | 5.85       | 7.26       | 8.8        | 6.7         |

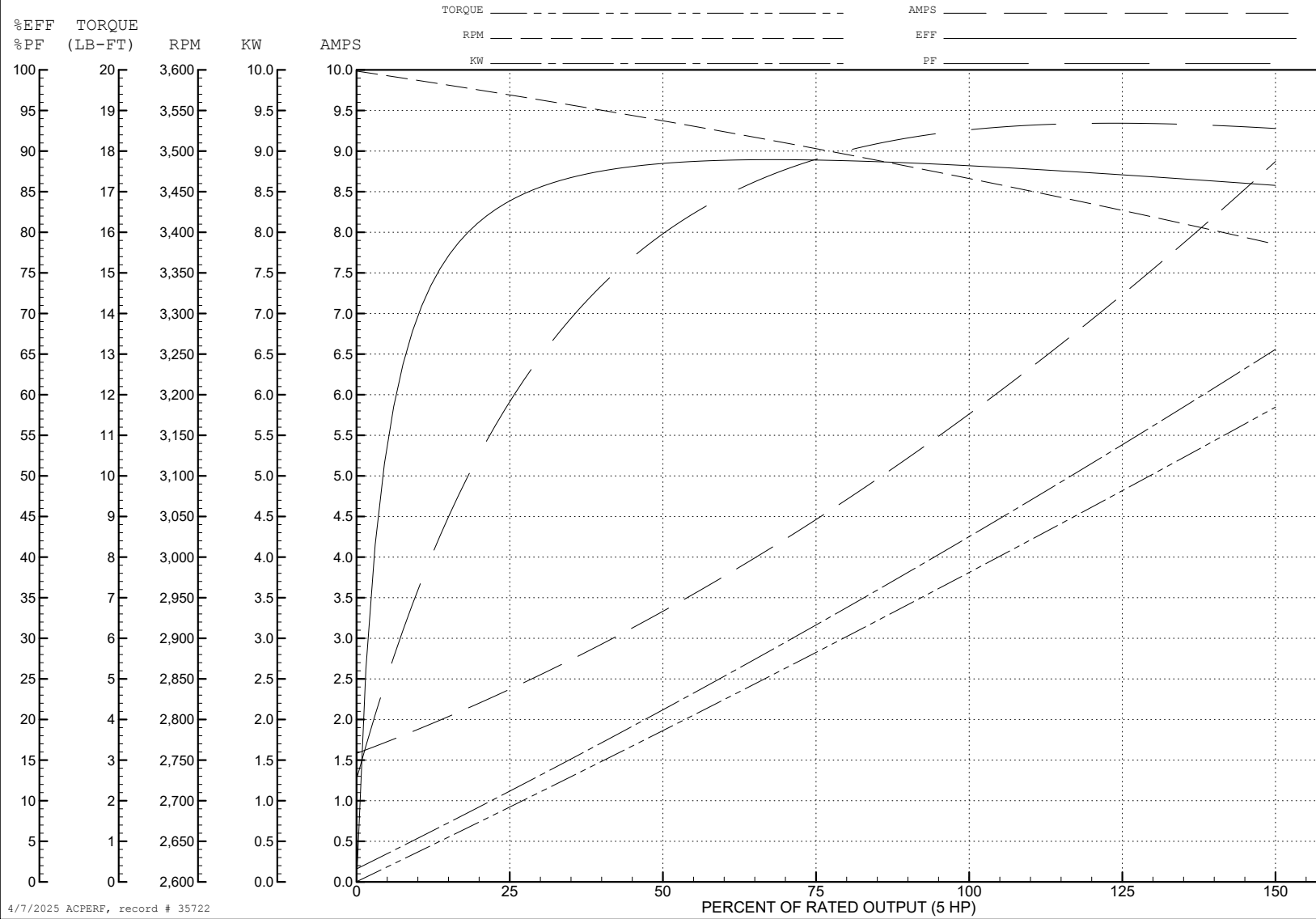
ABB Motors and Mechanical Inc.

WINDING # 36WGS042

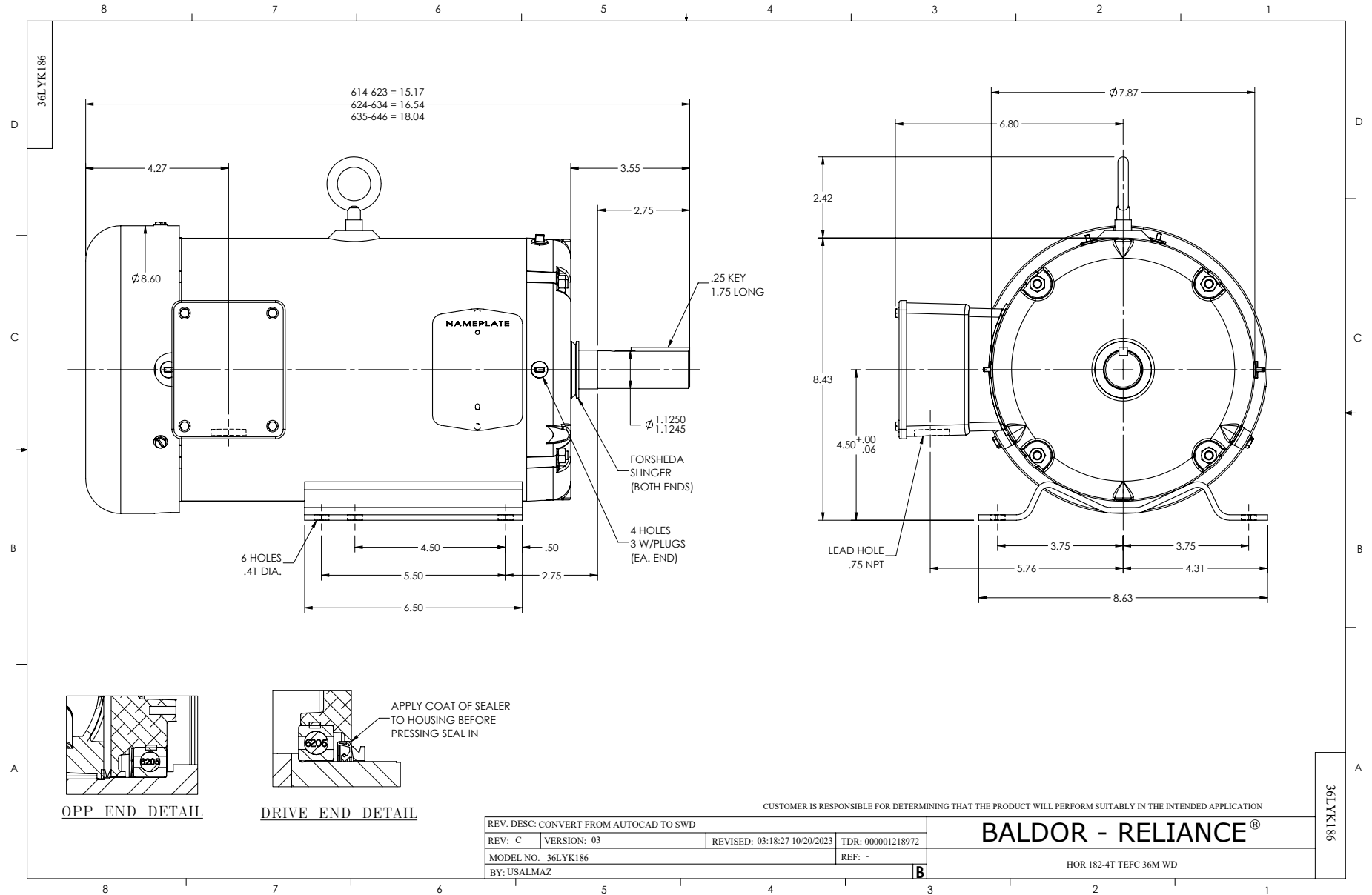
Typical performance - not guaranteed values.

5 HP 3 PH 60 HZ 3450 RPM 460 V 3630M

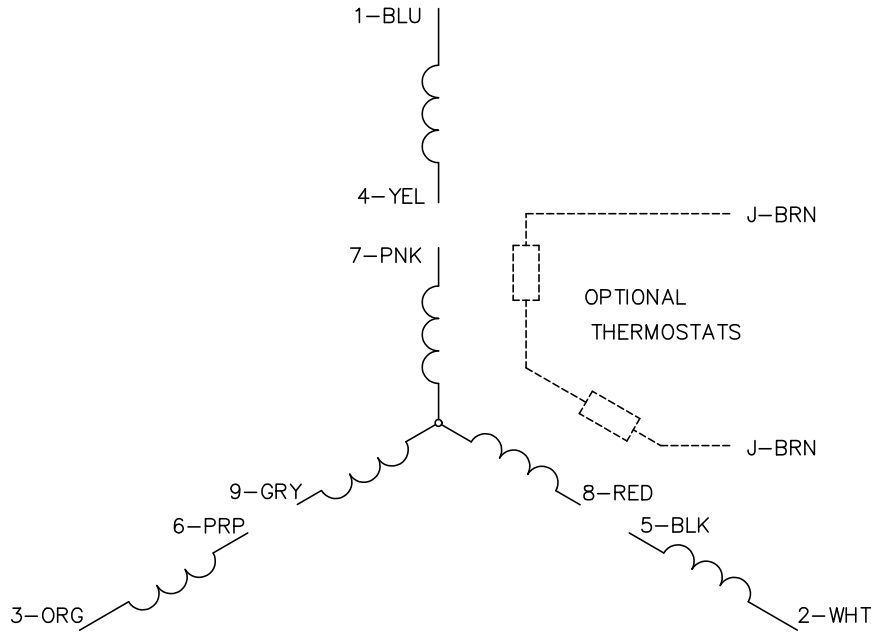
TORQUES (LB-FT): PO=33.7 PU=23.5 LR=27.5 LRA=57.2



4/7/2025 ACPERF, record # 35722



CD0005

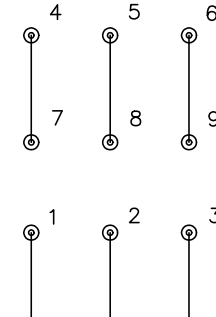


LOW VOLTAGE  
(2Y)



LINE

HIGH VOLTAGE  
(1Y)



LINE

NOTES:

1. INTERCHANGE ANY TWO LINE LEADS TO REVERSE ROTATION.
2. OPTIONAL THERMOSTATS ARE PROVIDED WHEN SPECIFIED.
3. ACTUAL NUMBER OF INTERNAL PARALLEL CIRCUITS MAY BE A MULTIPLE OF THOSE SHOWN ABOVE.
4. LEAD COLORS ARE OPTIONAL. LEADS MUST ALWAYS BE NUMBERED AS SHOWN.

CD0005

|   |         |                         |              |
|---|---------|-------------------------|--------------|
| REV. DESC: REVISE TO SHOW OPTIONAL COLORS |         |                         |              |
| REV. LTR: E                               | BY: JLP | REVISED: 01/19/99 10:15 | TDR: 0171435 |
| S00000                                    |         | FILE: AAA00005140       | MDL: -       |
|   |         | MTL: -                  |              |

**BALDOR ELECTRIC Co.**

3PH, DV, 9 LEADS