



Customer information packet

FSWDM3651TP-E

3HP, 1655RPM, 3PH, 60HZ, 145T, 3540M, TEFC, F1

Class - None

Division - Not Applicable

Specifications

Enclosure	TEFC
Frame	145T
Frame Material	Stainless Steel
Frequency	60.00 Hz
Haz Area Class and Group	None
Haz Area Division	Not Applicable
Motor Letter Type	Three Phase
Output @ Frequency	3.000 HP @ 60 HZ
Phase	3
Synchronous Speed @ Frequency	1800 RPM @ 60 HZ
Voltage @ Frequency	460.0 V @ 60 HZ 230.0 V @ 60 HZ
Agency Approvals	CURUSEEV NEMA PREMIUM WEEE
Ambient Temperature	40 °C
Auxillary Box	No Auxillary Box
Auxillary Box Lead Termination	None
Base Indicator	Rigid
Bearing Grease Type	Polyrex EM (-20F +300F)
Blower	None
Current @ Voltage	8.600 A @ 230.0 V 8.800 A @ 208.0 V 4.300 A @ 460.0 V
Design Code	D
Drip Cover	No Drip Cover
Duty Rating	CONT
Efficiency @ 100% Load	81.5 %
Electrically Isolated Bearing	Not Electrically Isolated
Feedback Device	NO FEEDBACK
Front Shaft Indicator	None
Heater Indicator	No Heater

Part detail

Revision	C
Type	AC
Mech. spec.	35E6057
Base	
Status	PRD/A
Elec. spec.	35WGG301
Layout	35LYE6057
Eff. date	03-28-2025
CD Diagram	CD0005
Poles	04
Leads	9#18
Proprietary	False
Created date	06-29-2023

High Voltage Full Load Amps	4.3 a
Insulation Class	H
Inverter Code	Not Inverter
KVA Code	H
Lifting Lugs	No Lifting Lugs
Locked Bearing Indicator	Locked Bearing
Motor Finish	UNPAINTED
Motor Lead Quantity/Wire Size	9 @ 18 AWG
Motor Lead Termination	Cord
Motor Standards	NEMA
Motor Type	3540M
Mounting Arrangement	F1
Number of Poles	4
Overall Length	16.28 IN
Power Factor	80
Product Family	WD All SD Non-Encapsulated
Pulley End Bearing Type	Sealed Bearing
Pulley Face Code	Standard
Pulley Shaft Indicator	Standard
Rodent Screen	None
RoHS Status	Y
Service Factor	1.00
Shaft Diameter	0.875 IN
Shaft Ground Indicator	No Shaft Grounding
Shaft Rotation	Reversible
Shaft Slinger Indicator	No Slinger
Speed	1655 rpm
Speed Code	Single Speed
Starting Method	Direct on line
Thermal Device - Bearing	None
Thermal Device - Winding	None
Vibration Sensor Indicator	No Vibration Sensor
Winding Thermal 1	None
Winding Thermal 2	None

AC Induction Motor Performance Data

Record # 86945

Preliminary Data Sheet

Winding: 35WGG301-R001		Type: 3540M	Enclosure: TEFC	
Nameplate Data			460 V, 60 Hz: High Voltage Connection	
Rated Output (HP)	3	Full Load Torque	9.54 LB-FT	
Volts	230/460	Start Configuration	direct on line	
Full Load Amps	8.6/4.3	Breakdown Torque	34.9 LB-FT	
R.P.M.	1655	Pull-up Torque	34.8 LB-FT	
Hz	60 Phase	Locked-rotor Torque	39.2 LB-FT	
NEMA Design Code	D KVA Code	Starting Current	26 A	
Service Factor (S.F.)	1	No-load Current	2.25 A	
NEMA Nom. Eff.	81.5 Power Factor	Line-line Res. @ 25°C	5.66 Ω	
Rating - Duty	40C AMB-CONT	Temp. Rise @ Rated Load	105°C	
		Locked-rotor Power Factor	70.6	
		Rotor inertia	0.289 lb-ft ²	

Load Characteristics 460 V, 60 Hz, 3 HP

% of Rated Load	25	50	75	100	125	150
Power Factor	37	59	72	79	84	86
Efficiency	80.2	85.1	85	82.7	79.5	75.5
Speed	1768	1736	1701	1658	1610	1553
Line amperes	2.39	2.83	3.46	4.29	5.27	6.47

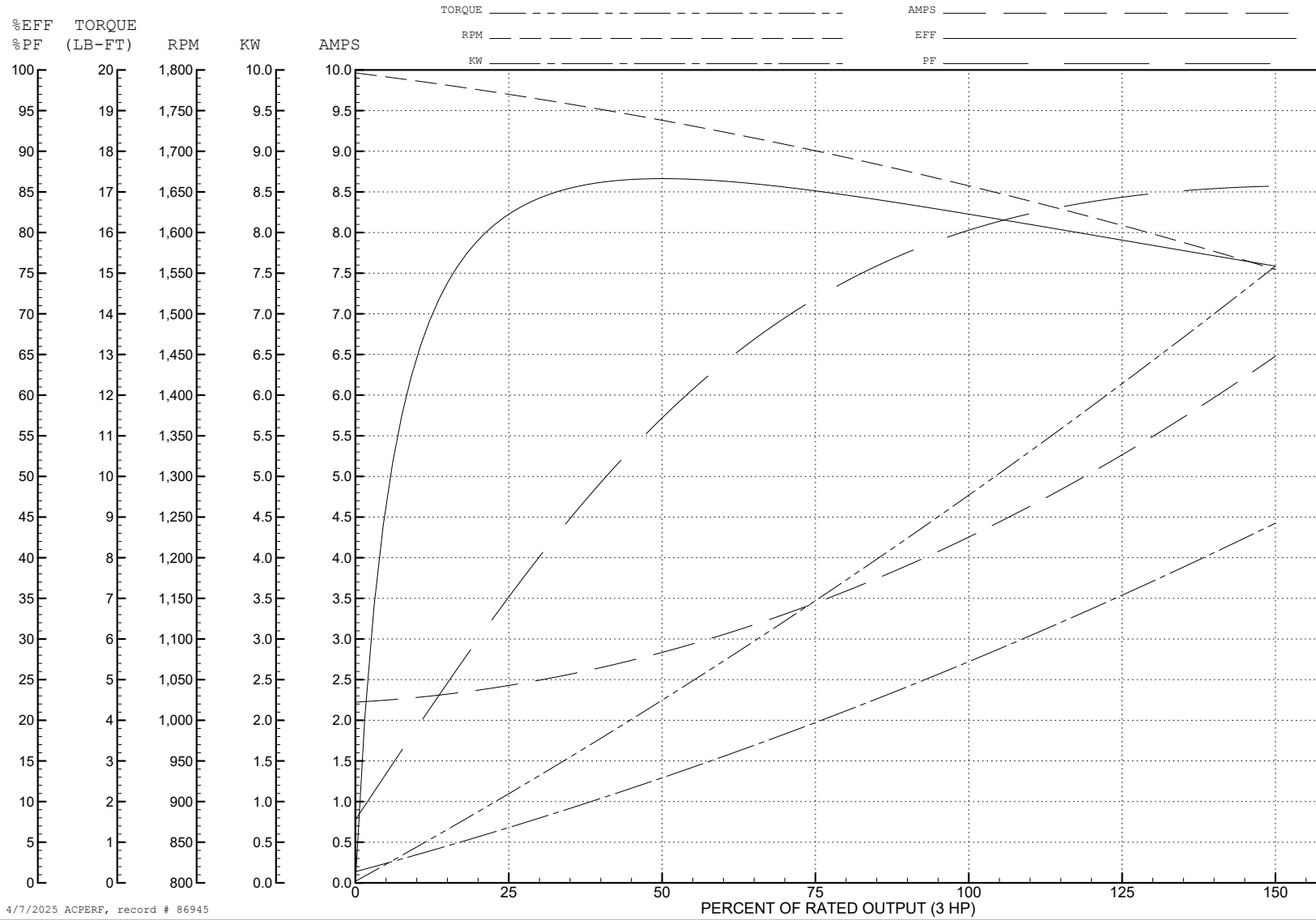
ABB Motors and Mechanical Inc.

WINDING # 35WGG301

3 HP 3 PH 60 HZ 1655 RPM 460 V 3540M

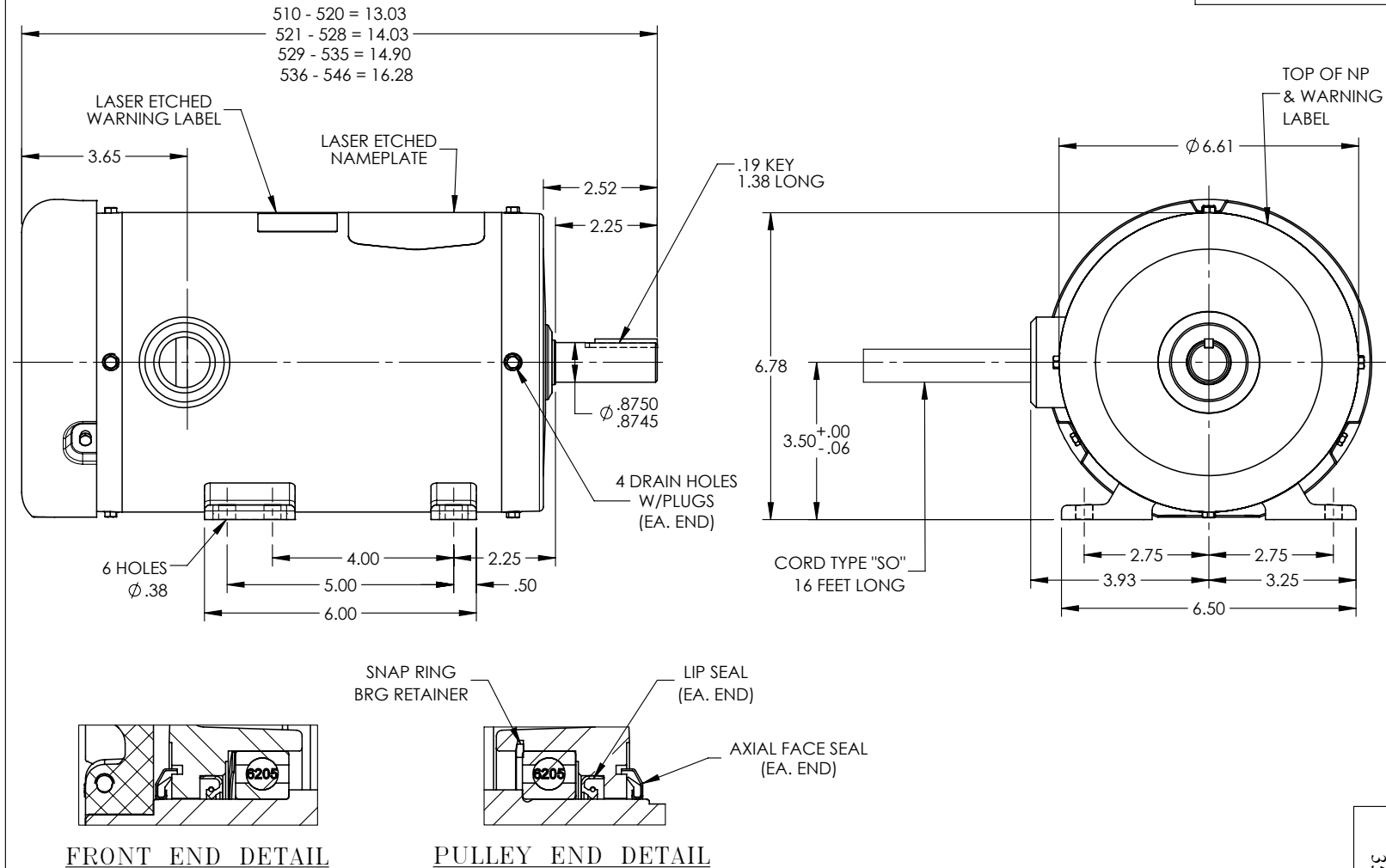
Typical performance - not guaranteed values.

TORQUES (LB-FT): PO=34.9 PU=34.8 LR=39.2 LRA=26



4/7/2025 ACPERF, record # 86945

35LYE6057



CUSTOMER IS RESPONSIBLE FOR DETERMINING THAT BALDOR'S PRODUCT WILL PERFORM SUITABLY IN THE INTENDED APPLICATION

REV. DESC: NEW TO REPLACE 35LY-000-101			
REV: -	VERSION: 00	REVISED: 04:34:24 06/28/2023	TDR: 000001206898
35LYE6057	MODEL NO. 35LYE6057	REF: -	
	BY: ENFRAJ0		

BALDOR

HOR 143-5T TEFC 35M WD11/12, CORD, WELDED ADAPTER

35LYE6057

CD0005



LOW VOLTAGE (2Y)



LINE

HIGH VOLTAGE (1Y)



LINE

NOTES:

1. INTERCHANGE ANY TWO LINE LEADS TO REVERSE ROTATION.
2. OPTIONAL THERMOSTATS ARE PROVIDED WHEN SPECIFIED.
3. ACTUAL NUMBER OF INTERNAL PARALLEL CIRCUITS MAY BE A MULTIPLE OF THOSE SHOWN ABOVE.
4. LEAD COLORS ARE OPTIONAL. LEADS MUST ALWAYS BE NUMBERED AS SHOWN.

CD0005

REV. DESC: REVISE TO SHOW OPTIONAL COLORS			
REV. LTR: E	BY: JLP	REVISED: 01/19/99 10:15	TDR: 0171435
S00000		FILE: AAA00005140	MDL: -
		MTL: -	

BALDOR ELECTRIC Co.

3PH, DV, 9 LEADS